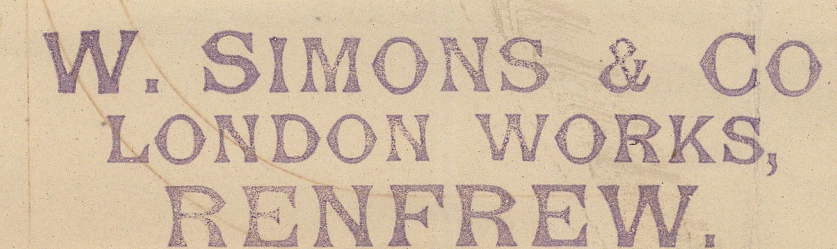


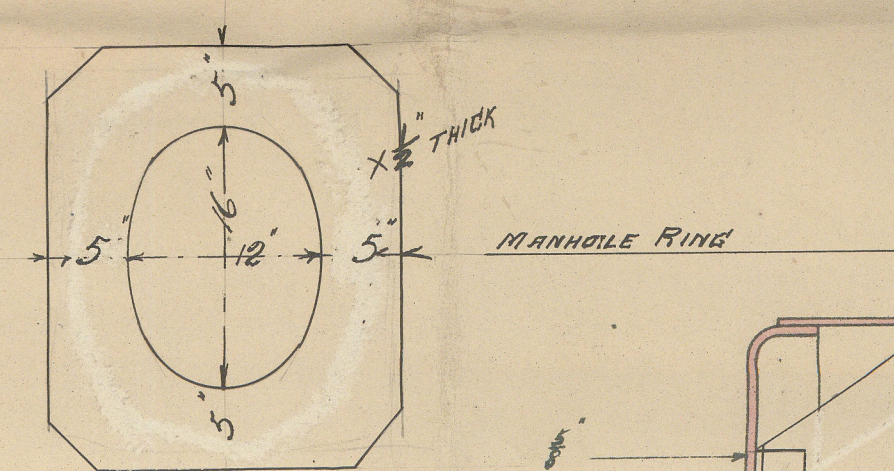
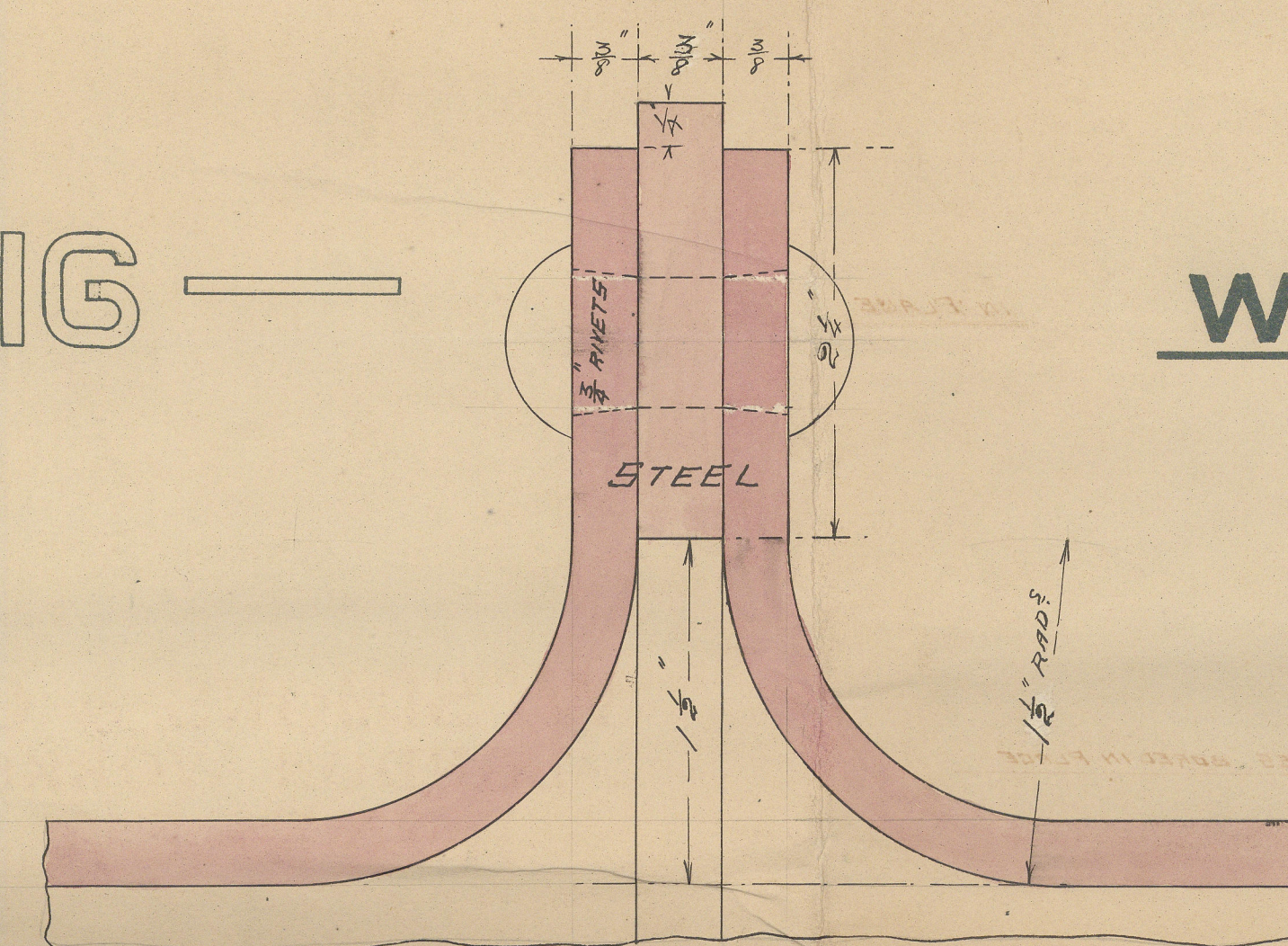
Ch. 19: 4: 9<sup>3</sup>



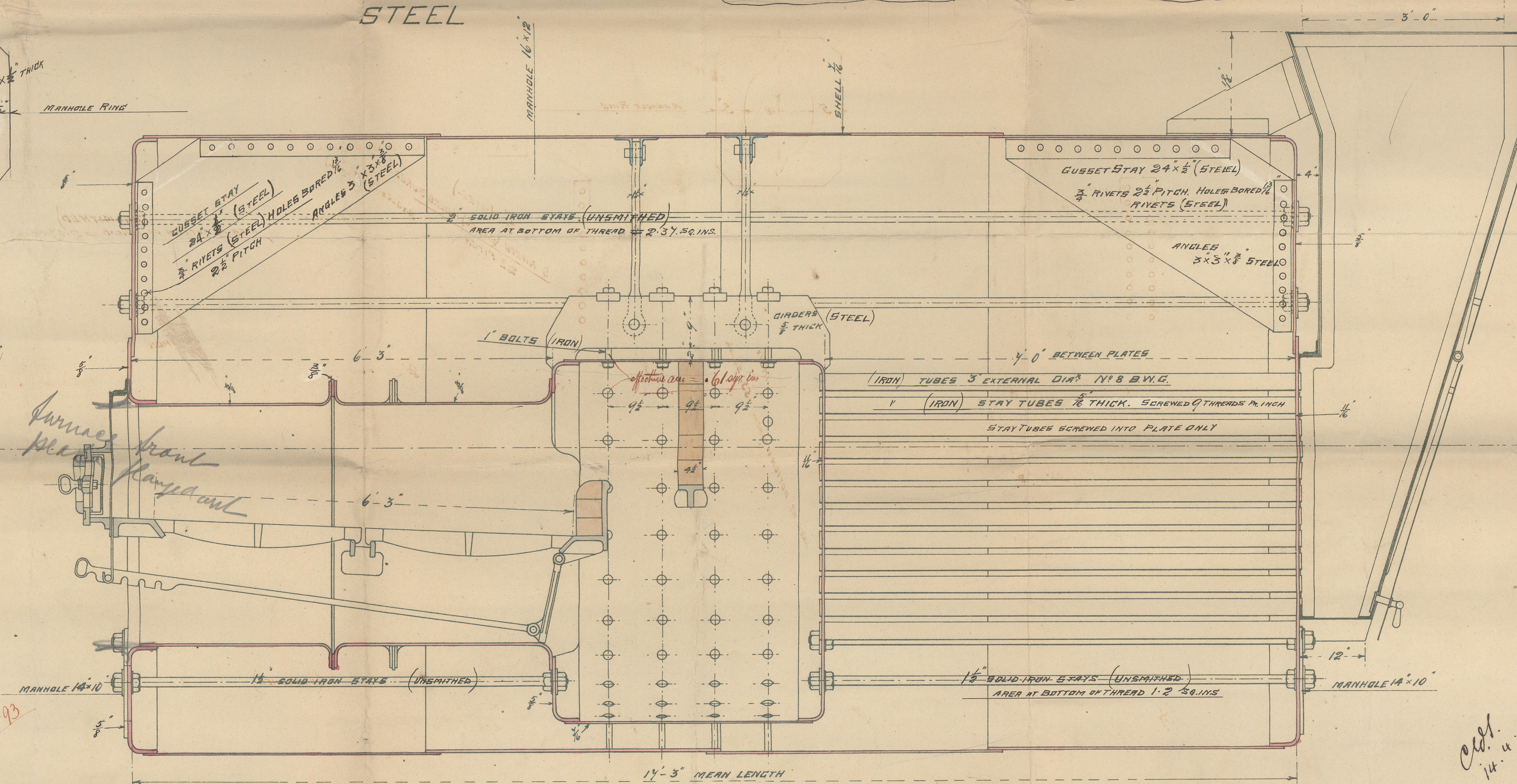
# WOOLWICH FERRY.

HEATING SURFACE	1256.24	SQUARE FT.	ONE	BOILER
"	2512.48	"	"	TWO
GRATE	43.45	"	"	ONE
"	84.5	"	"	TWO

STEEL



STATS Q8 PIRK 1 DIA. 4  
BURNED & FINE-TITTED IRON  
AREA AT BOTTOM OF THREAD .55 SQ. IN.



W.A. 17.4-93

Oct. 14. 1881



No. 313



W Simons & Co  
Woolwich Ferry;  
P.S. "Hutton"  
Glasgow Report  
No 12566.—

Boiler

Lloyds



© 2021

Lloyd's Register  
Foundation

GLS237-0012