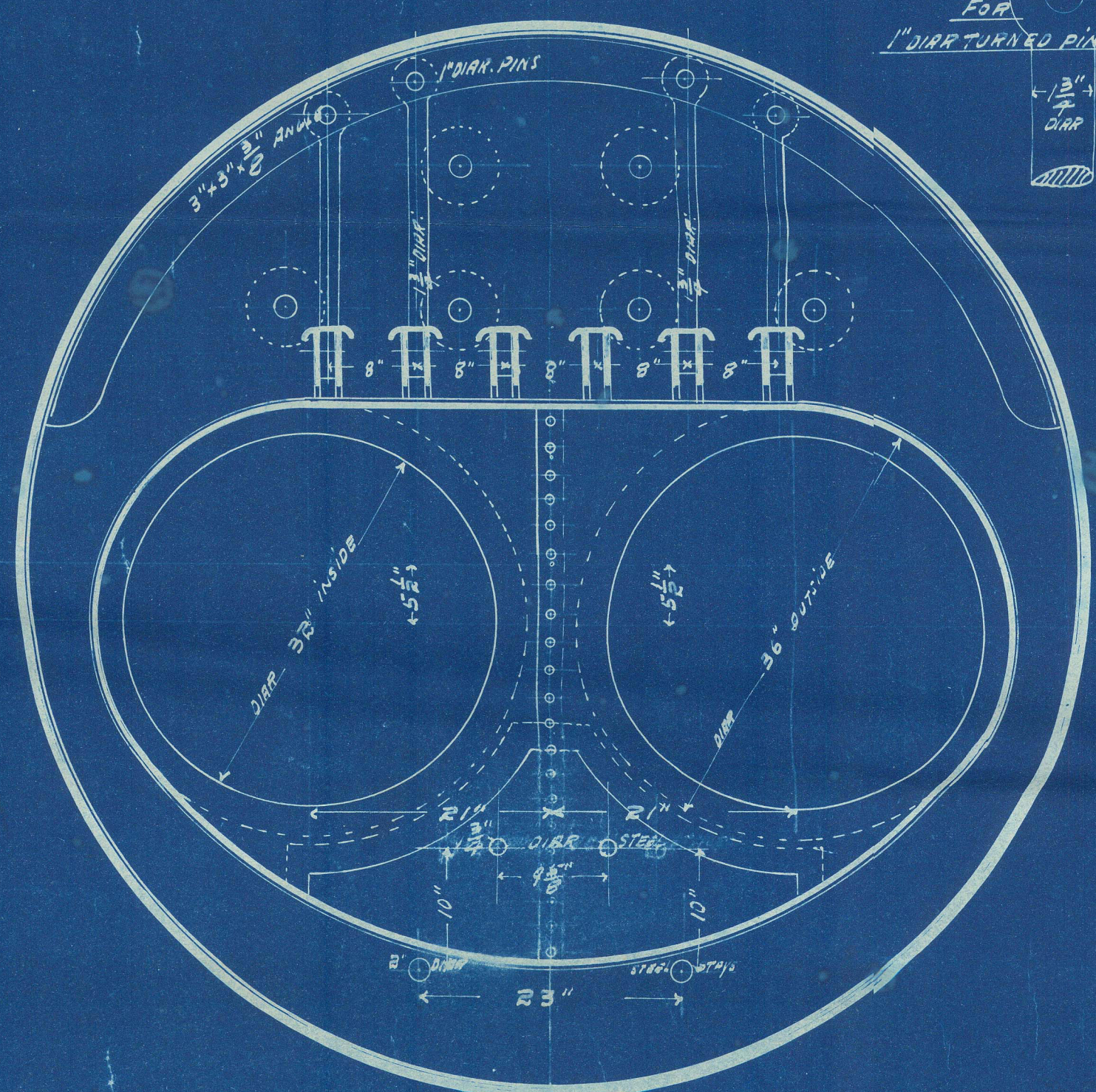
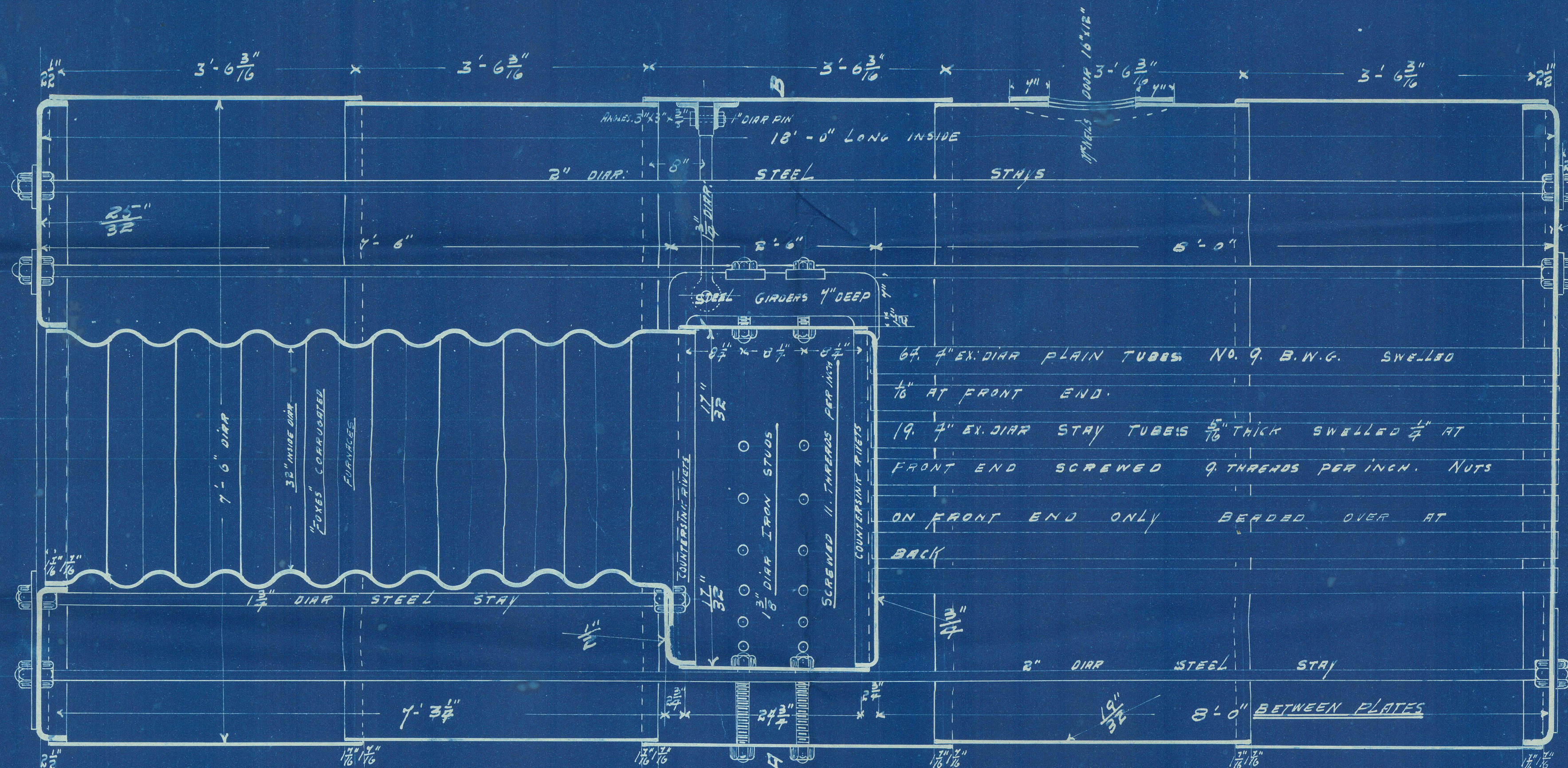


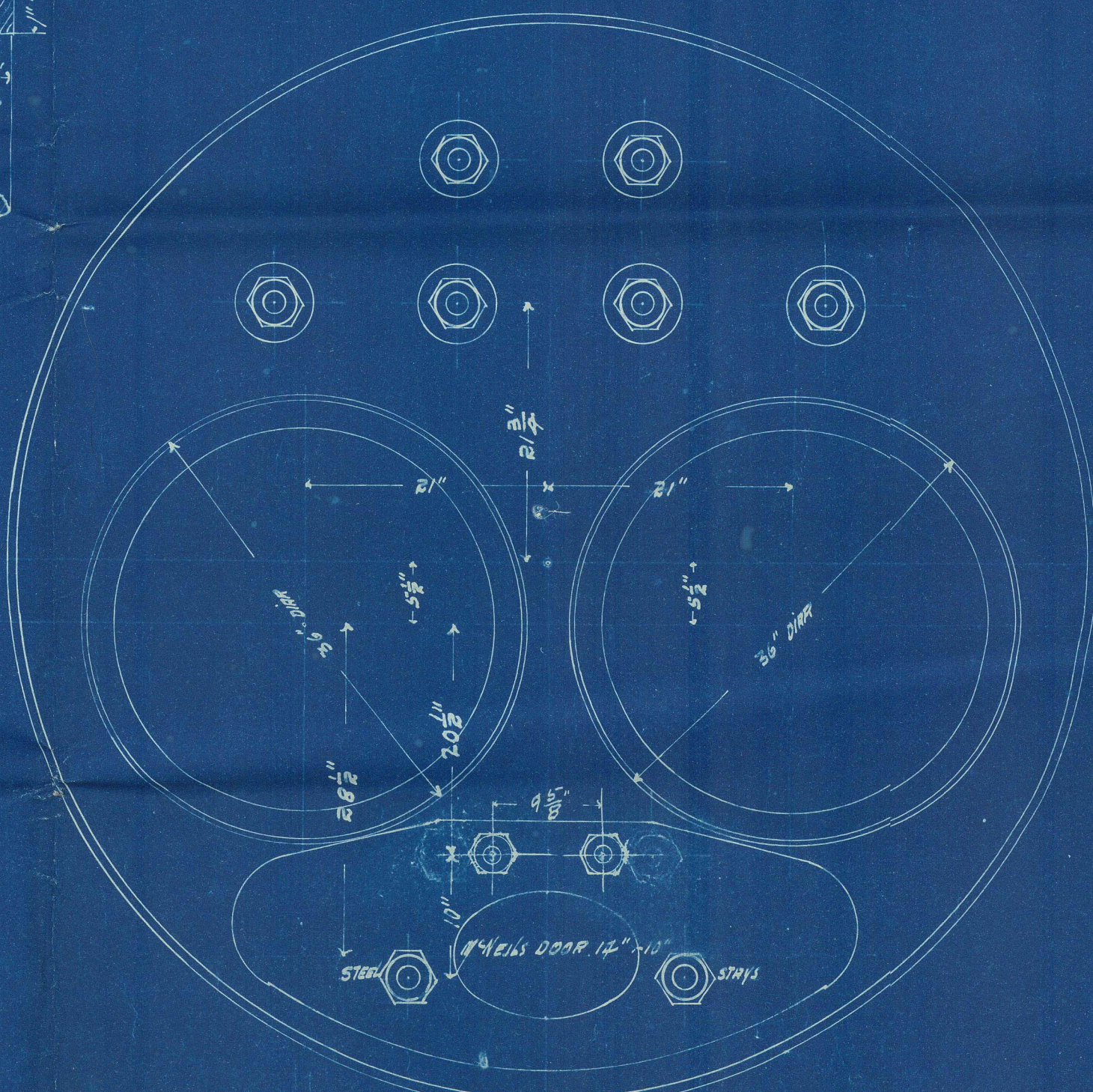
CROSS SECTION ON A.B.
LOOKING ON FRONT



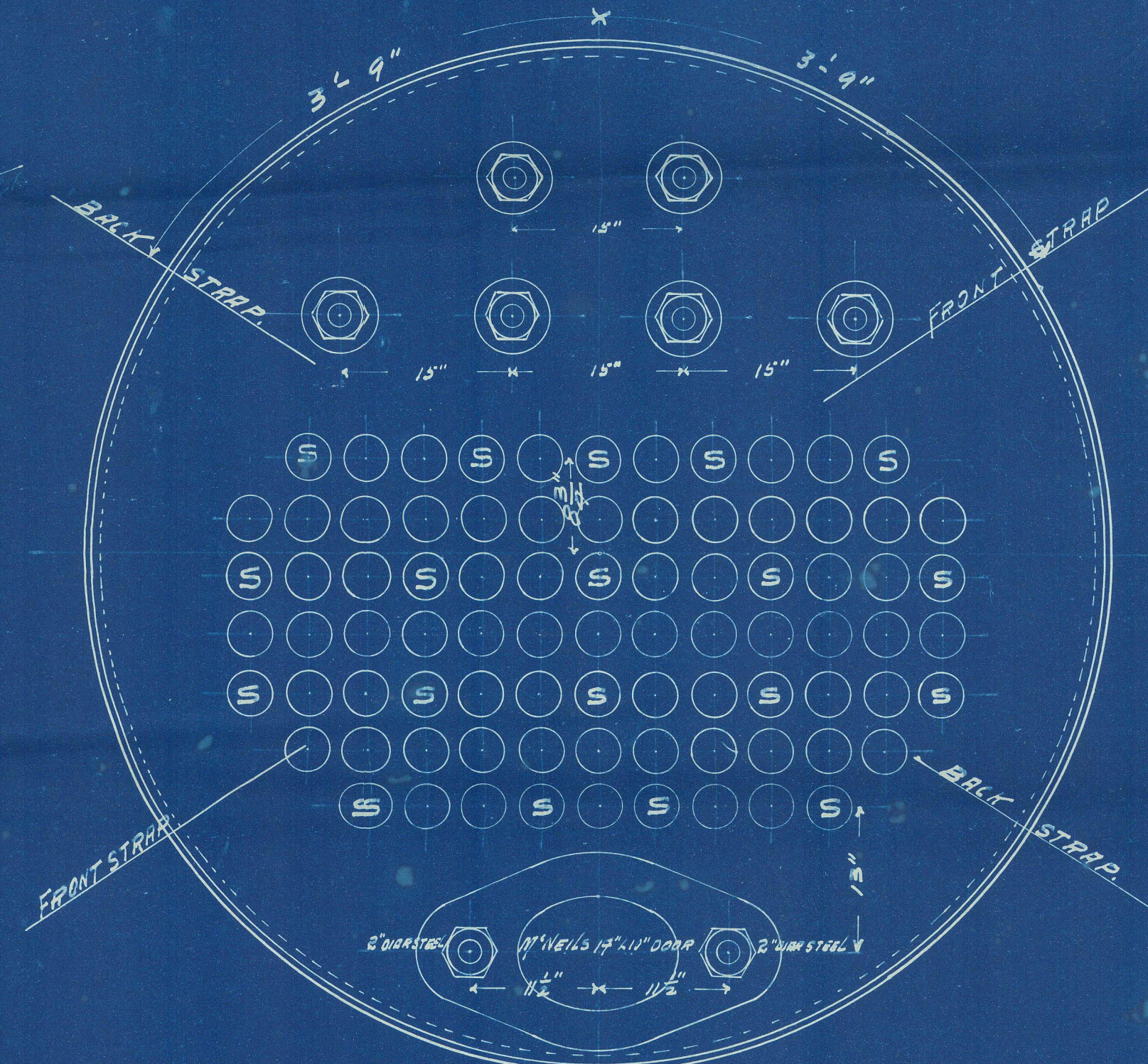
CROSS SECTION ON A.B.
LOOKING ON BACK



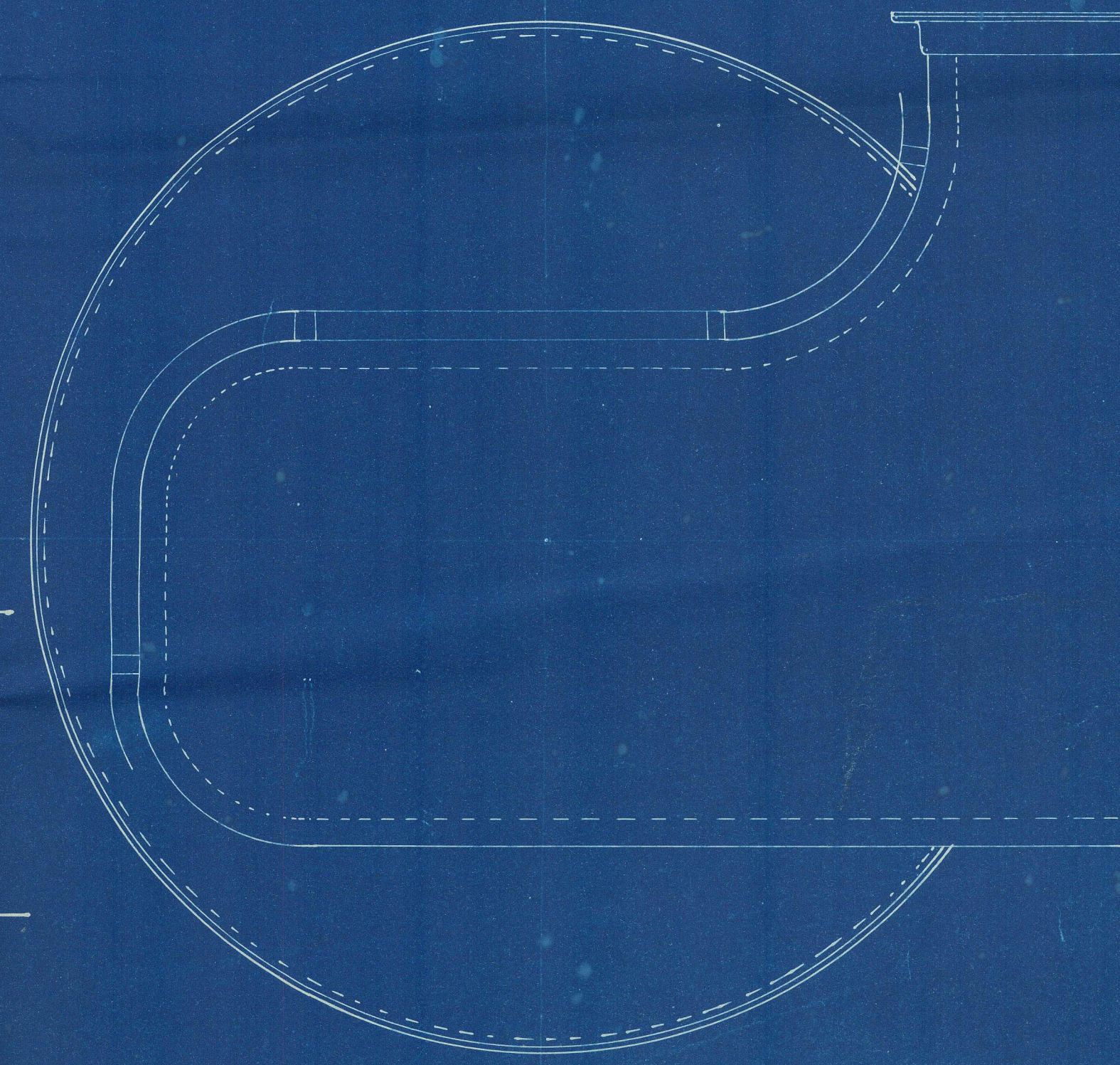
LONGITUDINAL SECTION



FRONT



BACK



BACK WITH SMOKEBOX

HEATING SURFACE	GATE SURFACE
TUBES 645.33 "	27 "
FURNACES 76.25 "	
CHAMBER 42.5 "	RATIO G.S. = 1.
TUBE PLATE 20.5 "	H.S. = 30.
TOTAL 834.58 "	

NOTE: LANDINGS OF SHELL AT CROSS SEAMS
MUST NOT BE LESS THAN $\frac{1}{16}$ "

TWO STEEL COMPOUND BOILERS. 18'-0" LONG. x 7'-6" DIAM.
FOR
120 LBS. WORKING PRESSURE.
TO
"B.O.T." AND "LLOYDS" SURVEY. SCALE. 1" = 1 FOOT.
NO. 97/98.