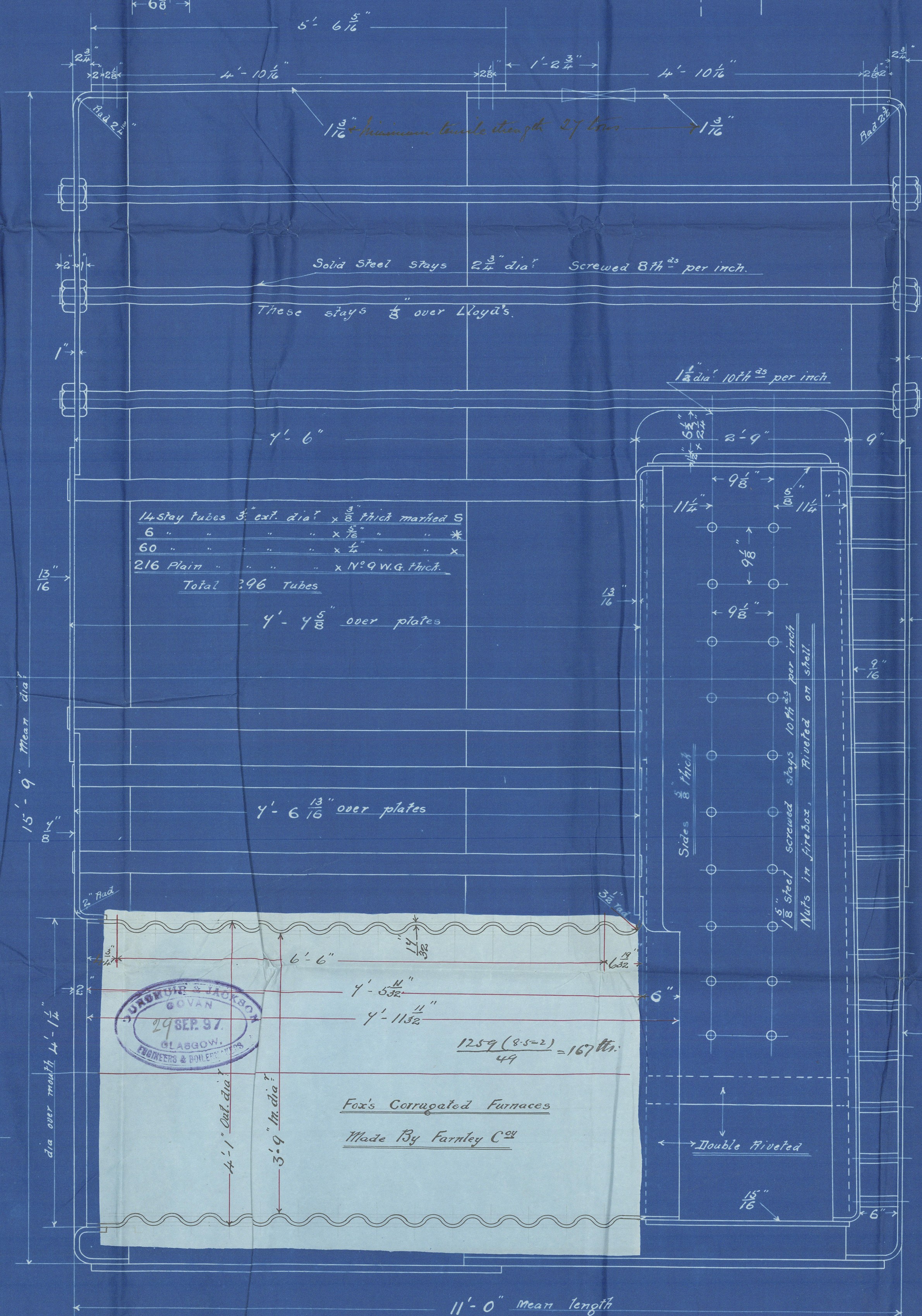
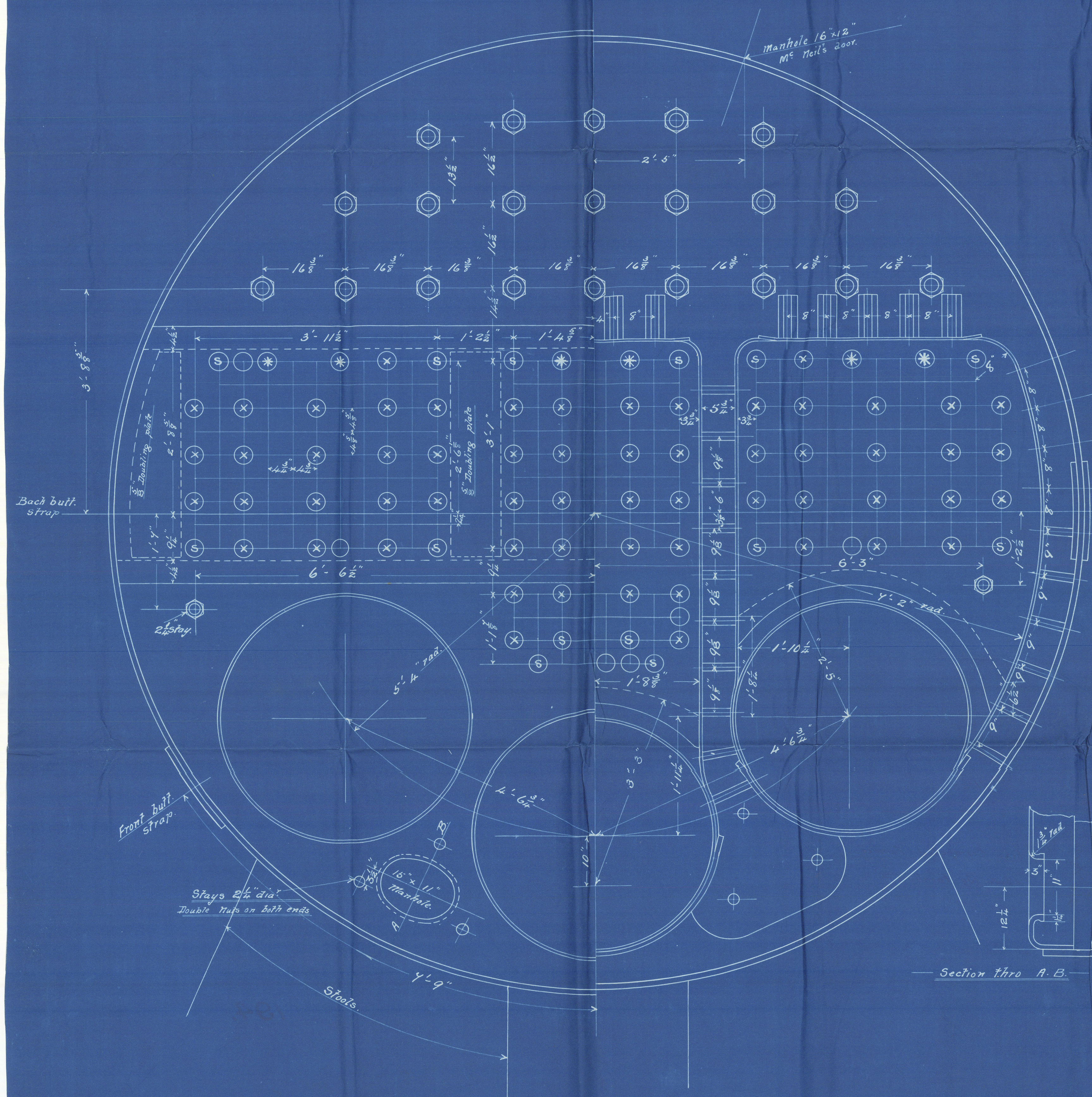


To Lloyd's Requirements      Working pressure 160 lbs. per sq.



Marginal Stays shown thus  
 $1\frac{3}{4}"$  dia<sup>r</sup> 10 #<sup>25</sup> per inch  
Nuts on both ends.

STEEL BOILER No 194.  
SCALE 1 INCH = 1 FT.



Mauri Bodci

3

Duncan Jackson  
(K. 194)

for

R. Duncan 167 K. 281 5/16

160 lb<sup>2</sup> working pressure

S.S. "Denevell"

GLASGOW.



Report No. 16237

GLH342-0070



© 2021

Lloyd's Register  
Foundation