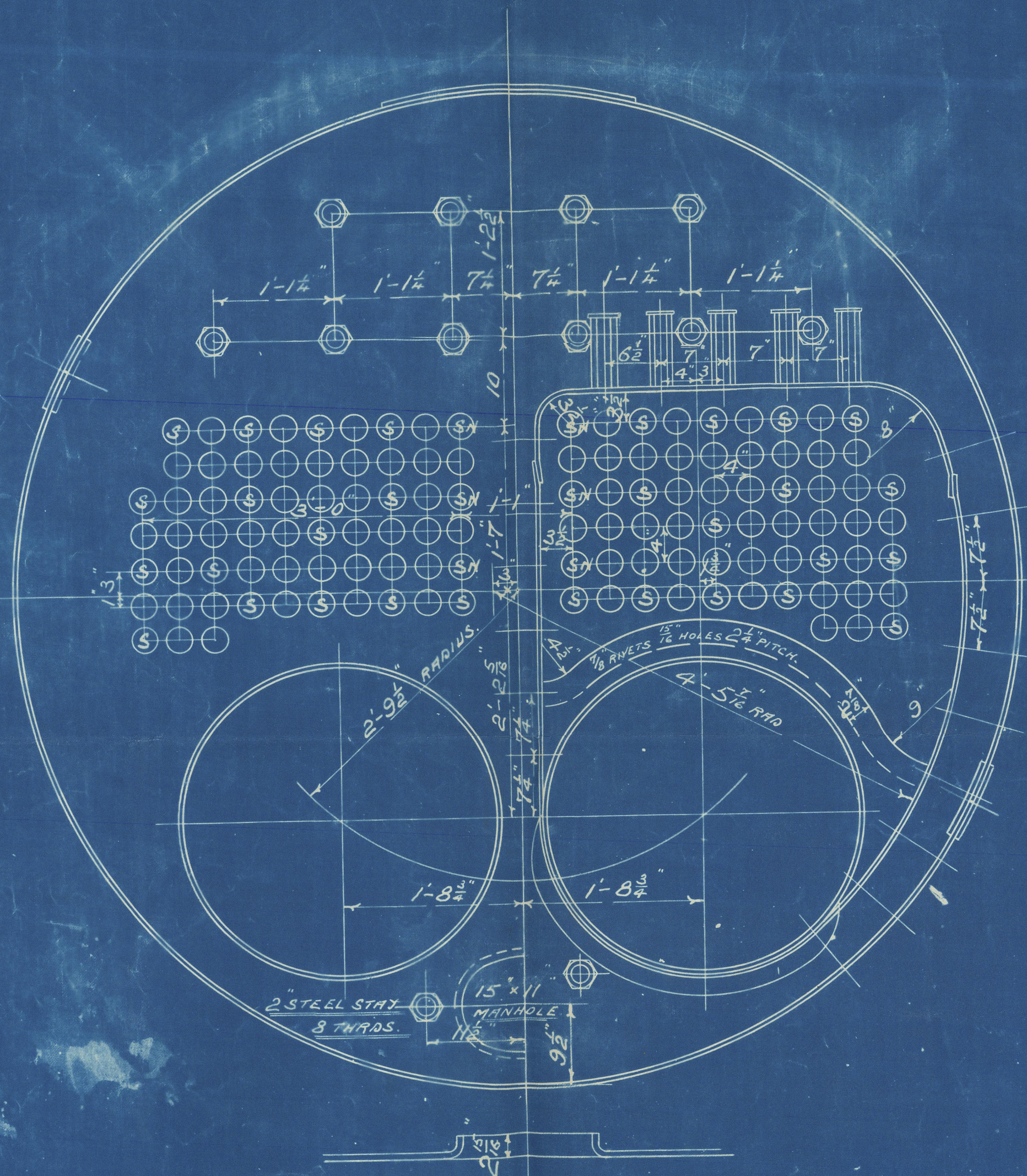
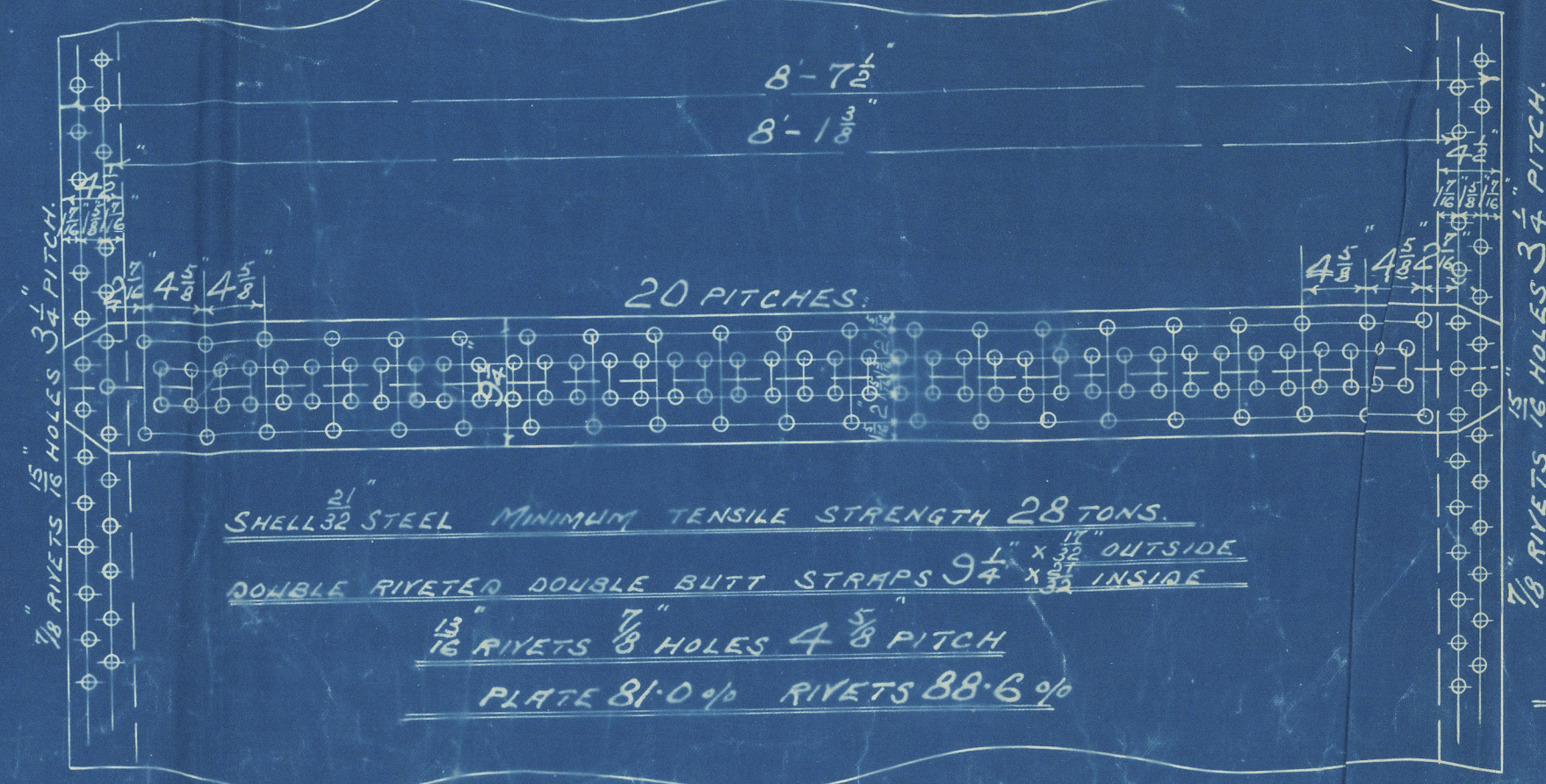
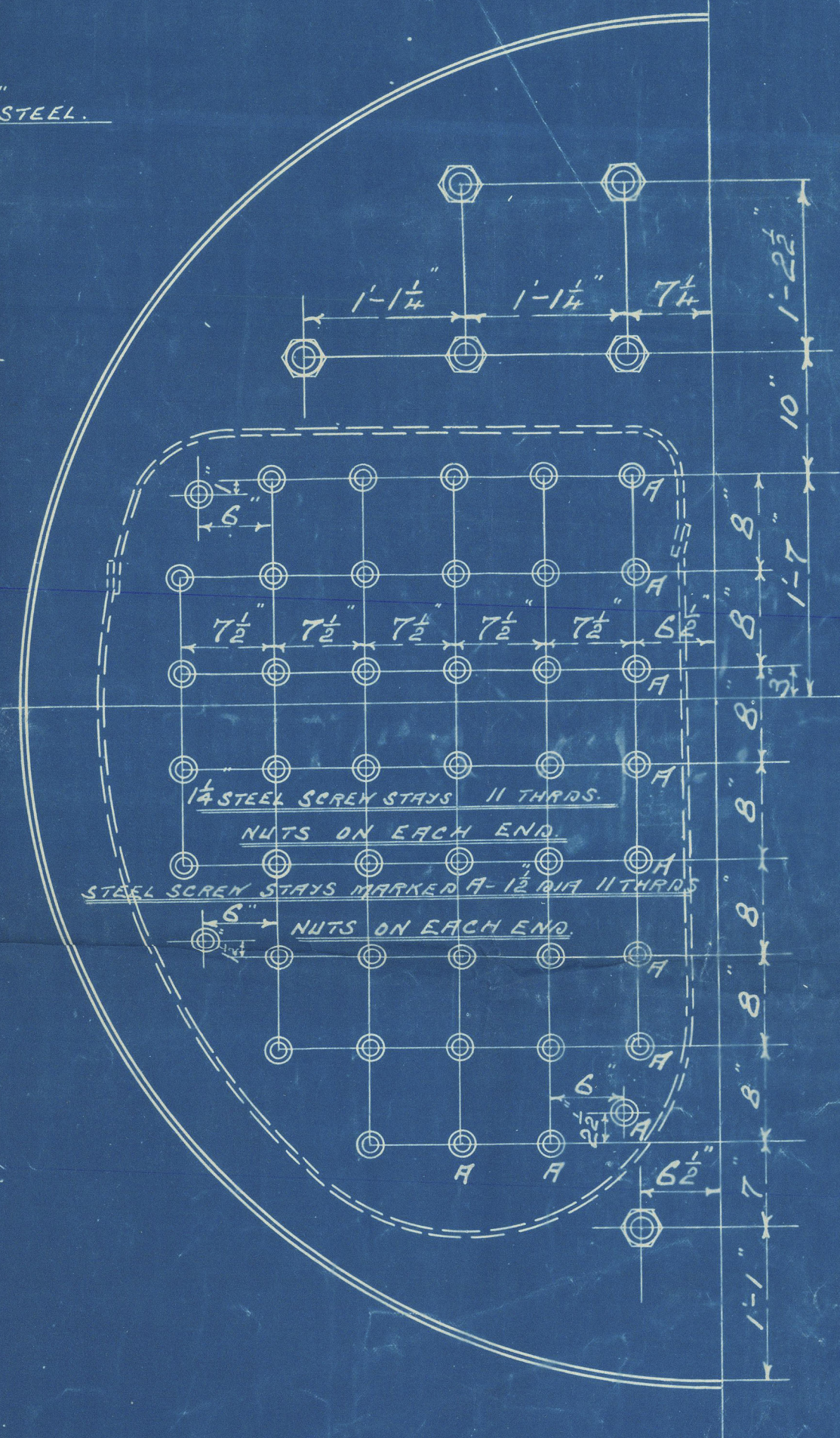
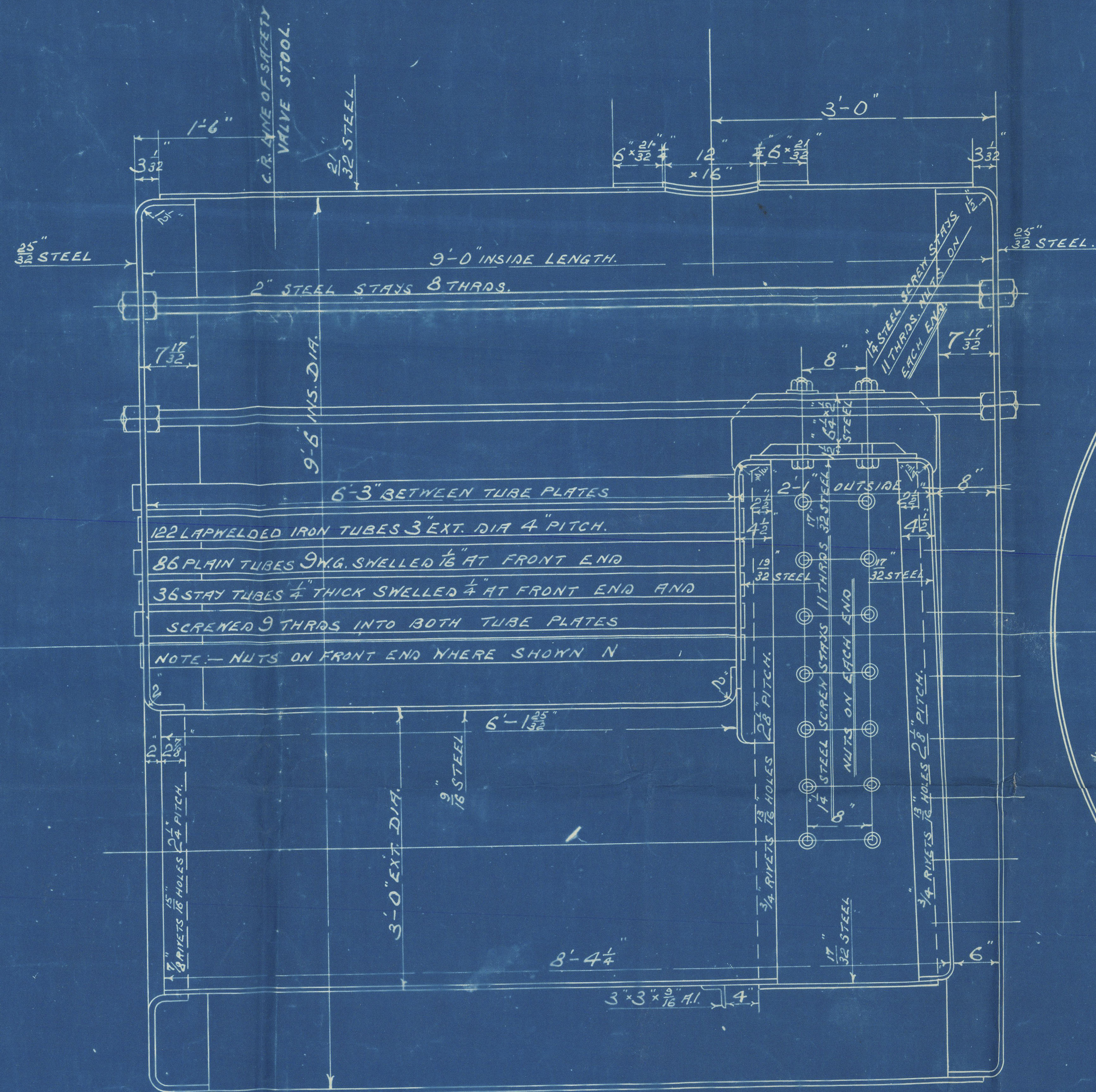


J.L.
9/8/05



MARINE BOILER.
9'-6" DIA. x 9'-0" LONG FOR 130 LBS. W.P.
UNDER LLOYD'S SURVEY.
SCALE 1" = 1 FOOT.



HEATING SURFACE ON TUBES	598.8 #
" " " FURNACES	59.0 "
" " " CHAMBERS	95.0 "
TOTAL	752.8
GRATE AREA 5'-0" BARS	29 #
RATIO G.A. TO H.S.	1.26
AREA THRU TUBES	686.3 #

duplicate of the 2nd
plan approved
J.E.S. 14/9/05
E.M. 14/9/06

BOILER NOS 280.-1.

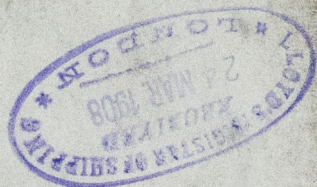


Marine Boilers

N^{os} 280-1.

9'6" x 9'0" for 130 lbs W.P.

LD
Duplicates of 249 + 270
In 280 for shipment
to Corral.



Gls. Rpt. 25013

26.332

W. Scott

S. S. © 2021 Scotteran
Lloyd's Register
Foundation

GER 356-0021