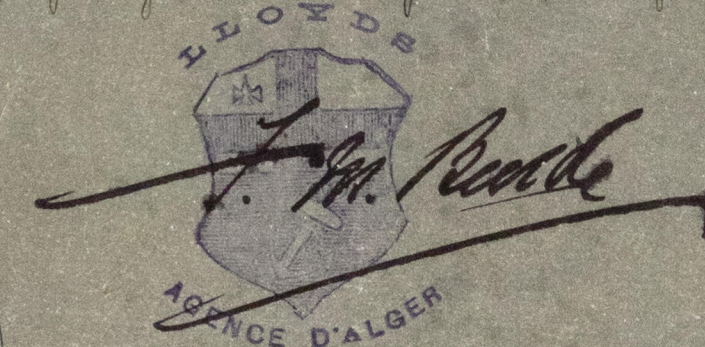


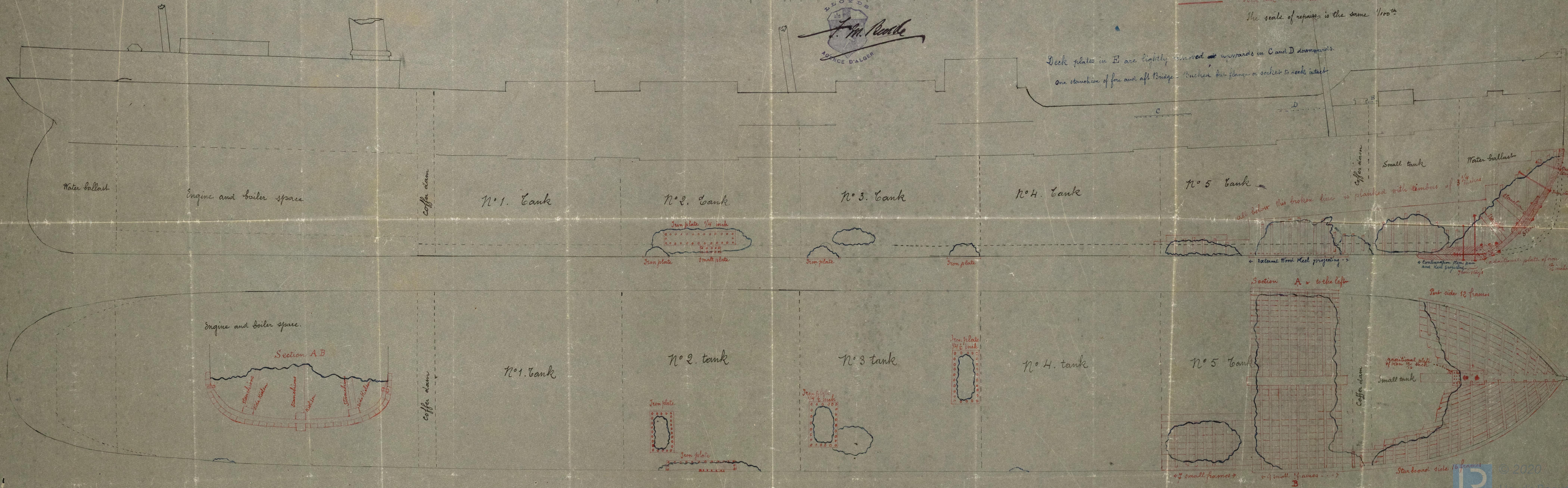
S.S. "Clam".

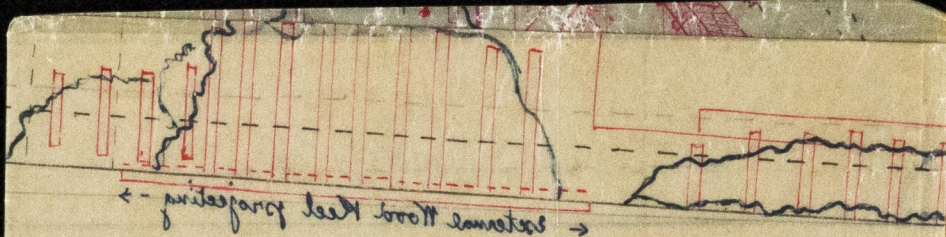
Showing temporary repairs (Exterior) indicating position of projecting timber as a guide to placing blocks when dry docking in U.K.



Black ink means the ship in her normal state
Blue ink means the ship as she is after collision
Red ink means the repairs temporary made in Algiers
The scale of repairs is the same 1/100th

Deck plates in E are lightly removed upwards in C and D downwards.
One stanchion of fore and aft Bridge - Bucked but flange or socket to deck intact





Section 2
A w to the left

Engine and Boiler space.

Section A B

No 2

Coffin space

Section B
A w to the left

Section A B
A w to the left

HPL387-0136.1

Lloyd's Register
Foundation