

9.1.79

No 4

S.S. "OXTON"

Glasgow Report No 4909

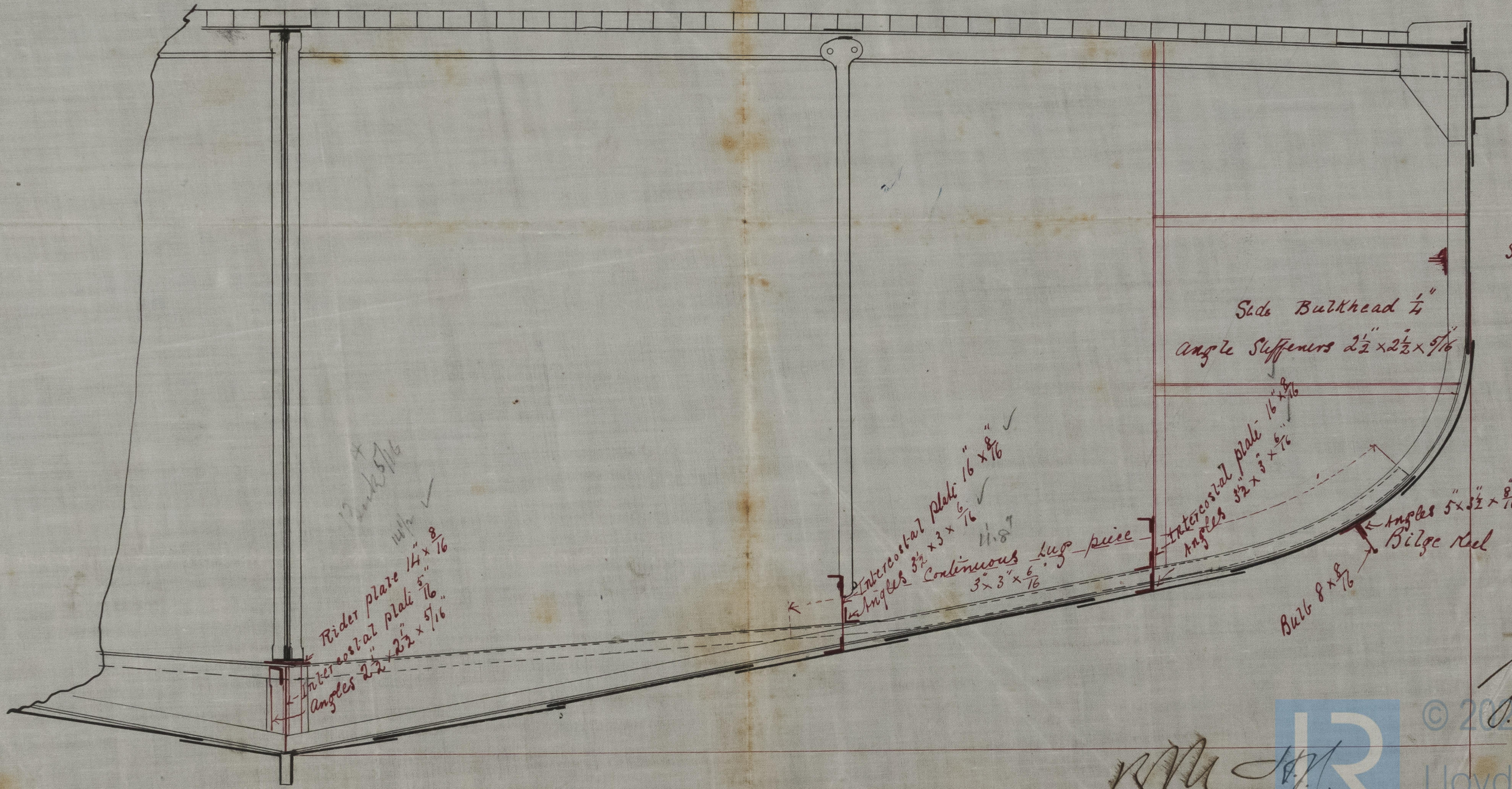
Rec 6/1/79

No 214

Building by Messrs W. Sims & Co. Ltd.

Copy of sketch received 30 Dec 1878 from the Shipyard Manager  
Messrs Sims & Co. Ltd.  
Rugby

Scale  $\frac{1}{2}$  Inch to one Foot



Side Stringer  
4 x 3 x 5 3/8

Side Bulkhead 1/4

Angle Stiffeners 2 1/2 x 2 1/2 x 5/16

Rider plate 14 x 8/16  
Intercoastal plate 5 x 7/16  
Angles 2 1/2 x 2 1/2 x 5/16

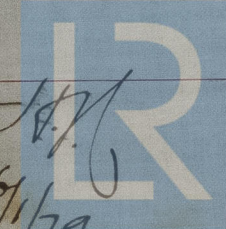
Intercoastal plate 16 x 8/16  
Angles 3 1/2 x 3 x 6/16  
Continuous lug piece 3 x 3 x 6/16

Intercoastal plate 16 x 8/16  
Angles 3 1/2 x 3 x 5/16

Angles 5 x 3 1/2 x 8/16  
Bilge Keel

Bulb 8 x 8/16

1879  
6/1/79



© 2012  
Lloyd's Register  
Foundation