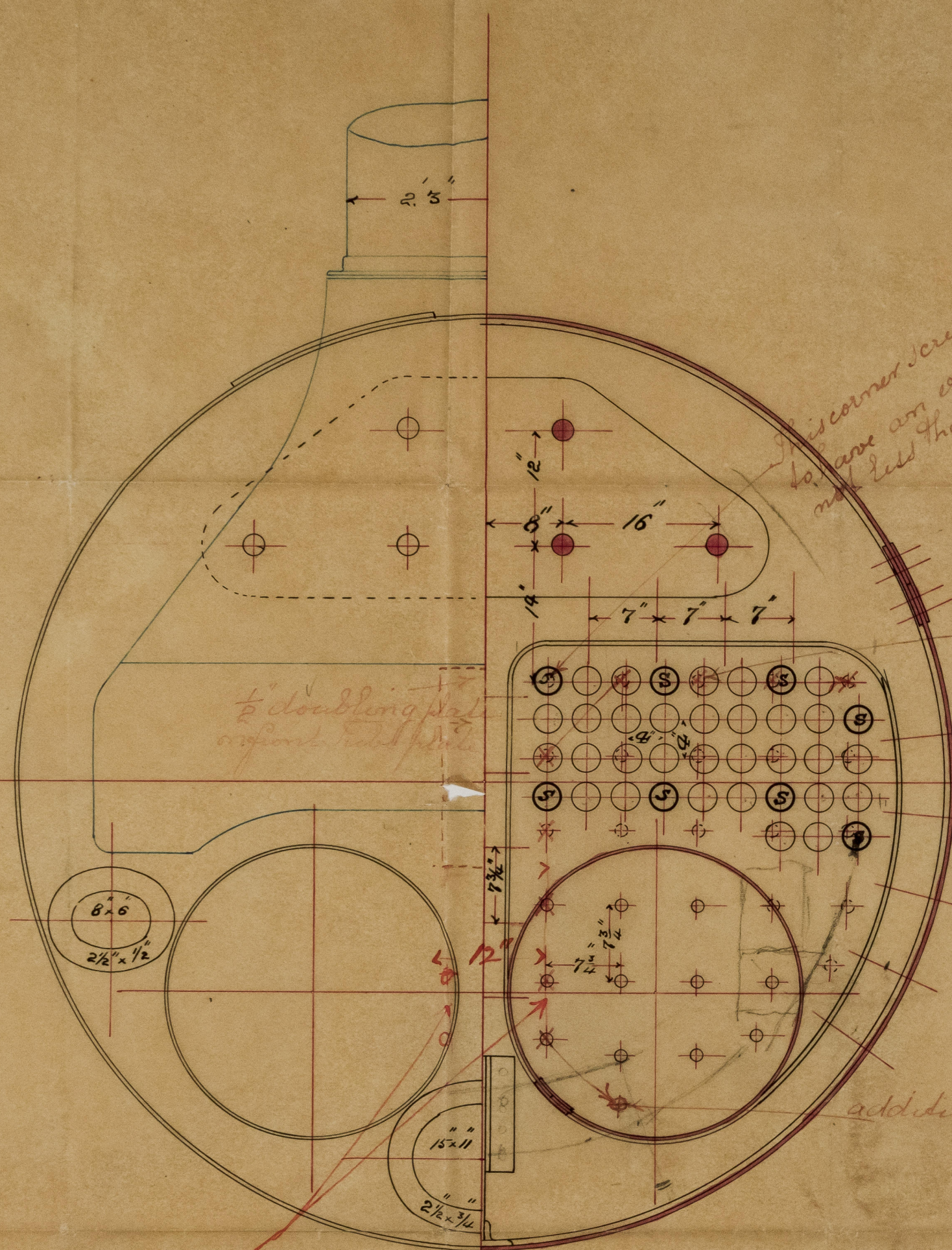


Ref: 1:1:95



This corner screwed stay to have an effective area of not less than 1.1959 inches

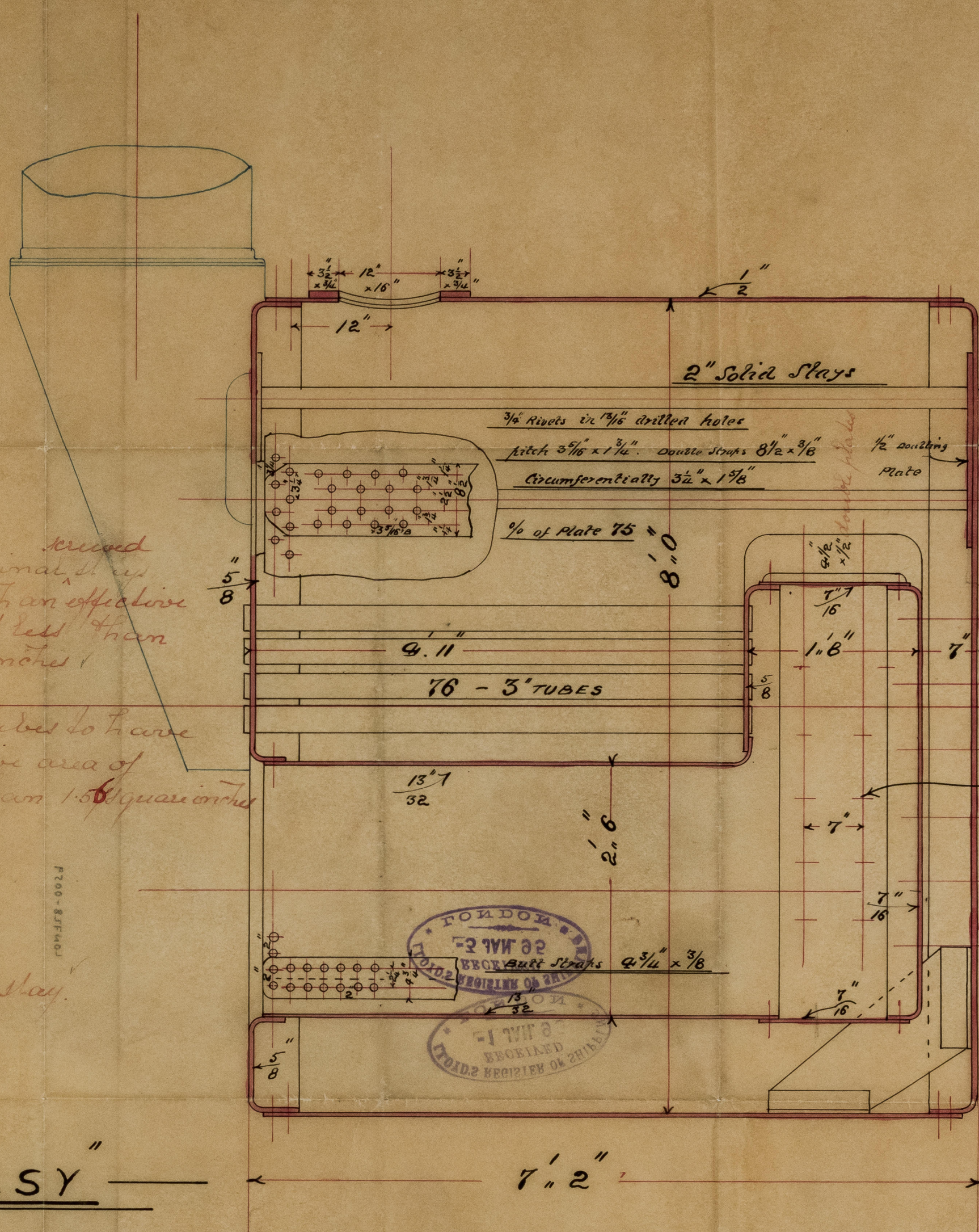
Shell joint

These Marginal stays to have an effective area of not less than .91 square inches

All stay tubes to have an effective area of not less than 1.56 square inches

additional screwed stay

These two rows of stays to be pitched not more than 12" apart.



Effective area of stay 2.51

Effective area of stay .76

S.S. "ELSY"

STEEL MARINE BOILER 8 FT DIAM X 7 FT . 2 INS LONG

WORKING PRESSURE 90 LBS TEST PRESS 180 LBS

SCALE 1 in = 1 ft

Ref: 1:1:95



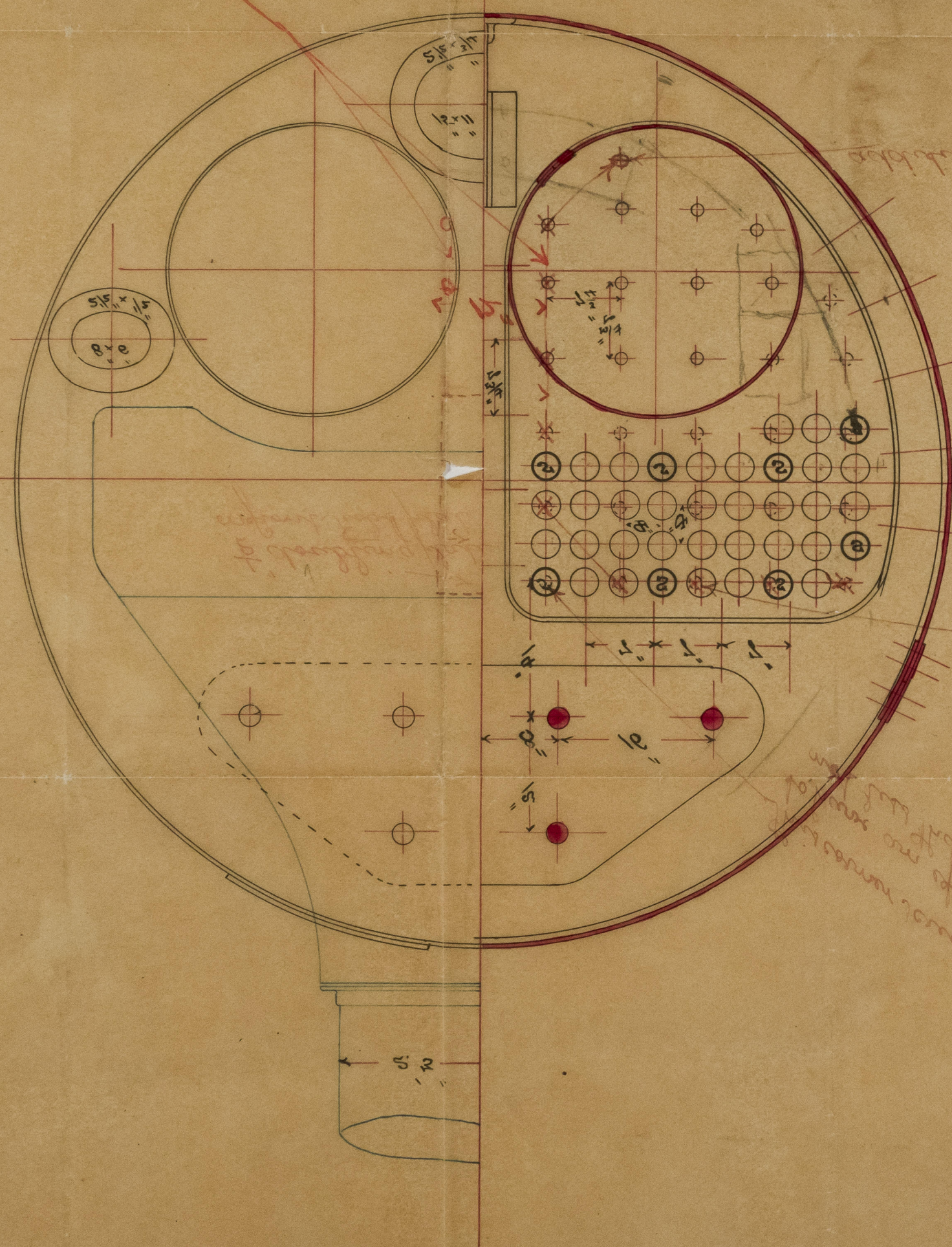
21.1.25

WORKING 66E2208E 20 TB2 1E21 66E22 180 TB2

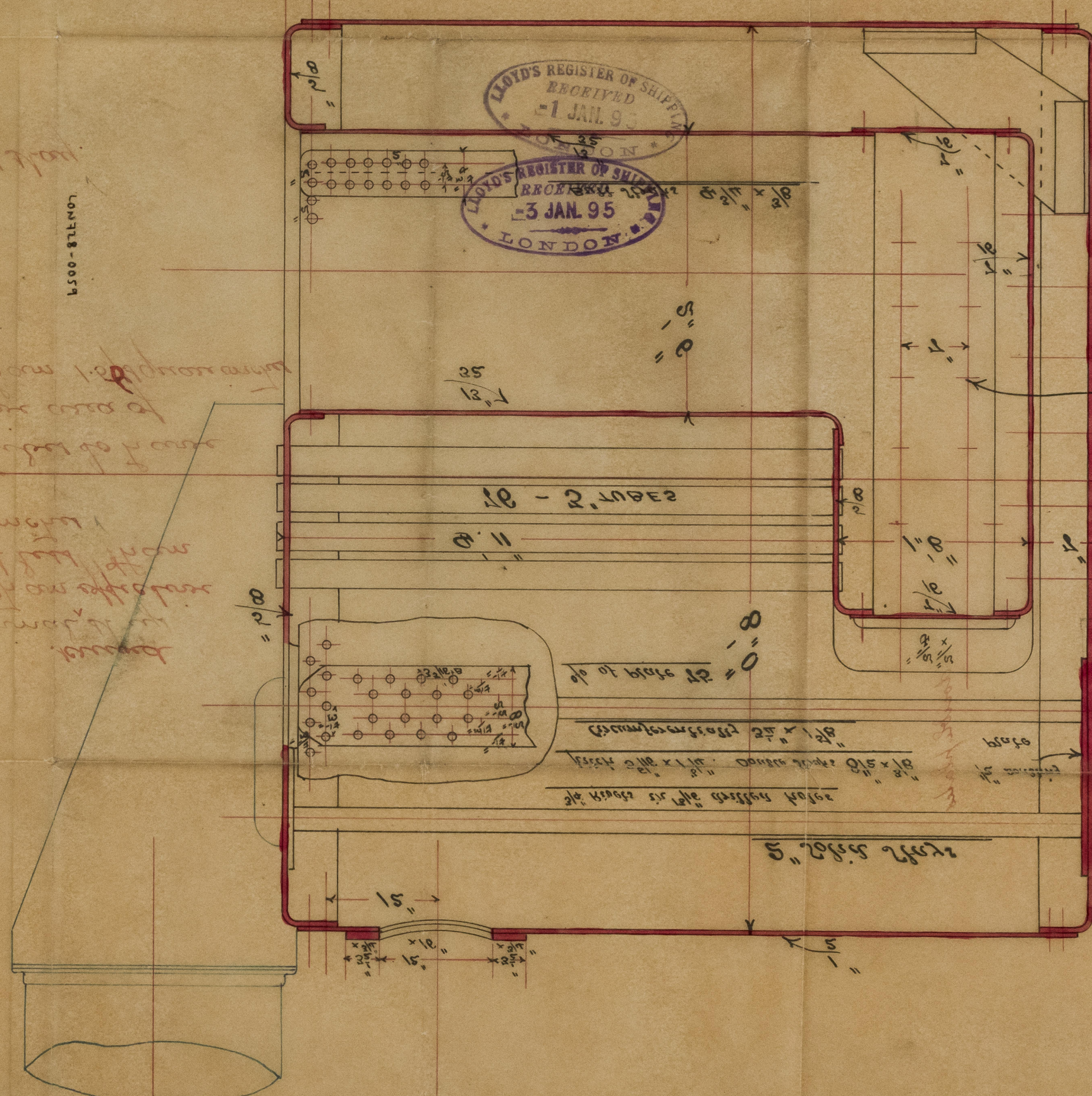
71 = 145

2.2. 7721

5-1



602728-0059



Exhibits cases of 25th. 19

SCHEM 21012

1/8 WOLLE D

Ellegene over of 2502 5:21

*[Handwritten signature]*