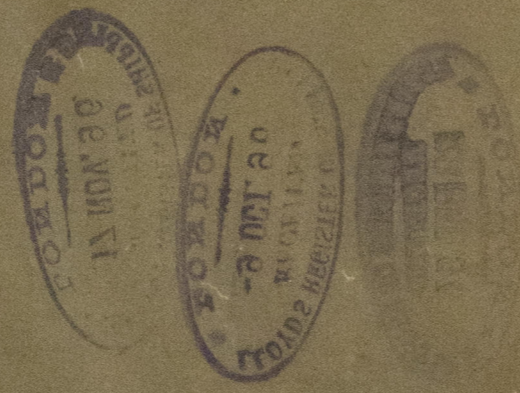


Rh
12:11:96



General Arrangement Steam, Bilge, & Sea Pipes etc of New Twin Screw Steamer

Thos A Young & Son
21 Sep 96.

1/2" to 1 ft.

Steam pipes & flow of etc all right.

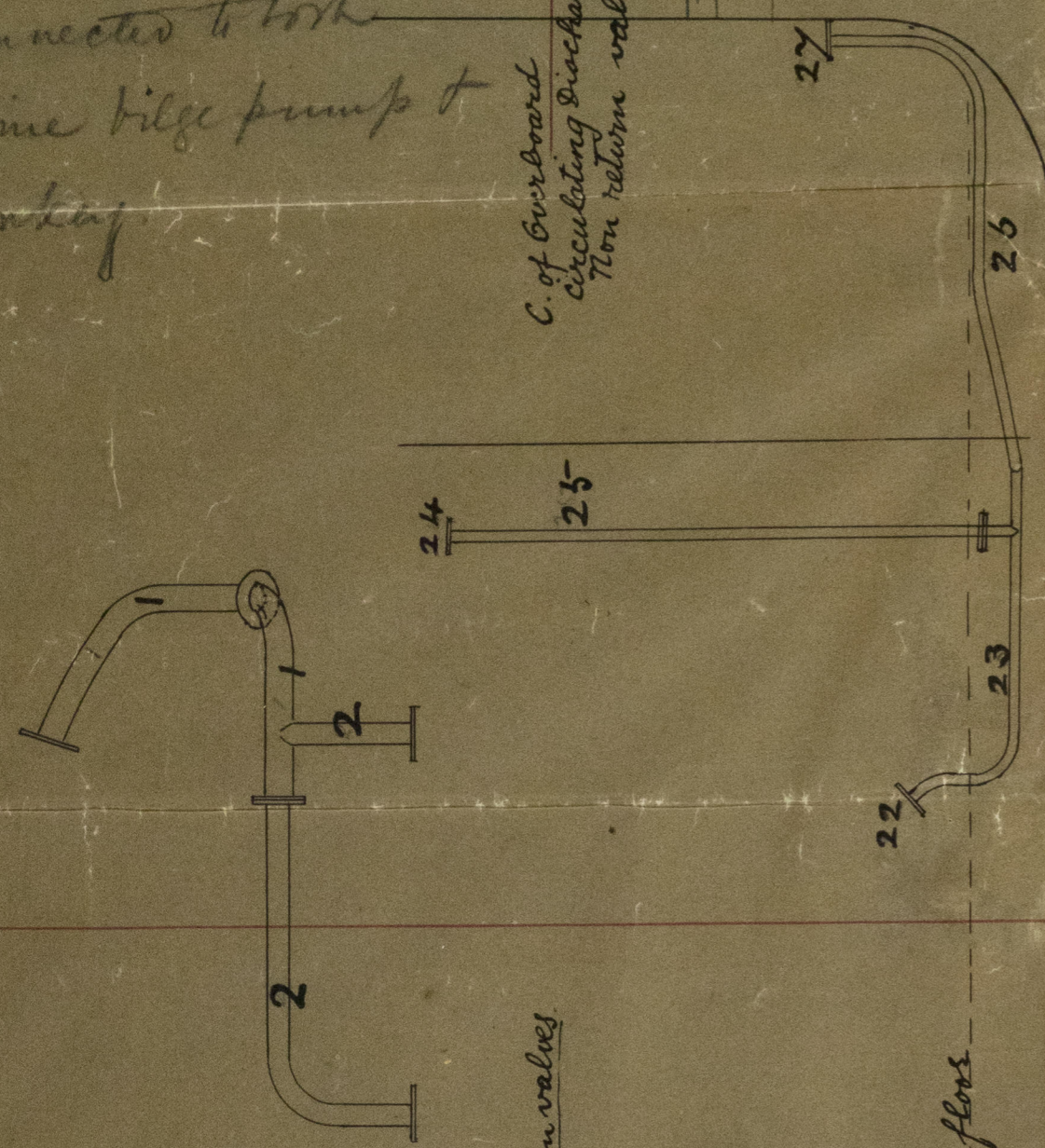
Bilge Injection in E.R.

Separate Donkey for " " Capable of being used when
bilge pumps are in hold.

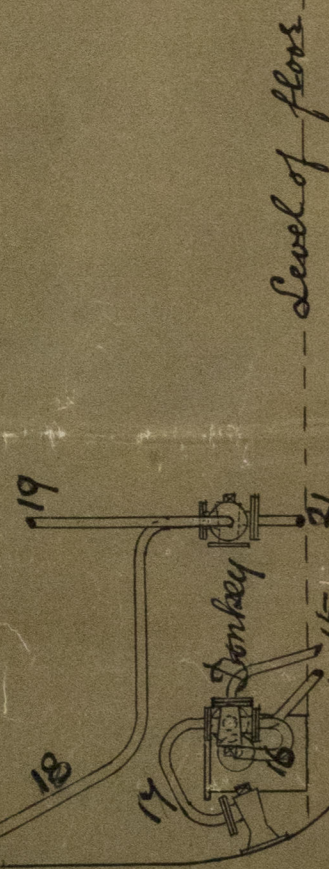
hold suction & Eng room suction to be
connected to both

Engine Bilge pump &
donkey.

C. of Overboard
circulating discharge
non return valve.



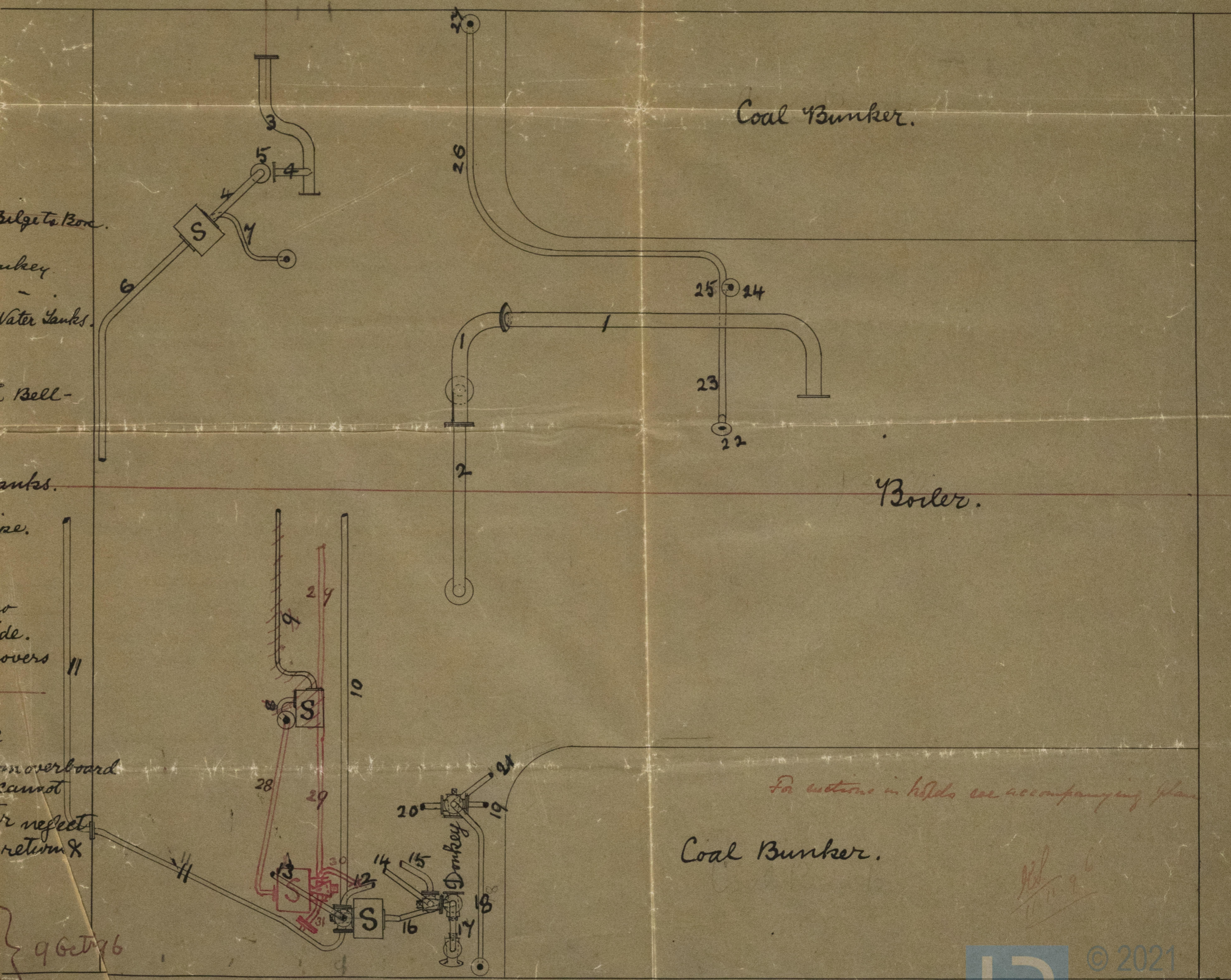
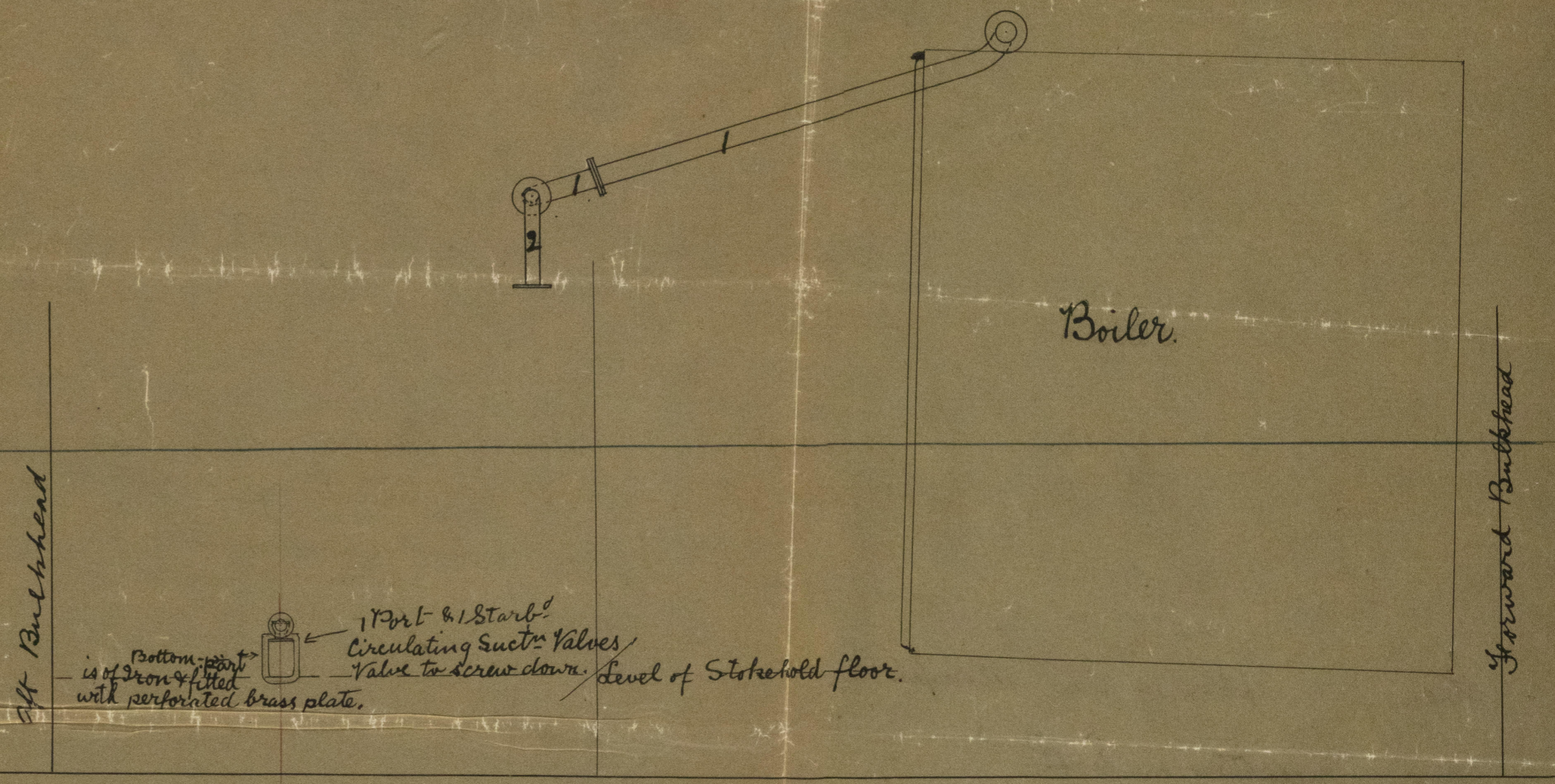
C. of Bilge Donkey & Hotwell Discharge non-return valves
to be overboard



Level of floor

Key:-

1. Main Steam Pipe 4" dia x 10 B.W.G. (Copper)
 2. Branch " " 2 3/4" x 11 " "
 3. Circulating Suction pipe 2 1/2" dia.
 4. " " Branch " 2" dia to Strainer Box.
 5. 2" Non-return screw-down valve (loose valve).
 6. 2 1/2" Suction pipe from Bilge to Strainer-box.
 7. Port Bilge Pump Suction pipe from Strainer-box.
 8. Starboard Bilge Suction pipe from Strainer-box.
 9. Bilge Suction through Strainer-box to donkey.
 10. Aft Compartment Bilge Suction through cock & Box to donkey.
 11. Forward " " " " " " " "
 12. Donkey Suction from Cocks leading to Forward & Aft Fresh Water Tanks.
 13. Donkey Suctions from Hotwells.
 14. " " " " " " " "
 15. " " " " " " " "
 16. " " " " " " " "
 17. " " " " " " " "
 18. Donkey Delivery Overboard through check valve.
 19. Donkey Delivery to deck (for wash down)
 20. " " " " " " " "
 21. " " " " " " " "
 22. Blow-cock (with locking handle) & external blow pipe.
 23. Seum Cock & external Seum-pipe.
 24. Combined Blow & Seum-pipe
 25. Blow-cock on Shipside to have locking handle, also
spigot passing through plate & brass plate outside.
 26. Bilge Strainer boxes of ample size with removable covers
for clearing out muck.
- All pipes of copper.
- N.B. All cocks & valves, & Strainers are above
level of floor. Plate for easy access. ^{from overboard}
All cocks are arranged so that water cannot
be run into vessel by carelessness or neglect.
all overboard discharge valves are non return &
considerably above deep water line.
28. Pipe from Starboard Bilge Pump to Strainer Box
 29. " " " " " " " "
 30. " " " " " " " "
 31. " " " " " " " "
- all Bilge Suction pipes 2" dia also Ballast Suction
pipes



For sections in holds see accompanying plan

