

NOTE

THESE MASTS TO CARRY FORE & AFT SAIL ONLY

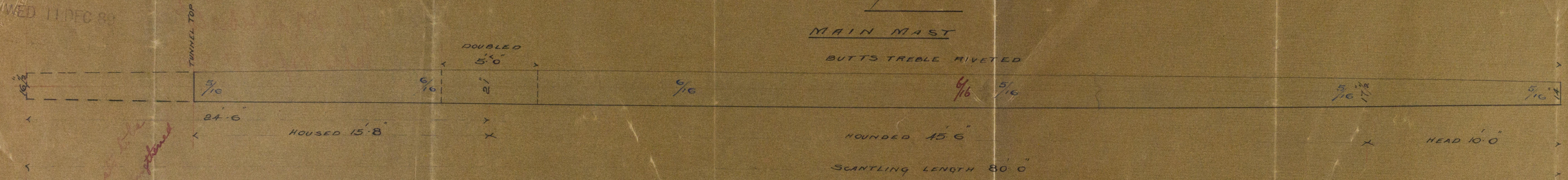
IRON MASTS

NO 371

SCALE 1/4 IN TO 1 FOOT

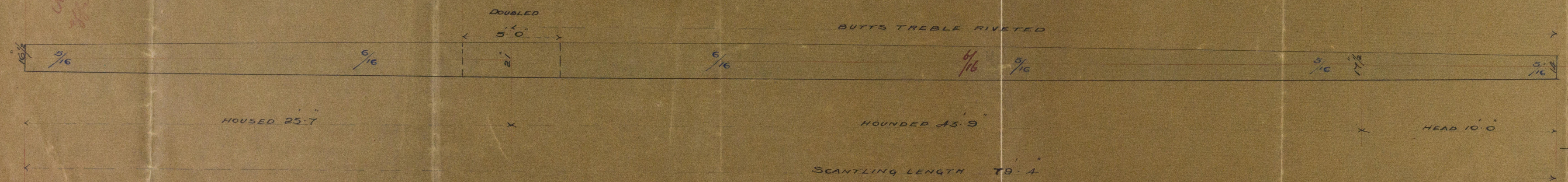
MAIN MAST

BUTTS TREBLE RIVETED

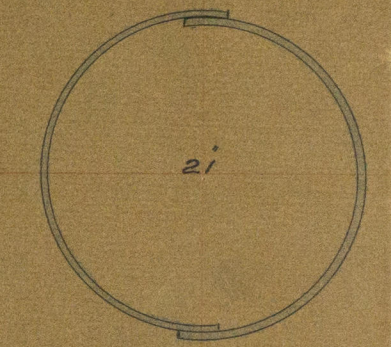


FORE MAST

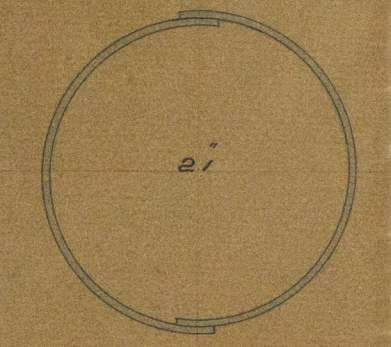
BUTTS TREBLE RIVETED



SECTION AT PARTNERS



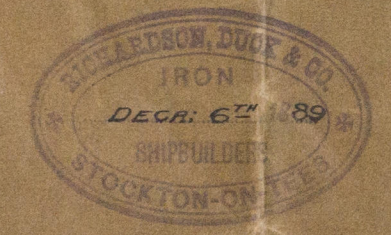
SECTION AT PARTNERS



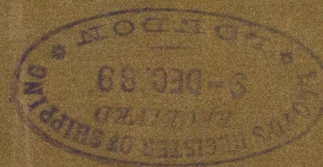
NOTES

- BUTTS TREBLE RIVETED WHERE MARKED, REMAINDER DOUBLE.
- STRAPS 1/16 THICKER, TREBLE RIV. STRAPS 1/8 DOUBLE RIV. 1/2.
- SEAMS SINGLE RIV 5/8 RIVETS, ALL FLUSH OUTSIDE.
- PLATES 9.0 LONG, BUTTS SHIFTED 4.0, 2 PLATES IN ROUND.

Rivets on lands and butts spaced 5 diameters apart centre to centre



Mast Plan of
Richardson Duck of 341
S.S. Montebello
Intro Report No. 88



© 2019

Lloyd's Register
Foundation

MDBT39/234