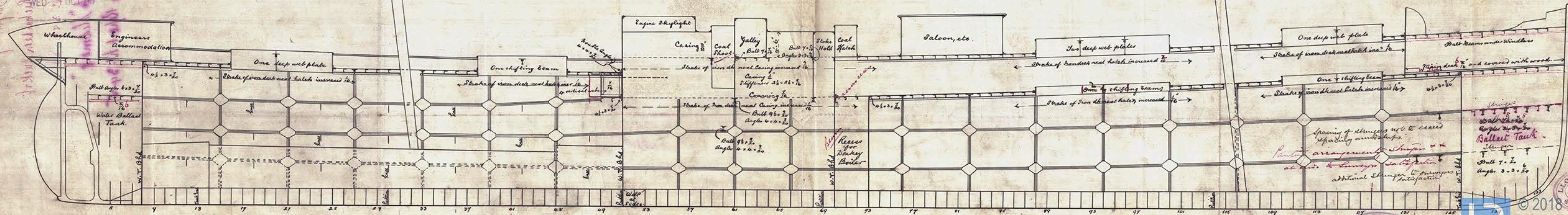


TUE 26 AUG 90  
MON 15 SEP 90  
WED 2 OCT 90

270' x 36' 6" x 19' 1 1/2" cloulded.



H.L.  
25/8/90 13/9/90

SCALE - 1/8" INCH TO 1 FOOT

RICHARDSON, DUCK & CO  
15 AUGUST 90  
STOCKTON-ON-TEES

LLOYD'S REGISTER OF  
ROYAL EXCHANGE  
MIDDLEBOROUGH-ON-TEES  
18-8-90  
SHIPPING

R

Lloyd's Register  
Foundation



Profile of  
Messrs Richardson & Co.

No. 342 S.S.

S.S. "Sledmere"

Intro Report No. 345



© 2018

Lloyd's Register  
Foundation

MDR74146

3/12/1900