

Length from stem post to fore part of stem post 312'-0"  
 Breadth moulded 40'-3 1/2"  
 Depth to stem assuming 10" R of Beam 24'-5"  
 12" depth in length 12 to 13  
 7" breadth 12 to 13

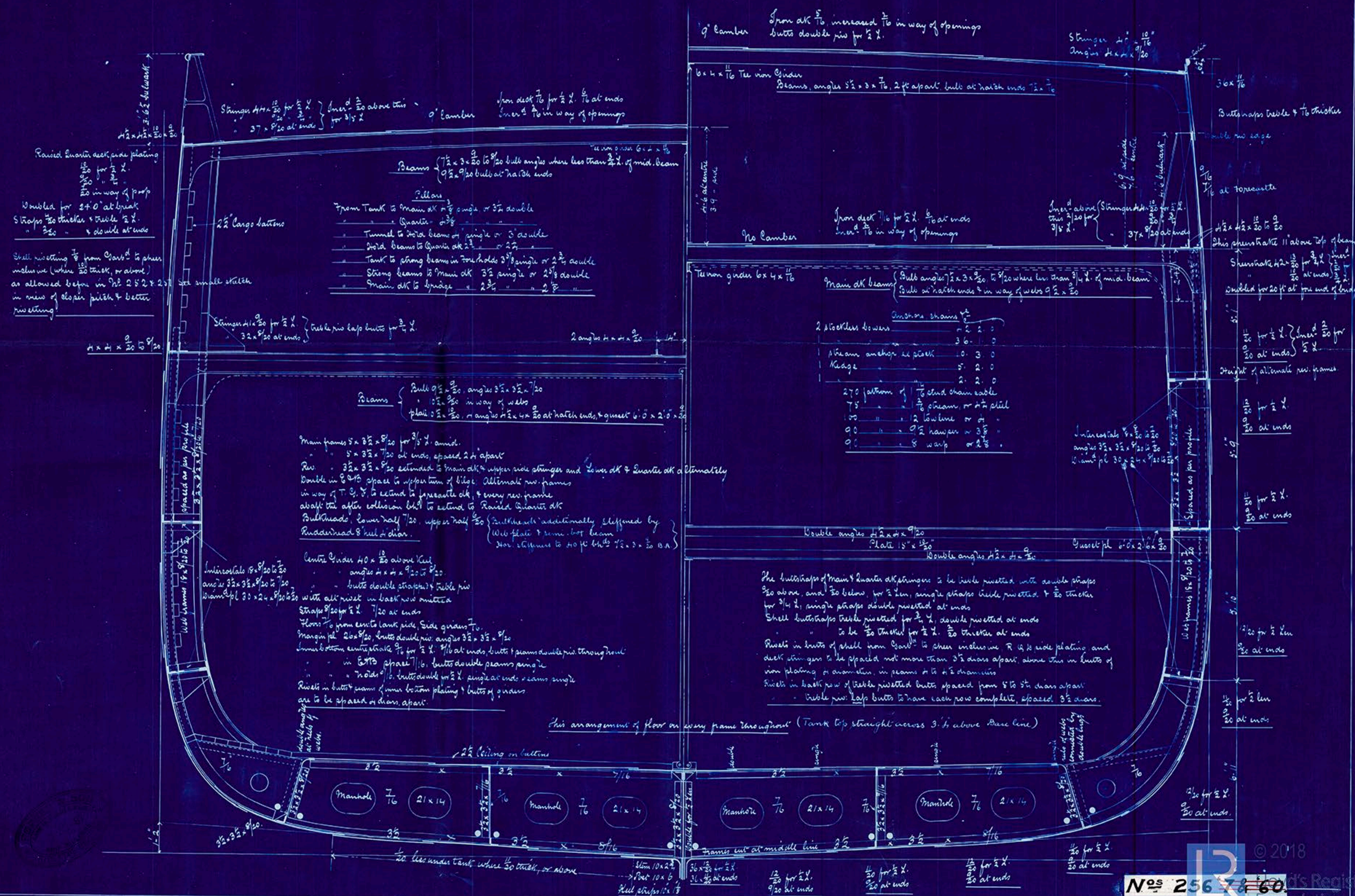
# MIDSHIP SECTION.

SCALE 1/2 INCH TO ONE FOOT

DIMENSIONS 313'-8" x 40'-6" x 21'-6" TO GND FLOOR  
 23' 7" MOULDED  
 20' 3" HOLD  
 TO CLASS 100A "STEEL" AT LLOYDS

Minerals  
 39.91 = 24.5 Cwt  
 20.15 = breadth  
 21.08 = depth assuming 10" round of beam  
 33.3 floor  
 84.47 x 312 = 26354 = 85 and 26000  
 2959  
 29313 = 30020 for Equipment.

Top galleon fore-castle beams 3 1/2 x 3 1/2 angles, 2 ft apart  
 bulk 7 1/2 x 7 1/2 angles 3 x 3 1/2 under in under  
 stinger 2 1/2 x 7 1/2 angles 3 1/2 x 3 1/2  
 deck iron 1 1/2 thick  
 side plating 7/16, butts double, edges single  
 Prop beams 7 x 3 1/2 bulk angles 3 1/2 x 3 1/2  
 stinger 2 1/2 x 7 1/2 angles 3 1/2 x 3 1/2  
 side plating 7/16, butts double, edges single  
 deck wood.



Midship Section

Roper & Son's No 256.

S.S. "Alton Tower"

Mebo Report - No 363

MD8741A/67



© 2018

Lloyd's Register  
Foundation