

Principal Dimensions.

LENGTH B.P. 307' 0"
BREADTH Extreme 41' 0"
DEPTH IN HOLD 22' 0" to Lloyd's Floor.
DO MOULDED 23' 7"
TONNAGE GROSS 2840 Tons
DO NETT 1865

Class 100 A1 Lloyd's.

Steel.

Scale $\frac{1}{2}$ = 1 foot

Equipment

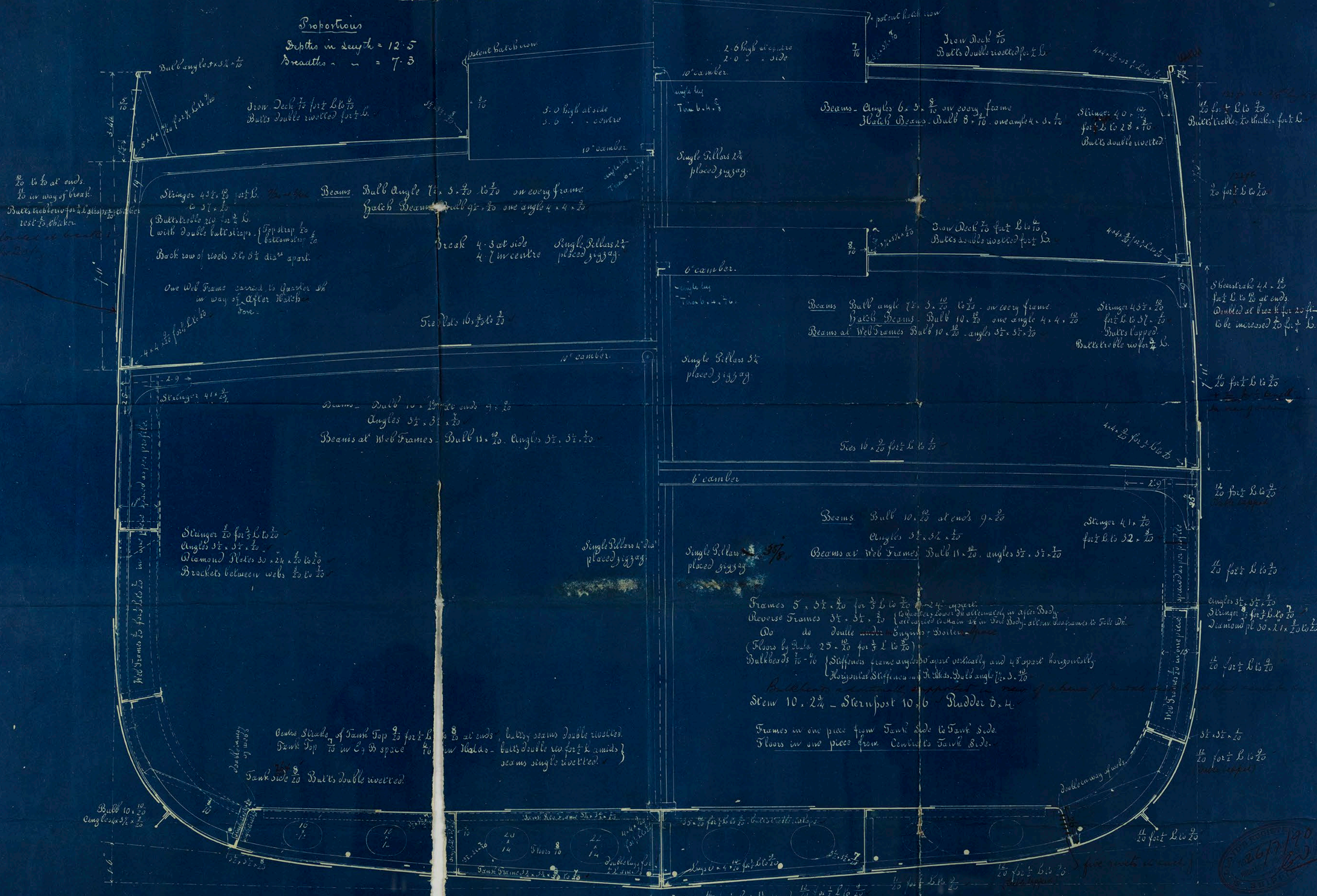
2 Bowers 34 cat in stock
1 do 29 " " " "
1 Steam 10 " " " "
1 Sledge 5 " " " "
1 do 1 " " " "
2 70 Fathoms 1 70 Stud Chain Cable.
75 do 1 70 Steam Chain.
100 do 12" Towline.
40 do 9 1/2" Bower.
5 do 8" Warp

Scantling Numbers

Half Breadth 20' 4 1/4"
Depth 24' 5"
Half Girth 40' 1 1/2"
54.11 x 305.4 = 25925 Scantling
29164 Equipment

Proportions

Depth in Length = 12.5
Breadth " " = 7.3



Midship Section
of
Messrs Richardson Duck & Co
No 348 S.S
S.S. "Avon"
Intro Report No 367

