

S.S. "Chelsea" S.W.C. Report No. 18054

Midship Section S S No 546

Scale 1/2" = 1 foot.

Top 36'-0" long.

Sideplating 1/2" thick.
Stringer plate 20 x 1/2"
Angle 3 1/2 x 3 x 1/2"
Tie plate 7 x 1/2"
Angle Beams 6 x 3 x 1/2"
Deck 3" thick

Principal Dimensions

Length between Decks 230'-0"
Breadth Moulded 33'-0"
Depth 17'-2"
Depth of Hold (to ordinary floor) 16'-2"

Bridge 42'-0" long.

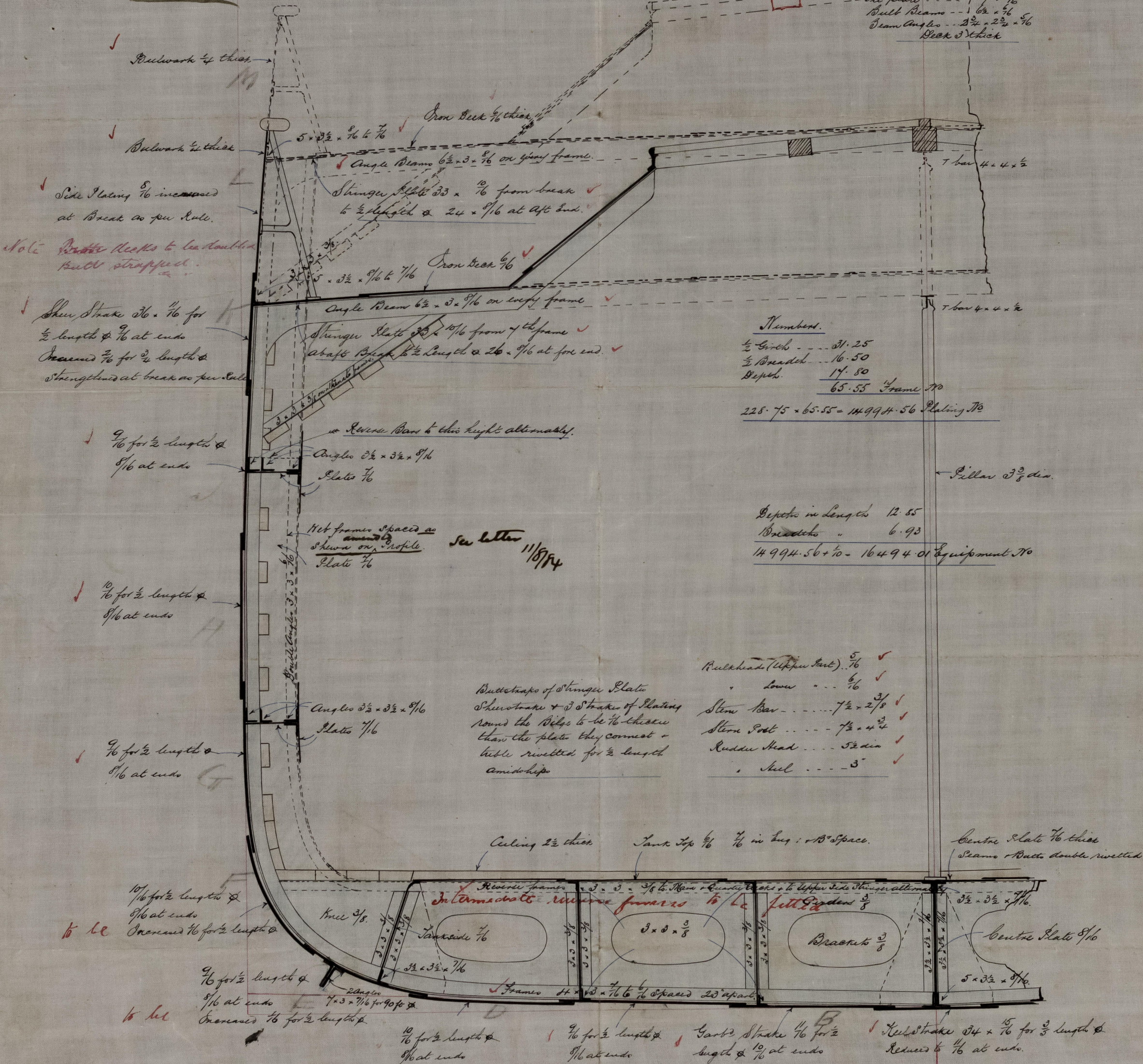
Sideplating 1/2" thick.
Stringer plate 20 x 1/2"
Angle 3 1/2 x 3 x 1/2"
Tie plate 7 x 1/2"
Angle Beams 6 x 3 x 1/2"
Deck 3" thick

Forecastle 28'-0" long.

Sideplating 1/2" thick.
Stringer plate 20 x 1/2"
Angle 3 1/2 x 3 x 1/2"
Tie plate 7 x 1/2"
Angle Beams 6 x 3 x 1/2"
Deck 3" thick

Dr. to W.C.
14/8/84

Class 100 A Lloyd's



Numbers.
1/2 Girth 31.25
3/4 Breadth 16.50
Depth 14.50
65.55 Frame No
225.75 x 65.55 = 14994.56 Plating No

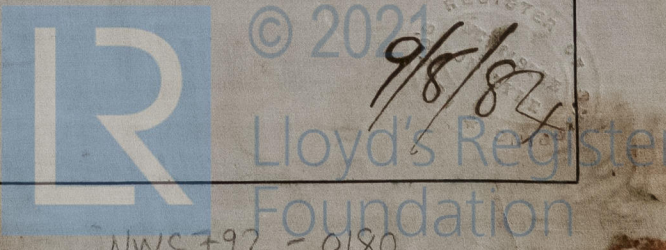
Depths in Length 12.55
Breadth 6.93
14994.56 x 10 = 16494.01 Equipment No

Rudderhead (Upper part) 5/16"
Lower 1/2"
Stem Bar 7 1/2 x 2 1/2"
Stem Post 7 1/2 x 4 1/2"
Rudder Head 5 1/2 dia
Keel 3"

Buttstraps of Stringer Plate
Shenstone & J Strakes of Plating
round the Bilge to be 1/2" thick
than the plate they connect &
be rivetted for 1/2 length
amidships

Intermediate transverse frames 1/2" thick
Tanks 1/2" thick
Brackets 3/8"
Centre Plate 1/2" thick
Scams & Butts double rivetted

All outside plating in way of double bottoms (except barboards and keel strakes)
to be reduced 1/2" in thickness when 1 1/2" or more.



NWC 792 - 0180