

# Midship Section

No. 555

Length 420' 0" 100m and 52' 4" 2 ft. mid to Upper Deck 52' 6"

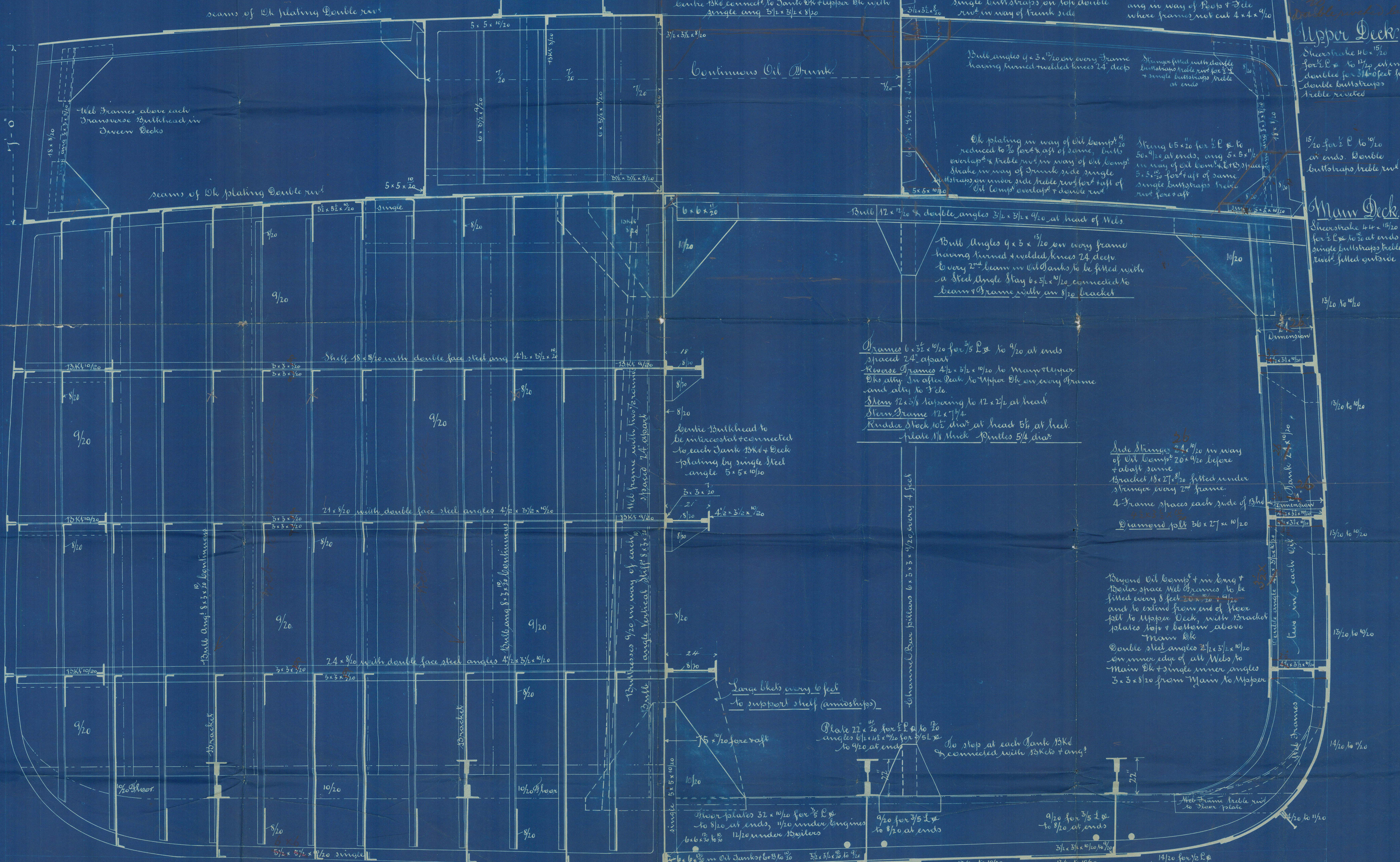
Class 100 No. 1. 3 Deck Rule

Scale 1/2" = 1 Foot

Centre 13th midcostal connected to  
thrustship 13th with ang ang 52' 4" 2 ft.

Depth in Length to Upper Deck 12.44  
do do Main do 15.71

1/2 Width 55.91  
1/2 Breadth 26.37  
Depth 33.60  
115.88  
1.00  
Drawing No 108.88 x 418.0  
Plating No 45512



James Laing  
Dupleford & Sons  
Sunderland.

27/1/96

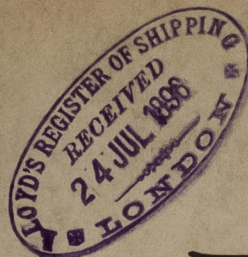
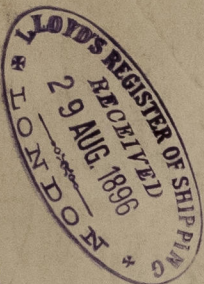
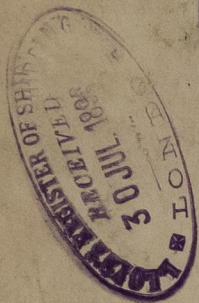
It is recommended that from the end of the hull (forward)

Plating edges of shell plating from the 1st to  
Upper Deck sheer stake to be double riveted throughout  
4 bands in way of oil compartment to have 1 inch  
in each row between each frame space.

Shell plating in way of 6th space & all oil  
compartments to Main Deck sheer stake to be fitted  
with double butt straps & double rivets. Forward  
4 ft. of oil compartment single butt straps & double rivets.

SLD 1012 0143





King's oil &

No. 555

"Inscarora"

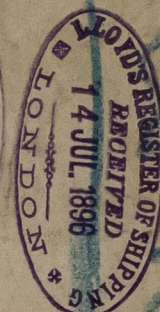
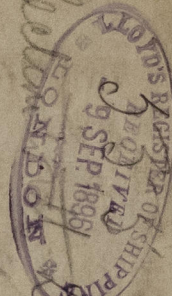
Cancelled 23/9/96

See new plans  
submitted.

Arrangements of Riving  
as app - 23/11/96 attached.

SLD/012 - 0143

Wm. & A. Lloyd's  
15/7/96



Oil 1000



© 2021

Lloyd's Register  
Foundation