

24/10/97

Washington pump 6.5 x 6.5 inch  
at aft end of tunnel drawing from  
after peak tank 1 suction 1/2 dia  
tunnel with 1 3/4

Effluent suction to steam pump in pump room  
suction pipe to No 1 & 2 effluents 6 dia  
suction pipe to No 3 & 4 6

Head pump  
One Houston pump 4 inch strong rubber  
suction hose, sufficient length to lead from aft  
to bottom of tanks, with discharging coupling to  
take further hose of service pipe

Suction pipes in engine room  
3 large suction  
2 centre suction in well (1 duct to donkey) 3/4 dia  
2 wing 3/4  
Engine ballast tank suction  
1 port centre suction 3/4 dia  
1 star 3/4

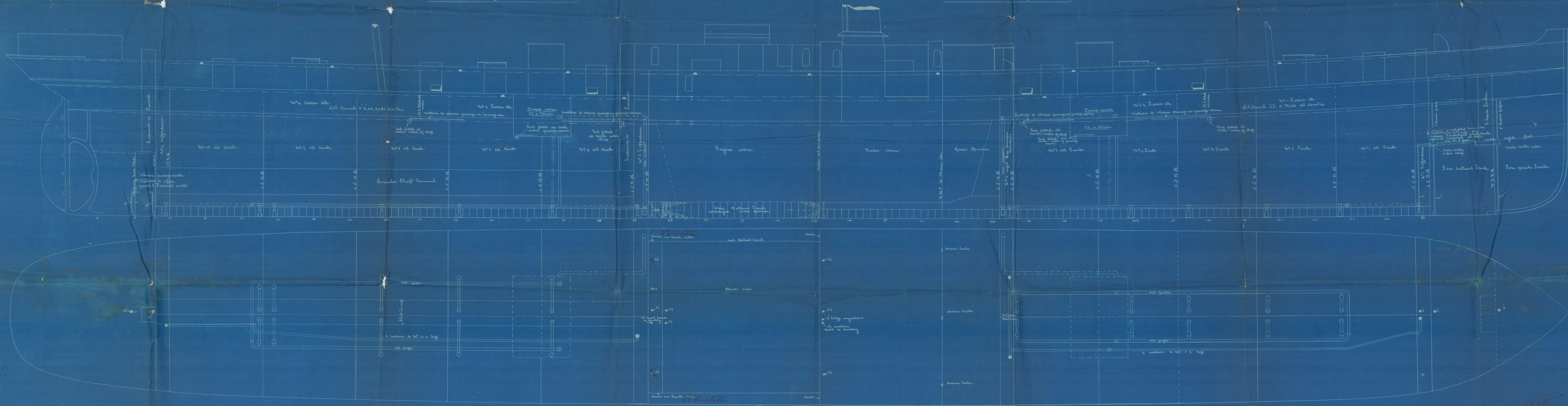
J. J. No 555  
Gate 1/2 foot  
Pump room door

3 suction pipes in boiler room  
2 centre suction (1 duct to donkey) 3/4 dia  
2 wing 3/4  
1 large suction 3/4

2 1/2 inch pumps  
1 Washington pump 14 x 14 x 12 3/4  
8 x 8 1/2 x 10 to be  
fixed in each pump room

Water to suction to steam pump in pump room  
No 1 suction deck 1 port suction 3/4 dia  
No 2 1 port suction 3/4 dia  
No 3 1 port suction 3/4 dia  
No 4 1 port suction 3/4 dia

1 new pump 7.5 x 8 fixed on top of  
fore ballast tank drawing from  
No 1 effluent 1 suction 5 dia  
fore ballast tank 1 5  
fore peak tank 1 5



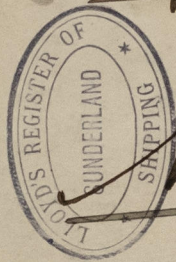
15th  
4/10/97

James Long  
Weyford Sands  
Sunderland

SLD/012-158



Sir James Loring.

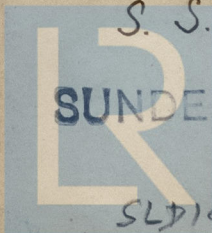


No. 555

Pumping  
arrangements.

S. S. "TUSCARORA"  
SUNDERLAND, N<sup>o</sup> 19342

SLD101200158



© 2021

Lloyd's Register  
Foundation





8510-2101475



© 2021

Lloyd's Register  
Foundation