

12.10.82

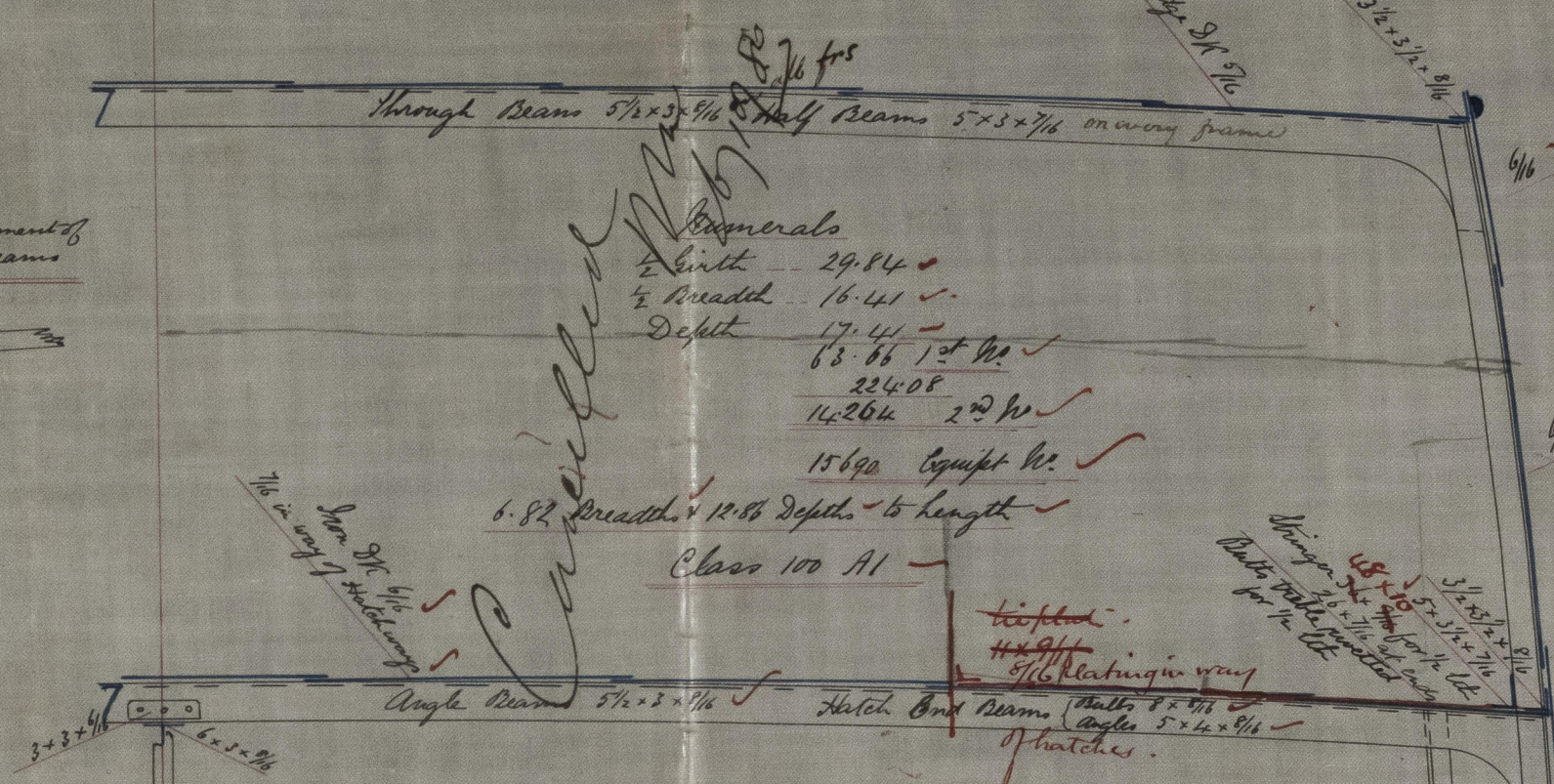
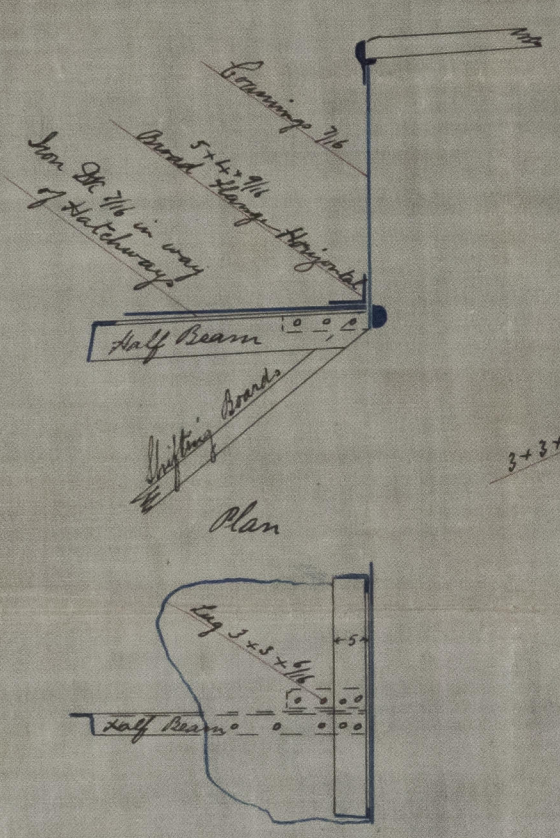
S. P. AUSTIN & CO.
29 Sept 1880
IRON & STEEL SHIPBUILDERS
REPAIRERS
SUNDERLAND

S.S. No 133
Scale $\frac{1}{2}$ " = 1 Foot

226 x 0 x 38.0 x 17.5 to top of Keel

Cancelled

Sketch showing arrangement of
Hatch Crainings & Half Beams



Materials
 $\frac{1}{2}$ length 29.84 ✓
 $\frac{1}{2}$ breadth 16.41 ✓
Depth 17.41 ✓
63.86 1st No ✓
224.08 ✓
14.26 2nd No ✓
15690 Equipt No ✓
6.82 breadth x 12.88 Depth to length ✓
Class 100 A1 ✓

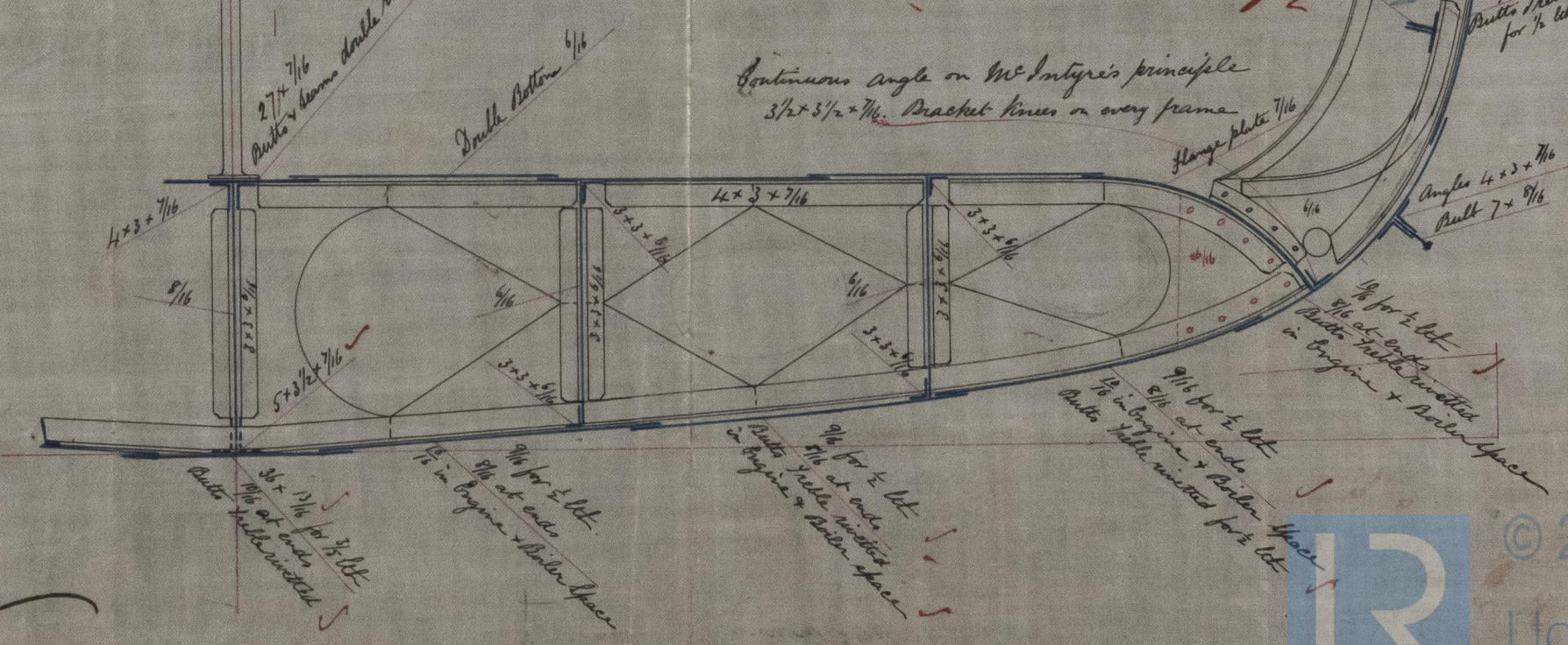
Outfit.

| | | |
|-------------------------|--------------|-------------------------------------|
| 2 Power Anchors | 6x 12x 12 | 21 cuts ✓ |
| 1 Stream | " " " | 18 " ✓ |
| 1 Ridge | " " " | 7 1/4 " ✓ |
| 1 | " " " | 3 1/2 " ✓ |
| 1 | " " " | 1 1/4 " ✓ |
| 240 Fathoms Chain Cable | | 1 1/2 " ✓ |
| 75 " | Stream chain | 1 1/2 " ✓ |
| 90 " | Low line | 10 " ✓ |
| 90 " | Steel shaver | 2 1/2 " } Dixon Corbett & Spencer ✓ |
| 90 " | " " | 1 1/4 " } Crucible Steel ✓ |

Frames 4 x 3 x 7/16 for 1/2 lb, 4 x 3 x 7/16 at ends, spaced 23 ins. ✓
Keel " 3 x 3 x 7/16 to main & lower stringer alternately single bar in engine & boiler space ✓
Boiler space 5 x 3 x 7/16 with 3 x 3 x 7/16 lugs to connect engine seating ✓
Stem post 7 1/4 x 4 x 3/4 stem 7 1/4 x 2 3/8 ✓
Rudder 5 1/4 x 4 x 3 ✓
Bulkheads 4 1/2 x 5 1/8 ✓

Solid Floor 1/16 spaced every 9th frame.
Bracket " 5/16
Floors & brids to thicken in engine & boiler space
Extra brackets for boiler seating as required.

Continuous angle on McIntyre's principle
3 1/2 x 3 1/2 x 7/16. Bracket lines on every frame



18th
11/10/82