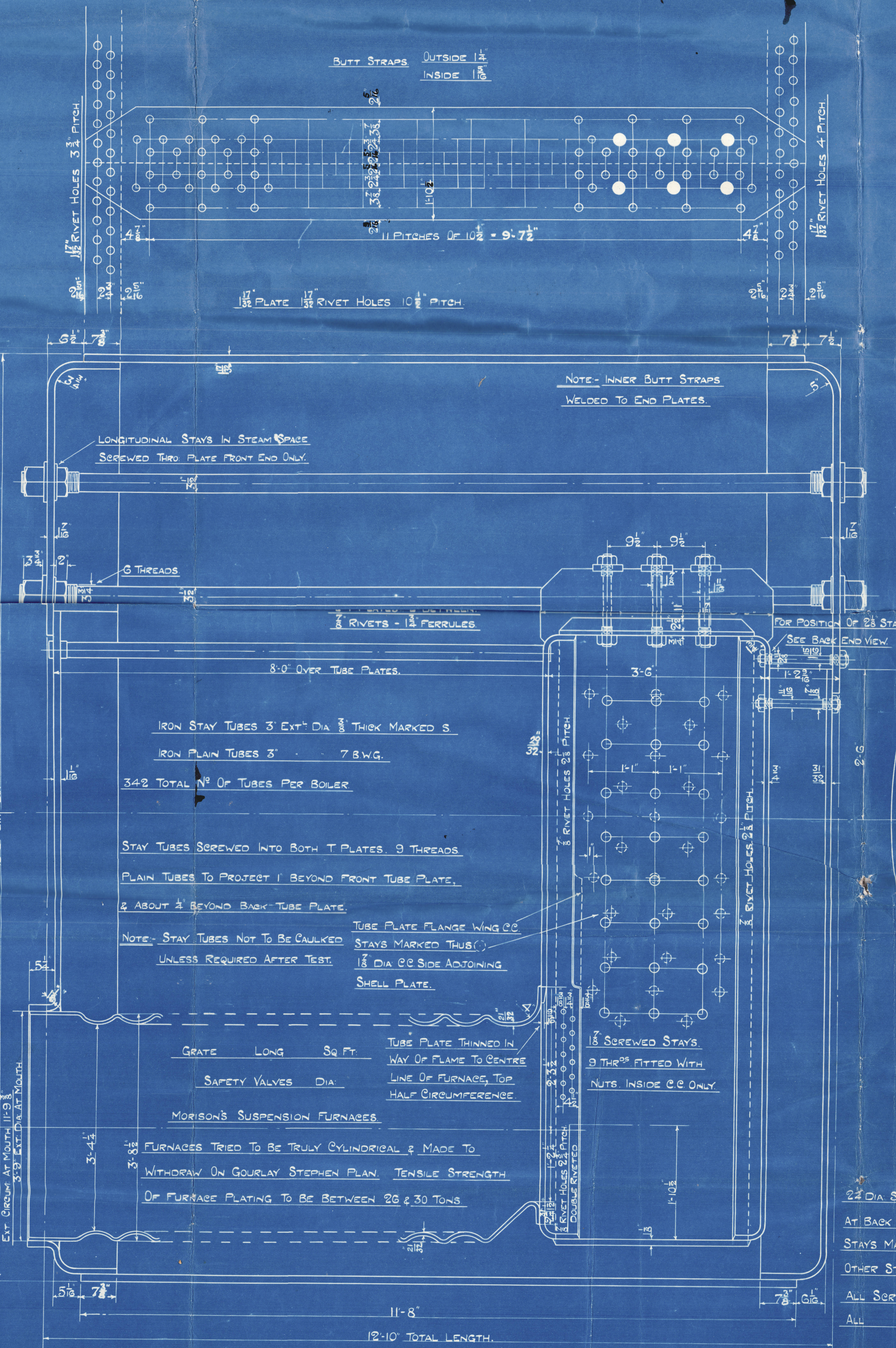
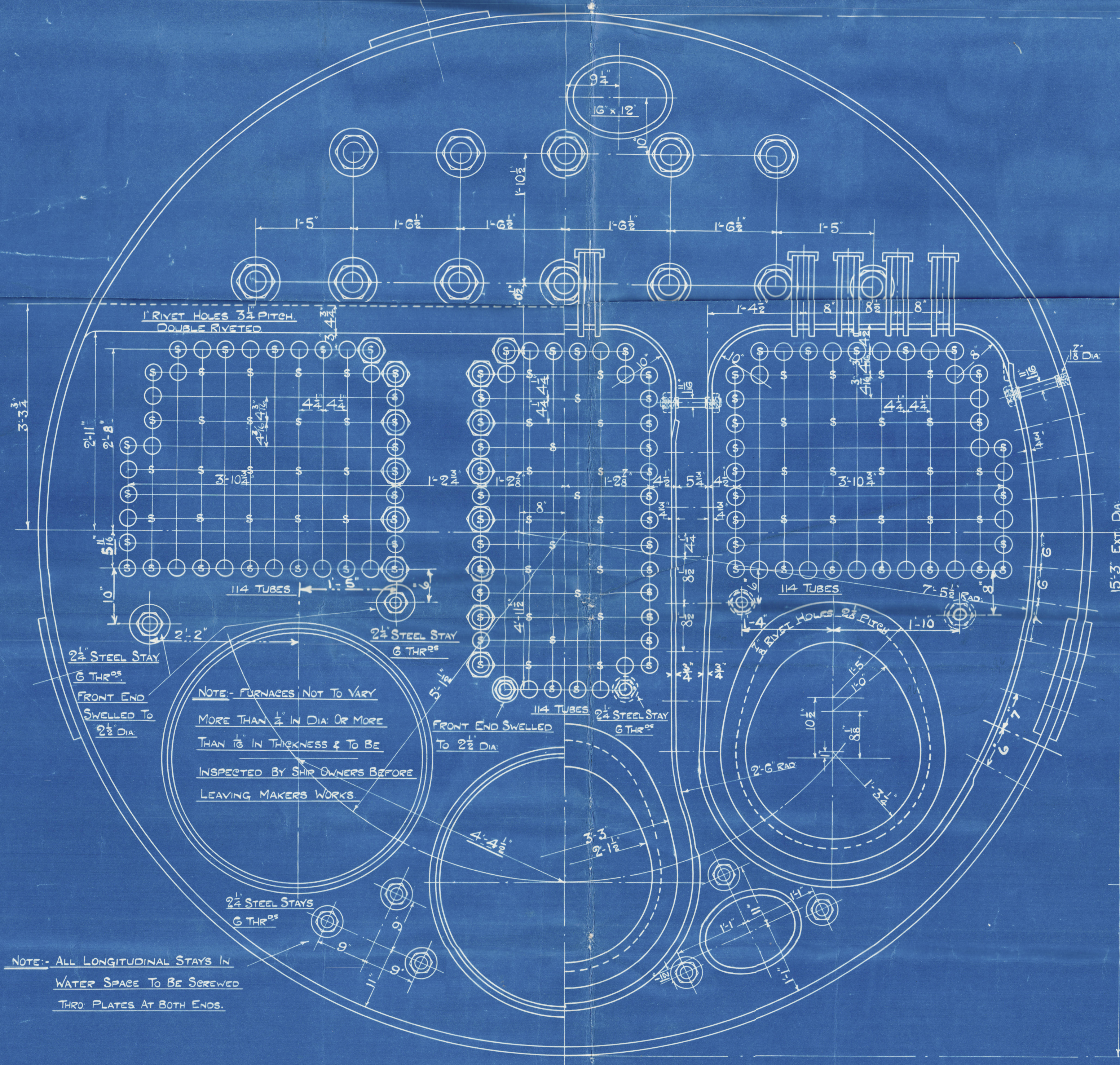


	B.O.T.	LLOYDS
PERCENTAGE STRENGTH OF PLATE	85.41	85.41
	RIVETS 38.16	85.18
BOARD OF TRADE	28 x (29.2) x 85.41 = 223.1 LBS Q'	
LLOYDS	22 x (24.5.2) x 85.18 = 234 " "	



TO BOARD OF TRADE & LLOYDS REQUIREMENTS

HEATING SURFACE TUBES 2149 $\frac{1}{2}$ PER BOILER

ELSEWHERE 471

TOTAL H.S. EXCLUDING FRONT TUBE PLATE 2620

WORKING PRESSURE 220 LBS PER Q'

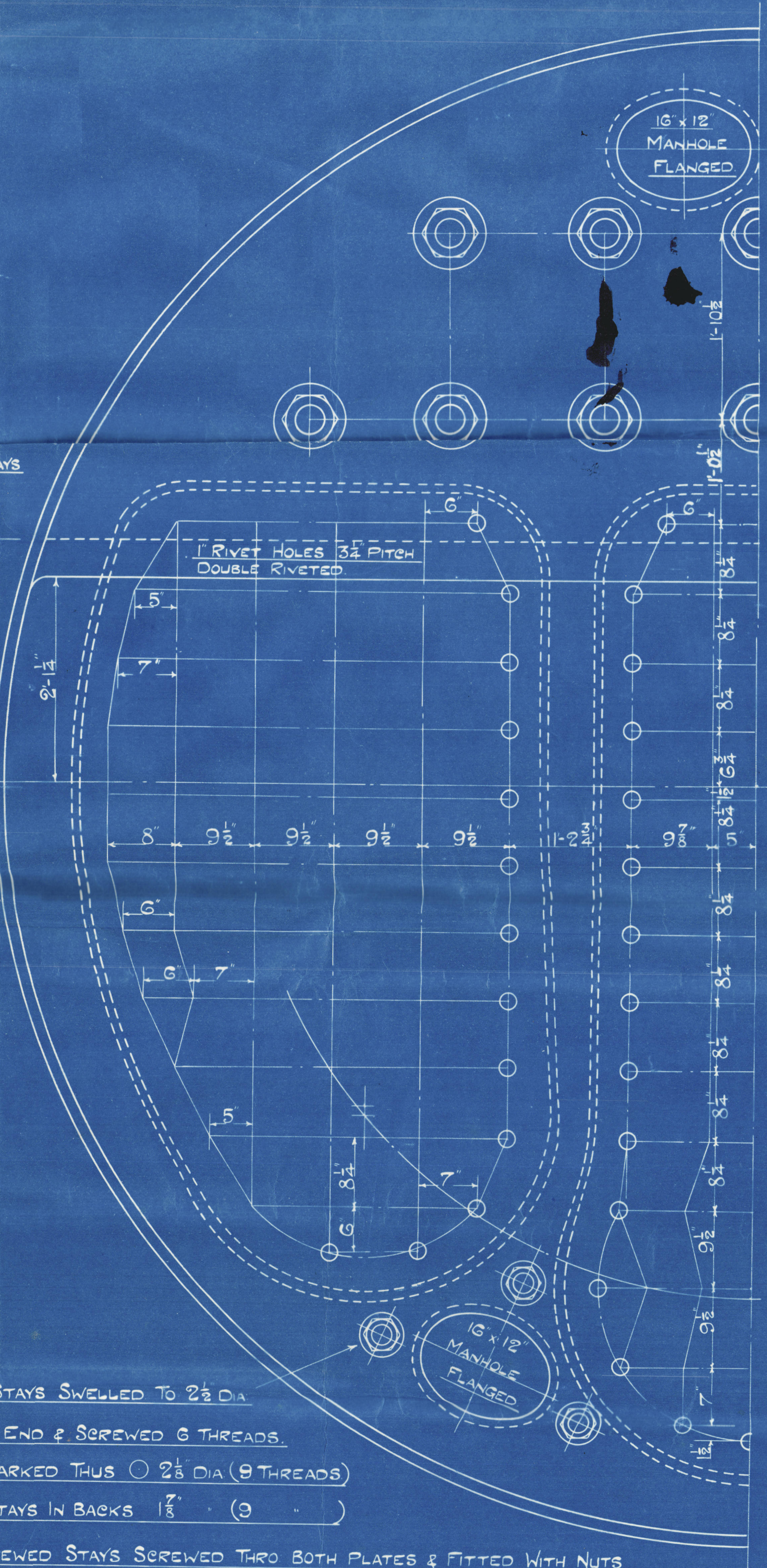
TEST 335

ALL PLATES, STAYS & RIVETS, STEEL

SMOKE TUBES WROG IRON

TENSILE STRENGTH OF SHELL 28 TO 32 TONS

ALL HOLES DRILLED IN PLACE AFTER PLATES ARE BENT



N. E. Marine by Co 2450 + 2470
amended plan of Main Boilers
220 lbs

No 2450 = S.S. Sandown Castle

2450
No 2470
12/5/20

2450
No 9520
LLOYDS TEST
265 lbs
WP = 220 lbs
21-1-20 CNS

S. S. SANDOWN CASTLE
NEWCASTLE ON TYNE.



Report No. 44451

LLOYD'S COPY
REGISTERED

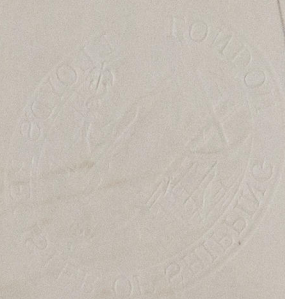


© 2020

Lloyd's Register
Foundation

W1019-0056

Handwritten signature



© 2020

Lloyd's Register
Foundation

Ac Cms



© 2020

Lloyd's Register
Foundation

Alber [2458/70



© 2020

Lloyd's Register
Foundation