

BUREAU OF COMMERCE

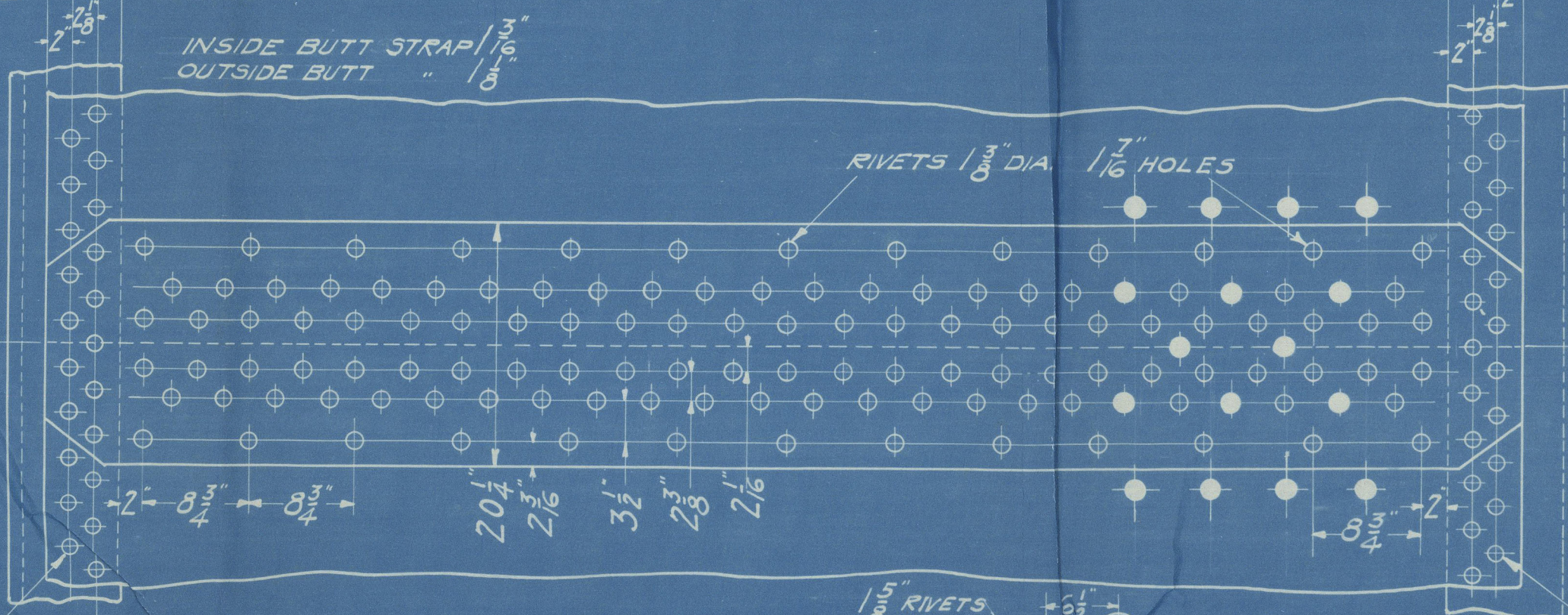
$$\text{PLATE \%} = \frac{8.75 - 14.375}{8.75} \times 100 = 83.5\%$$

$$\text{RIVET \%} = \frac{5 \times 1623 \times 1.75 \times 8.5}{8.75 \times 1.3125} \times 100 = 105\%$$

LLOYDS RULE

$$\text{PLATE \%} = \frac{8.75 - 14.375}{8.75} \times 100 = 83.5\%$$

$$\text{RIVET \%} = \frac{5 \times 1484 \times 8.5 \times 1.75}{8.75 \times 1.3125} = 96.1\%$$



REGISTERED RULES				ALTERATIONS	DATE	APP'D
LLOYD'S RULES						
SHELL	1/16	P. 63000X11/16 20% 199"	P. 220X11/16 20% 208"	BOILER DATA	ONE BOILER	
FURNACE	1/16	P. 15600X11/16 20% 199"	P. 15600X11/16 20% 199"	TUBES	HEATING SURFACE	1838"
TOP HEAD PLATE	1/16	P. 175X11/16 267"	P. 175X11/16 267"	FURNACES		136"
TOP HEAD STAYS	28	S. 195X17X1 6.49 = 8683"	P. 10200X6.49 = 233"	COMB CHAMB.		194.8"
TUBE PLATE	3/16	P. 175X11/16 267"	P. 175X11/16 267"	BACK TUBE PLATE		392"
CROWN PLATE	1/16	P. 135X11/16 216"	P. 135X11/16 216"	TOTAL		2208"
CROWN STAYS	1/16	S. 115X17X1 1.691 = 5395"	P. 6000X1.691 = 216"	GRATE SURFACE		5166"
C.C. WRAPPER PLATE	1/16	P. 135X11/16 216"	P. 135X11/16 216"	H/S		42.7
C.C. WRAPPER STAYS	1/16	S. 115X17X1 1.691 = 5395"	P. 6000X1.691 = 216"	CALORIMETER		10.52"
C.C. BACK PLATE	1/16	P. 135X11/16 216"	P. 135X11/16 216"	95/CAL.		4.91
C.C. BACK STAYS	1/16	S. 115X17X1 1.691 = 5395"	P. 6000X1.691 = 216"			
CROWN GIRDERS	1/16	P. 11850X11/16 216"	P. 11850X11/16 216"			
WIDE WATER SURFACE FROM HEAD	1/16	P. 140X11/16 239"	P. 140X11/16 239"			

FOR CONT. #184 SEE PMS 184-561-3-5-6-7-10-12-13-14-15-20-21-22-23-24-25.

TENSILE STRENGTH OF SHELL PLATES & GIRDERS 63000 TO 71680 LBS.

FLANGE " 58240 TO 67200 LBS.

WORKING PRESSURE 195 LBS. PER SQ. INCH.

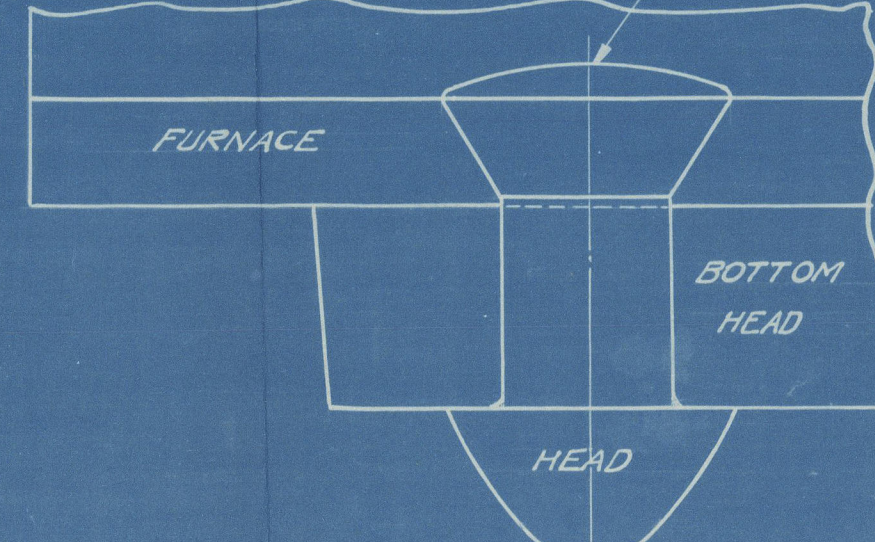
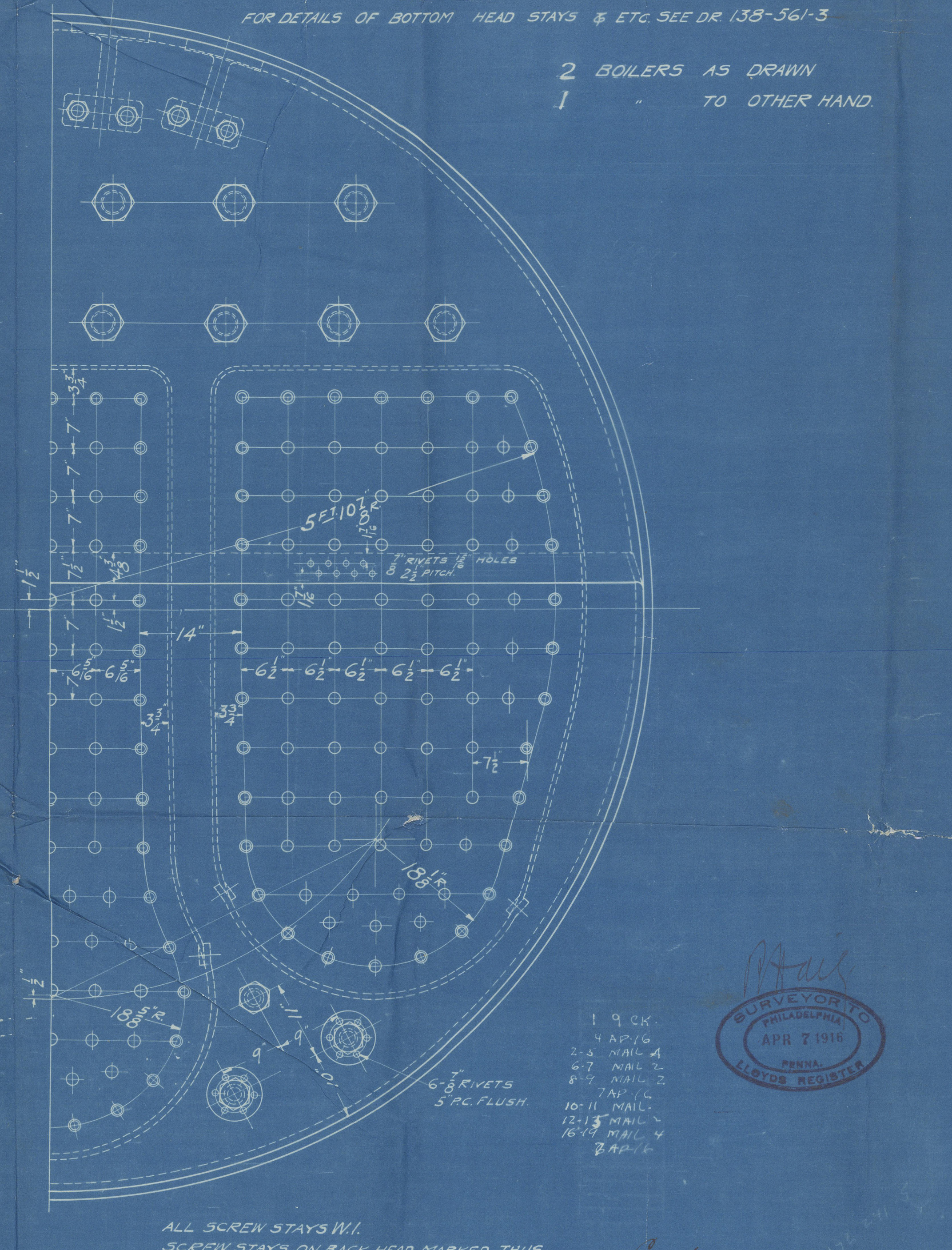
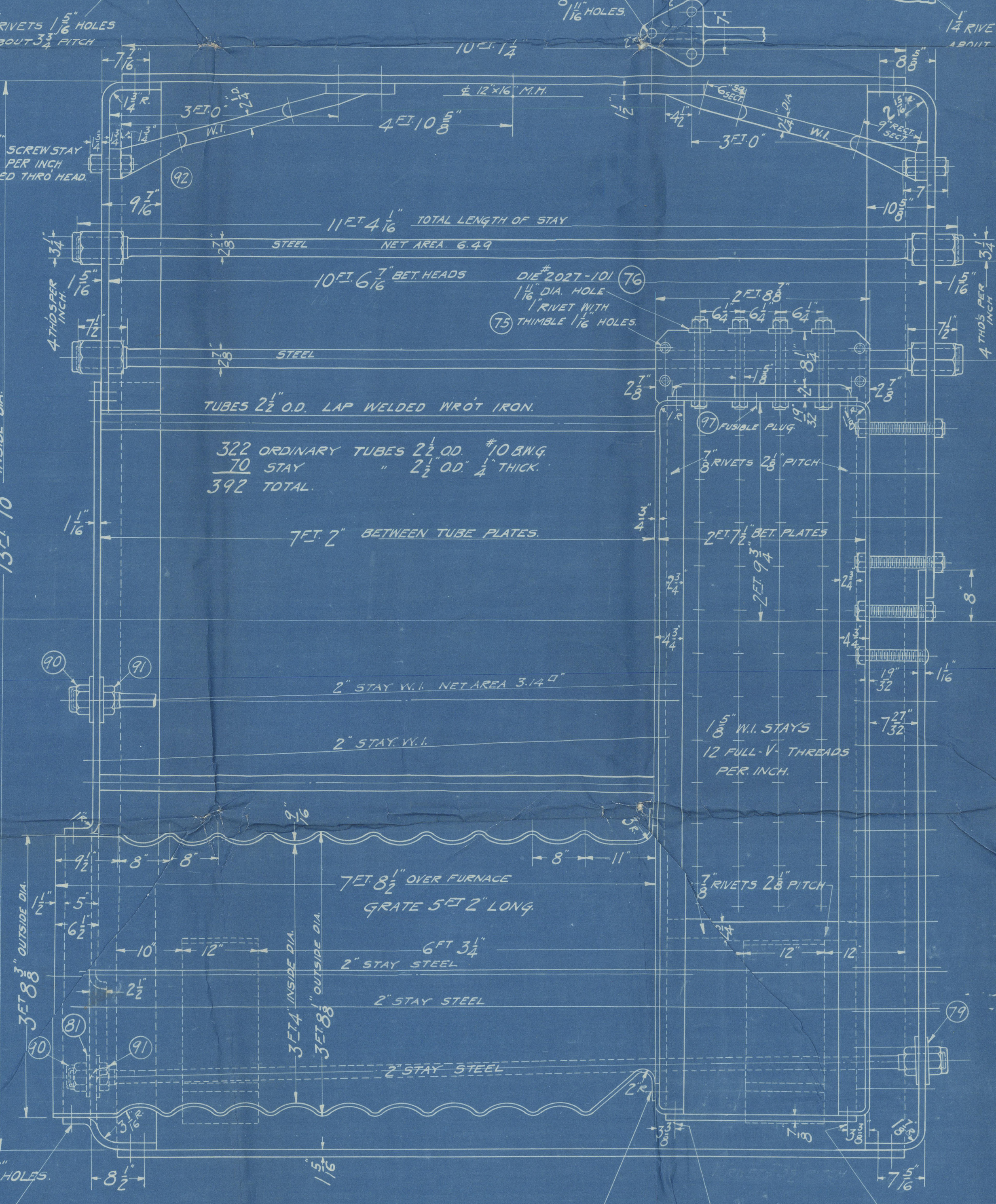
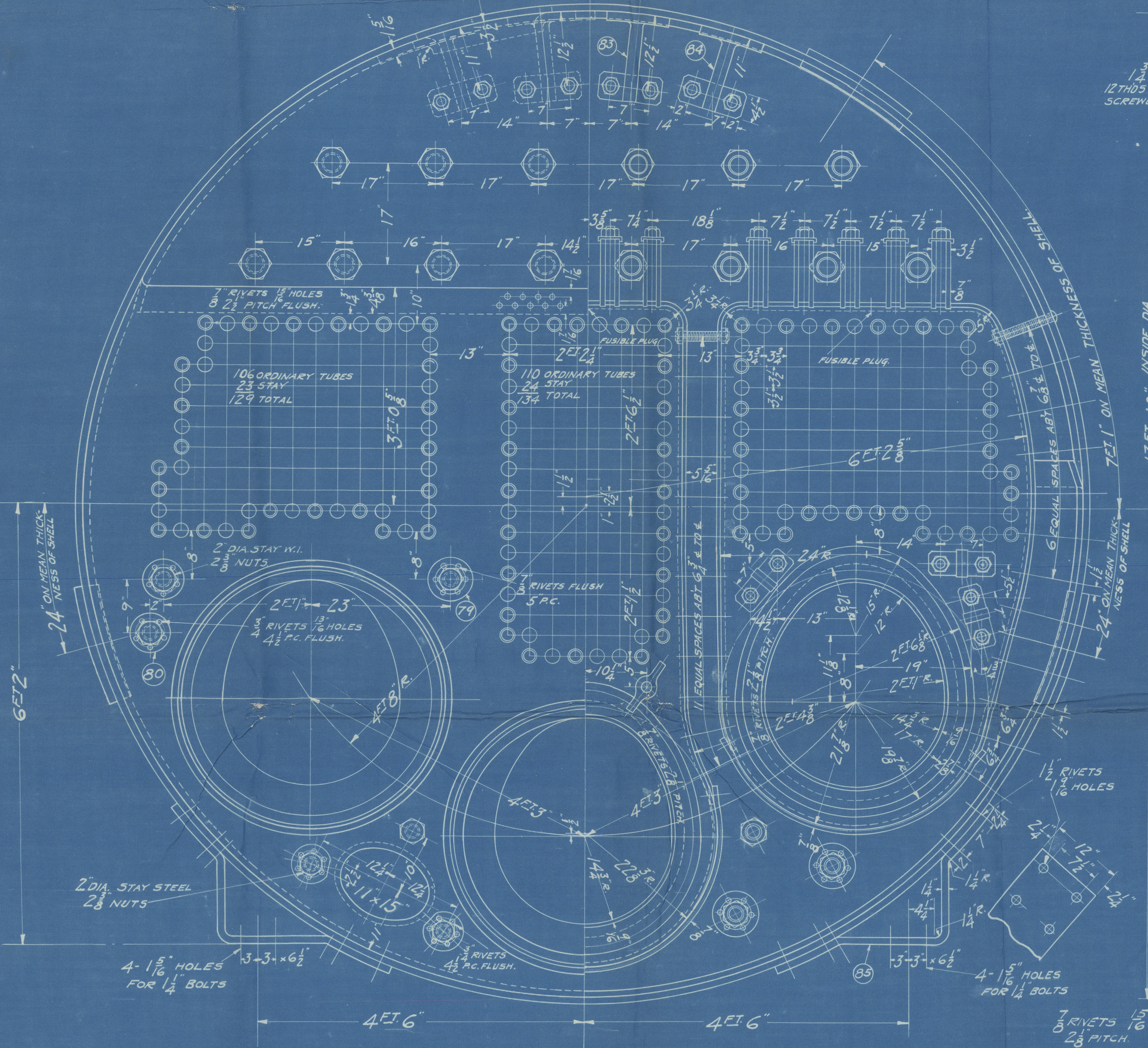
WATER TEST " 2925 " "

EVAPORATION 270 LBS. OF WATER PER SQ. FT. OF GRATE PER HOUR.

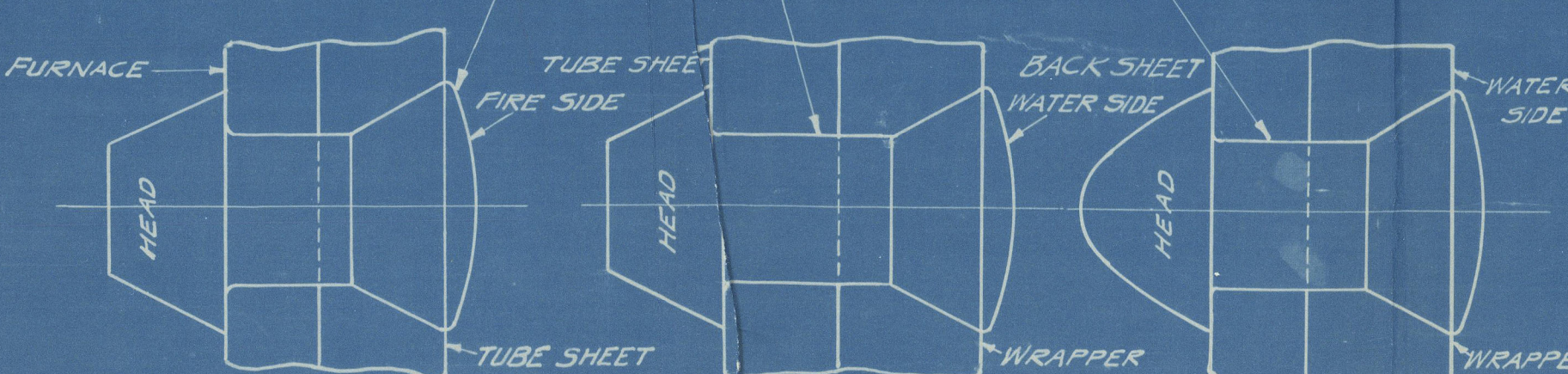
THIN SAFETY VALVE, COMBINED AREA 14-12"

FOR DETAILS OF BOTTOM HEAD STAYS & ETC SEE DR 138-561-3

2 BOILERS AS DRAWN  
1 " TO OTHER HAND.



ALL CALKING EDGES OF BOILER PLATE TO BE MACHINE PLANED SEAMS, BUTTS AND LAPS TO FIT CLOSELY DRAWN UP METAL AND AFTER BEING RIVETED CALKED INSIDE & OUTSIDE.



ALL SCREW STAYS W/.

SCREW STAYS ON BACK HEAD MARKED THUS

1/8" DIA. NUTS 1/4" DEEP IN C.C. & BACK HEAD

NET AREA = 2.32"

SCREW STAYS ON BACK HEAD MARKED THUS

1/8" DIA. NUTS 1/4" DEEP IN C.C. NO NUTS ON BACK HEAD. NET AREA = 1.694"

WRAPPER SCREW STAYS 1/8" DIA. NUTS 1/4" DEEP

GIRDER SCREW STAYS 1/8" DIA. NUTS 1/8" DEEP

ALL SCREW STAYS HAVE 1/2 FULL V THREADS PER INCH

ALL SCREW STAYS TO HAVE 1/2 HOLES DRILLED 1/2 BEYOND INNER SURFACE OF PLATE.

Contract # 184

ENGINE DEPARTMENT.

TITLE S.E. SCOTCH BOILER

13' 10" INSIDE DIA. X 10' 6 1/8" BET HEADS

195 LBS. WORKING PRESS.

SCALE 1" = 1 FT. DRAWING DATE

TRACED BY 253 CHECKED BY 221 CHIEF DRAFTER

NEW YORK SHIPBUILDING COMPANY,

CAMDEN, N.J. JERSEY U.S.A.

132-561-1

APPROVED



NEW YORK SHIPBUILDING CO.  
CAMDEN, N. J., U. S. A.  
BLUE PRINT ROOM

Print No. 17

Made APR 7 1916

For Dep't MAIL



© 2020

Lloyd's Register  
Foundation

W1029-0107



NEW YORK SHIPBUILDING CO.

CONTRACT 184

3 MAIN BOILERS

W.P. 195 lbs.

RETAIN

Philadelphia

N<sup>o</sup> 151

LLYD'S TEST

292 lbs

24-10-17 A.T.T.

RETAIN



© 2020

Lloyd's Register  
Foundation

W1029-0107