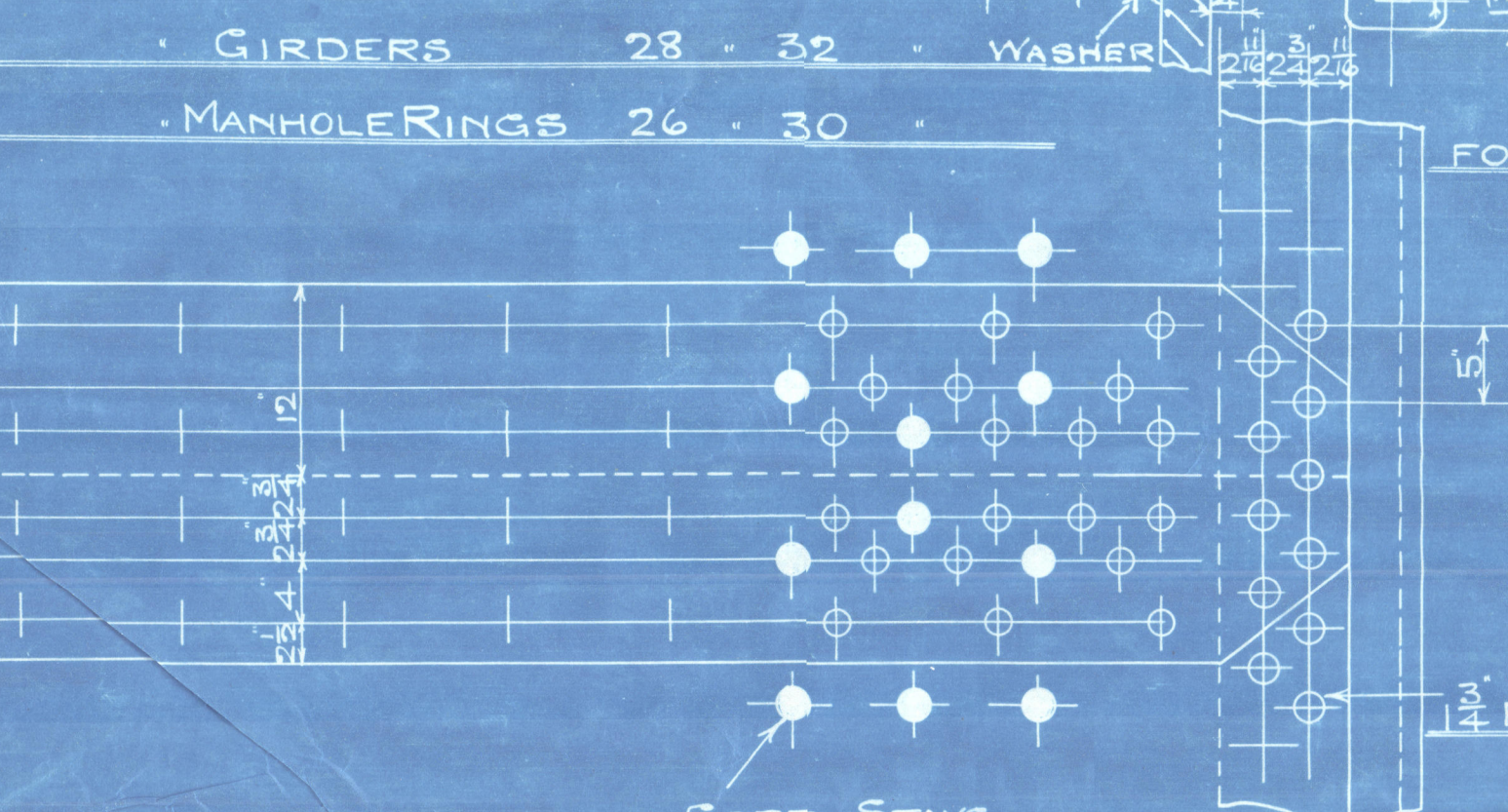


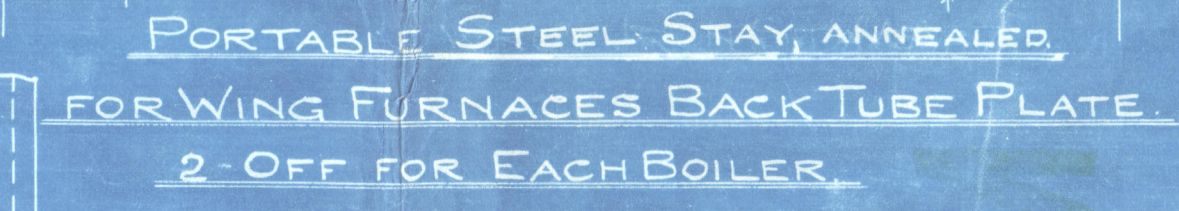
STEEL RIVETS FOR 12 BOILERS.			
POSITION		DIA.	LENGTH
CIRCUM. SEAM END TOP BACK		$\frac{11}{16}$	$\frac{5}{8}$
" " BOTTOM "		$\frac{11}{16}$	$\frac{5}{8}$
" HAND } RIVETED	" TOP FRONT	$\frac{11}{16}$	$\frac{7}{8}$
	" BOTTOM "	$\frac{11}{16}$	$\frac{4}{3}$
END OF TOP BUTT STRAPS		$\frac{11}{16}$	$\frac{7}{8}$
" " BOTTOM "		$\frac{11}{16}$	$\frac{7}{8}$
COMPENSATING SEAM		$\frac{11}{16}$	$\frac{5}{8}$
LONGITUDINAL SEAM		$\frac{9}{16}$	$\frac{7}{8}$
BOILER END BACK		$\frac{11}{16}$	$\frac{4}{3}$
" " FRONT (HAND RIVETED)		$\frac{11}{16}$	$\frac{7}{8}$
FURNACE MOUTH ()		$\frac{5}{8}$	$\frac{3}{8}$
" FURNACE BACK ()		$\frac{5}{8}$	$\frac{3}{8}$
COMB. CHAMBER BOTTOMS		$\frac{3}{8}$	$\frac{3}{8}$
" " SIDE AT BACK (BUTTS)		$\frac{3}{8}$	$\frac{3}{8}$
" " AT C.C. BACK PLATE		$\frac{3}{8}$	$\frac{3}{8}$

FOLLOWING RIVETS TAKEN FROM STOCK
 336 RIVETS FOR COMPENSATING RIV.
 700 " FOR CIRCUM. SEAM BOTTOM FROM
 2760 " " COMB. CHAMBER BOTTO
 1104 " " SIDES.

14 RIVET HOLES MINIMUM PITCH = 4"
17
132 COMPENSATING RING



• MANHOLE RINGS 26 • 30 "



○ $\frac{7}{8}$

SCREWED 9 THDS PER INCH.

© 2011
3-7-14
Lloyd's Register
Foundation

N923289

FOR ENCLOSURE TO

Lloyd's Register of Shipping

From

PALMERS S. & I. CO., Ltd.,

Engine Works Department,

JARROW-ON-TYNE.

(E.W.M.O. NO. 19.)

W1048-0109¹/₂

W1048-0109

Palmeo 843

Amended Plans of
Main Boilers 220 lbs

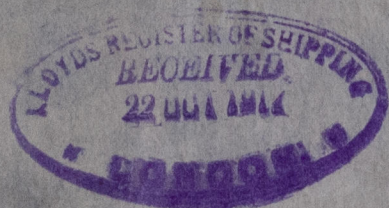
S S San Gennaro

n n Colombo

27

S S ~~SAN GENNARO~~
NEWCASTLE ON TYNE.

Report No. 70374



W1048-0109

RETAIN



© 2021

Lloyd's Register
Foundation