

INTERMEDIATE SHAFT AFTER

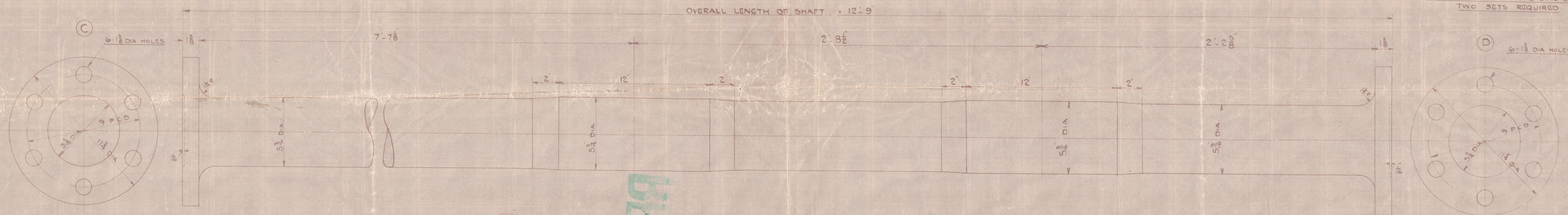
FLANGES

A	JOINS TAIL SHAFT
C	" FLANGE B
E	" " D
F	" CRANK SHAFT

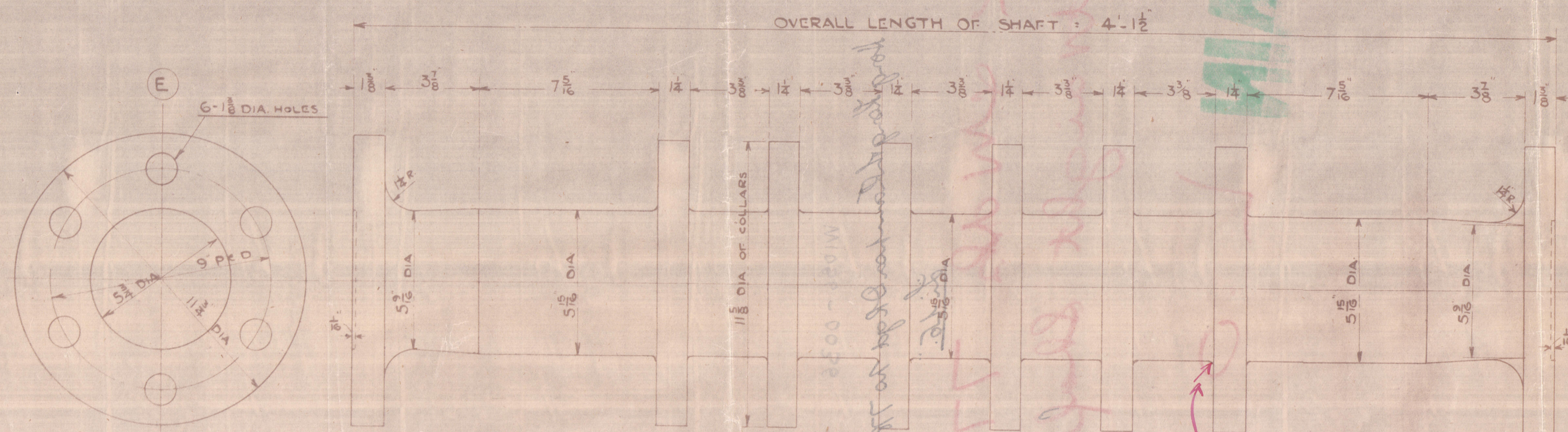
SHAFTS ETC.

INTERMEDIATE F	FORGED STEEL	1 OFF
" A	"	1 OFF
THRUST	"	1 OFF
COUPLING BOLTS G	"	12 OFF
" H	"	6 OFF

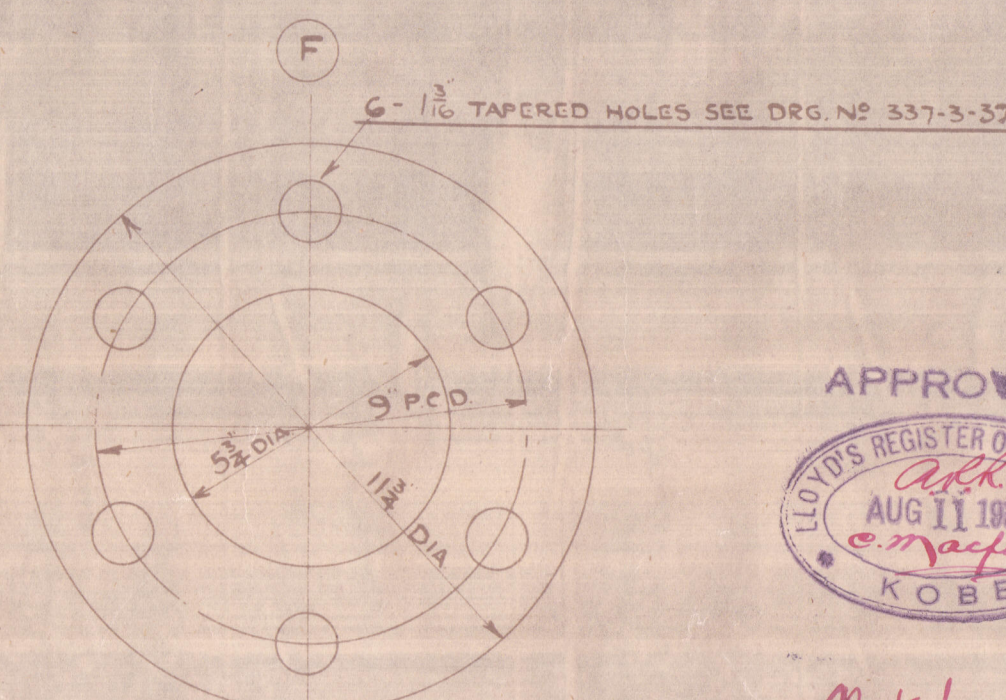
QUANTITIES FOR ONE ENGINE ONLY
TWO SETS REQUIRED



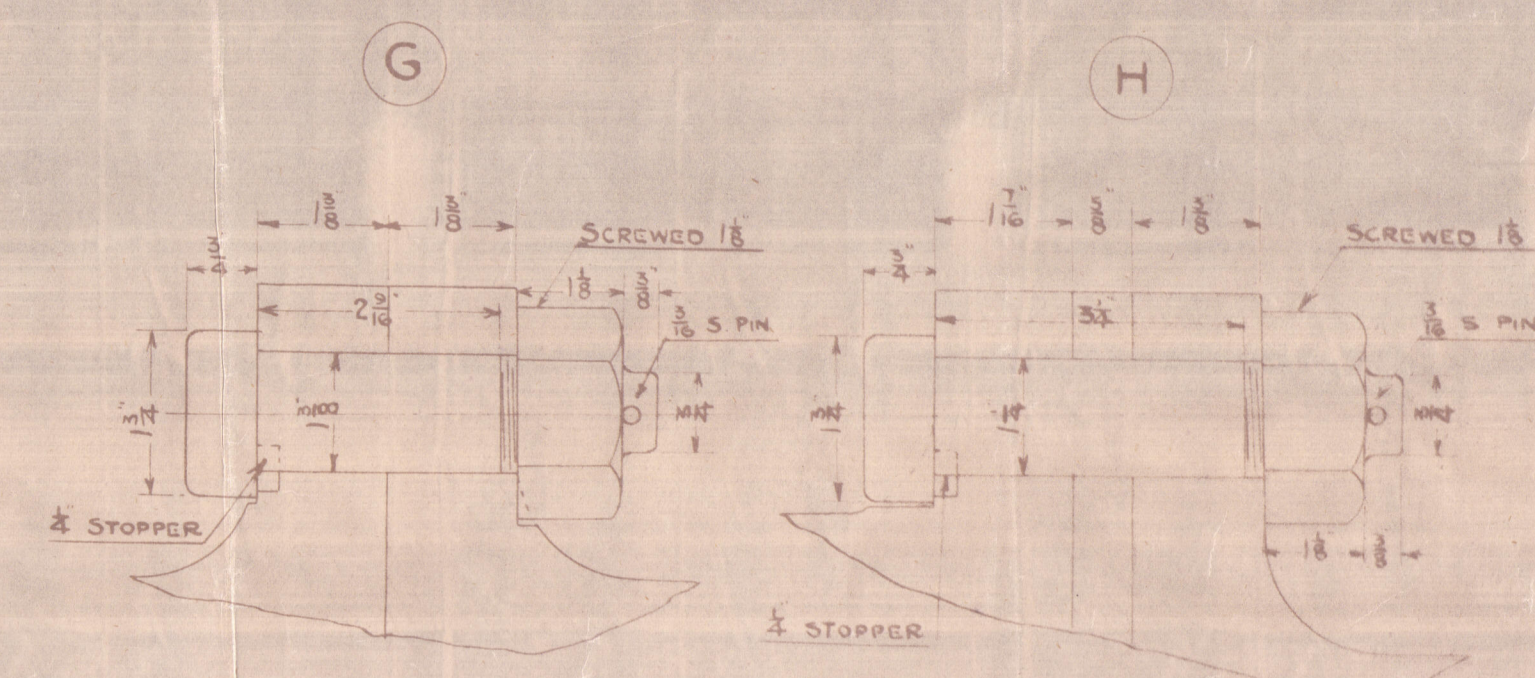
INTERMEDIATE SHAFT FORD



THRUST SHAFT



Noted 7/9/37
J.B.



DETAIL OF COUPLING BOLTS FOR FLANGES (B-C) (D-E)

DETAIL OF COUPLING BOLTS FOR FLANGE A

SHIP N° 778 ENG N° 500-1

INTERMEDIATE AND THRUST SHAFT

SCALE :- 3" = 1 FOOT

LLOYDS
H. K. & W. DOCK CO. LTD.
ENGINE DRAWING OFFICE
DATE 15 JULY 1937

W1056-0036

W1056-0036

Long Length Lampen Drgd No 778.

Li 15.

H.K. & W. Dr 778

Straight Shafting

RETAIN

L.O.

INTERMEDIATE



© 2020

Lloyd's Register
Foundation