



LONDON COPY.

THE NORTH EASTERN MARINE ENGINEERING CO (1938) LTD.

SUNDERLAND.

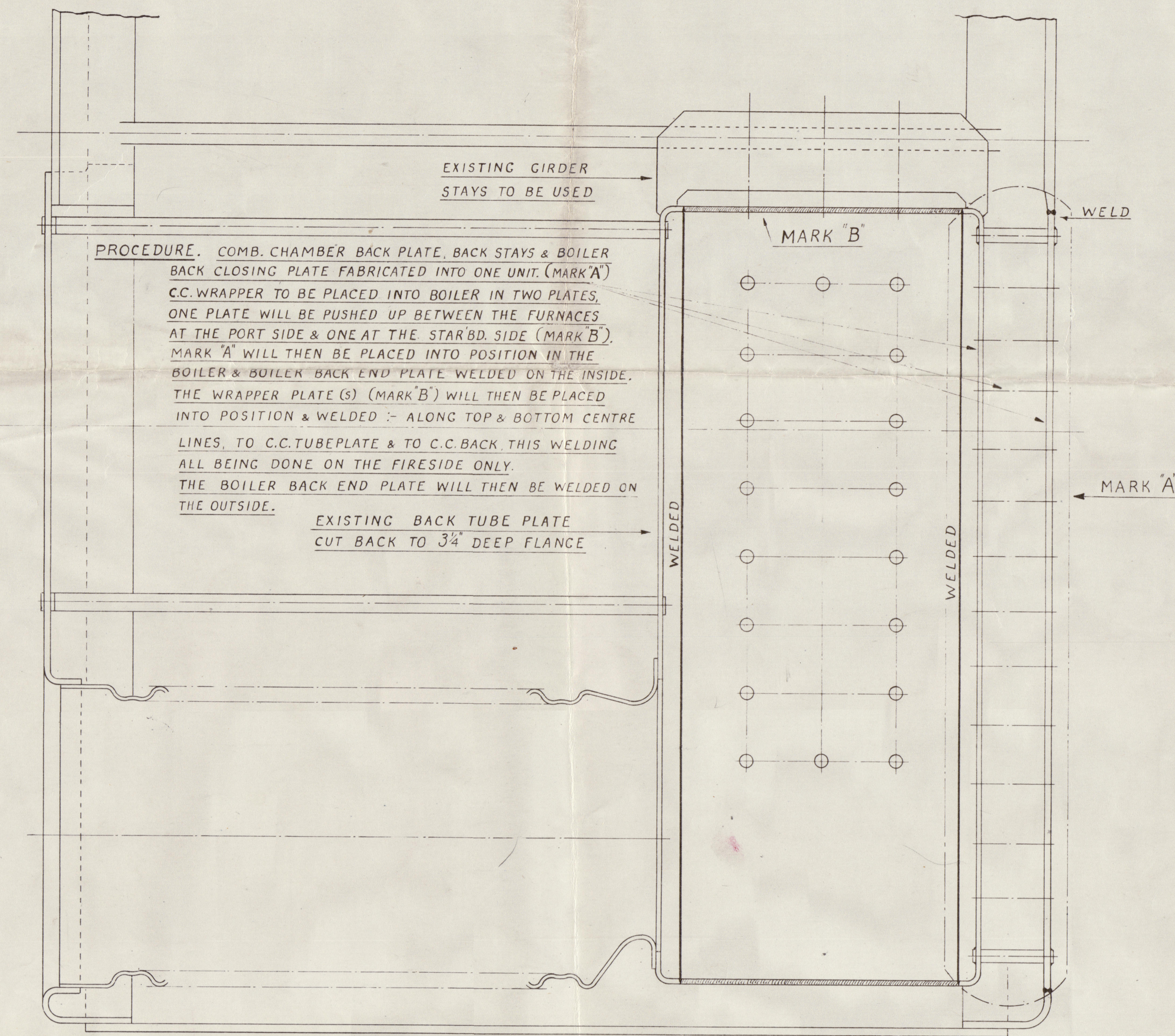
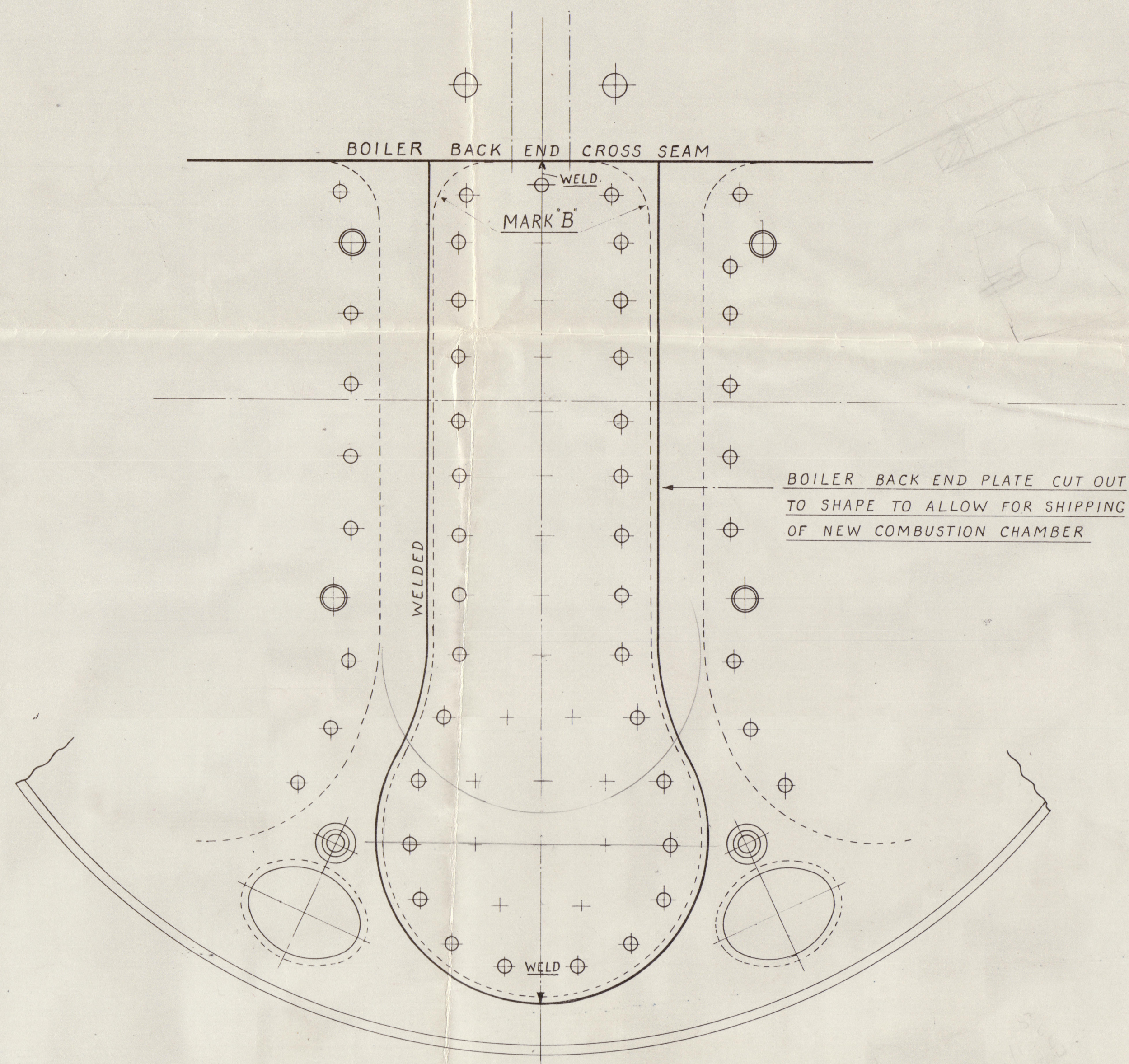
S.S. "MARTIN CARL". (C.4154.)

PROPOSED REPAIRS TO CENTRE COMBUSTION CHAMBER

OF PORT BOILER.

SCALE - 1" = ONE FOOT.

LONDON COPY.



PROCEDURE. COMB. CHAMBER BACK PLATE, BACK STAYS & BOILER BACK CLOSING PLATE FABRICATED INTO ONE UNIT. (MARK 'A') C.C. WRAPPER TO BE PLACED INTO BOILER IN TWO PLATES, ONE PLATE WILL BE PUSHED UP BETWEEN THE FURNACES AT THE PORT SIDE & ONE AT THE STARBD. SIDE (MARK 'B'). MARK 'A' WILL THEN BE PLACED INTO POSITION IN THE BOILER & BOILER BACK END PLATE WELDED ON THE INSIDE. THE WRAPPER PLATE(S) (MARK 'B') WILL THEN BE PLACED INTO POSITION & WELDED:- ALONG TOP & BOTTOM CENTRE LINES, TO C.C. TUBE PLATE & TO C.C. BACK, THIS WELDING ALL BEING DONE ON THE FIRESIDE ONLY. THE BOILER BACK END PLATE WILL THEN BE WELDED ON THE OUTSIDE.

EXISTING BACK TUBE PLATE CUT BACK TO 3/4\"/>

LONDON COPY.

SKETCH REF No 51/4154

SEE LETTER  
15-8-49

S.R. 479/49

LONDON COPY.  
Lloyd's Register Foundation  
W1073 - 0194



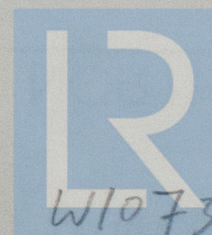
"Martin Carl"

Proposed repairs to center combustion  
chamber of port boiler

Rot. 34336.

LONDON COPY.

W1073-0194



© 2021

Lloyd's Register  
Foundation

W1073-0194



LONDON COPY!



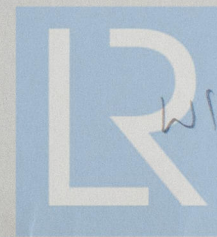
© 2021

Lloyd's Register  
Foundation



LONDON COPY.

LONDON COPY.



© 2021

W1073-0194

Lloyd's Register  
Foundation