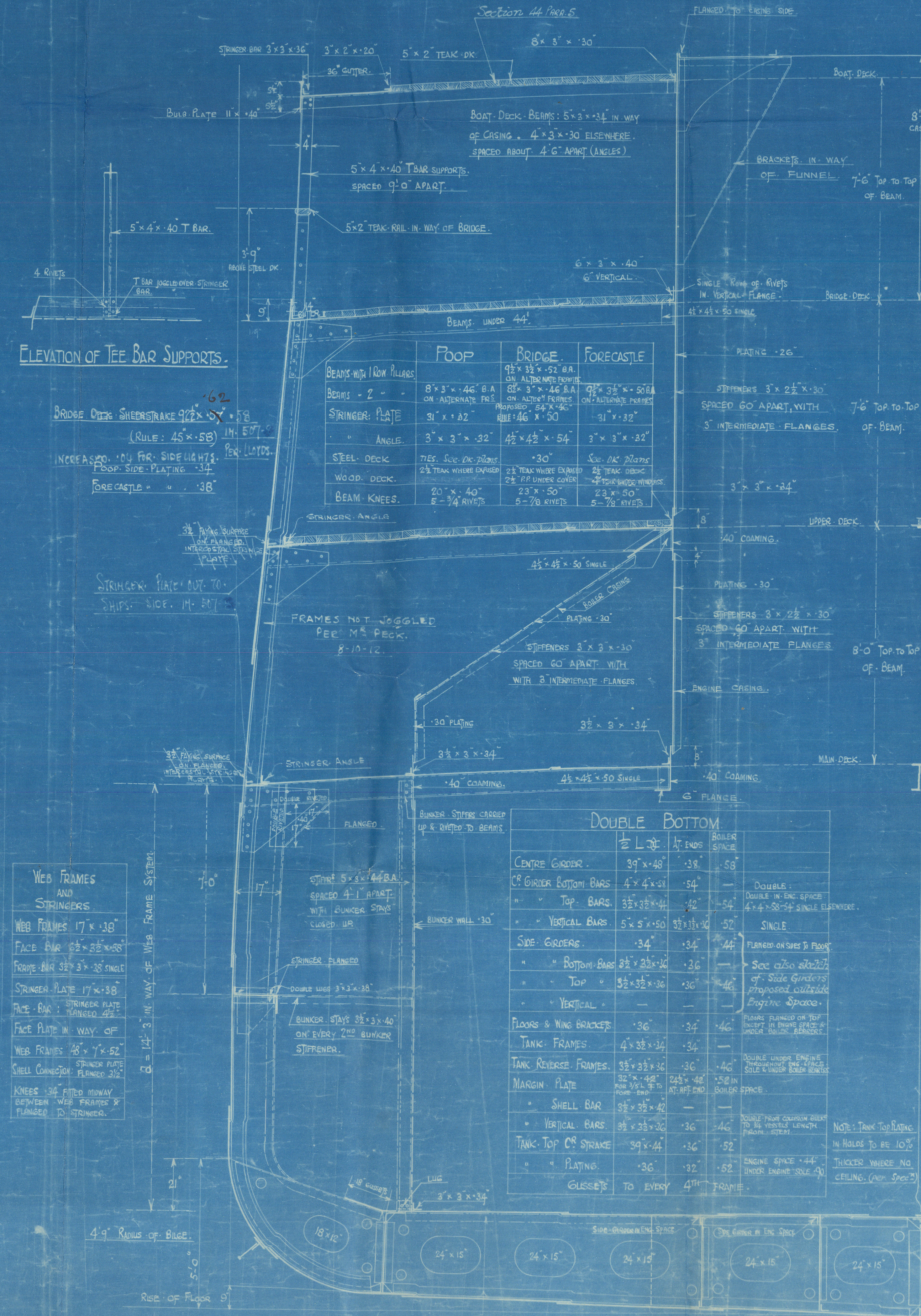


# MIDSHIP SECTION.

No. 495-507-22 S.S. BANDRA  
MOULDED DIMENSIONS: 329'-11" x 46'-0" x 25'-6".

Scale: 1/2" = One foot.  
To class 100 A1 LLOYDS.



ELEVATION OF TEE BAR SUPPORTS.

BRIDGE ORG. SHEERSTRACE 922 x 58  
(RULE: 45 x 58) 14. 507-5  
INCREASED .00 FOR SIDE LIGHTS PER LLOYDS.  
FORECASTLE " " .38

WEB FRAMES AND STRINGERS.  
WEB FRAMES 17 x 38  
FACE BAR 82 x 38 x 58  
FRONT BAR 32 x 38 SINGLE  
STRINGER PLATE 17 x 38  
FACE BAR: STRINGER PLATE WIDENED 42  
FACE PLATE IN WAY OF  
WEB FRAMES 46 x 7 x 52  
SHELL CONNECTION: STRINGER PLATE FLANGED 3/2  
KNEES 3/4 FITTED MIDWAY BETWEEN WEB FRAMES & FLANGED TO STRINGER.

DOUBLE BOTTOM	2 L <sub>2</sub>	AT ENDS	BOILER
CENTRE GIRDER	39 x 48	38	58
CF GIRDER BOTTOM BARS	4 x 4 x 58	54	
" " TOP BARS	35 x 35 x 42	42	54
" " VERTICAL BARS	5 x 5 x 50	32 x 32 x 36	52
SIDE GIRDERS	34	34	44
" " BOTTOM BARS	35 x 35 x 36	36	
" " TOP	35 x 35 x 36	36	46
" " VERTICAL			
FLOORS & WING BRACKETS	36	34	46
TANK FRAMES	4 x 38 x 34	34	
TANK REVERSE FRAMES	35 x 35 x 36	36	46
MARGIN PLATE	32 x 14	245 x 42	15.6 IN BOILER SPACE
" " SHELL BAR	35 x 35 x 42		
" " VERTICAL BARS	35 x 35 x 36	36	46
TANK TOP CF STRAKE	39 x 44	36	52
" " PLATING	36	32	52
GUSSETS TO EVERY 4TH FRAME			

LLOYDS NUMERALS.	EQUIPMENT NO.	EQUIPMENT.
1ST NO	71-5	L (B=0) 235 89
2ND NO	235 89	FORECASTLE 34 x 7.5 x 3 191
3 TO UPPER DECK	12-94	BRIDGE 110 x 7.5 x 3 619
5 TO BRIDGE DECK	9-99	ROOF 49.5 x 7.5 x 3 278
6	13-115	BOAT DECK 110 x 7.5 x 3 412
7 IN WAY OF WEB FRAME SYSTEM	14-3	HULLS 59 x 7.5 x 3 221
		CASINGS
		EQUIPMENT NO. 253 10

UPPER DECK.	MAIN DECK.
BEAMS WITH 1 ROW PILLARS	BEAMS WITH 1 ROW PILLARS
BEAMS WITH 2 ROW PILLARS	BEAMS WITH 2 ROW PILLARS
STRINGER PLATE	STRINGER PLATE
STRINGER ANGLE	STRINGER ANGLE
STEEL DECK	STEEL DECK
WOOD DECK	WOOD DECK
BEAM KNEES	BEAM KNEES

PILLARS.		
WHERE FITTED.	LENGTH.	1 ROW. ALONGSIDE OPENINGS 8" - 2" APART.
UPPER TO MAIN DECK	6' & UNDER 8'	2 3/4" 2 3/4"
TANK TOP TO MAIN DECK	14" * 14"	4 1/2" 4 7/8"
DOWN TO	14" * 16"	4 7/8" 4 1/2"
UPPER TO 14" & 16"	6' - 8'	2 7/8" —
UNDER 4" OVER TWO 7/8" OVER 5" OVER 4"	THREE	IS LENGTH (HOLD & HOLD)

FRAMING.  
FRAMES SPACED 24" APART IN FORE & AFT PEAKS; ELSEWHERE SPACED 24".  
IN WAY OF PEAKS AND TUNNEL RECESS FRAMES 52 x 32 x 34 ANGLES.  
REVERSE FRAMES 3 x 3 x 34 ANGLES, FORMING A 52 CHAMFER: REVERSE BARS ALL TO UPPER DECK IN AFTER PEAK; TO UPPER & MAIN DECKS ALTERNATELY IN WAY OF TUNNEL RECESS, AND TO MAIN AND FORECASTLE DECKS IN FORE PEAK.  
IN MACHINERY SPACE AND MAIN CROSS BUNKER: FRAMES 62 x 32 x 40 B.A. (WEB FRAME SYSTEM), ALTERNATELY TO BRIDGE AND UPPER DECKS WITH 4 x 32 x 24 INTERMEDIATE ANGLES (NOT SCARPHED) BETWEEN BRIDGE AND UPPER DECKS.  
REMAINDER OF FRAMING. 6 x 32 x 46 BULB ANGLES ALL TO UPPER DECK EXCEPT IN WAY OF POOP, FORECASTLE & AFT END OF BRIDGE WHERE ALTERNATE FRAMES EXTEND TO EITHER POOP, BRIDGE OR FORECASTLE WITH INTERMEDIATE FRAMES (NOT SCARPHED) OF ANGLES 4 x 32 x 34 IN WAY OF BRIDGE; 32 x 32 x 30 ANGLES IN WAY OF POOP; AND IN WAY OF FORECASTLE 4 x 32 x 34.

RIVETING.	END CONNECTIONS.	AT ENDS.
KEEL	QUADRUPLE RIVETED OVERLAP	TREBLE WHERE .76 & UNDER
SHEERSTRACE	QUADRUPLE RIVETED OVERLAP	TREBLE WHERE .68 & OVER .42
STRAKE BELOW SHEERSTRACE	TREBLE IN WAY OF BRIDGE	DOUBLE WHERE .42
BRIDGE DECK SHEERSTRACE	TREBLE RIVETED OVERLAP	TREBLE AT ENDS WHERE OVER .42
OUTSIDE PLATING FROM KEEL TO UPPER TURN OF BULB	QUADRUPLE RIVETED OVERLAP	DOUBLE WHERE .42
OUTSIDE PLATING FROM UPPER TURN OF BULB TO STRAKE BELOW SHEERSTRACE	"	"
BRIDGE DECK STRINGER	"	"
" " PLATING	"	"
UPPER DECK STRINGER	"	"
" " PLATING	"	"
MAIN DECK STRINGER	"	"
" " PLATING	"	"
CENTRE GIRDER	"	"
MARGIN PLATE	"	"
TANK TOP CS STRAKE	"	"
TANK TOP PLATING	"	"
POOP & FORE SIDE PLATING	"	"
" " STRINGERS	"	"
" " DECK PLATING	"	"
EDGE CONNECTIONS	"	"
SHEERSTRACE AND KEEL LAMINGS	"	"
COMBINERS OF OUTSIDE PLATING EDGES OVER (EXCEPT BULBING, POOP & FORE SIDE PLATING = SINGLE)	"	"
TANK TOP MIDDLE LINE STRAKE	"	"
ALL DECK EDGES INCLUDING STRINGERS	"	"
REMAINDER OF TANK TOP PLATING	"	"

STEM & STERN FRAMES  
STEM 70 x 28 x 28 ST. IRON  
STERNFRAME RUBBER BAST 82 x 62  
PROPOSED 9 1/2 x 62  
RUBBER STOCK AS PER FORMULA

SPACING  
6 x 2 WHITE PINE  
SPACED 6" APART

STRINGER OMITTED (EXCEPT IN MACHINERY SPACE & BUNKERS) & 14" TO BE RIVETED TO NOS. 7 & 8 STRAKES OF OUTSIDE PLATING

7 66 x 56 FOR 2 L<sub>1</sub> TO .42 AT ENDS

7 66 x 56 FOR 2 L<sub>1</sub> TO .42 AT ENDS

7 66 x 56 FOR 2 L<sub>1</sub> TO .42 AT ENDS

7 66 x 56 FOR 2 L<sub>1</sub> TO .42 AT ENDS

7 66 x 56 FOR 2 L<sub>1</sub> TO .42 AT ENDS

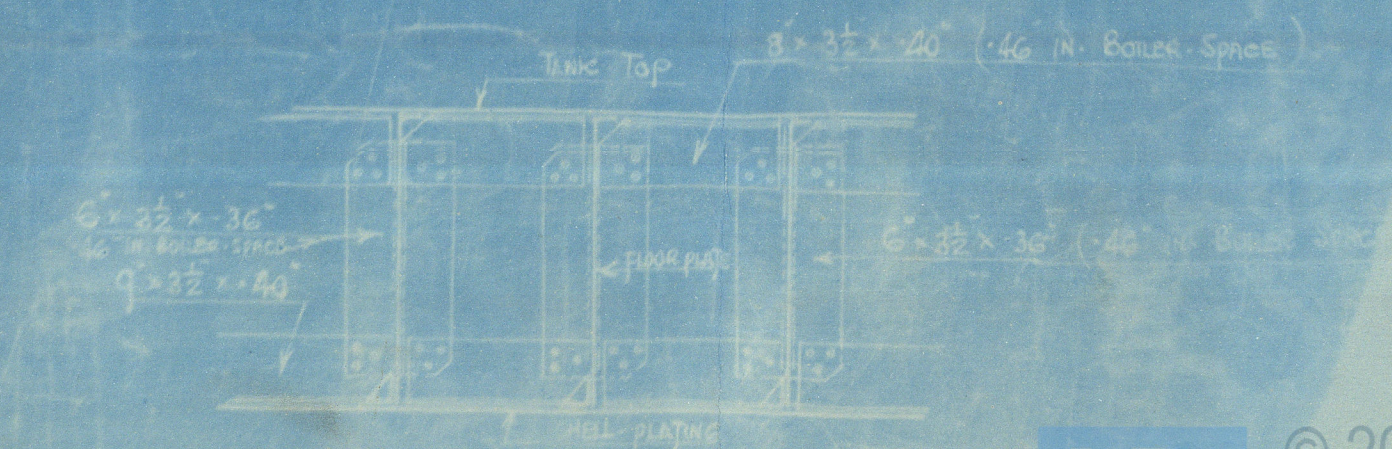
7 66 x 56 FOR 2 L<sub>1</sub> TO .42 AT ENDS

7 66 x 56 FOR 2 L<sub>1</sub> TO .42 AT ENDS

NOTE: THE PLATES CONNECTED TO STERNFRAME TO BE OF THE THICKNESS REQUIRED FOR THE SAME STRAKES AND SHIPS.  
BOSS PLATES WHERE FURNISHED TO BE .66" AND QUADRUPLE RIVETED.

TANK FRAMES & REVERSE FRAMES NOT JOGGLED  
1 1/2 IN. 507-5  
SEE LLOYDS FORM 141

1) KEEL PLATE 45 x 83 FOR 3/8 L<sub>2</sub> TO .62 AT ENDS.  
OR  
CF GIRDER BOTTOM BARS 5 x 5 x 68 WITH KEEL PLATE INCREASED .04  
STRAKES 2, 3 AND 4, WHERE ENTIRELY WITHIN DOUBLE BOTTOM ARE TO BE REDUCED .04 WHERE PLATING IS .34 AND ABOVE; AND .02 WHERE THE PLATING IS .52 IN THICKNESS.





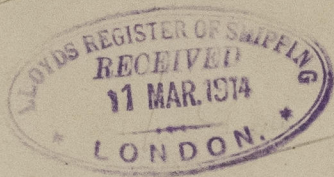
Barclay Curle & Co.

N<sup>o</sup> 507

Midship Section

s/s "Bandra"

GLASGOW REPORT No. 33713.



RETAIN

