

27 JUN 1950

W.D. SCHOT SPT. 18 & 20

DETAIL BOVENKANT ZUHOOFDPLATEN SCHAAAL 1:5

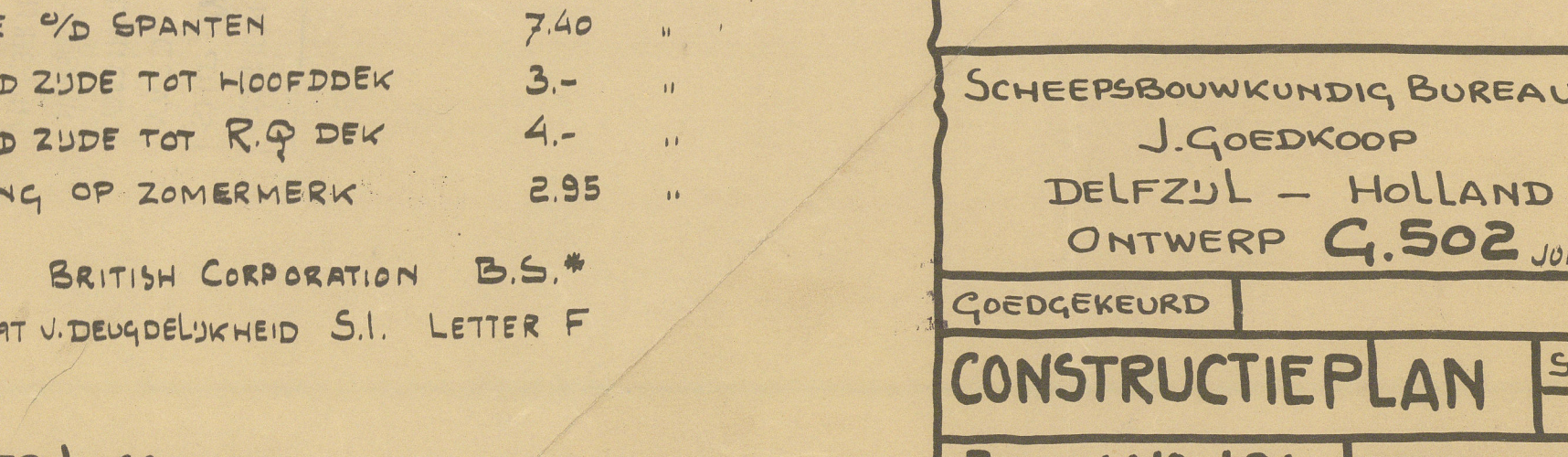
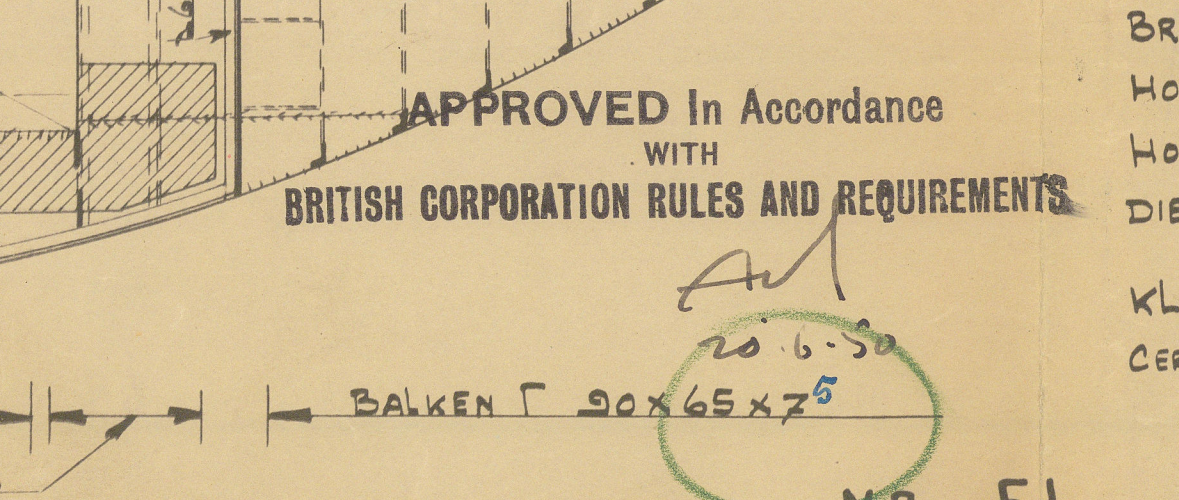
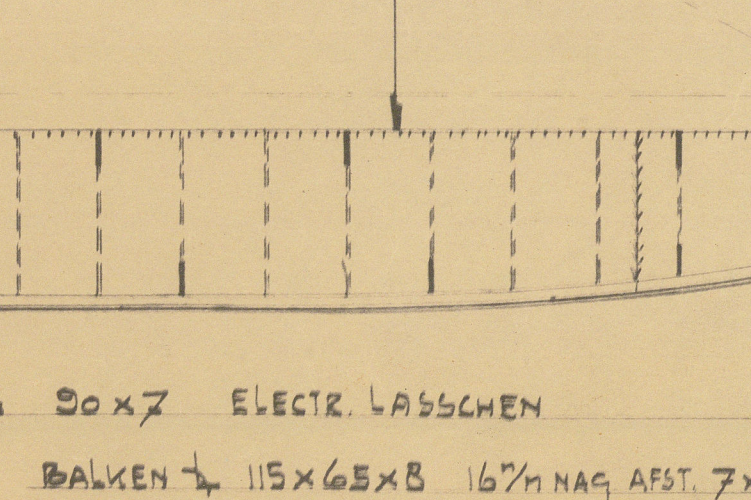
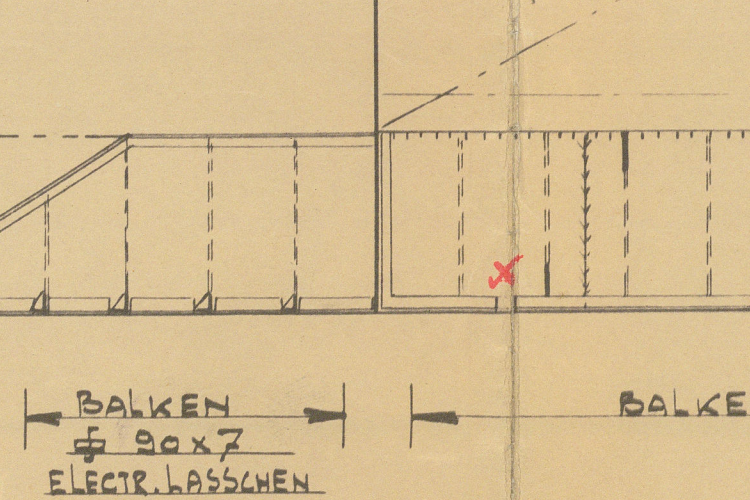
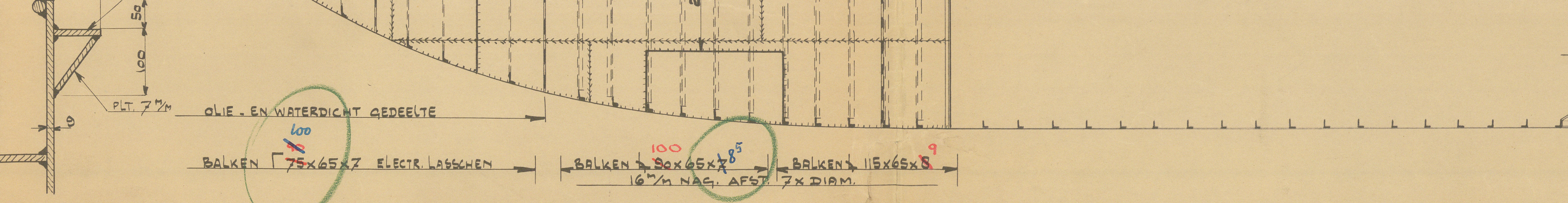
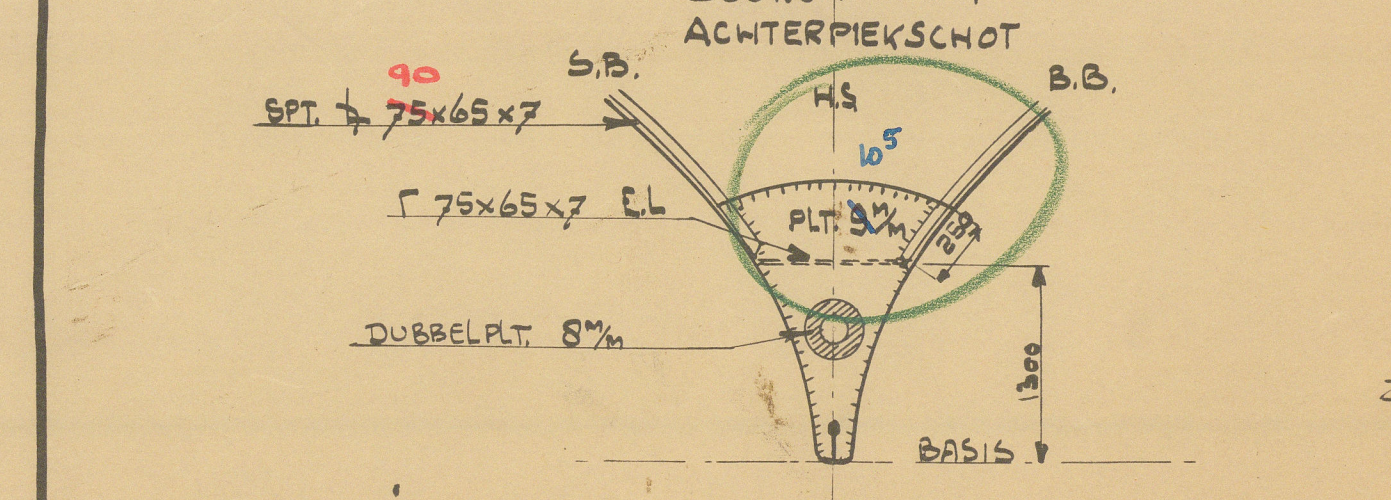
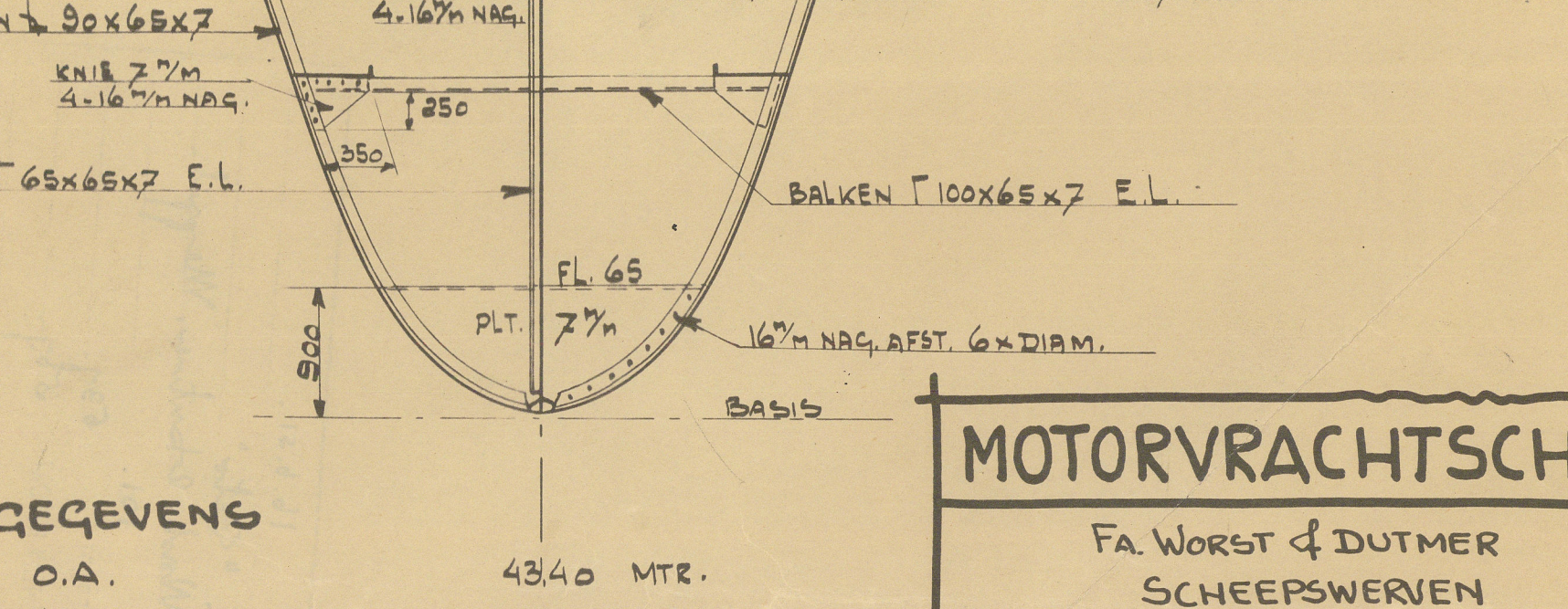
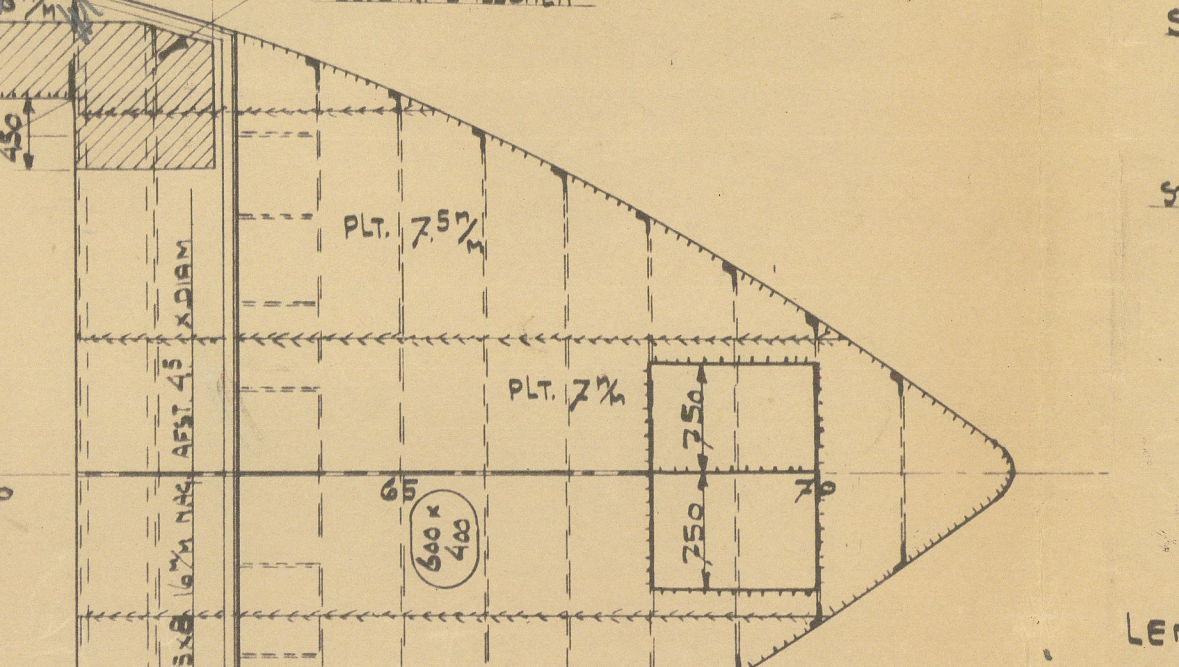
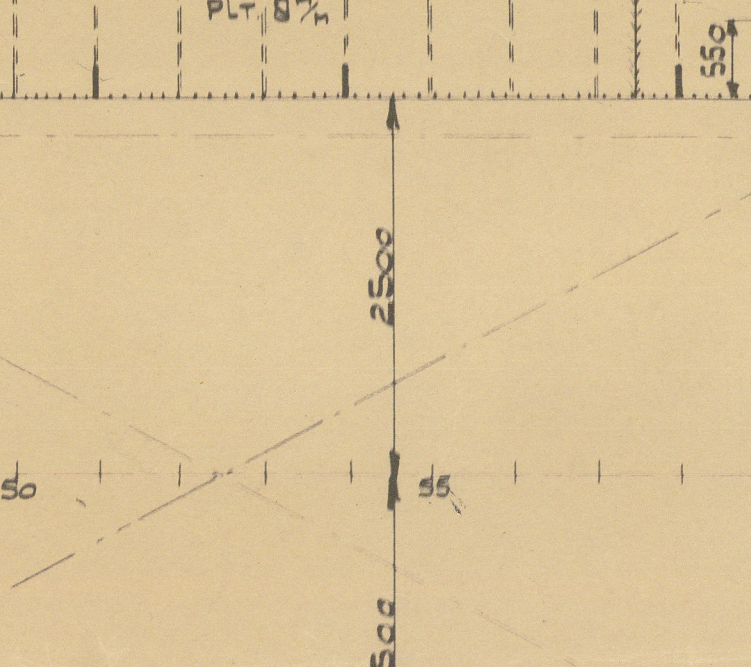
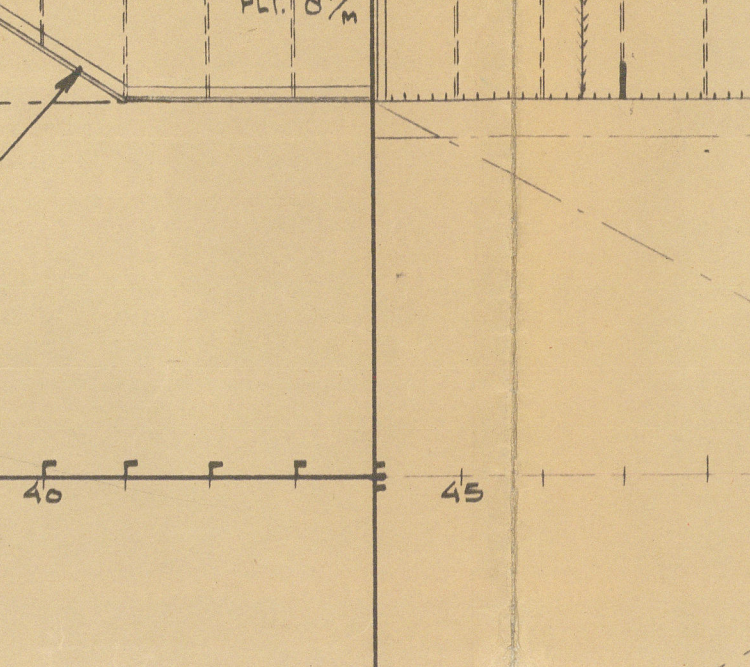
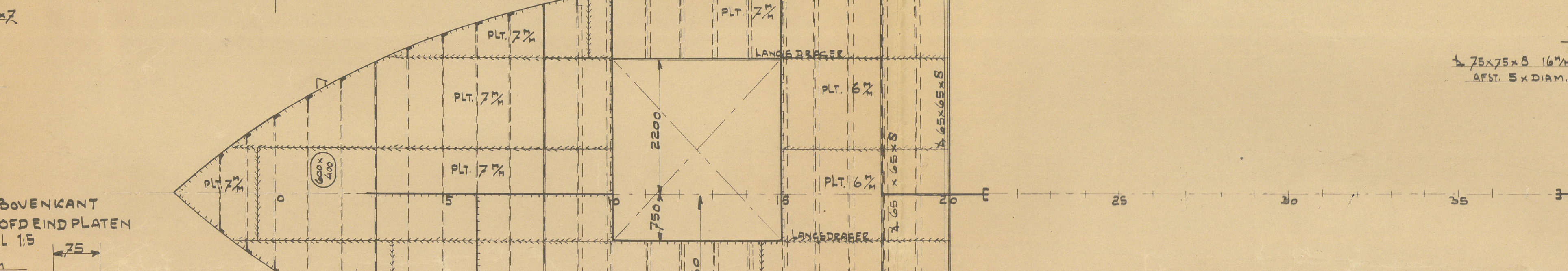
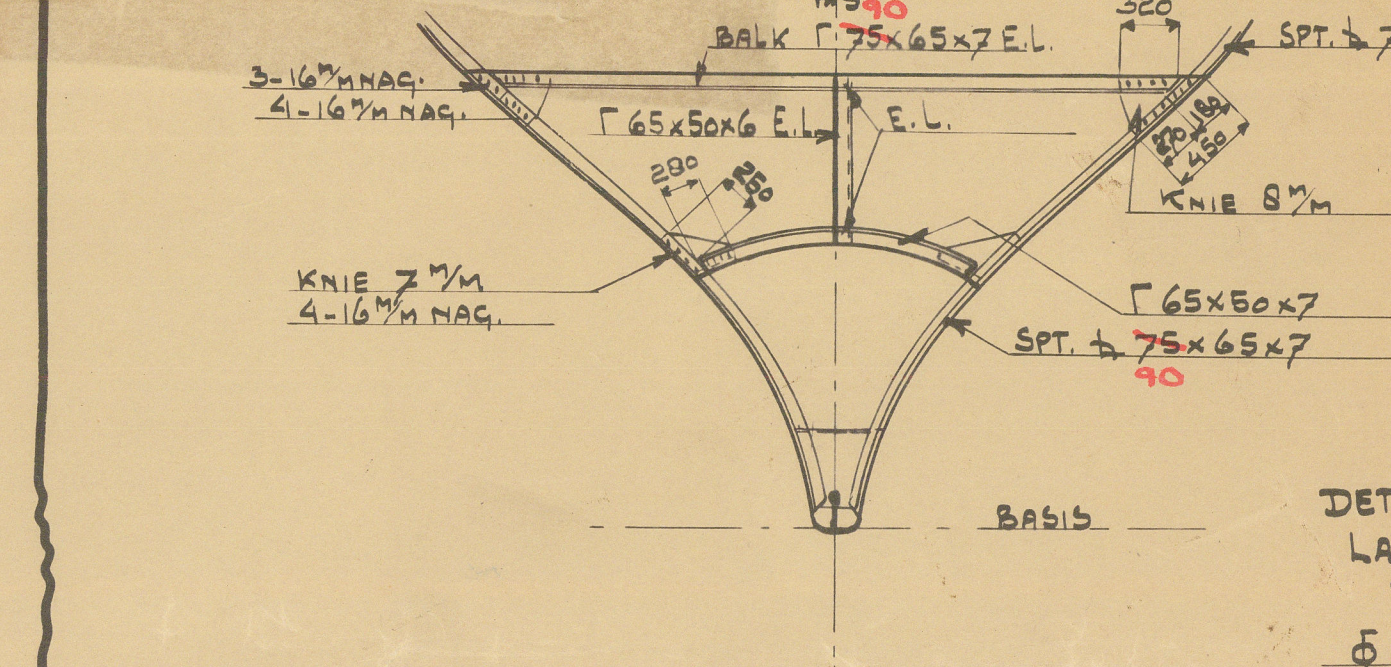
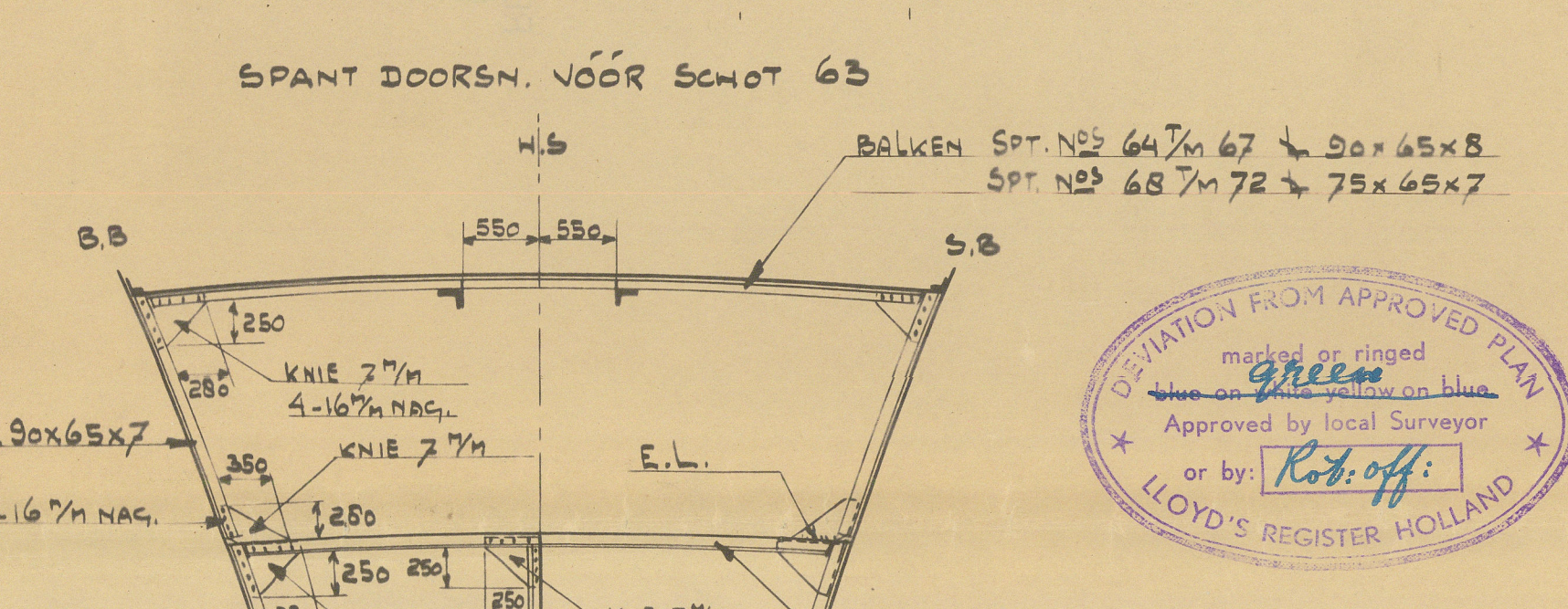
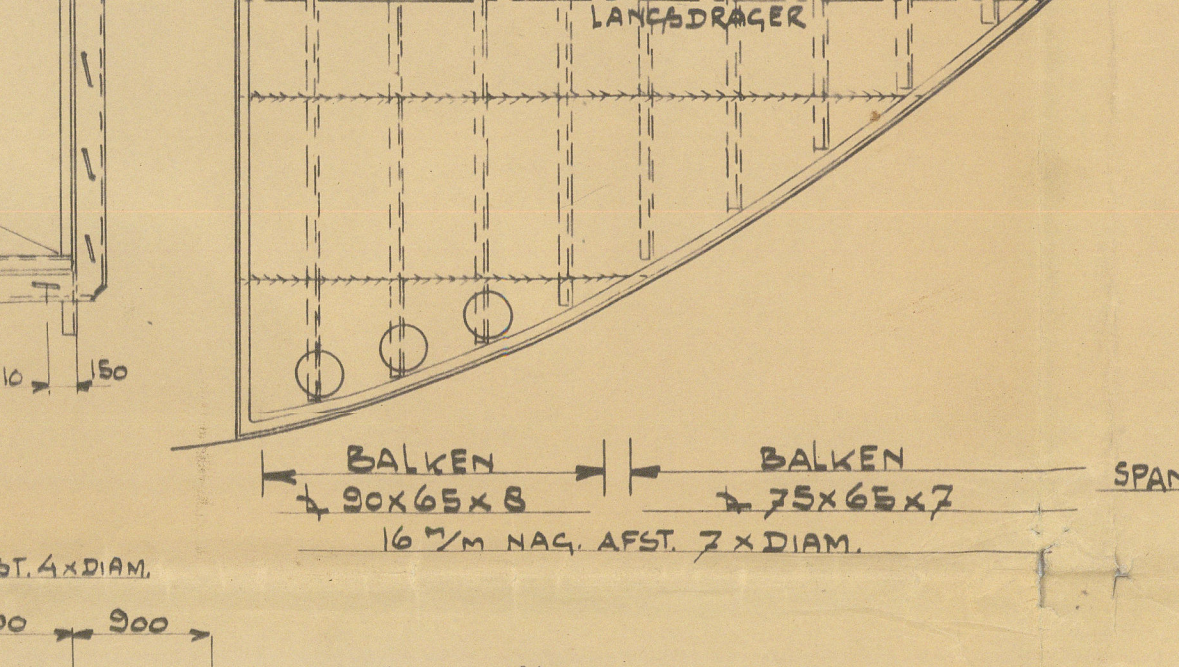
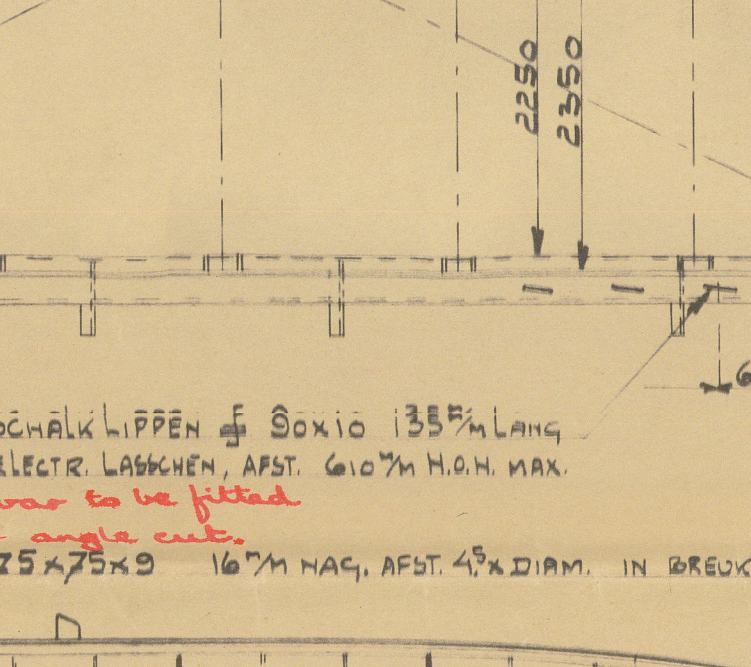
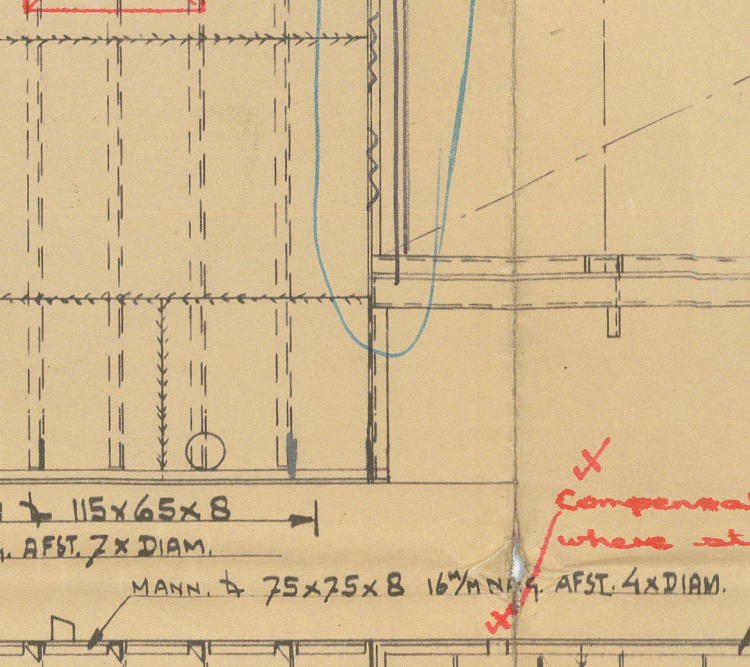
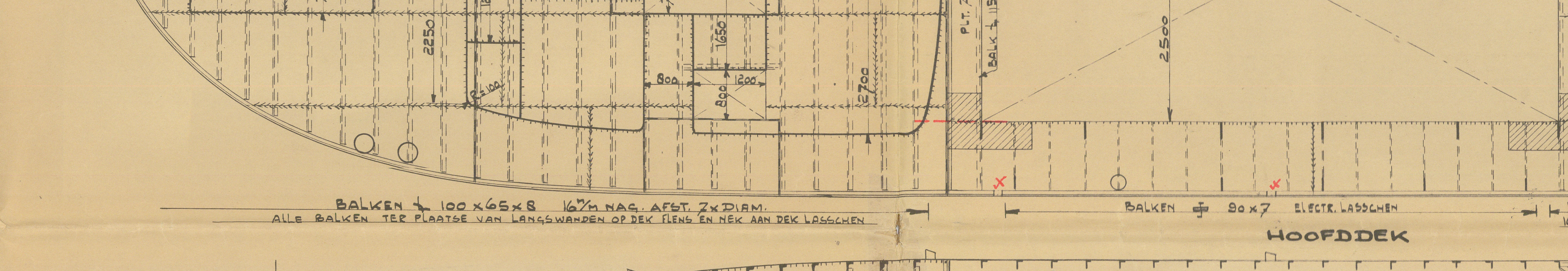
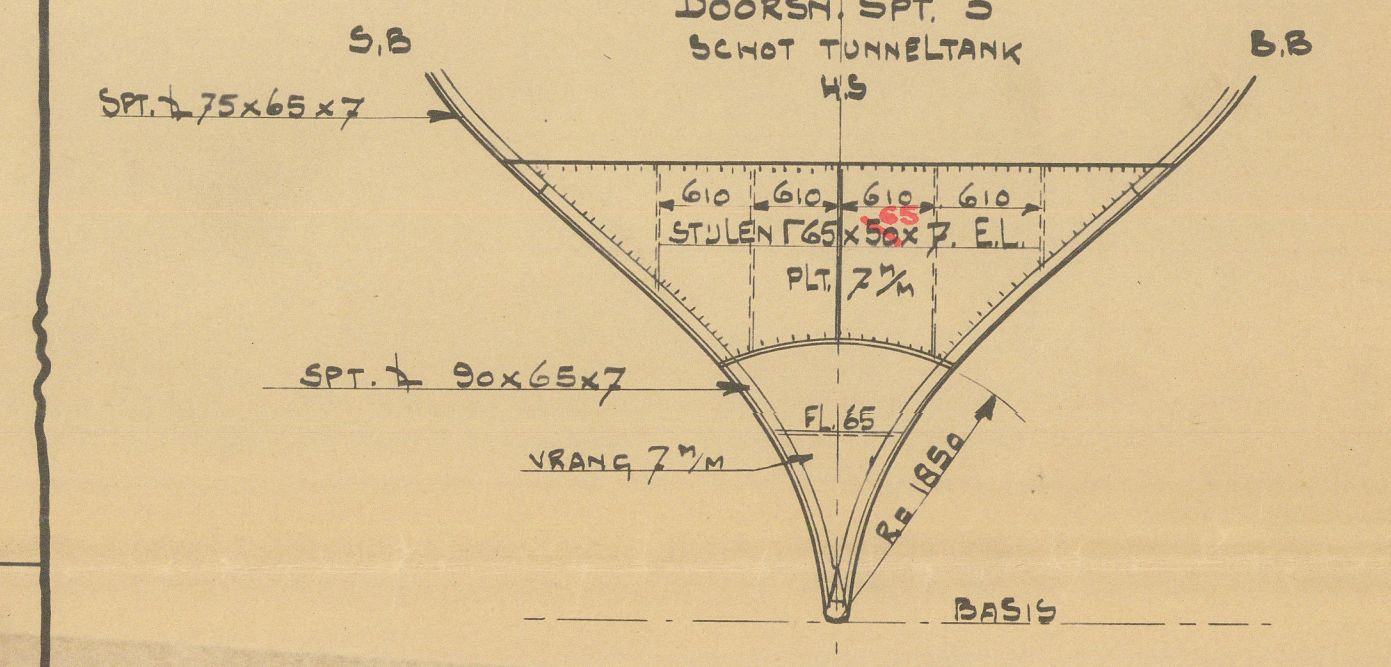
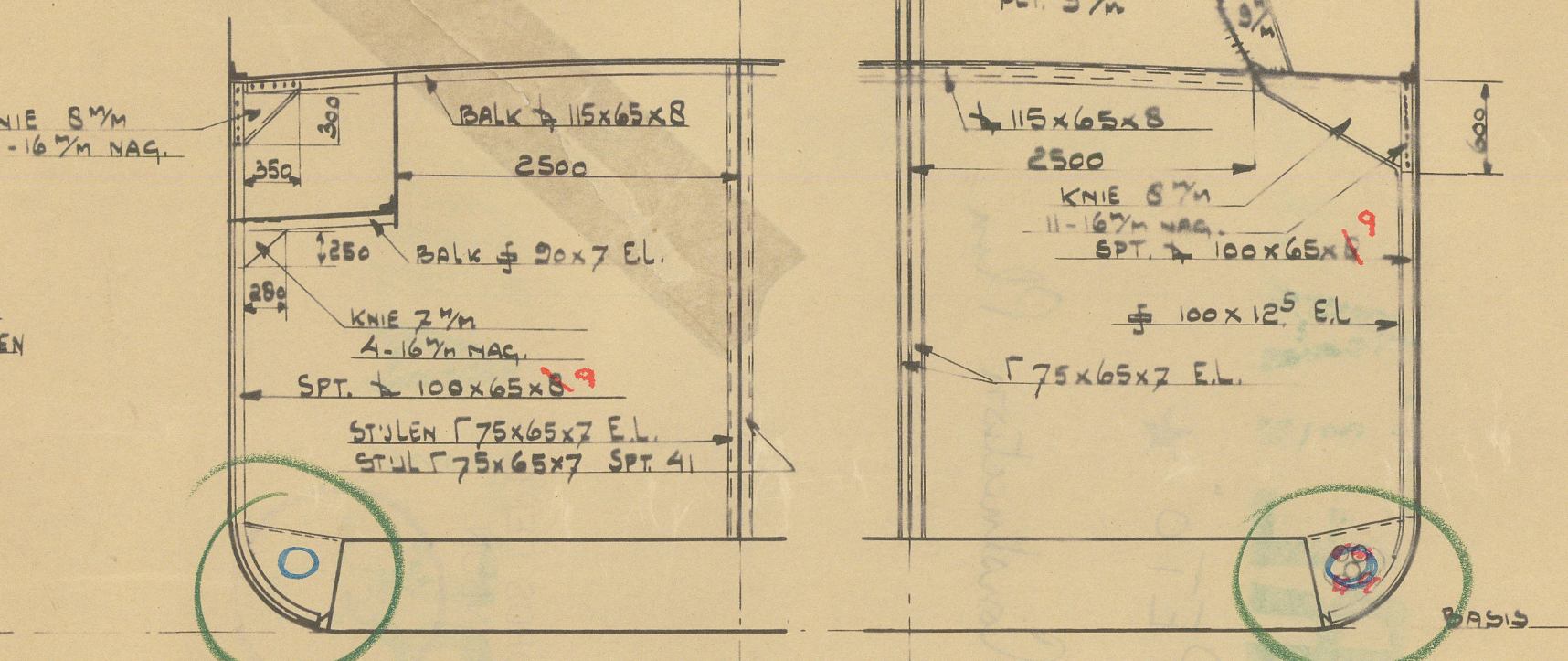
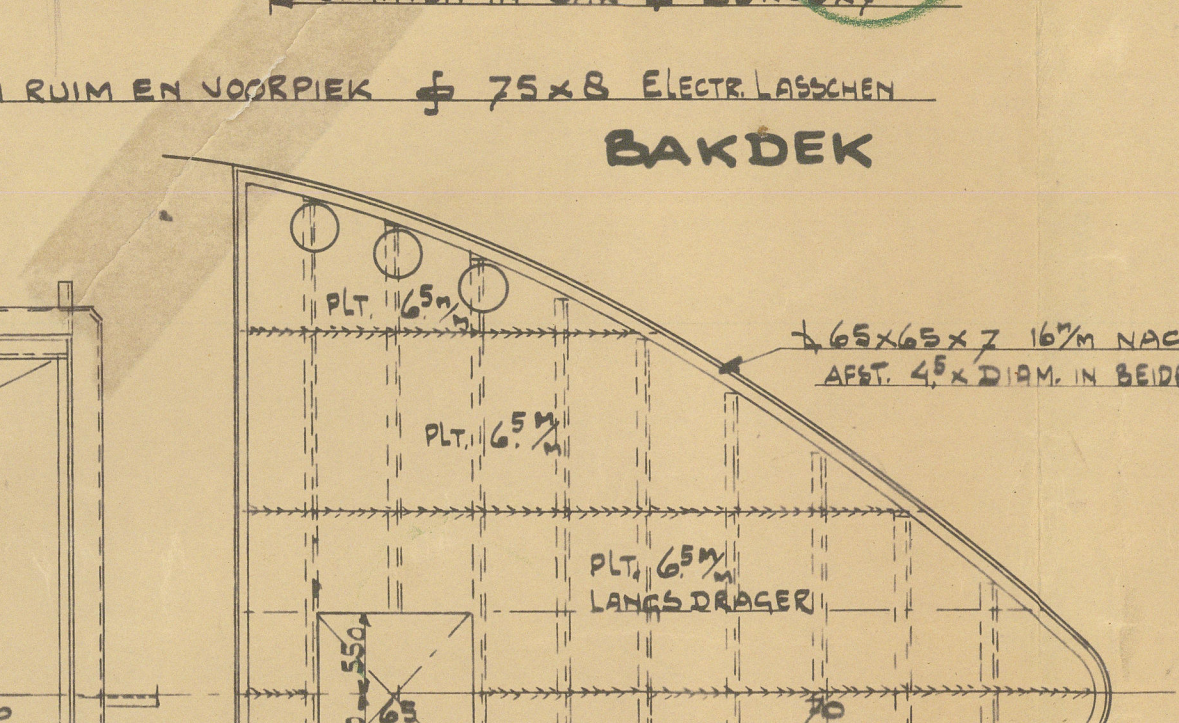
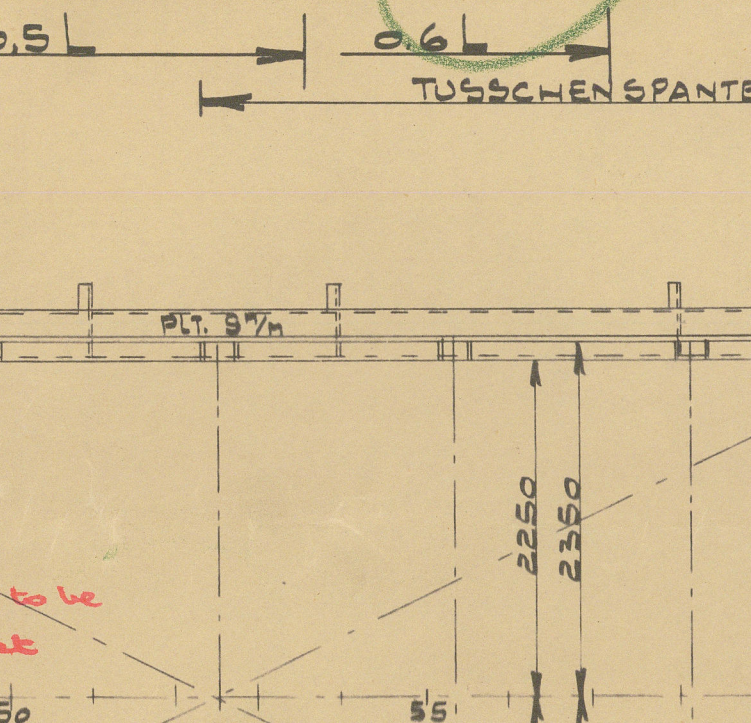
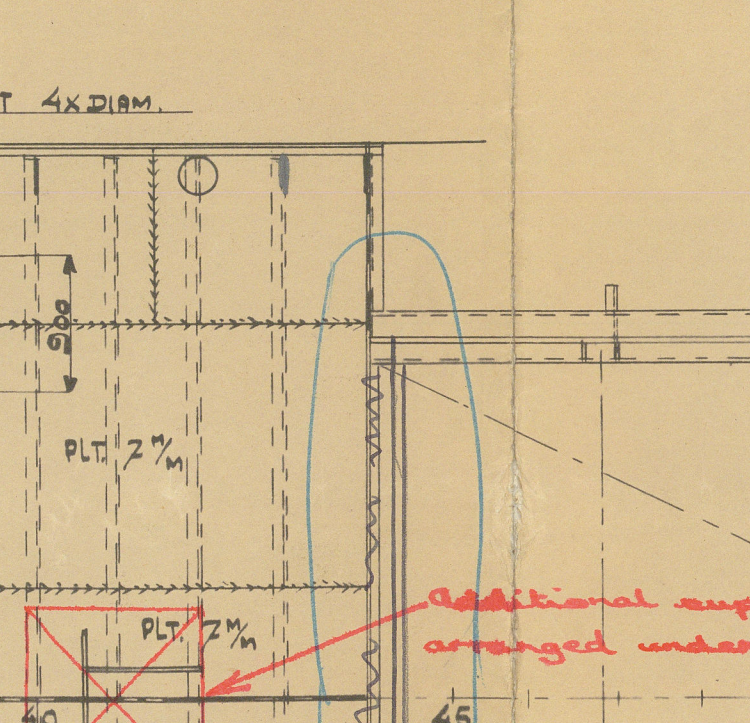
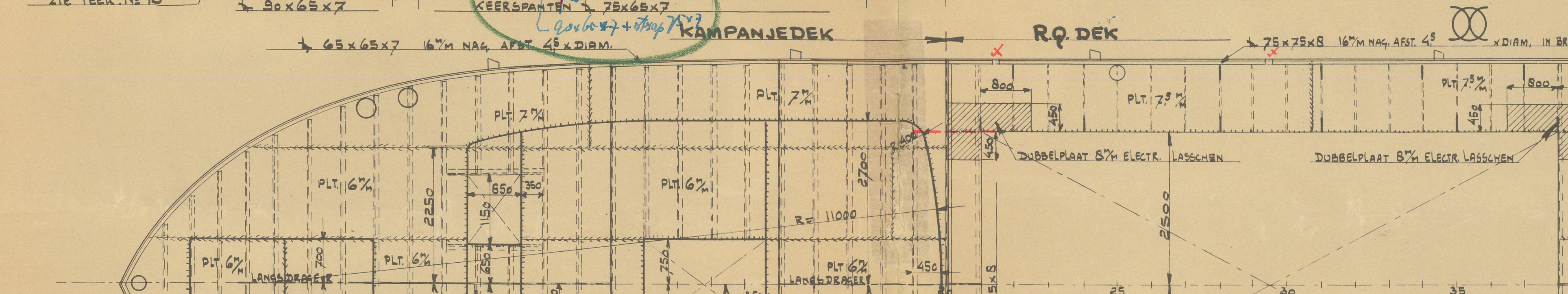
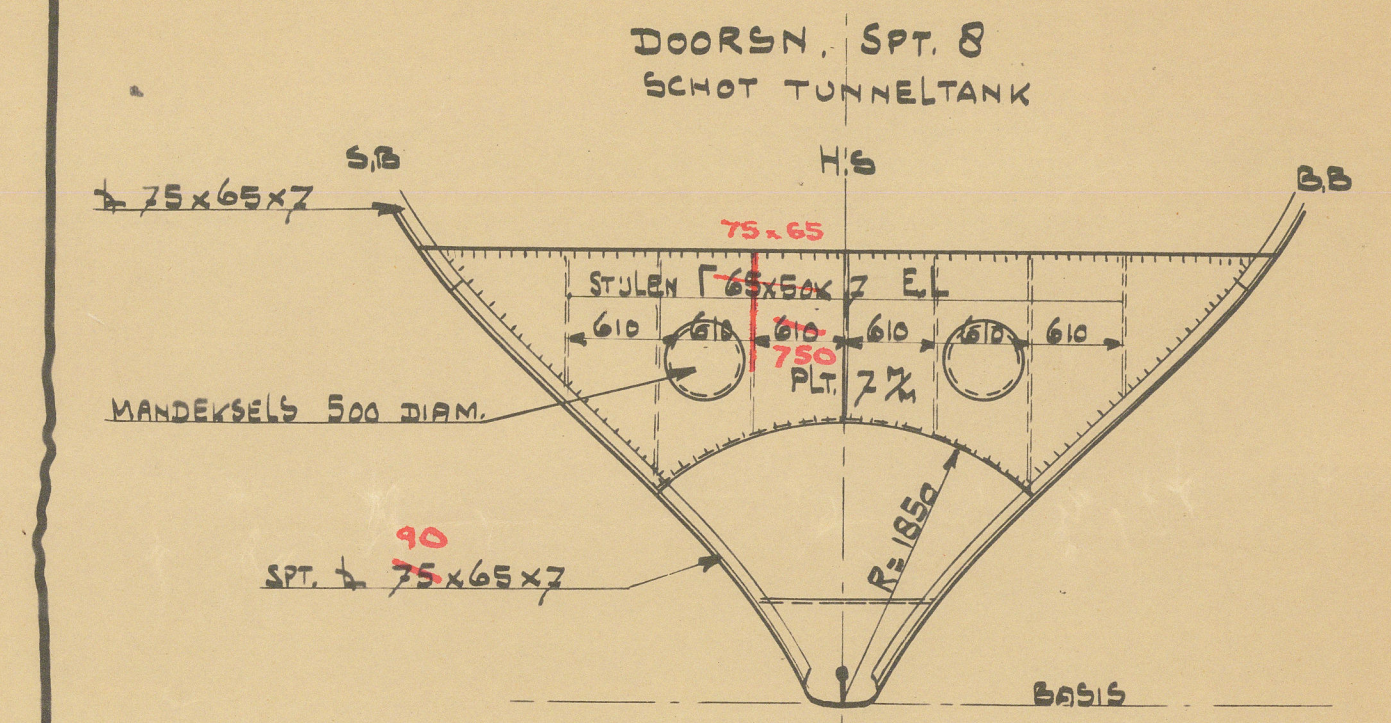
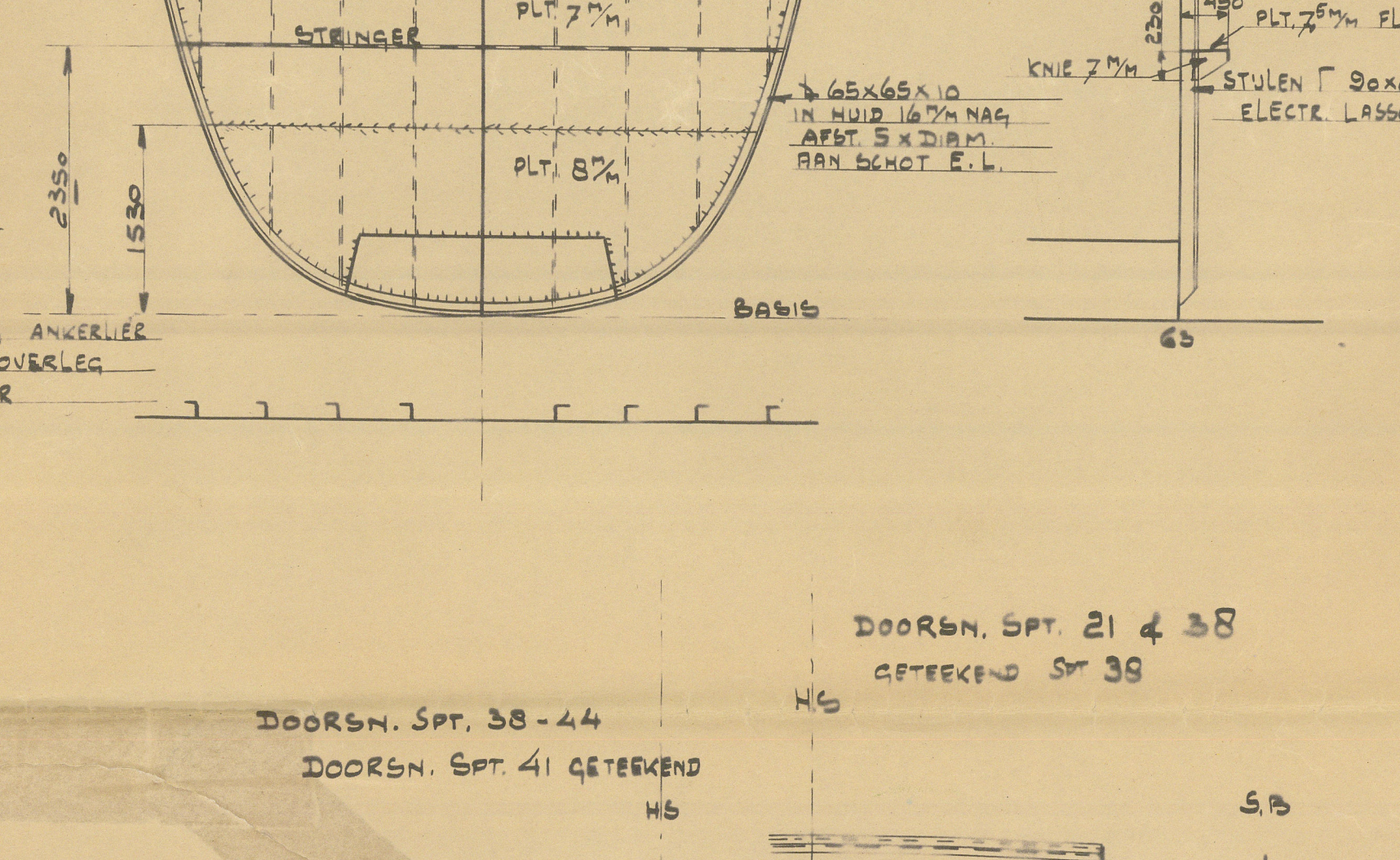
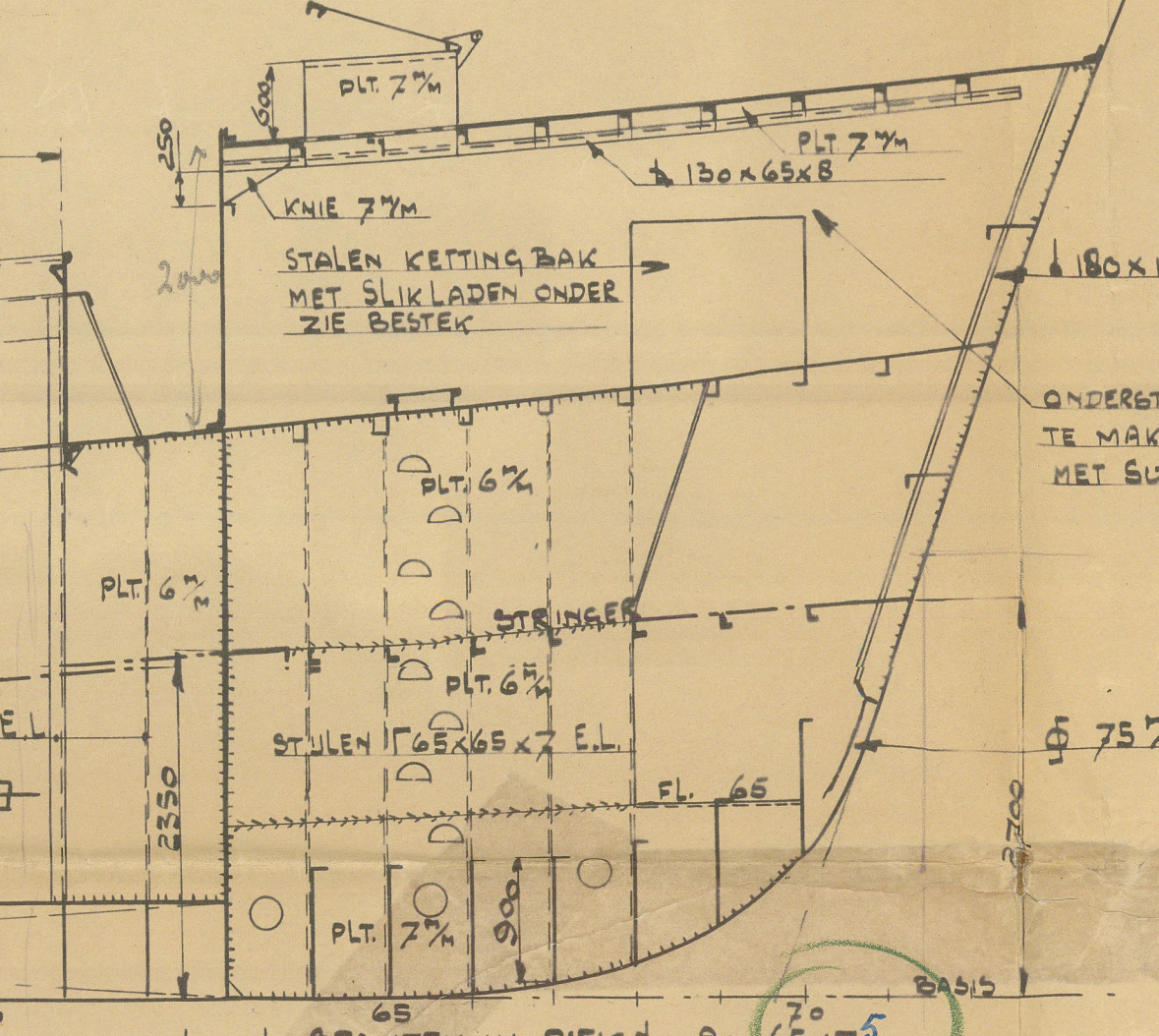
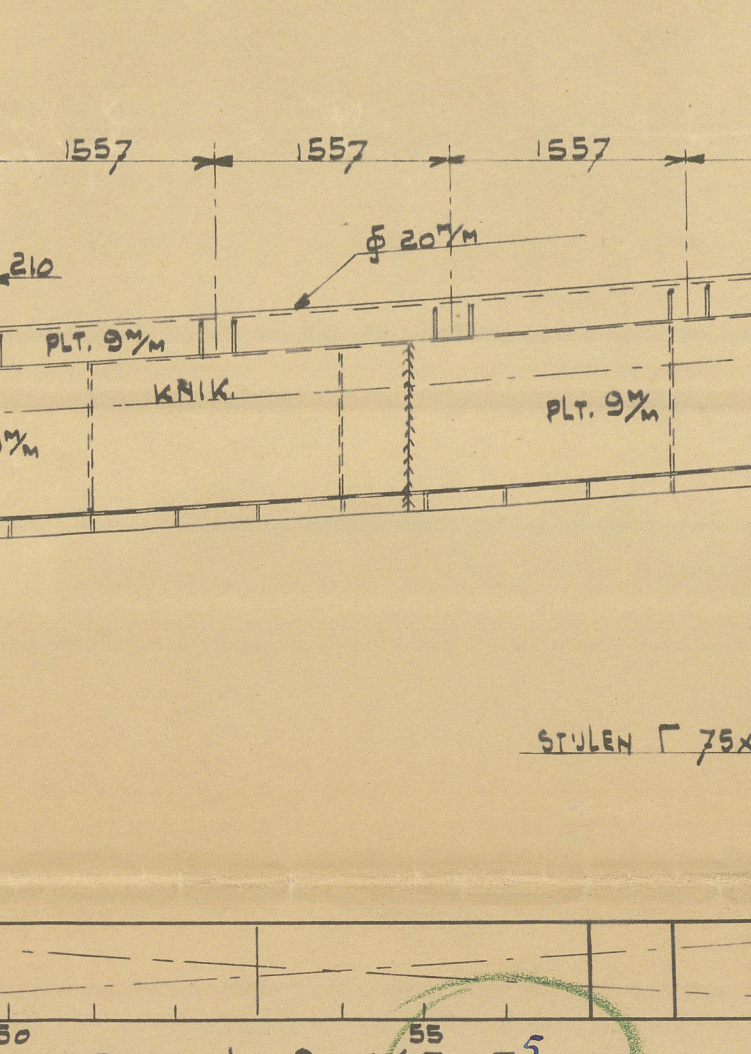
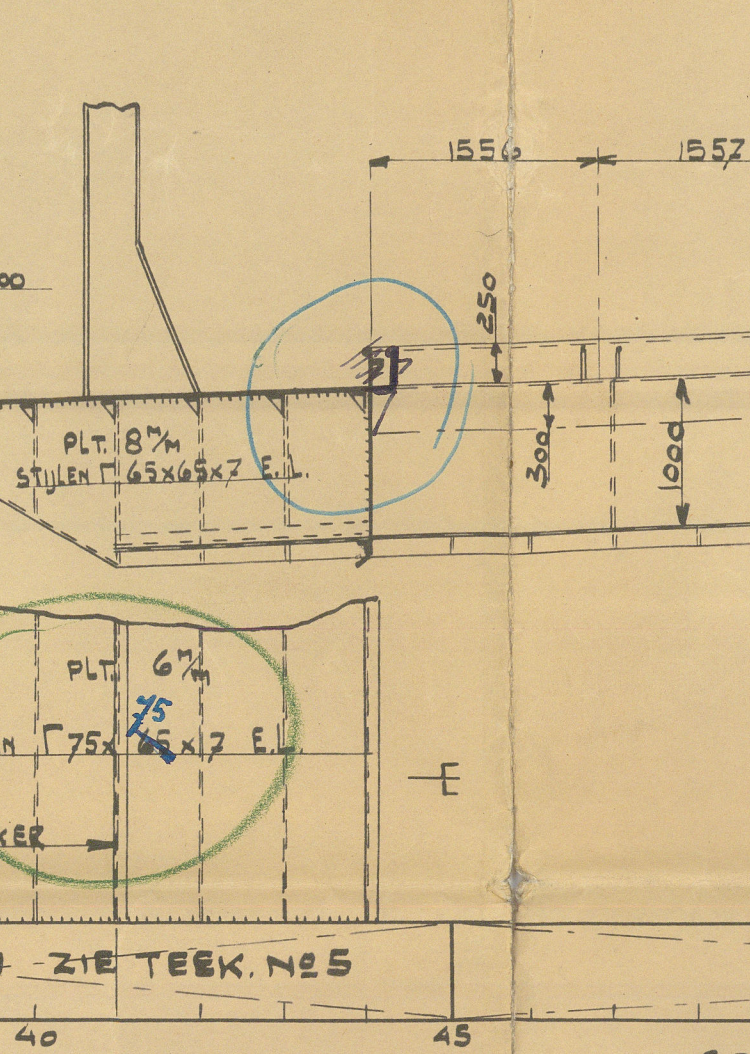
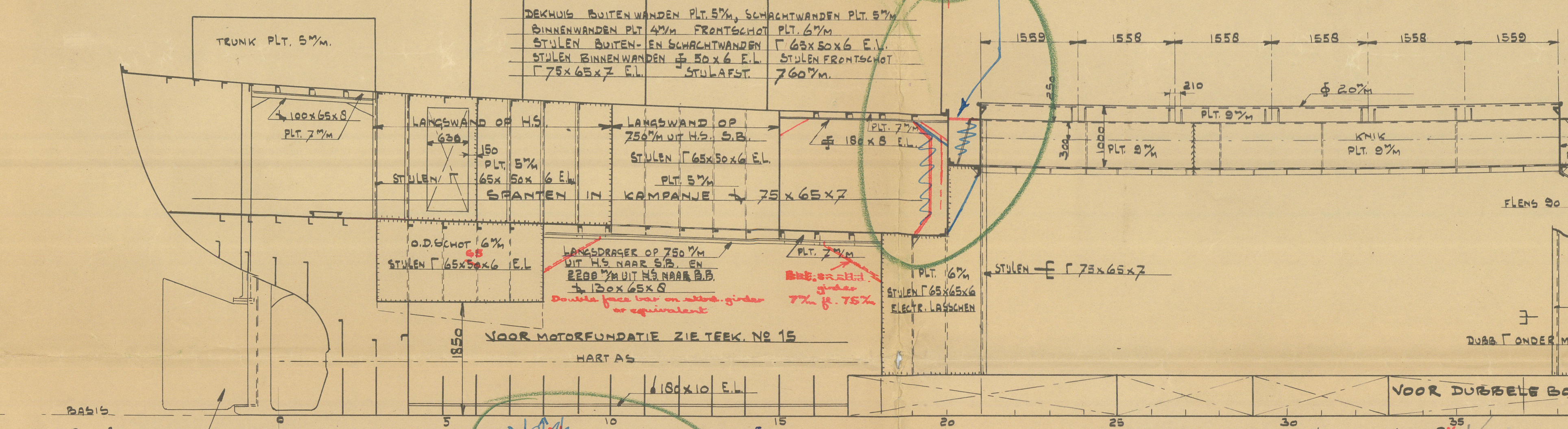
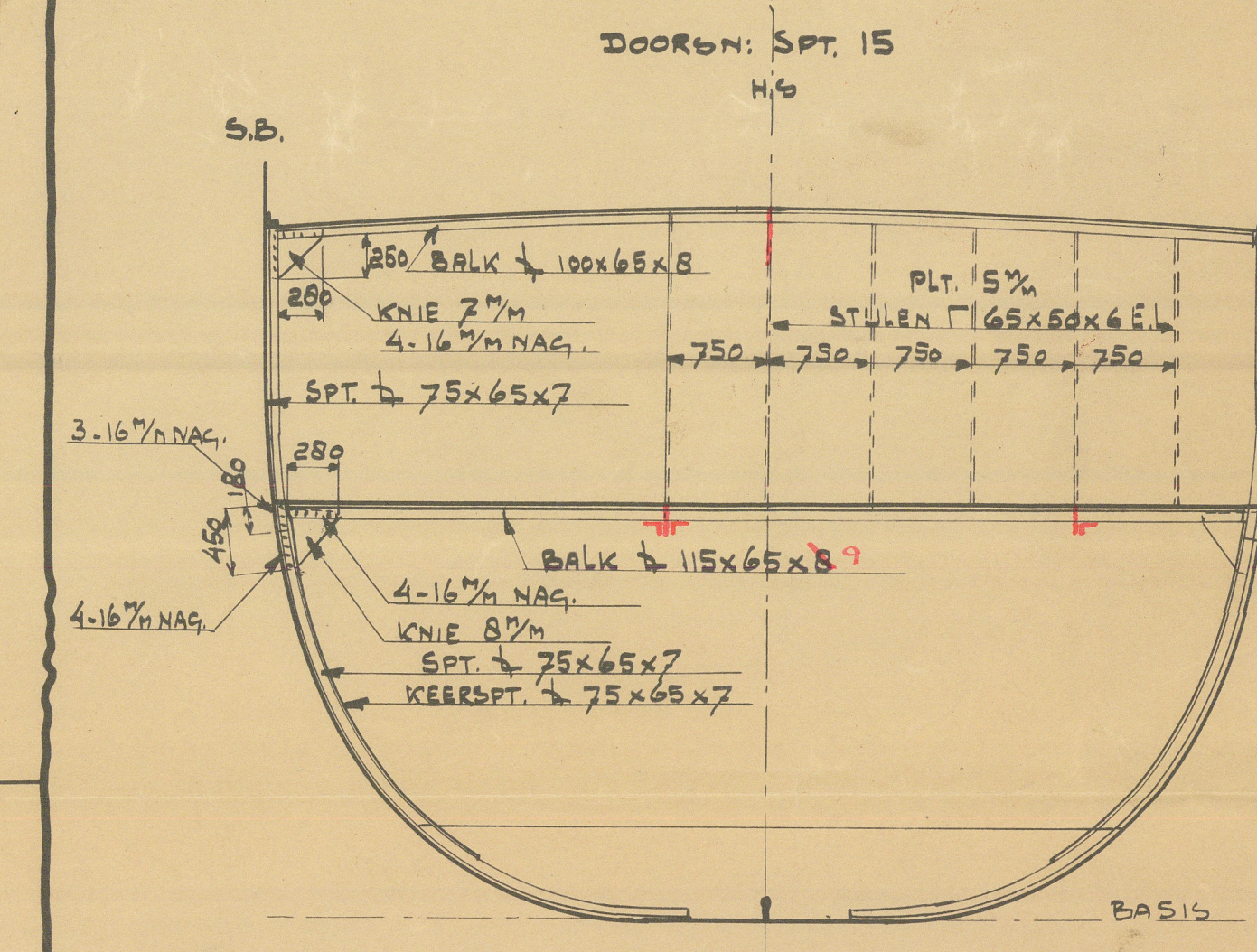
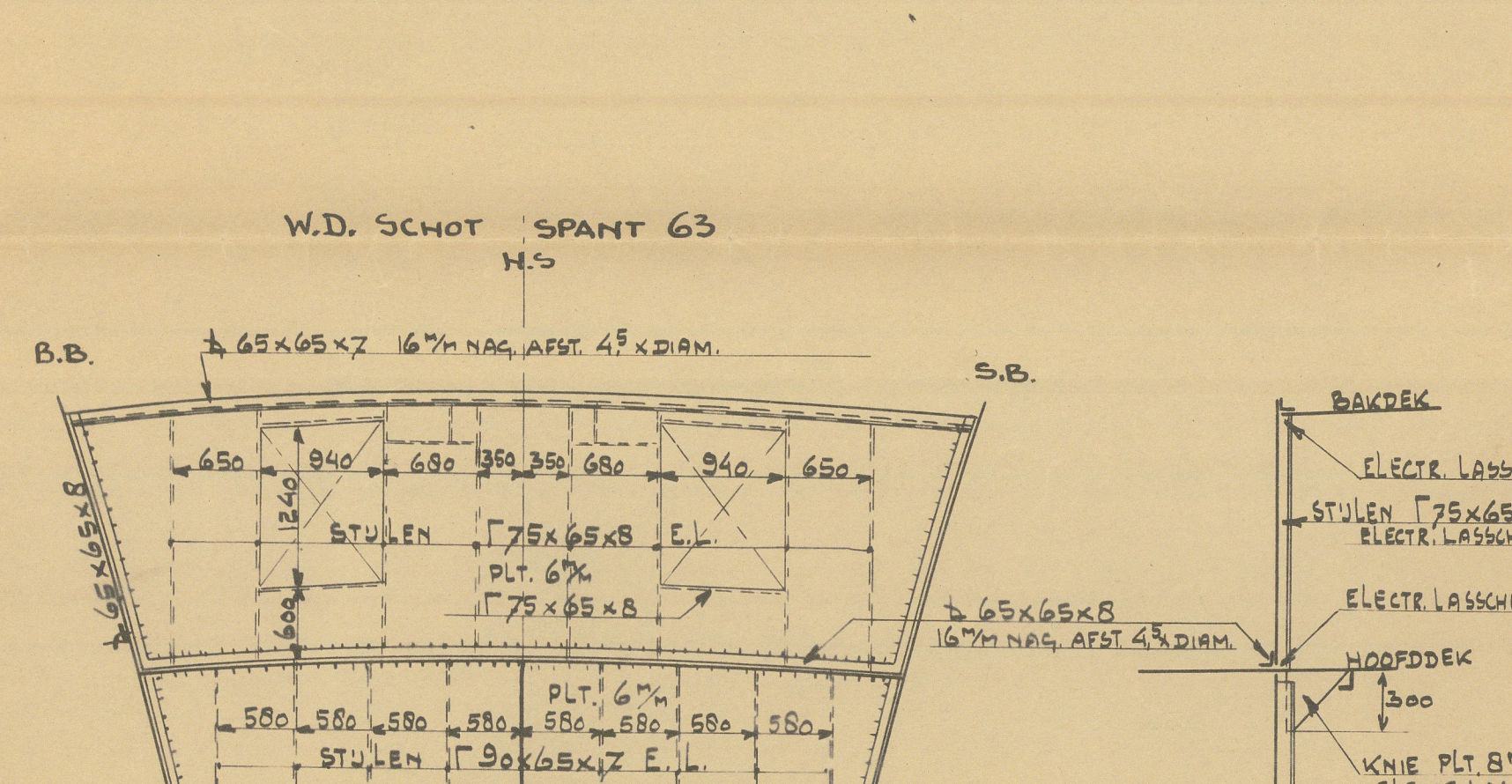
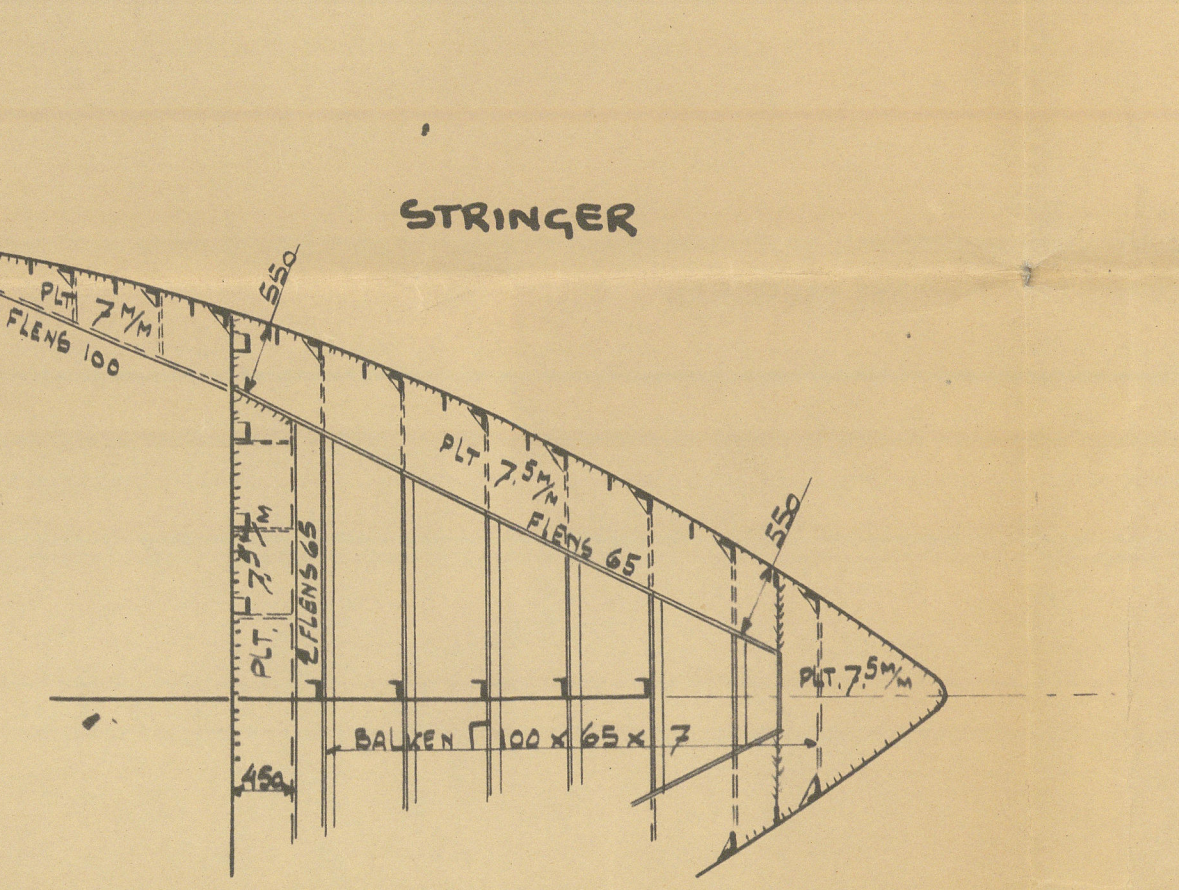
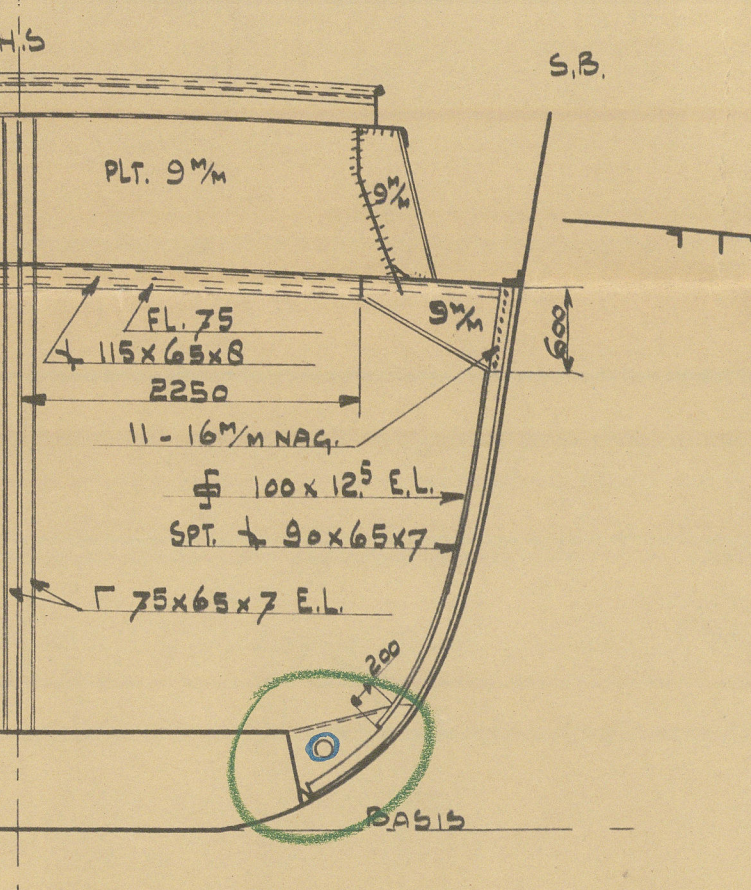
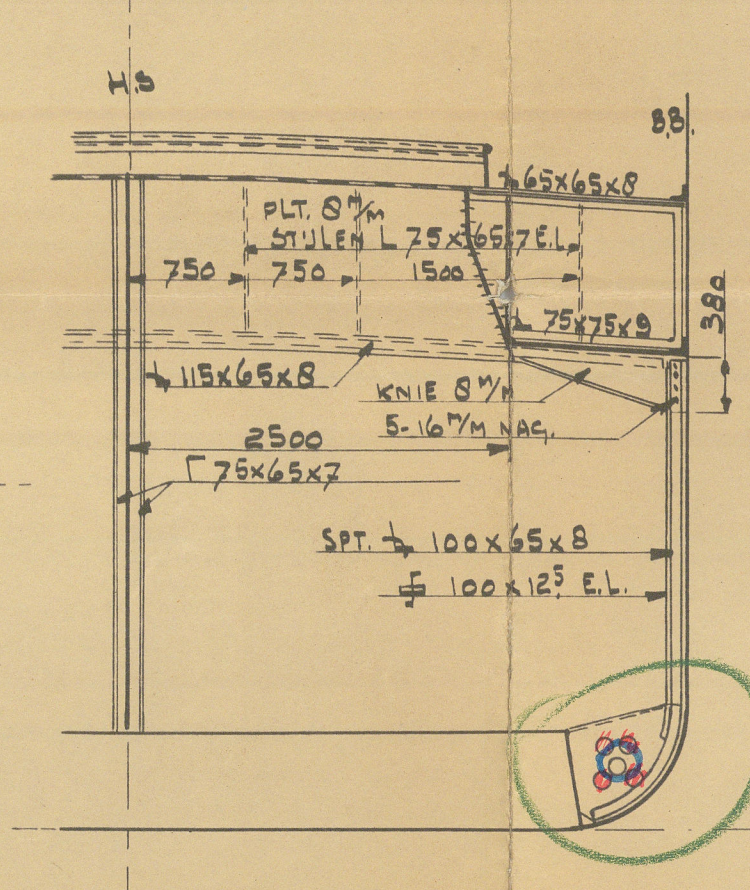
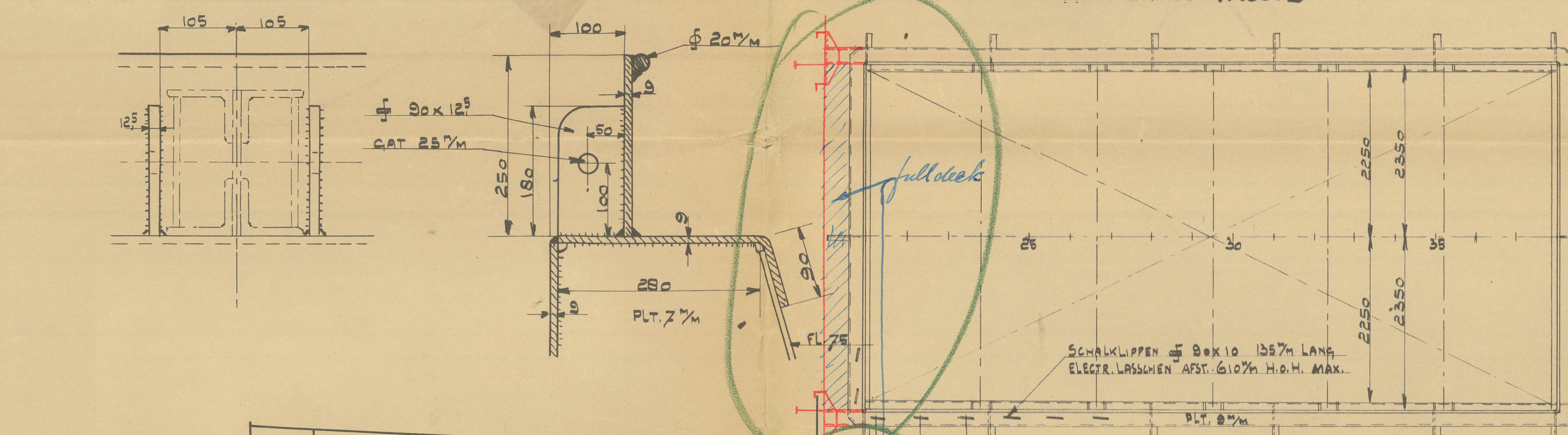
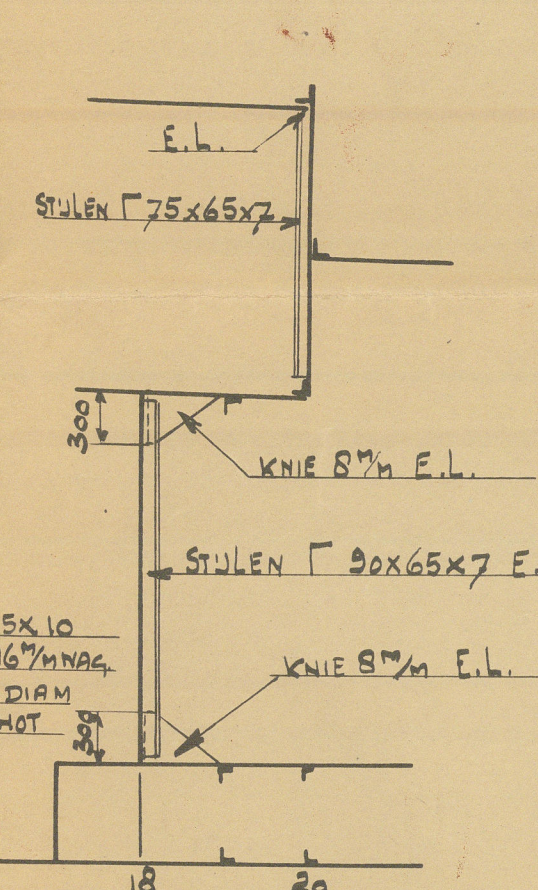
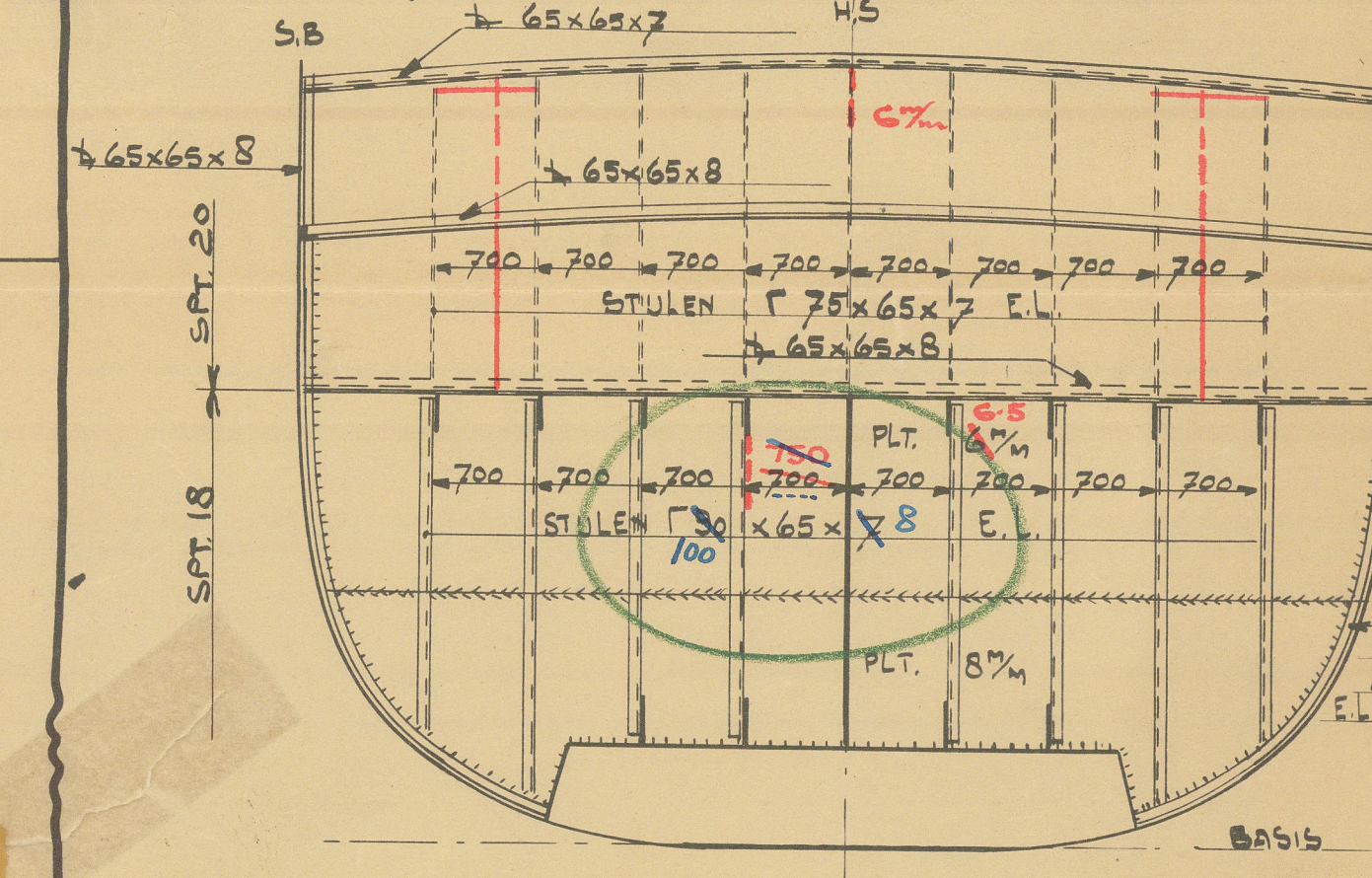
ACHTER LUKHOOFD

DOORSEN. SPT. 44

DOORSEN. SPT. 61

STRINGER

W.D. SCHOT SPANT 63



GEDEVEN

LENTE O.A.	4340 MTR.
LENTE L.L.	39915
BREEDTE 1/2 SPANTEN	740
HOLTE 1/2 ZUDE TOT HOOFDDEK	3.-
HOLTE 1/2 ZUDE TOT RQ DEK	4.-
DIEPGANG OP ZOMERWERK	2.95
KLASSE, BRITISH CORPORATION	B.S.*
CERTIFICAAT VAN DEURLIJKHEID	S.I. LETTER F

N.B. E.L. = ELECTR. LASSCHEN

MOTORVRACHTSCHIP

FA. WORST & DUTMER
SCHEEPSWERVEN
MEPPEL

SCHEEPSWOUKUNDIG BUREAU
J. GOEDKOOP
DELFTZUL - HOLLAND
ONTWERP C.502 JUNI 1950

GOEDGEKEURD
CONSTRUCTIEPLAN
BOUW NO 101, TEEK NO 6

SCHAAL 1:50

LLOYD'S REGISTER

Foundation

RETAIN

"PETO" ★

Construction Plan.

RECORDS DEPT..
LONDON

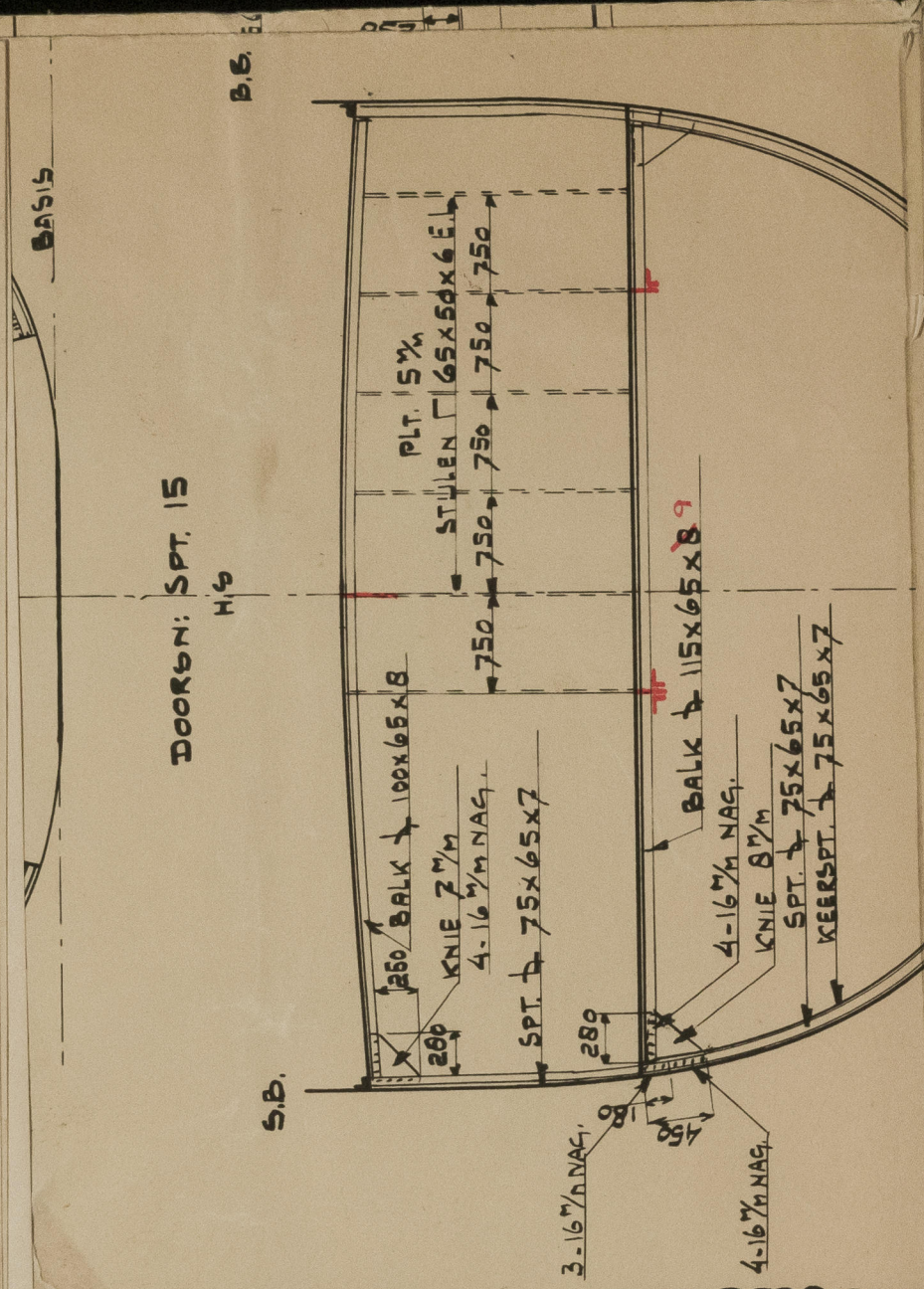
3



© 2021

Lloyd's Register
Foundation

W1091-0205



GRONINGEN: 16.6.51.

SHIP: M.V. "Peto"

YARD: West Eindhoven, Middel.

YARD NUMBER: 101.

NUMBER C. 11 REPORT: 537.

NUMBER FIRST ENTRY REPORT: 567.

SISTER VESSEL:

DEVIATIONS FROM PREVIOUS PLAN: