

29/5/19

Arrangement of boilers.

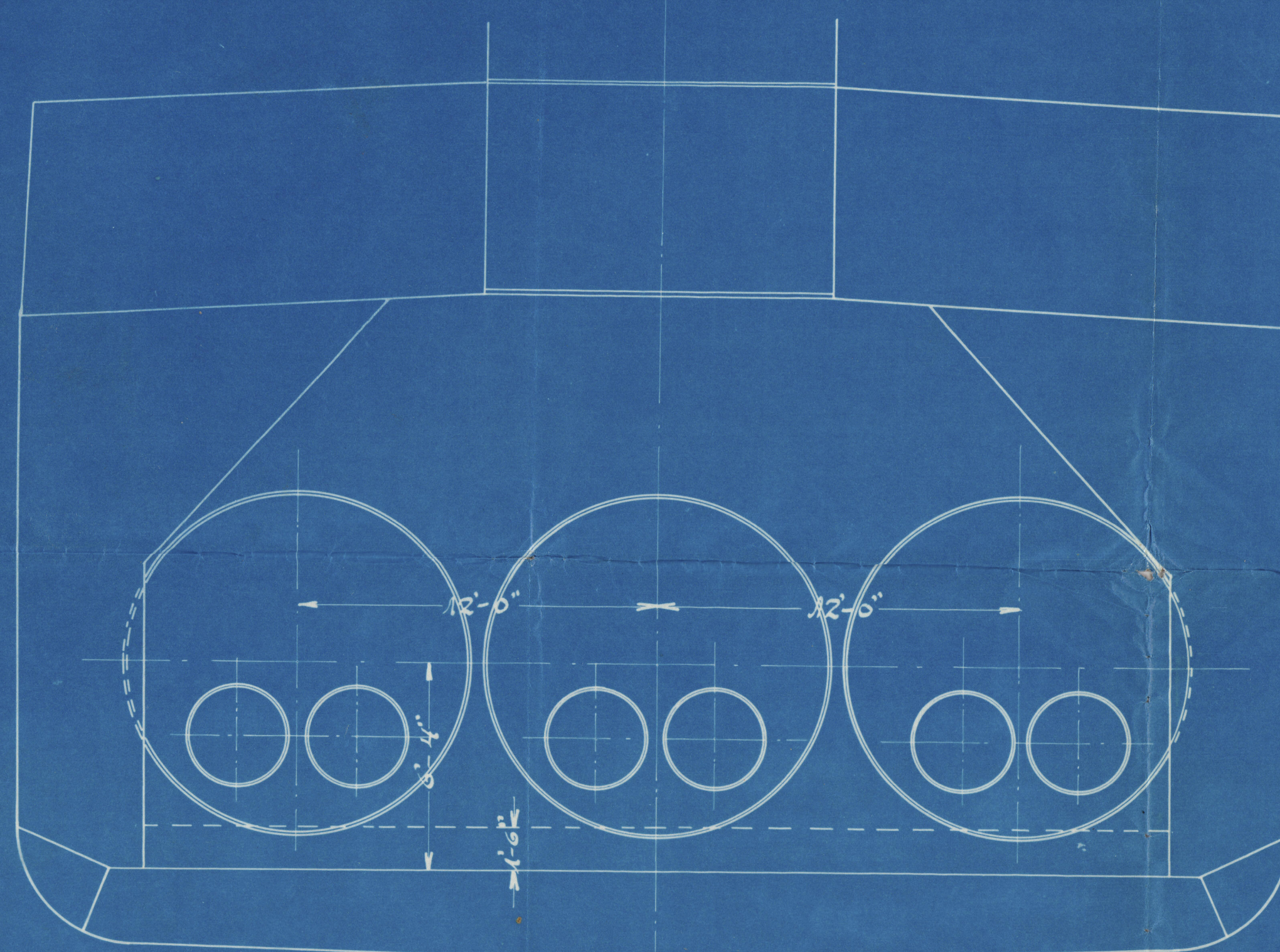
Marine-boiler 1-18.

Working-pressure=185 lbs. q.s. inch.

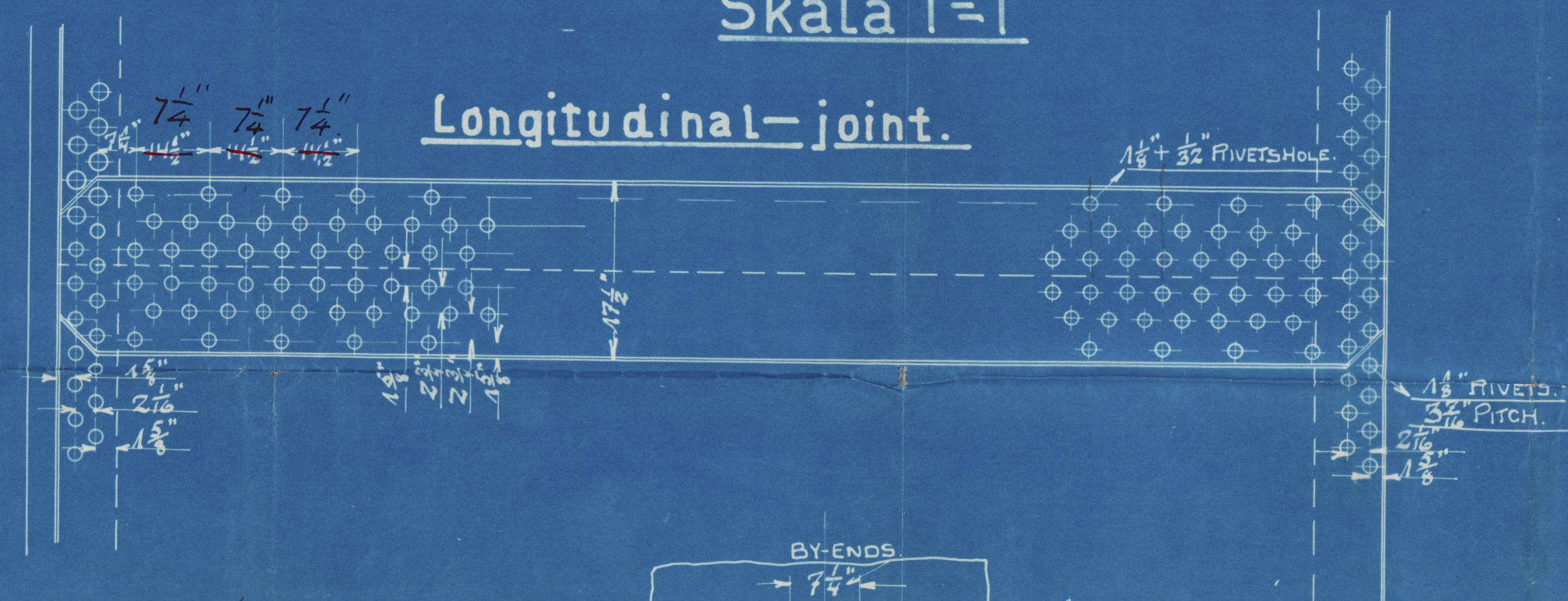
Heating-surface =1238 q.s.feet.

Grate — " — = 33 — " — .

Skala 1"=1'

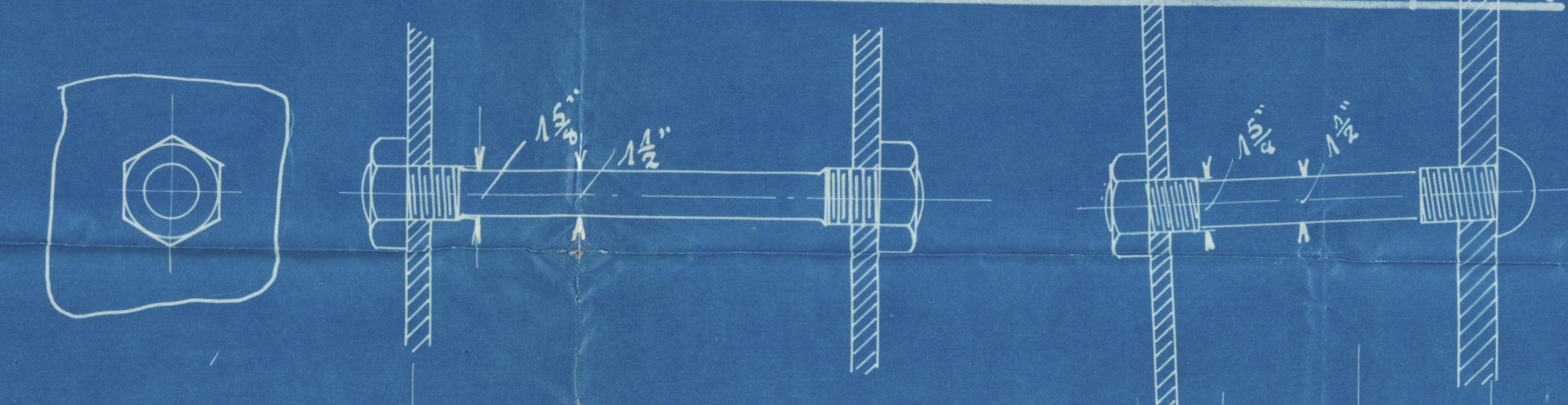


Longitudinal-joint.

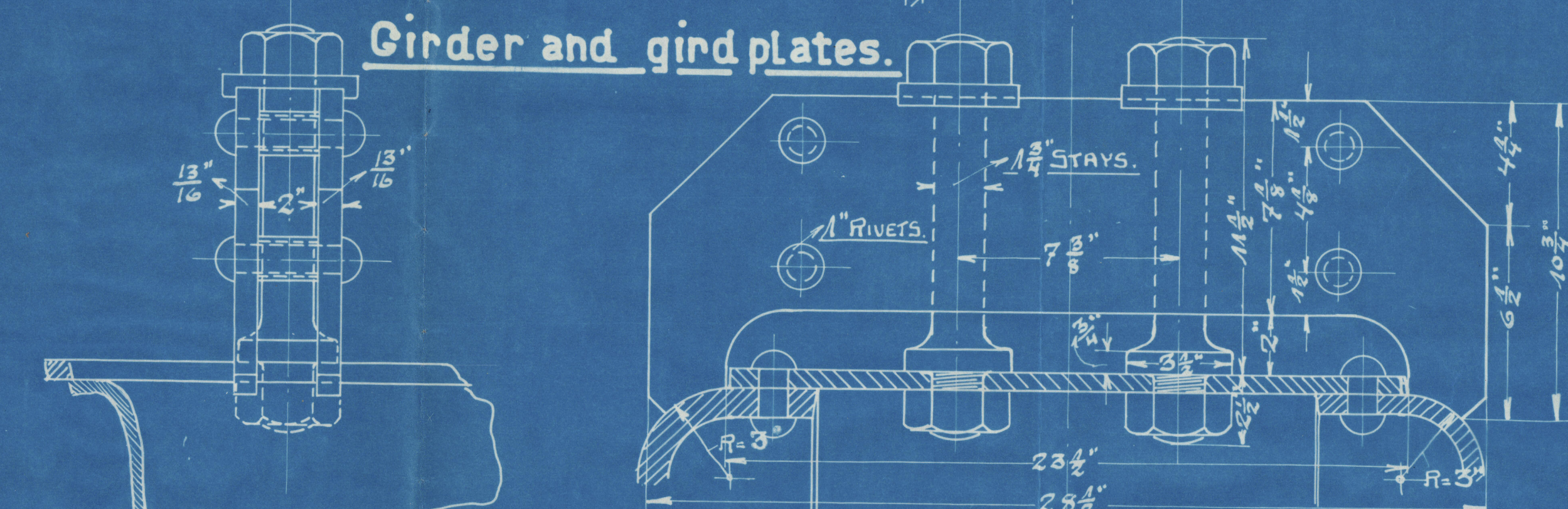


Screwed-stays

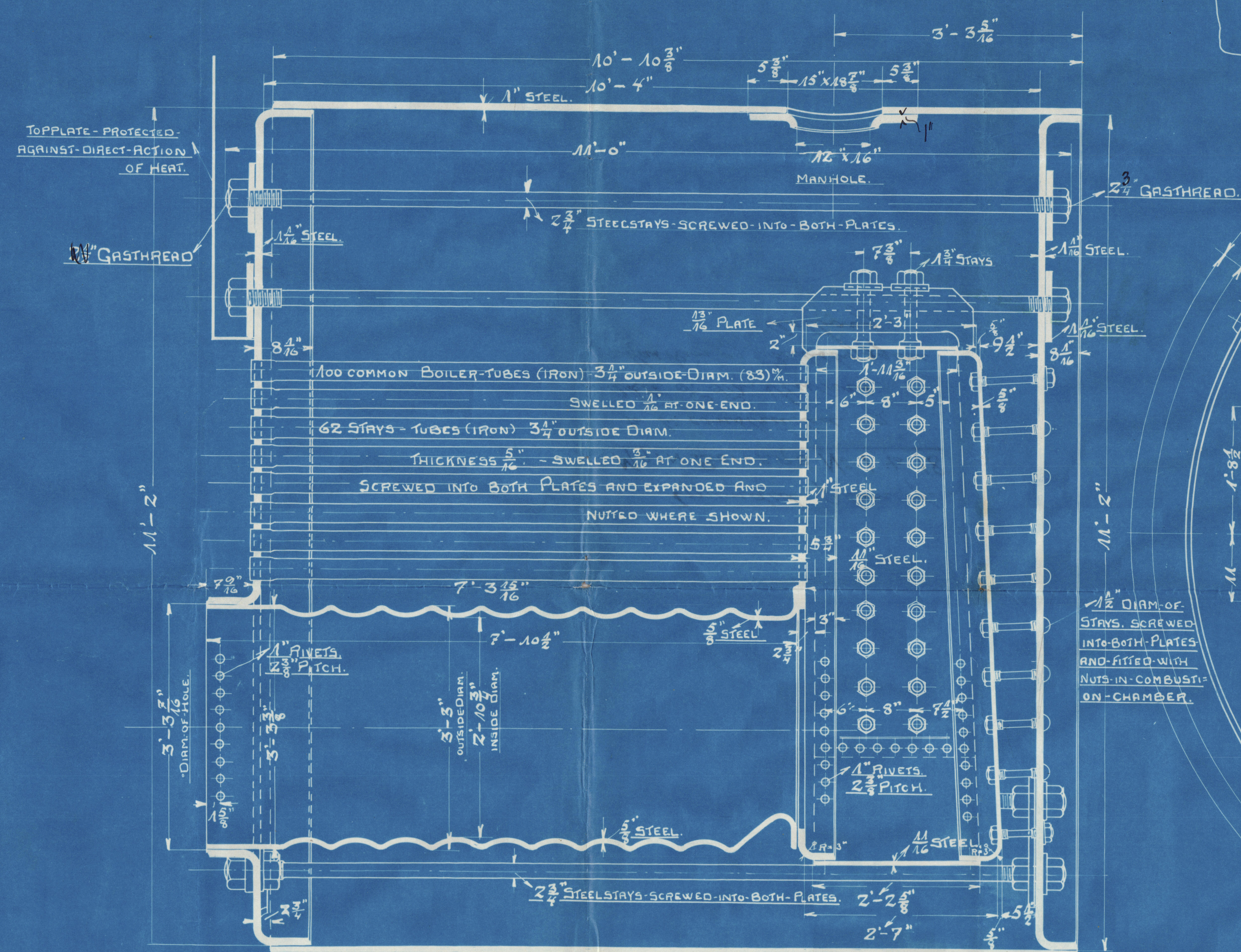
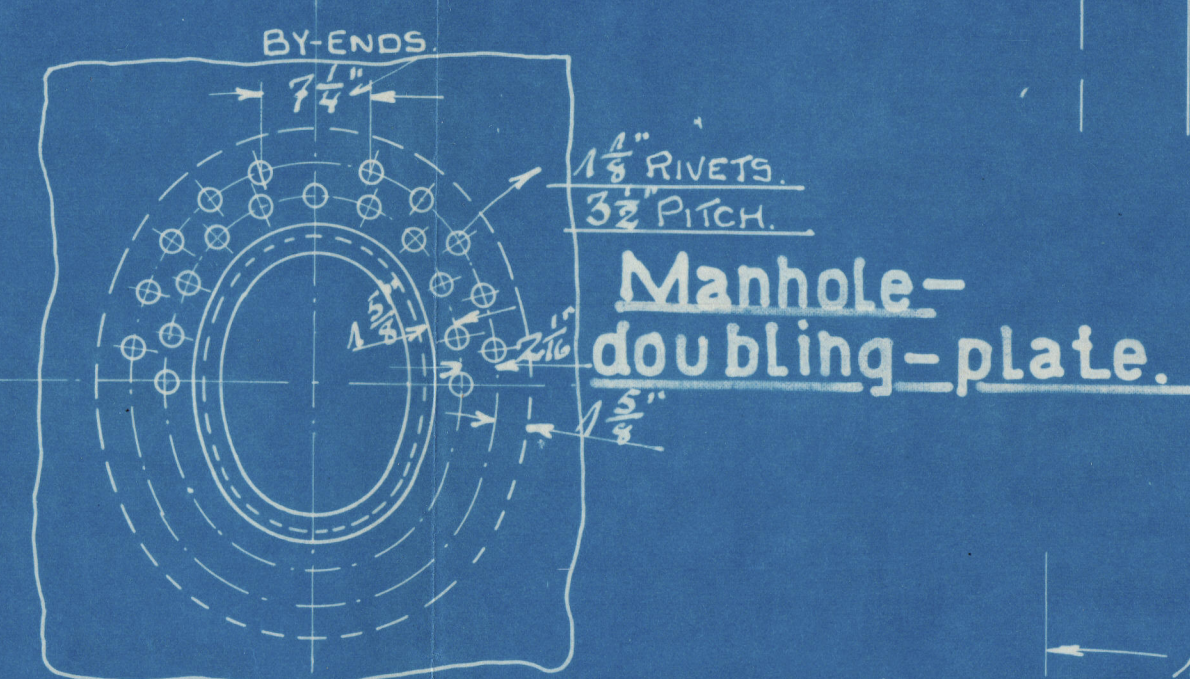
between
combustion-chambers and back-plate.



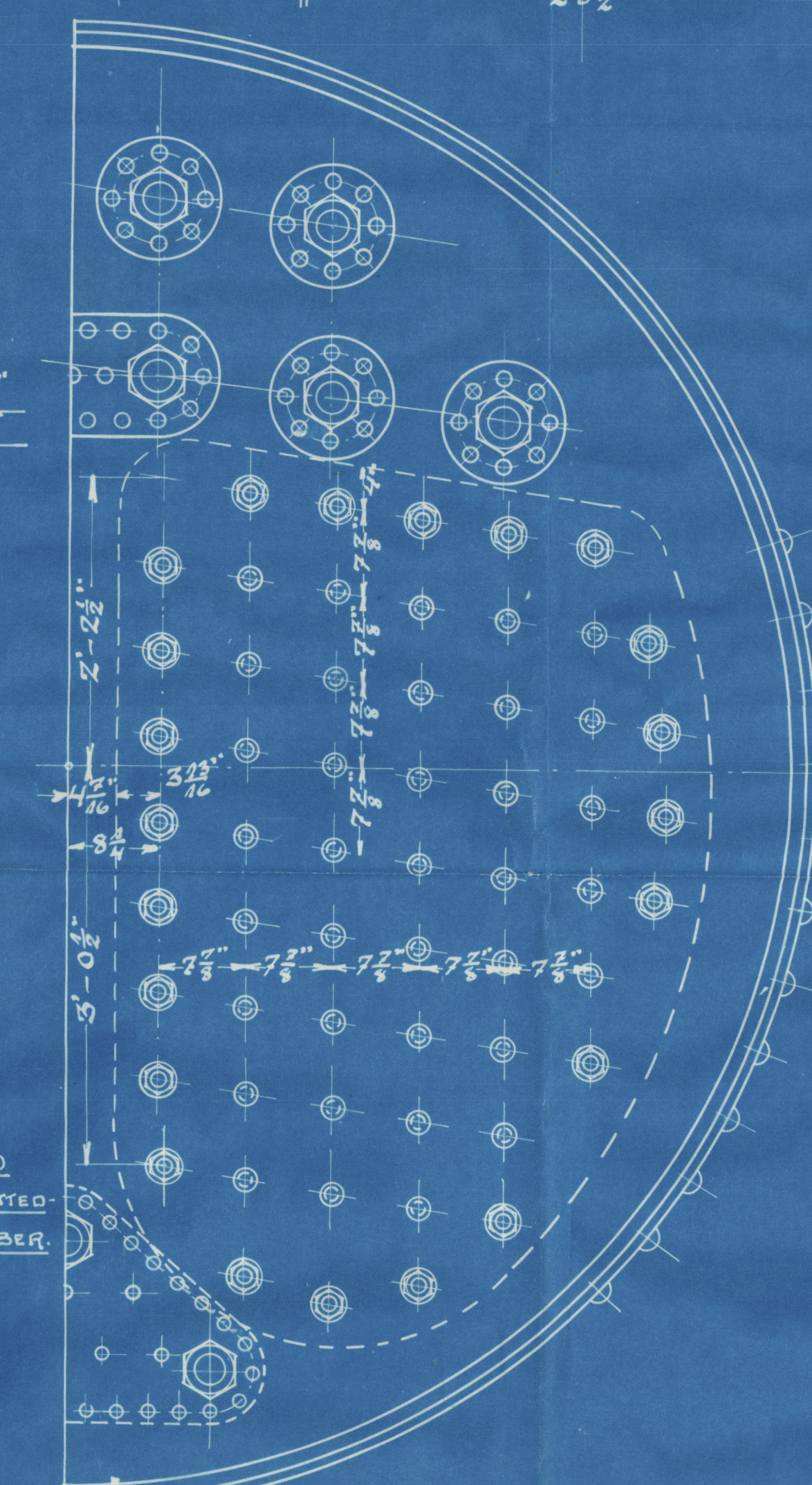
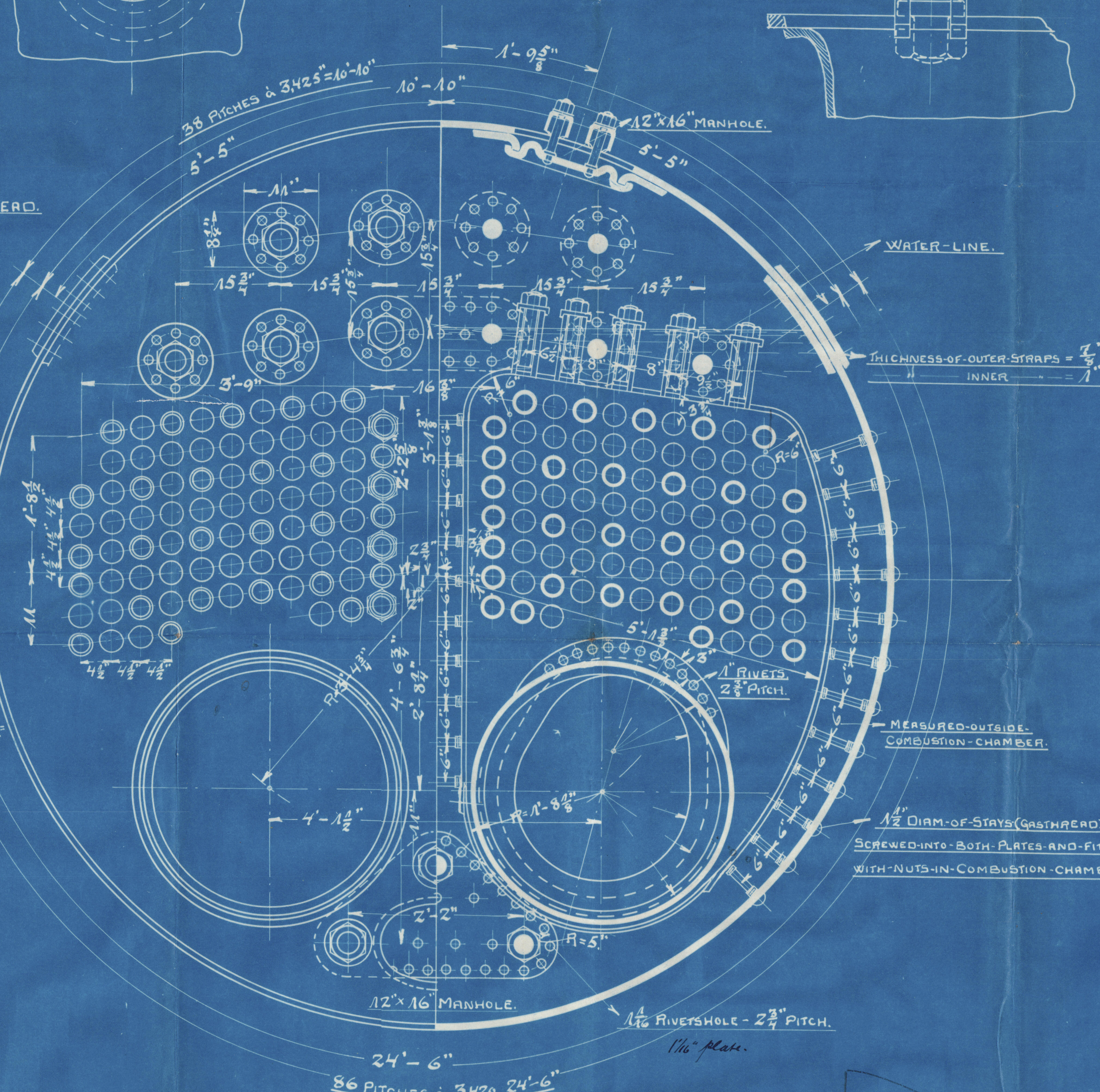
Girder and gird plates.



Manhole- doubling-plate.



1 1/2" DIAM. OF
STAYS, SCREWED
INTO BOTH PLATES
AND FITTED WITH
NUTS IN COMBUSTI-
ON-CHAMBER.



Amended plan of
MAIN BOILERS N^o 1 to 18

to be constructed by
Mts. J. P. H. Hurns
Maskin og Skibsbyggeri.
Aalborg.

Engines by J. S. Frichs

N^o 543, 544, 545



RETAIN

RETAIN