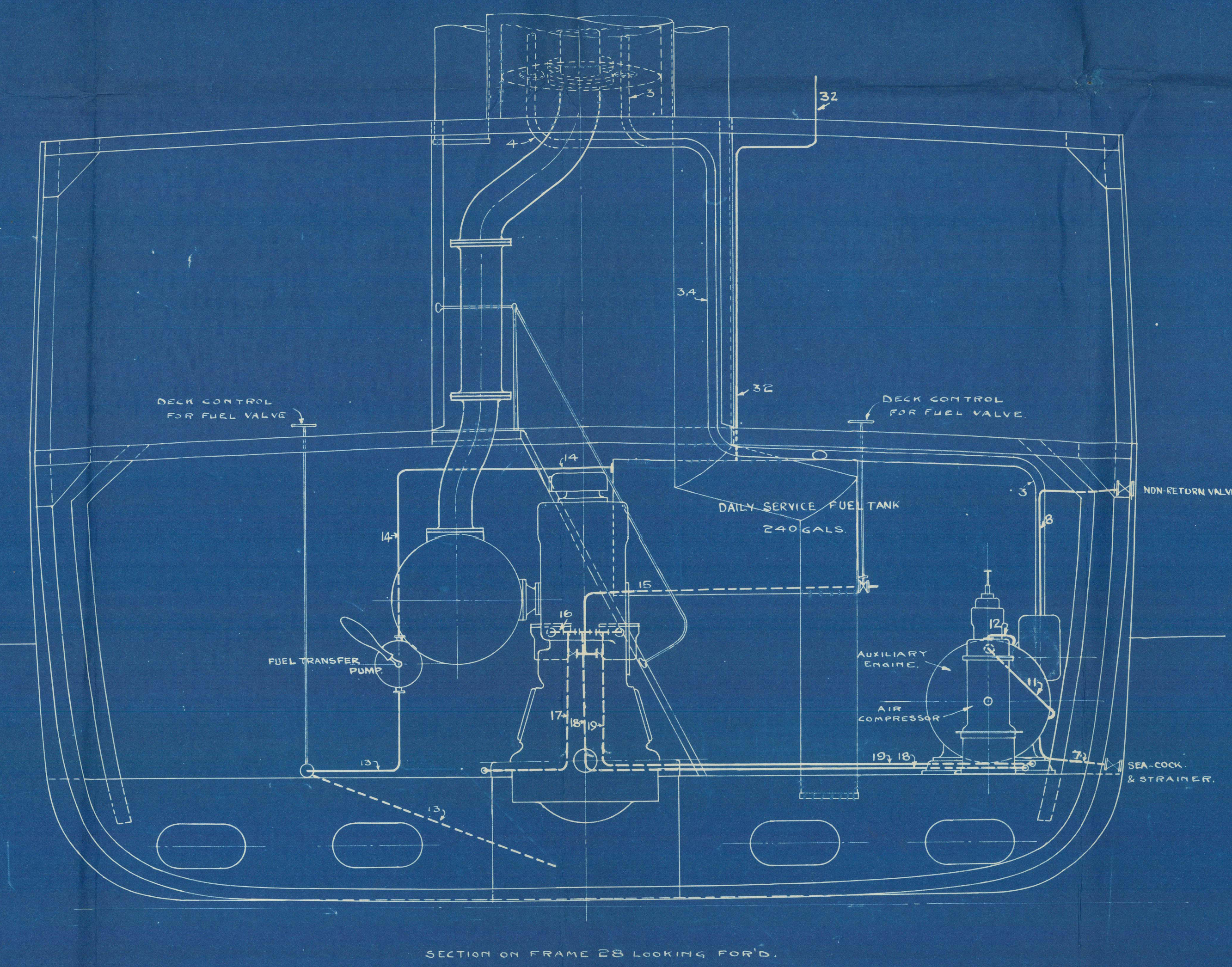
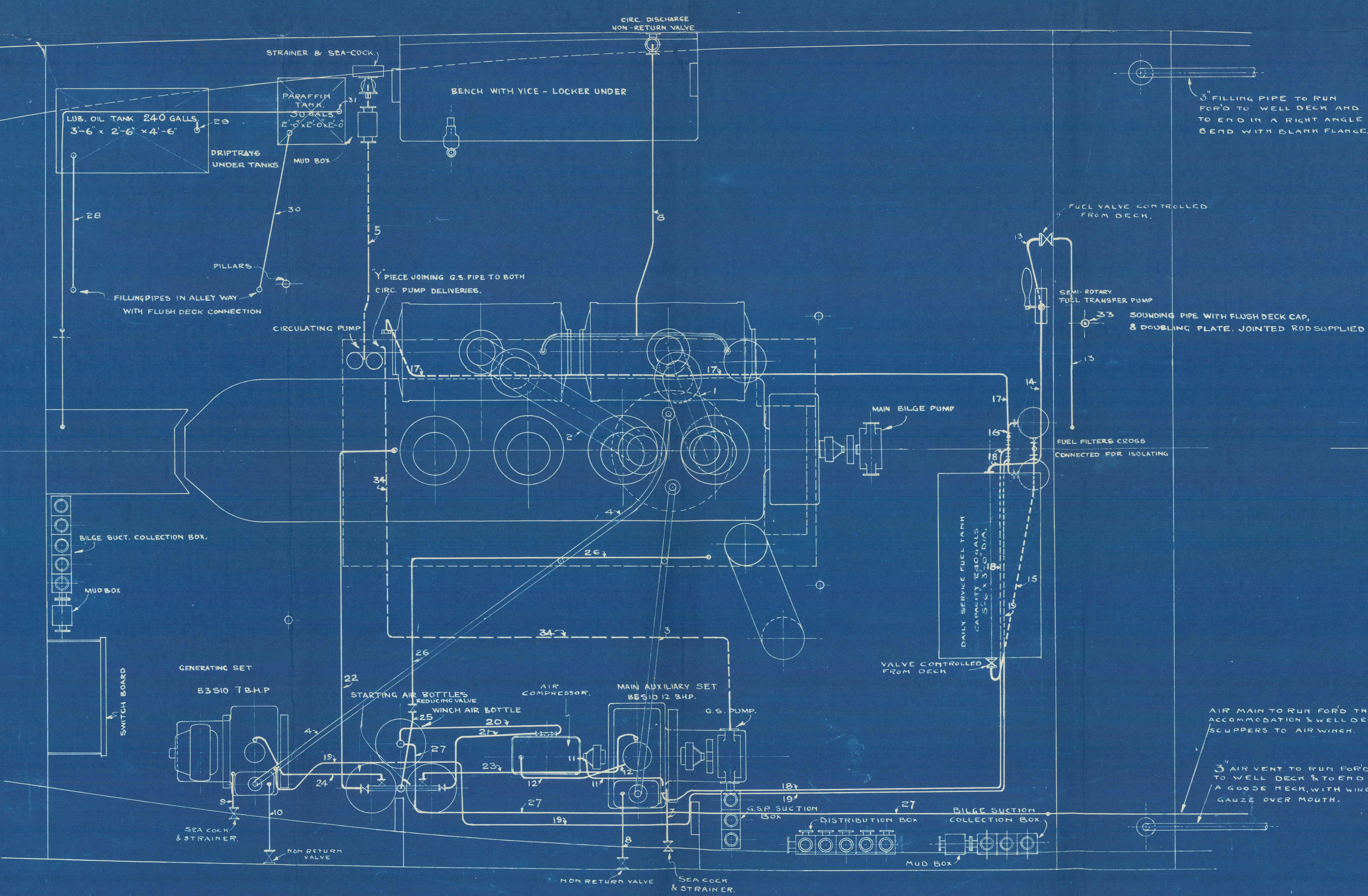
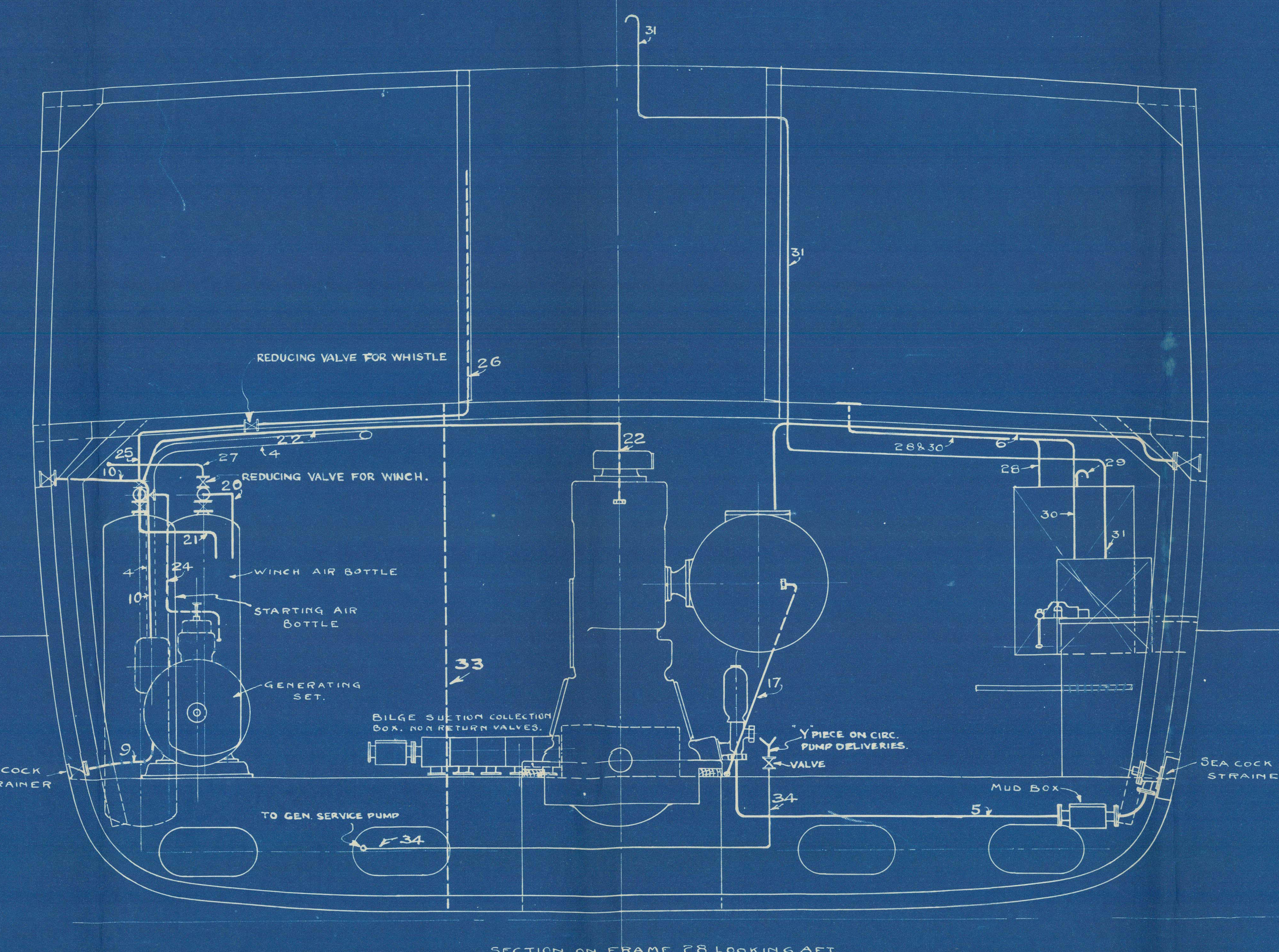
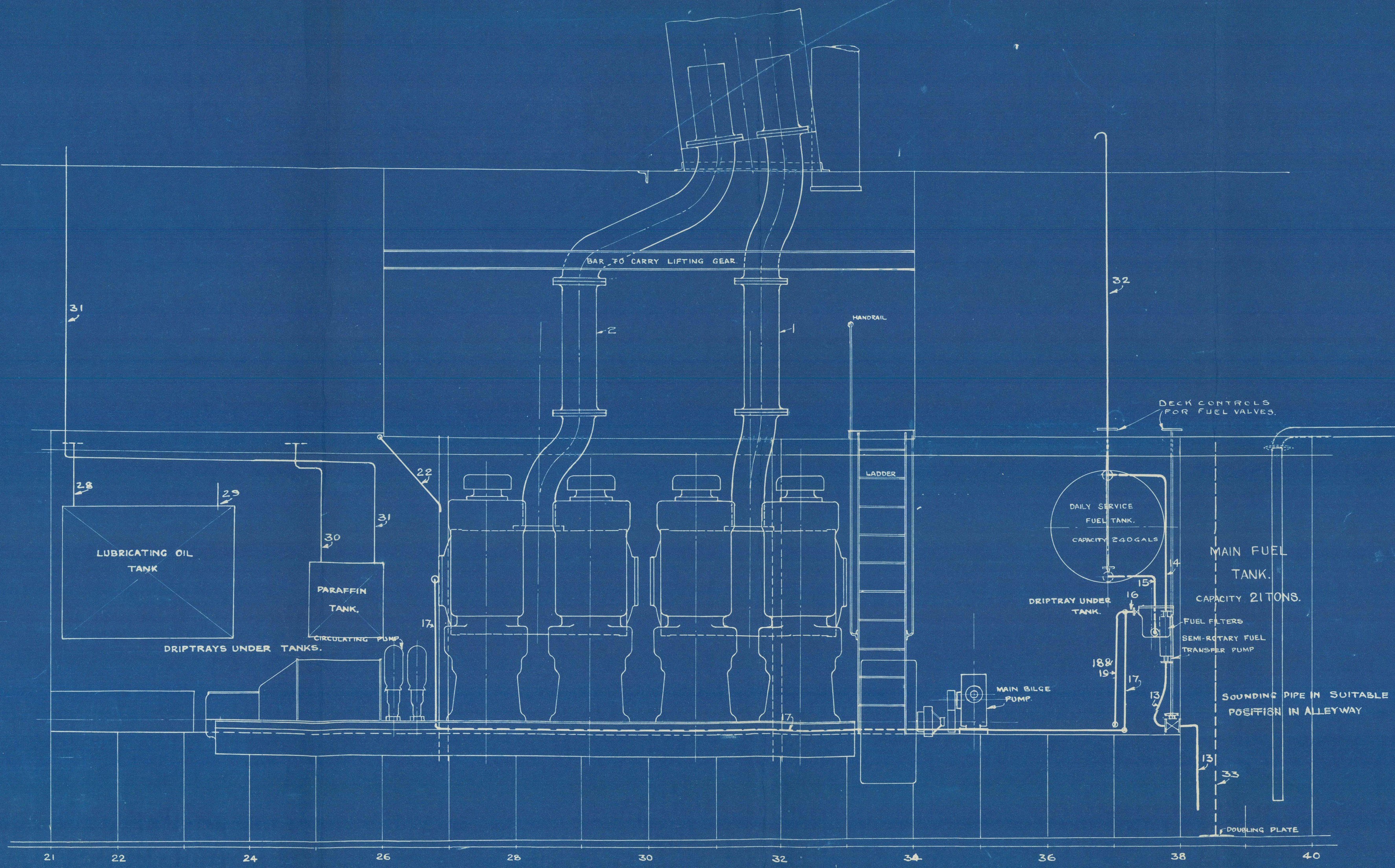


MACHINERY INSTALLATION. SHIP N° 1198.

SCALE $\frac{1}{2}$ " = 1 FT.

MAIN ENGINE 350 BHP BOLINDER. 225 RPM. NELL.
AUXILIARY 12 675
GEN. SET 7 1000



No.	DESCRIPTION	BORE	GAUGE	MATERIAL
1	MAIN ENGINE EXHAUST FORD.	10"	—	W.I. OR STEEL
2	" " " " AFT.	10"	—	"
3	AUX. " " " "	2 1/2"	—	"
4	GEN. SET " " " "	2"	—	"
5	MAIN ENGINE CIRC. SUCT.	2 1/2"	12	COPPER
6	" " " " DISCHARGE	2"	14	"
7	AUX. " " " " SUCT.	3/4"	16	"
8	" " " " DISCHARGE	3/4"	16	"
9	GEN. SET " " " " SUCT.	3/4"	16	"
10	" " " " DISCHARGE	3/4"	16	"
11	CIRC. WATER TO COMPRESSOR FROM AUX. ENG. CIRC. PUMP.	3/4"	16	"
12	" " " " FROM " " TO " " CYLINDER.	3/4"	16	"
13	SEMI-ROTARY PUMP SUCT. FROM MAIN FUEL TANK.	1 1/2"	—	STEEL
14	" " " " DELIVERY TO DAILY SERVICE TANK.	1 1/2"	—	"
15	DAILY SERVICE TANK TO FUEL FILTERS.	1 1/2"	—	"
16	FILTERS COMMON OUTLET.	1 1/2"	—	"
17	FUEL TO MAIN ENGINE.	3/4"	—	"
18	" " " " AUX.	3/4"	—	"
19	" " " " GEN. SET.	3/4"	—	"
20	COMPRESSOR TO WINCH BOTTLES.	1"	14	COPPER
21	" " " " STARTING AIR BOTTLES.	1"	14	"
22	STARTING AIR TO MAIN ENGINE.	1"	14	"
23	" " " " AUX.	1/2"	16	"
24	" " " " GEN. SET.	1/2"	16	"
25	AIR TO REDUCING VALVE FOR WHISTLE.	3/8"	16	"
26	" " " " FROM " " TO " " "	3/8"	16	"
27	AIR WINCH MAIN THRO. REDUCING VALVE.	1 1/2"	—	STEEL
28	LUBRICATING OIL TANK FILLING.	2"	—	GALV. I.
29	" " " " VENT.	1 1/2"	—	"
30	PARAFFIN TANK FILLING.	1 1/2"	—	"
31	" " " " VENT.	1"	—	"
32	DAILY SERVICE FUEL TANK VENT.	1 1/2"	—	"
33	MAIN FUEL TANK SOUNDING PIPE WITH ROD.	1 1/2"	—	"
34	GEN. SERVICE PUMP DELIVERY TO MAIN ENGINE CIRC. SYSTEM.	2 1/2"	—	"

ALL WATER INJECTION & DISCHARGE VALVES TO BE FITTED CLEAR OF BUTTS, LAPS & RUBBING BANDS TO FACILITATE INSPECTION & REMOVAL.
MAIN ENGINE EXHAUST PIPES TO SLIDE THROUGH BOTTOM PLATE OF FUNNEL, & TO BE LAGGED WITH 1" ASBESTOS ROPE. ALL PIPING TO BE SECURELY FIRED TO BEAMS, FRAMES, ETC., BY IRON STRAPS & PROTECTED WITH SHEET METAL GUARDS WHERE NECESSARY.
GUARDS TO BE FITTED OVER SHAFTING & MAIN ENGINE FLYWHEEL.
TANKS, AIR BOTTLES & OTHER SMALL GEAR TO BE ADEQUATELY STRAPPED & CHECKED IN POSITION.

DRAWN BY R.P.M. & L.S.W.
THWICKED BY R.P.M. & L.S.W.
CHECKED BY J.W.S.
DATE 18/10/25
PLAN N° 18110
JAMES POLLOCK, SON & CO. LTD.
SHIPBUILDERS & ENGINEERS,
3 LLOYD AVENUE,
LONDON, E.C.3

Gas Collock Sons & Co. Ltd

Nº 1198

M V "Maimuna"

Machinery Installation.

London 1909.

89629

RETAI
RETAI

5500-0055



© 2021

Lloyd's Register
Foundation