



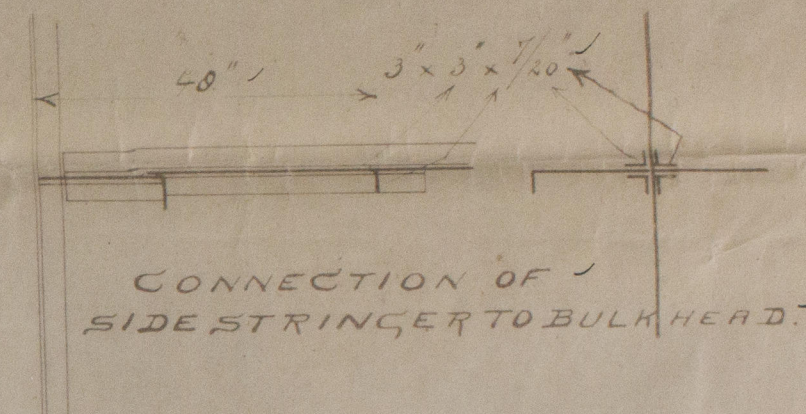
216'-4" x 40'-0" x 14'-2 1/4"

Midship-section. Scale 1:24.

HALF BREADTH	20, 0
DEPTH	15, 02
HALF CIRTH	32, 92
FIRST NUMBER	67, 94
SECOND	$67, 94 \times 216, 334 = 14698$
L : B = 5408	L : D = 14403

EQUIPMENT.

<u>- EQUIPMENT -</u>		
2 STOCKLESS BOWERS	-----	38' 4 CWT EACH. ✓
1 " "	" "	32' 4 " " ✓
1 STREAM ANCHOR WITH STOCK	-----	11 CWT (INC. STOCK) ✓
1 KEDGE	" " " "	5-2-14 (" ") ✓
250 FATHOM 1 1/16" STUD CHAINCABLE	-----	388 CWT ✓
75 " 3/2" CIRC. STEEL WIRE FOR STREAM ANCHOR	-----	✓
90 " 3/4" " " " " TOW LINE	-----	✓
2 x 90 " 3" & 2" " " " ACC SPECIFICATION.	-----	✓



RIVETING

KEEL PLATE TREBLE RIVETED BUTTLAPS FOR $1\frac{1}{4}$ ✓
SHEER STRAKE " " " " " " " " $1\frac{1}{4}$ ✓

ALL REMAINING SHELL PLATING TREBLE RIVETED ✓
BUTTLAPS FOR $\frac{1}{2}$ L. DOUBLE AT ENDS. QUADRUPLE ✓
WHEN OVER RULE BREADTH ✓
FORE-CASTLE PLATING, DOUBLE RIV. BUTTLAPS ✓
UPPER DECK STRINGER PLATE, TREBLE RIV. BUTTLAPS ✓
FOR $\frac{1}{2}$ L. DOUBLE AT ENDS ✓
REMAINING DECK PLATING, DOUBLE RIV. BUTTLAPS IN ✓
WAY OF OILTANKS SINGLE AT ENDS ✓
STRINGER AND TIE PLATE OF FORECASTLE DOUBLE ✓
RIV BUTTLAPS ✓
SEAMS & BUTTLAPS OF OILTIGHT BULKHEADS. ✓
DOUBLE RIV. ✓

TRUE LAPPLING SINGLE RIV. SEAMS, DOUBLE RIV.
BUT LAPS.
BOTTOM PLATE OF CENTRE - BULKHEAD CONTINUOUS -
W/TH DOUBLE RIVETED BUTTLAPS, REMAINING PLATING
INT. COSTAL BETWEEN TRANSVERSE BULKHEADS.



CENTRE KEELSON
IN FORE & AFTERBODY

c B.
28.808



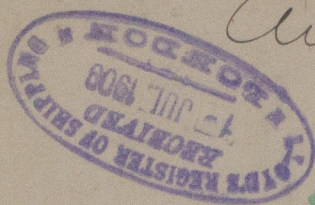
© 2020
Lloyd's Register
Foundation

W1115-0128

Link Barge Limburg
No 999-

Midship Section

Ans 4248



RETAIN

RETAIN



© 2020

Lloyd's Register
Foundation