

2010-2911M

8/2/18

# STEEL BOILERS

SCALE 1 INCH = 1 FOOT

Nº	DESCRIPTION	MINIMUM TENSILE STRENGTH
4	SHELL PLATES	28½ TONS
1	FRONT TOP	26 "
1	FRONT BOTTOM	26 "
1	BACK TOP	26 "
1	BACK BOTTOM	26 "
2	BACK T.P. CENTRE	26 "
2	BACK T.P. WINGS	26 "
2	C.C. WRAPPERS CENTRE	26 "
2	C.C. WRAPPERS WINGS	26 "
2	C.C. BACKS CENTRE	26 "
2	C.C. BACKS WINGS	26 "
20	GIRDERS	28 "
4	SHELL BUTT STRAPS (OUT)	28½ "
4	SHELL BUTT STRAPS (INS)	28½ "
4	MANHOLE COVERS	26 "
1	STEAM SPACE WASHERS	26 "
4	FURNACES	26 "
	STEAM SPACE STAYS	28 "
	SCREWED STAYS	26 "
	RIVETS	27 "

TO LLOYDS SURVEY

% STRENGTH OF PLATE = 85.5

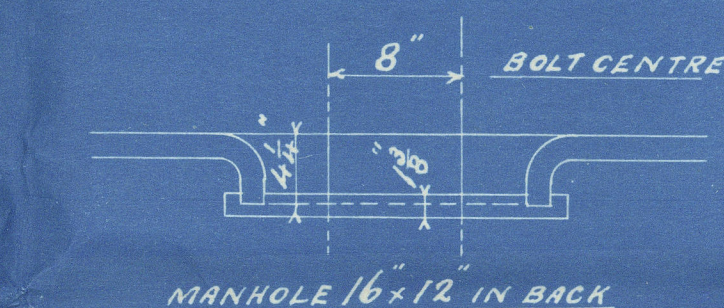
% " " RIVETS = 88.6

LLOYDS =  $\frac{22.58 (21-2) 85.5}{192} = 191 \text{ LBS}$

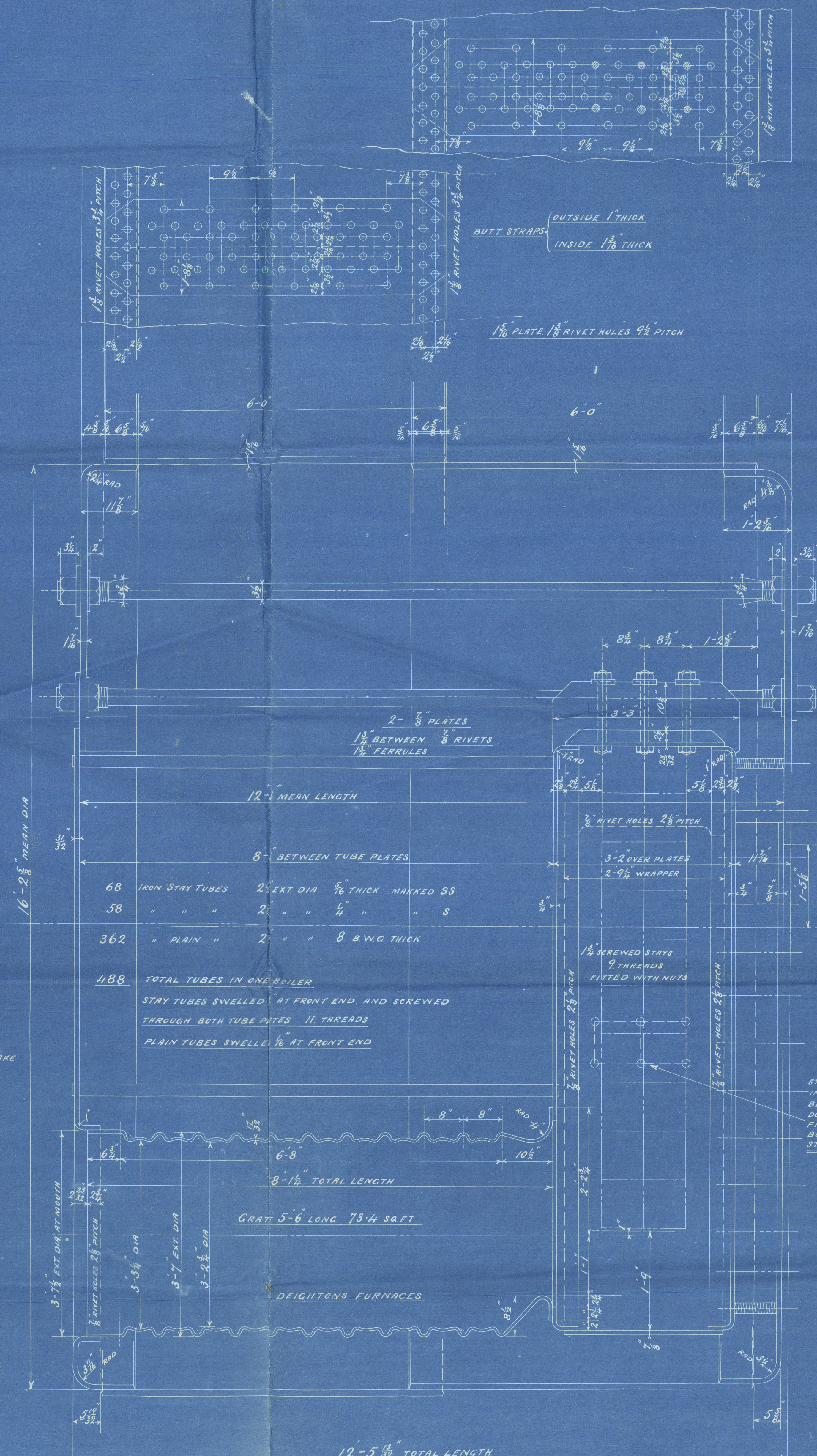
% STRENGTH OF PLATE = 85.5

% " " RIVETS = 89.2

BRITISH CORPORATION =  $\frac{20.4 (21-1) 85.5 \times 28.75}{192 \times 28} = 186 \text{ LBS}$



MANHOLE 16" IN DIA



HEATING SURFACE ON TUBES BETWEEN TUBE PLATES 2634 SQ. FT.

" " ELSEWHERE EXCLUDING F.T. PLATES 541 " "

TOTAL 3175 " " IN ONE BOILER, 9525 SQ. FT. IN 3 BOILERS

WEIGHT OF HOT WATER TO WORKING LEVEL = 29 TONS

STEAM SPACE = 519 CUB. FT.

WORKING PRESSURE 180 LBS. Q"

TEST " 360 LBS. Q"

NOTE: ALL PLATES, STAYS, &c. TO BE OF STEEL. SMOKE TUBES OF IRON.

TENSILE STRENGTH OF SHELL PLATING TO BE FROM 28½ TO 33 TONS

ALL HOLES DRILLED IN PLACE AFTER PLATES ARE BENT

STAYS NEXT TO SHELL IN WING CORRUGATIONS TO BE IN POSITION SHOWN DOTTED TO FACILITATE FITTING OF STAYS THROUGH BUTT STRAPS STAYS 1½ DIA. 9 THRS

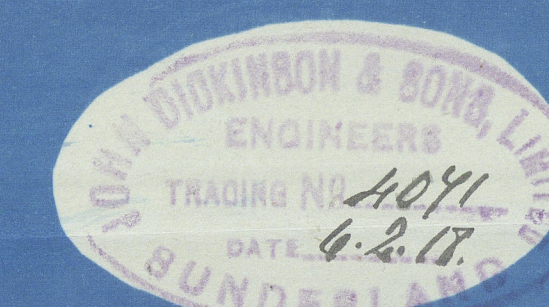
STAYS MARKED THUS ○ 1½ DIA. 9 THRS

" " " ○ 2½ DIA. 9 "

ALL OTHERS 1½ DIA. 9 "

ALL STAYS SCREWED INTO PLATES AND

FITTED WITH NUTS



S33 - S34

3, THUS EACH CONTRACT



# SUNDERLAND

J. DICKINSON & SONS LP

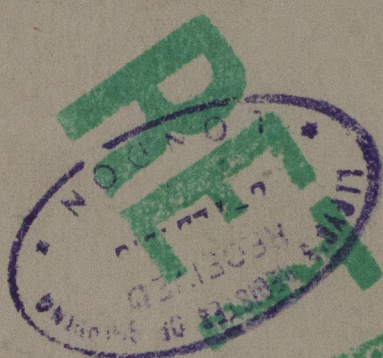
(3) BOILERS N<sup>o</sup> 834

W.P. = 180 LBS

TYPE "F"

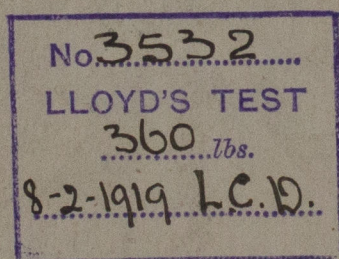
(WITH SHELL PLATE IN TWO LENGTHS)

J. T. THOMPSON & SONS' S/S N<sup>o</sup> 527

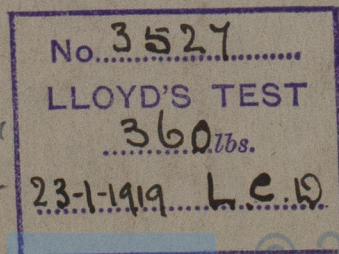


Note:- only one of the above boilers were fitted in this vessel. Two similar boilers N<sup>o</sup> 833 were also fitted.

Mark on the boiler N<sup>o</sup> 834:-



Mark on the two boilers N<sup>o</sup> 833:-



"Bosworth"

EX

War Period

SUNDERLAND RPT. NO. 27456

Lloyd's Register Foundation

W1762-0102