

8/16/16
LONDON

LONGITUDINAL SEAMS.

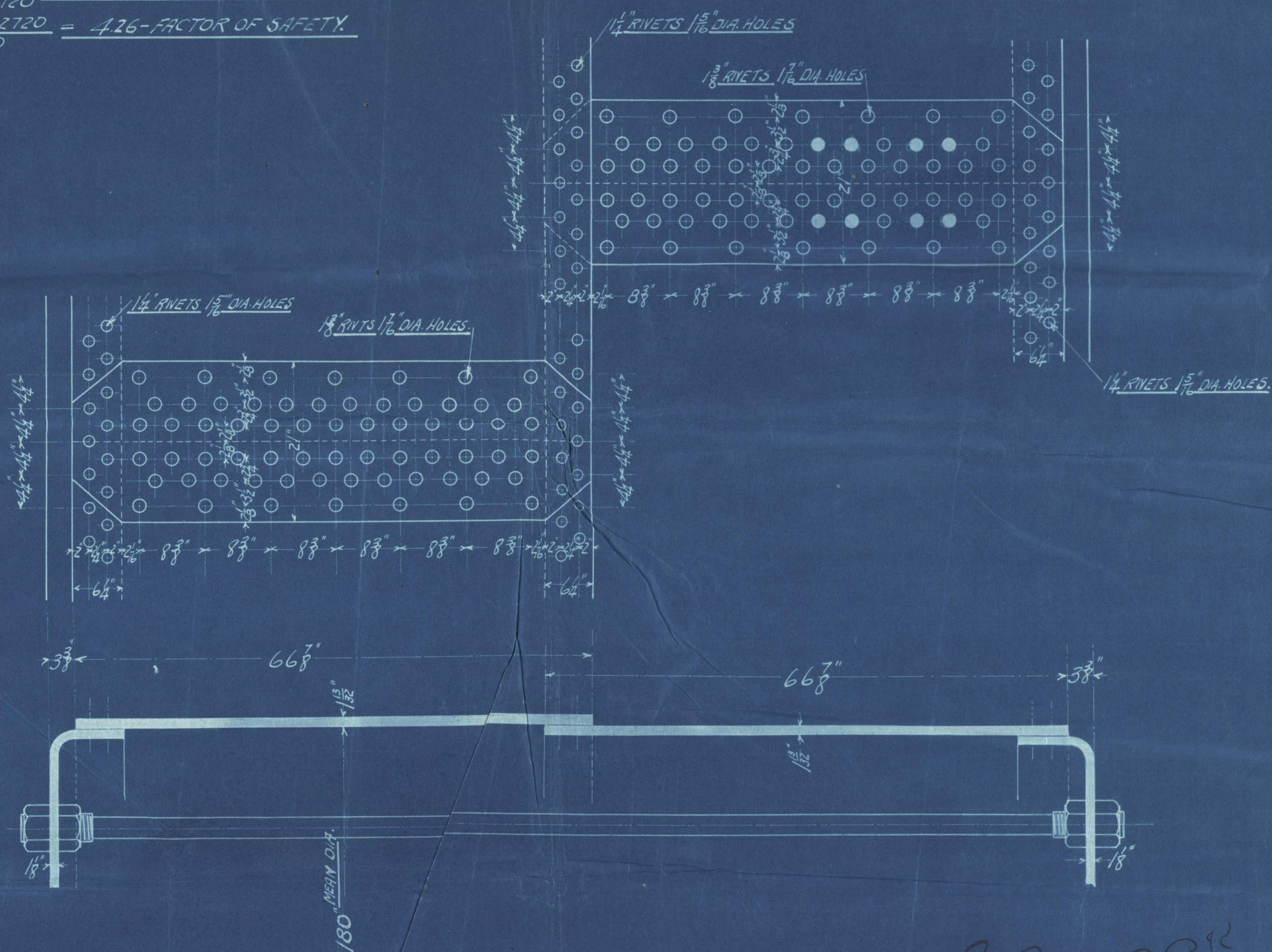
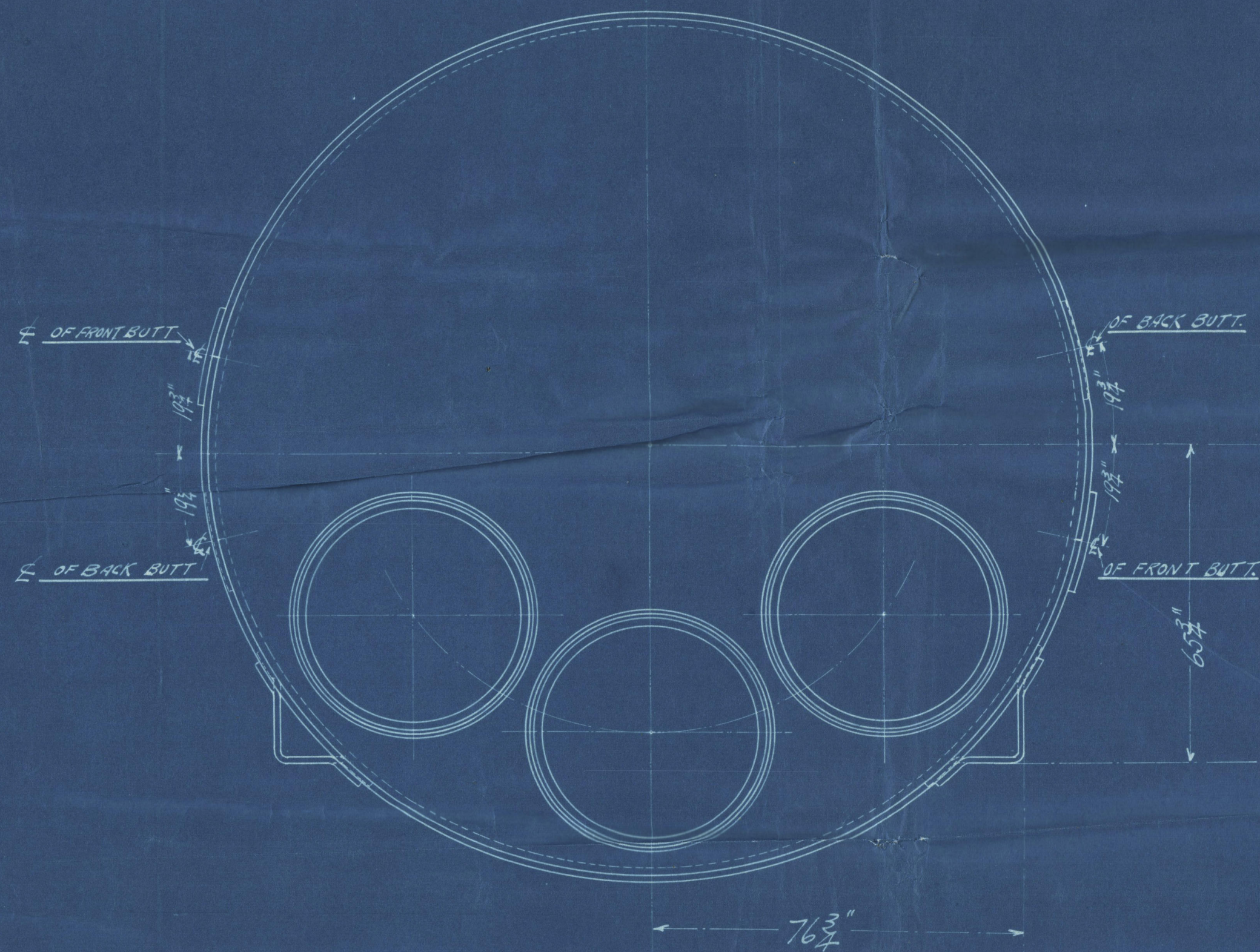
SHELL - $1\frac{3}{8}$ " - I.S. BUTTSTRAPS, $1\frac{3}{8}$ " O.S. BUTTSTRAPS $1\frac{1}{8}$ "

RIVETS - $1\frac{3}{8}$ " HOLES - $1\frac{7}{16}$ "

$\frac{8\frac{3}{8} - 1\frac{7}{16}}{8\frac{3}{8}} \times 100 = 82.6\%$ - STRENGTH OF PLATE.

$\frac{10 \times 1.623 \times 58240}{8\frac{3}{8} \times 1.406 \times 62720} \times 100 = 128\%$ - STRENGTH OF RIVET.

$\frac{82.6 \times 1.406 \times 62720}{90 \times 190} = 4.26$ - FACTOR OF SAFETY.



SCOTCH BOILER - 15'0" DIA. - 11'0" LONG.			
SHELL PLATE ALTERATION.			
SCALE $1\frac{1}{2}" = 1'$		DATE MAY 19 1916	
ENGINEERING DEPARTMENT			
STATEN ISLAND SHIPBUILDING CO.			
PORT RICHMOND, N. Y.			
EXAMINED	APPROVED	DATE	REMARKS
5-23-16	5-22-16		
1. BOILER #504 TEMA C#4		ALTERATION TO DRAWING #3425-A MAY 19 1916	
2. BOILER #503 TEMA C#4		ALTERATION TO DRAWING #3425-A MAY 19 1916	
3. BOILER #502 TEMA C#4		ALTERATION TO DRAWING #3425-A MAY 19 1916	
4. BOILER #501 TEMA C#4		ALTERATION TO DRAWING #3425-A MAY 19 1916	
5. BOILER #500 TEMA C#4		ALTERATION TO DRAWING #3425-A MAY 19 1916	
6. BOILER #504 TEMA C#4		ALTERATION TO DRAWING #3425-A MAY 19 1916	
No. OFF. FOR	CHARGE TO	DATE	
HOLL N			

Ans. 8.6.16
S. 6.16