

W 1/28

S.S. 53-54.  
Cargo Steamer 3400 ts. dw.  
Longitudinal-Section.  
Scale 1:100.

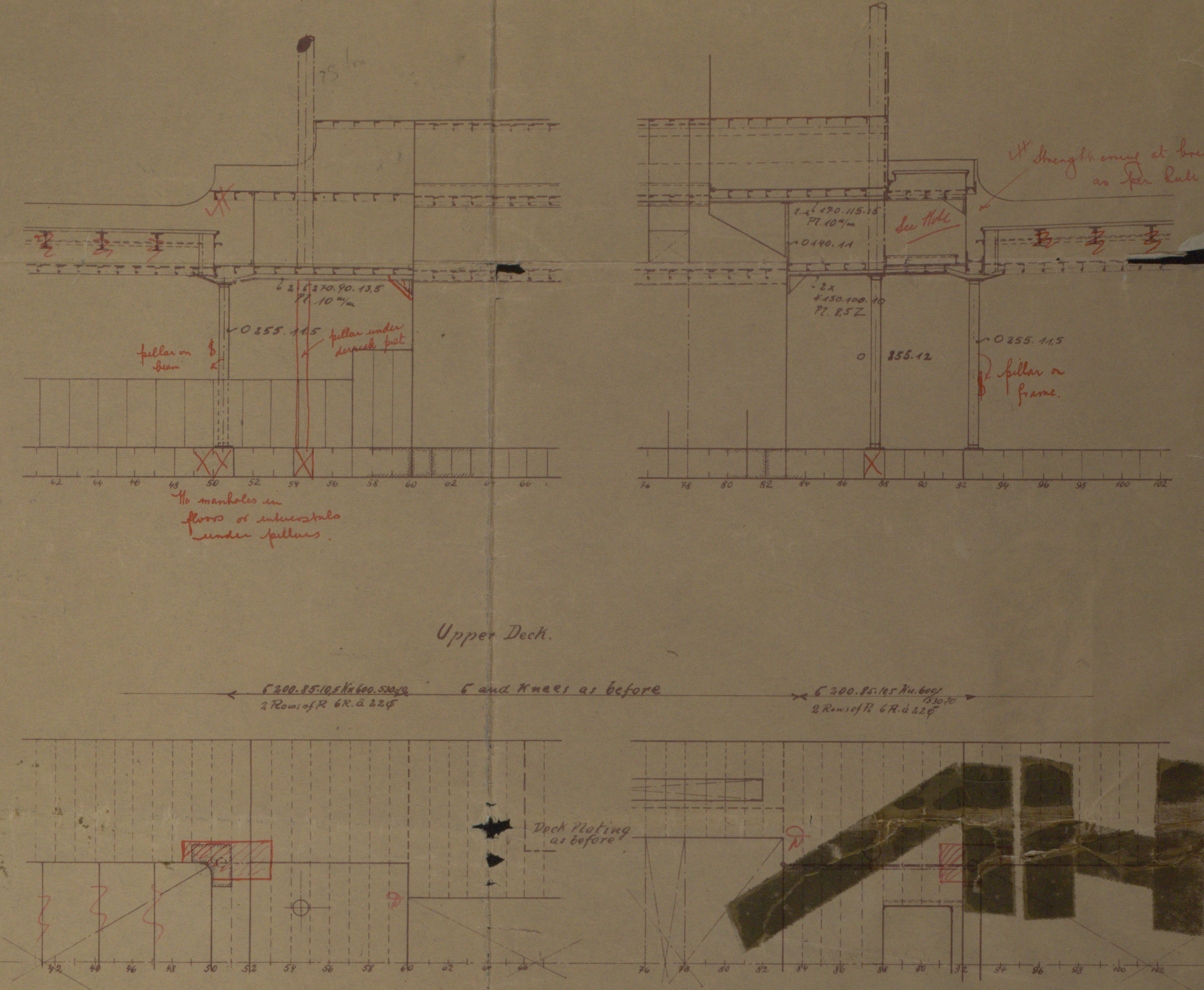
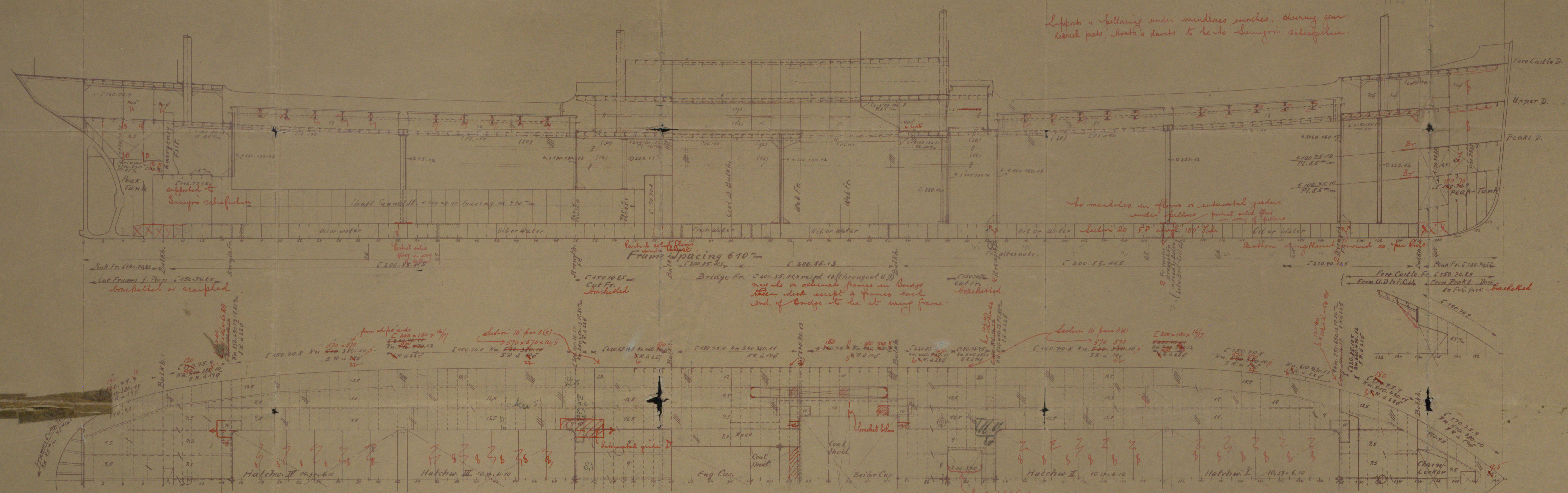
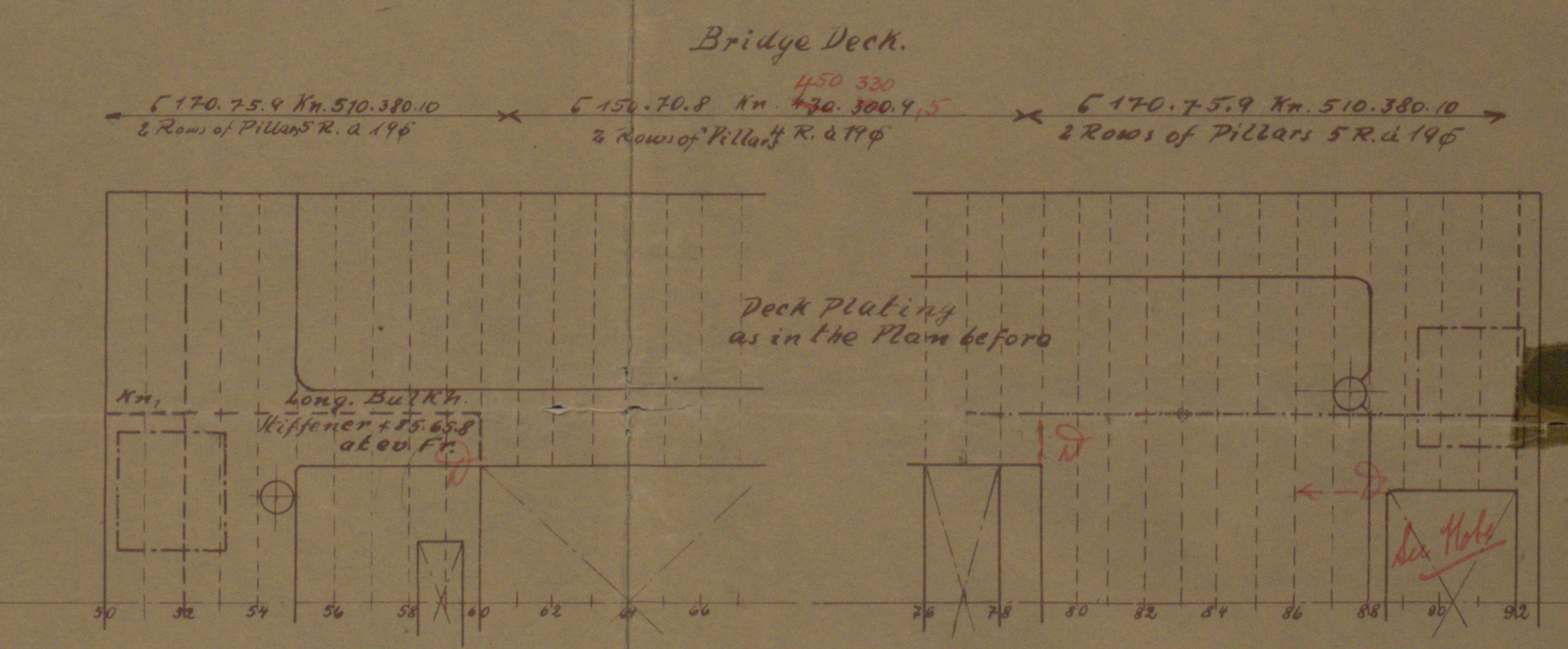
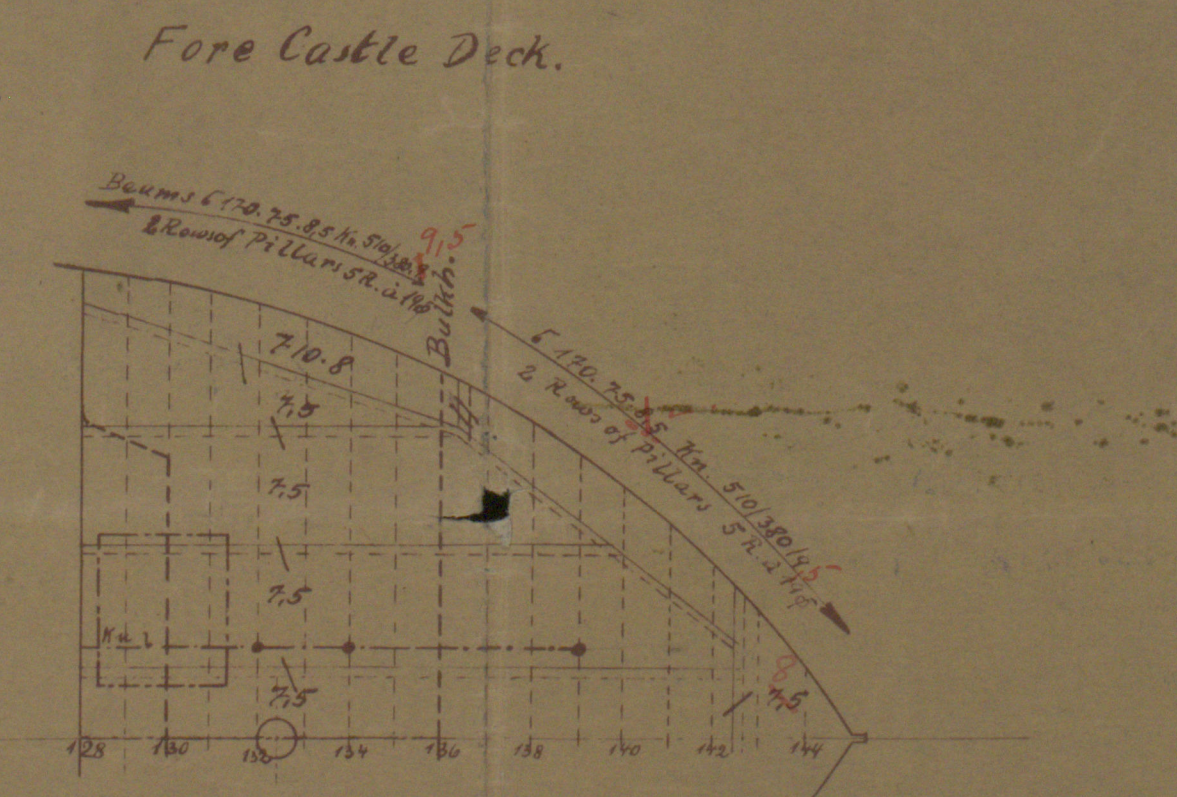
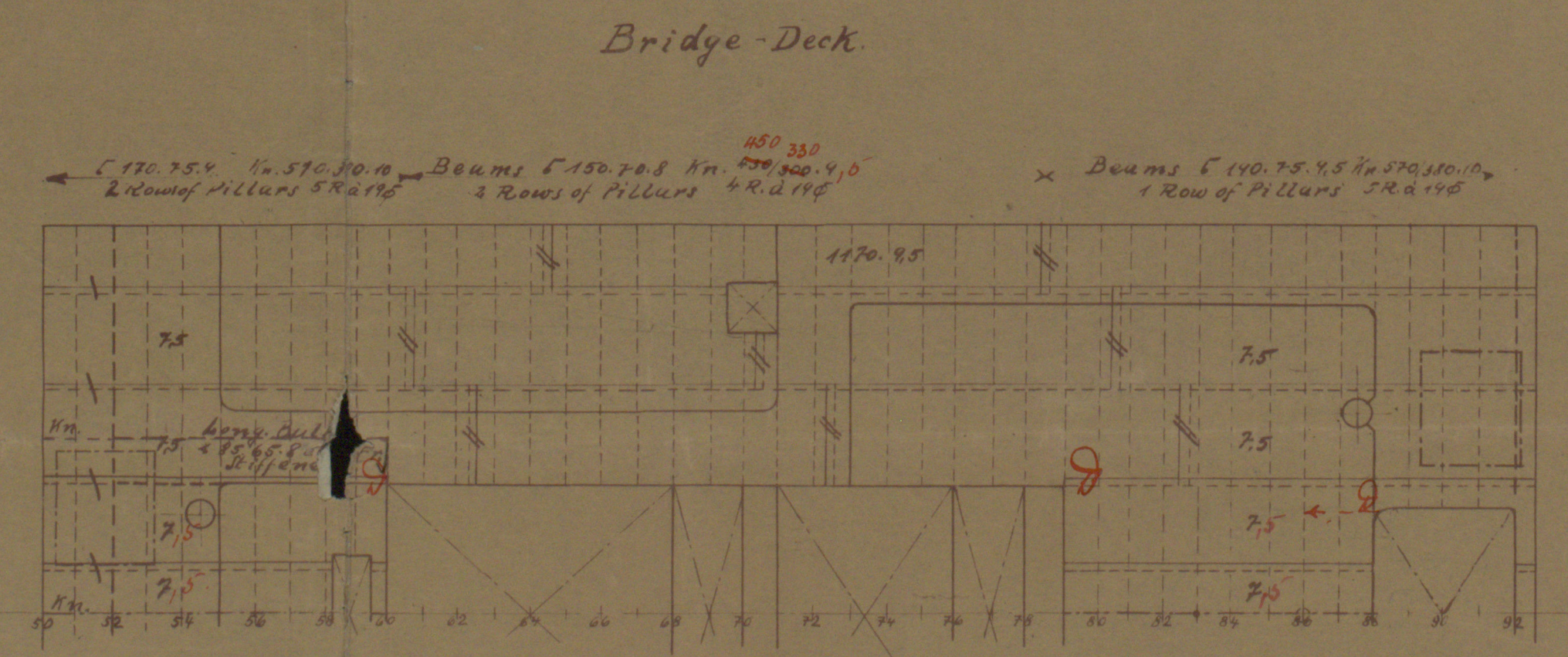
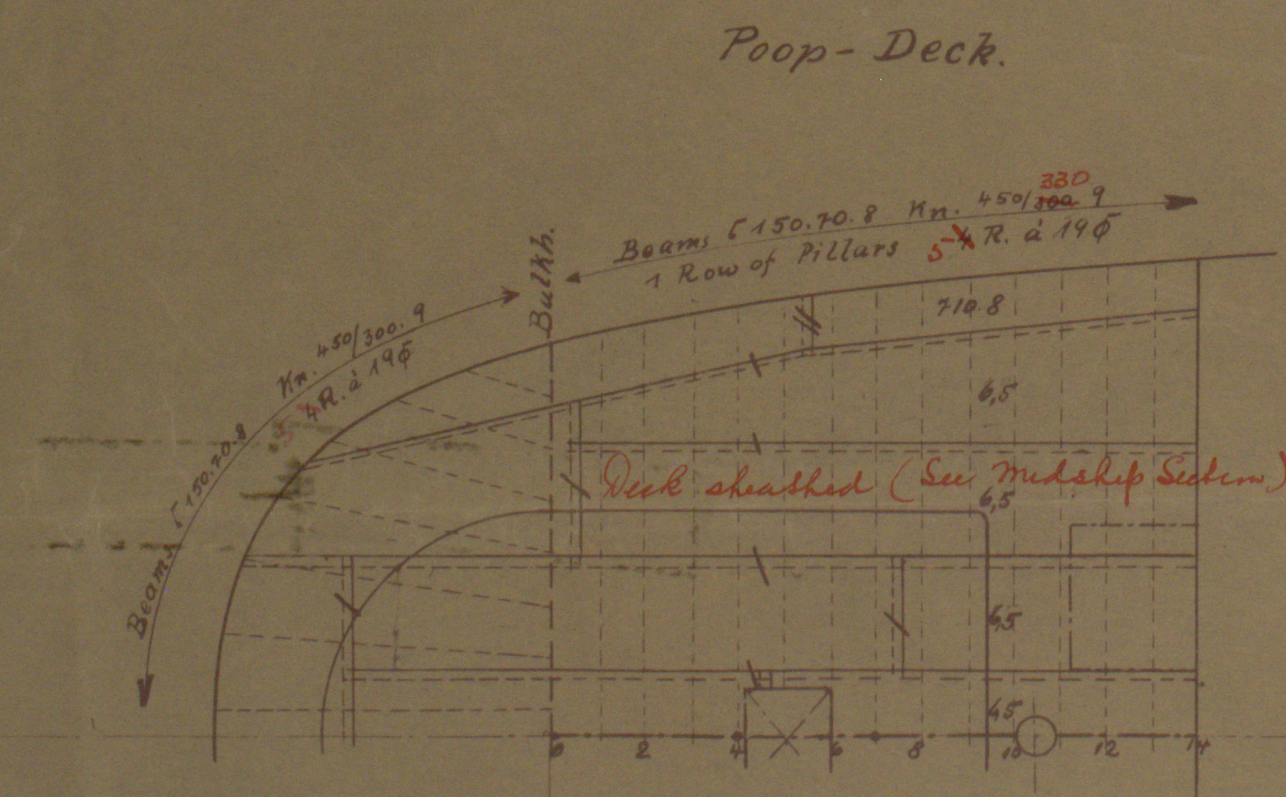
Principal Dimensions.

Length (L) = 281.40 m.  
Breadth moulded (B) = 13.870 m.  
Depth Br.D. (D) = 6.250 m.  
Depth Br.D. (D) = 6.535 m.

Class: Lloyds Register of Shipping 100 A1.  
Scantling Numerals.

D = 6.250  
L/D = 55.1500  
L(B+D) = 177.5388  
L/D = 14.12  
L/D Br.D. = 10.35  
D = 5.36

Alternative Proposal.  
(Pillar and End Beamings  
From 50 193, 3030 - from C.L.)



S. 53/54.  
St. 4.



53/54

Nordvanger. +  
Dng. 671.

WS 237

The International S. & E. Co. Ltd.,  
Darrig,

Steamers Nos 53 & 54

Profile & Decks

Approved: 24. 2. 28.

W1191 -0078



© 2020

Lloyd's Register  
Foundation



53/4

