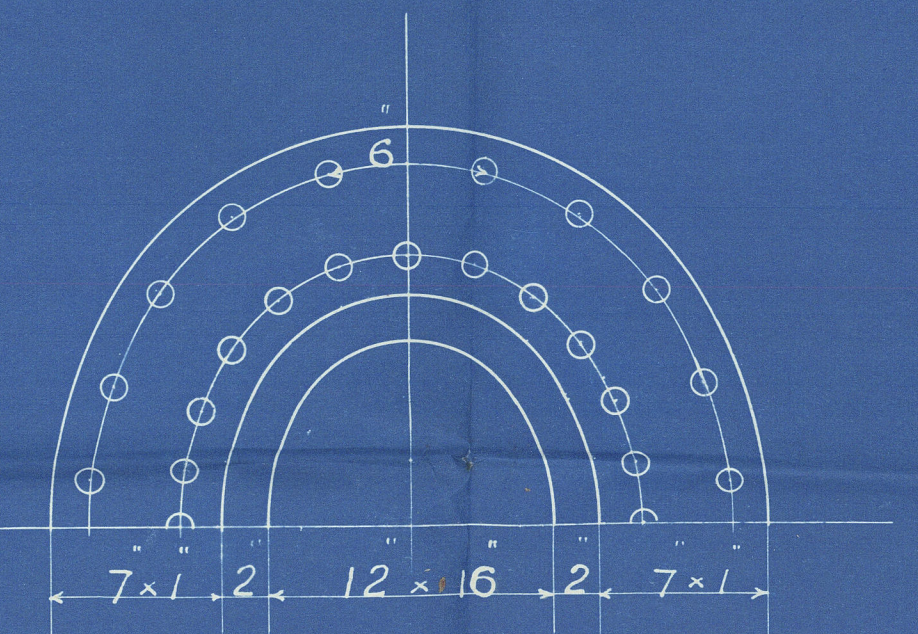


6085. 6087

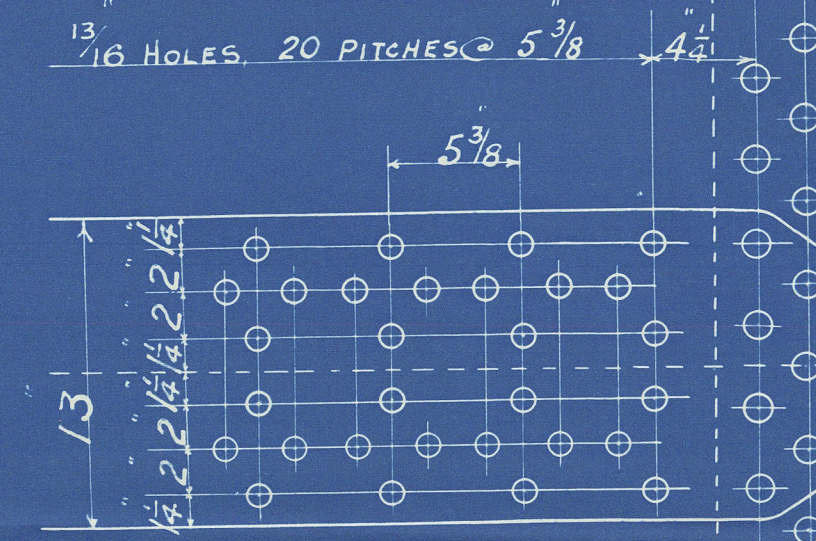
SPECIFICATION OF MATERIALS

SHELL & STRAPS 29 TO 33 TONS.  
GIRDERS & MAIN STAYS 28 " 32 "  
BALANCE OF PLATES, RIVETS & SCREW STAYS 26 " 30 "



MANHOLE RING RIVETING  
44 HOLES. 15/16 DIA. ABT. 2 3/4 P AT INNER ROW.

SHELL RIVETING  
PLATE % = 84.88  
RIVET % = 83.38

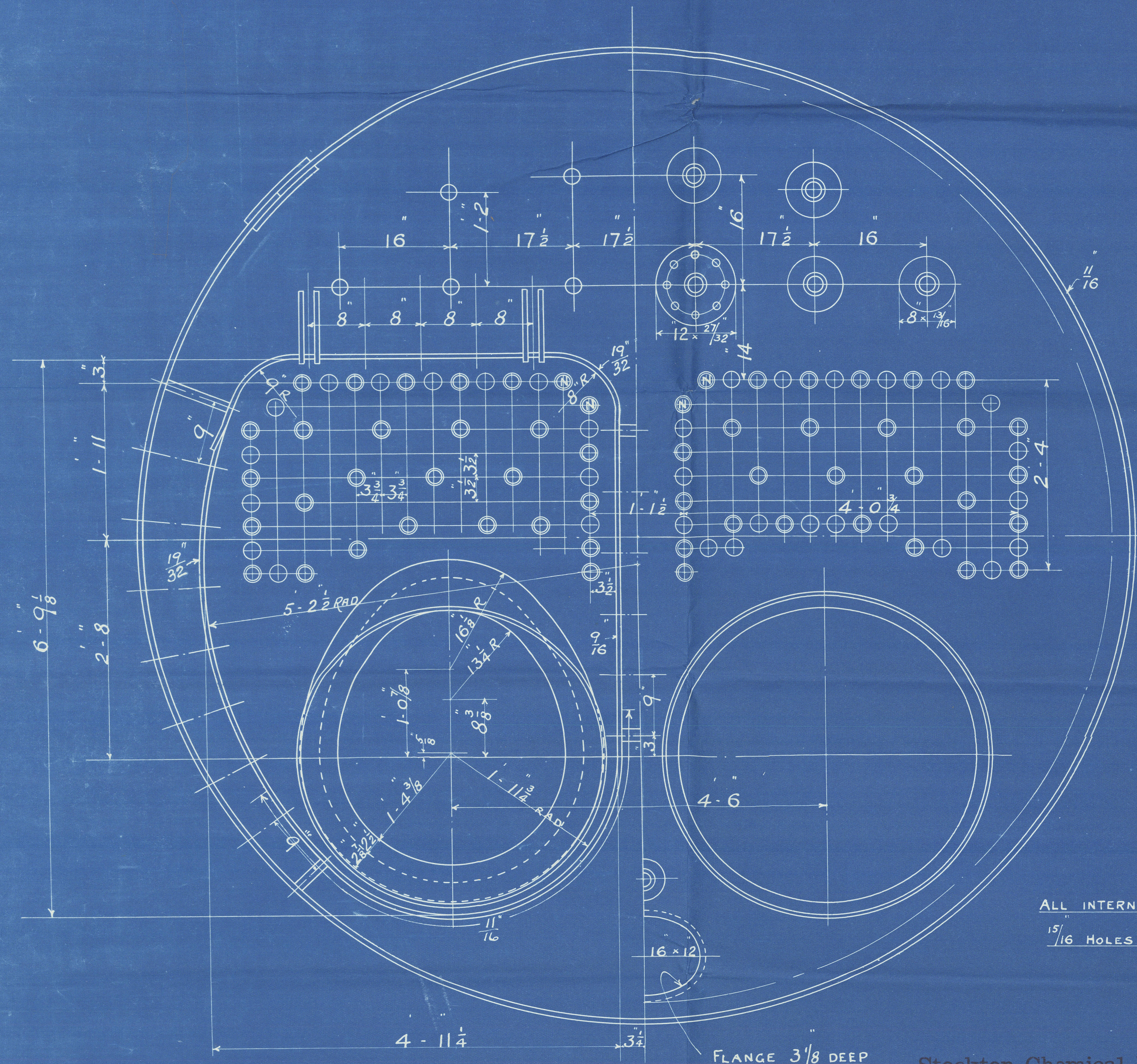


OUTER BUTT STRAP 9/16 THICK  
INNER " " 1/16 "

CIRCUM. SEAMS 1 1/8 H 3 3/8 P DOUBLE RIVETING  
CONTINUOUS, BELOW E OF FURNACE

PLATE % = 68.51  
RIVET % = 45.45

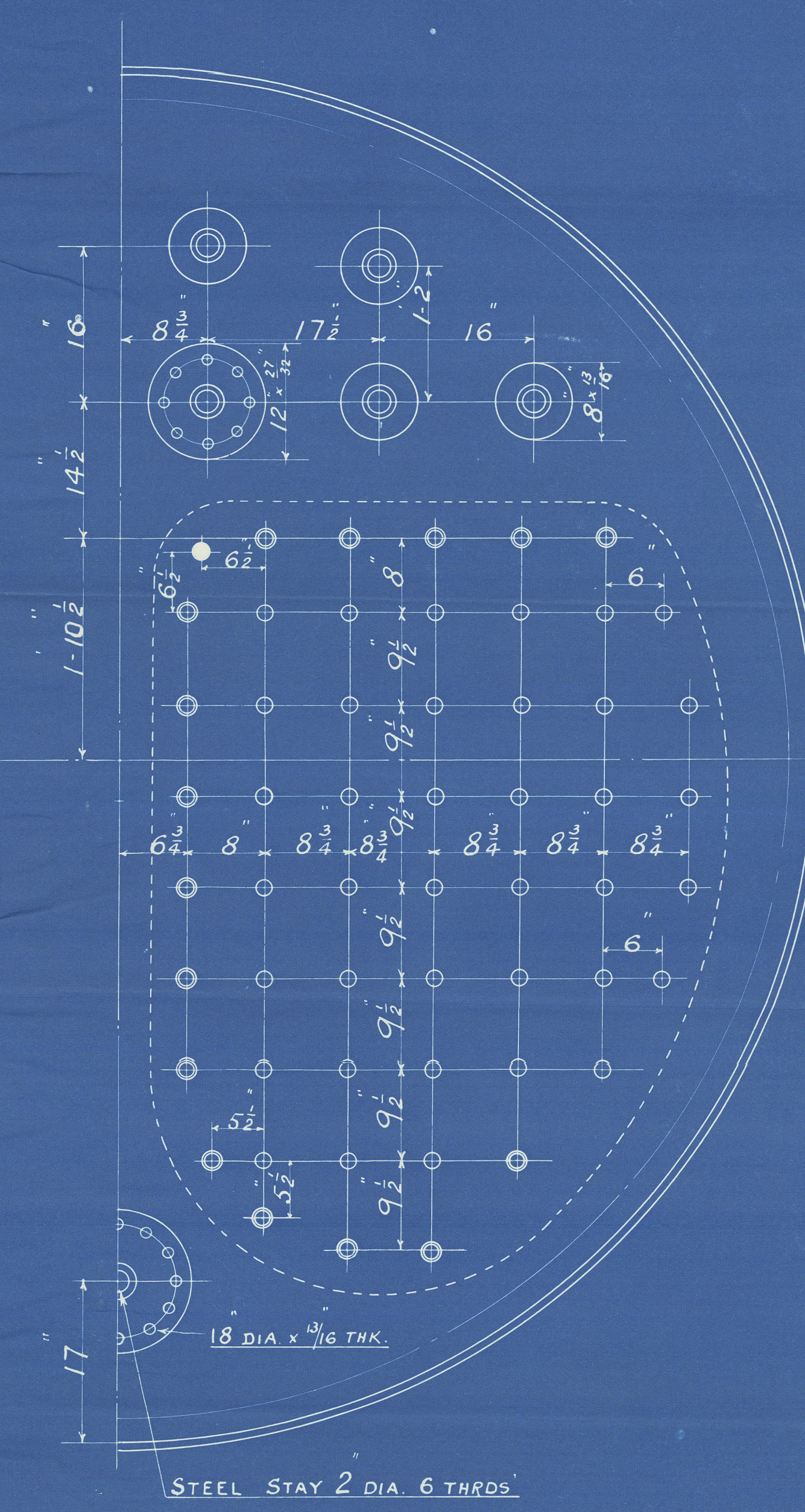
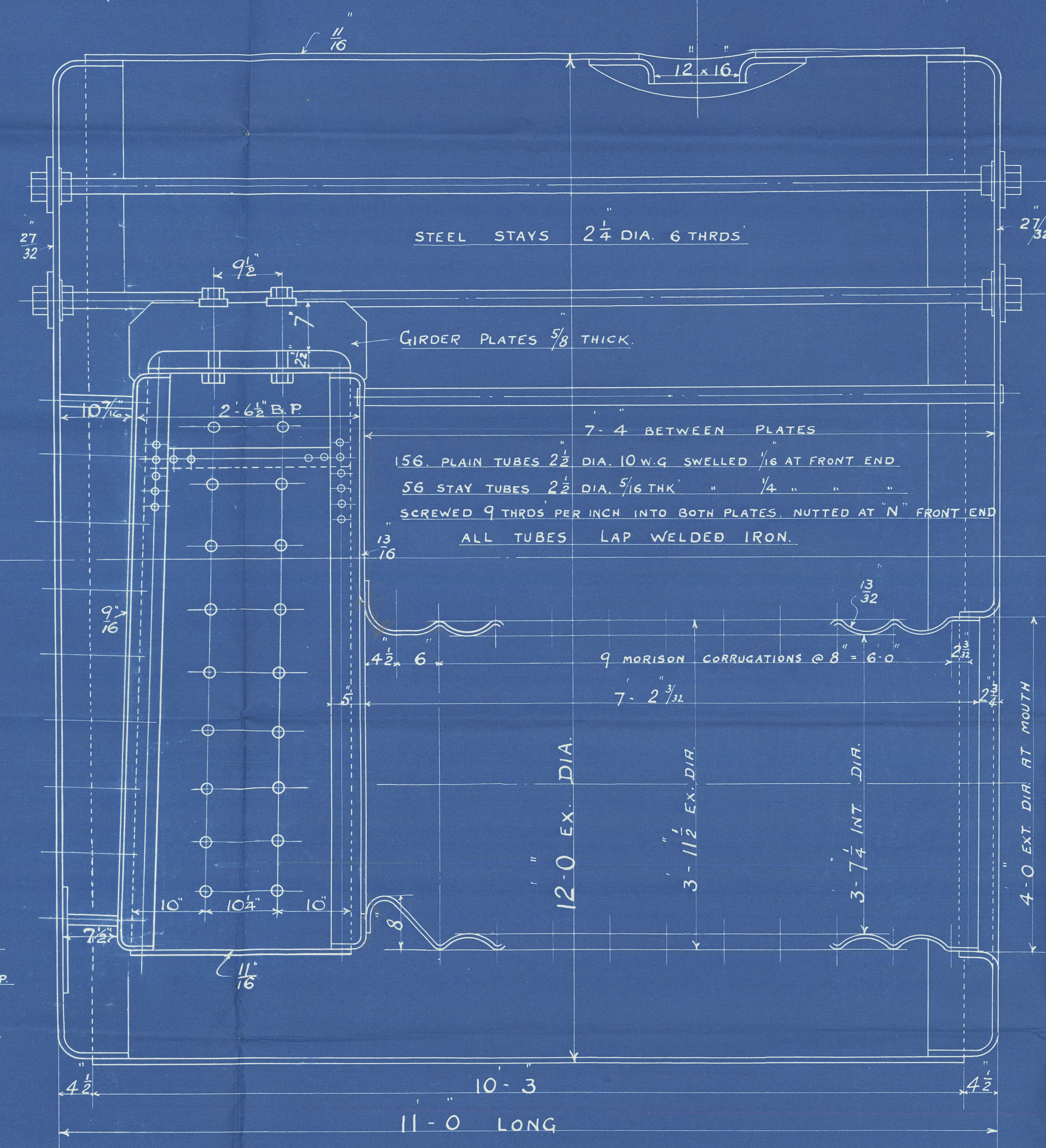
COMBUSTION CHAMBER SCREW STAYS  
SCREWED 9 THRS. P.I. NUTTED AT ENDS  
AT BACK MARK O 1/2 DIA.  
" " " O 1/8 "  
" " " O 1/4 "  
" SIDES 1/2 "  
IN GIRDERS 1/8 "



ALL INTERNAL RIVETING  
15/16 HOLES, 2 1/8 P. 3 LAP.

FLANGE 3 1/8 DEEP

Stockton Chemical Engineers  
& Riley Boilers Ltd.  
Stockton-on-Tees.



HEATING SURFACE - 1390. SQ. FT.  
INCLUDING ALL FURNACES & C.C. PLATES AS FOR OIL FIRED.

STEEL BOILER 12-0 DIA, 11-0 LONG, 120, LBS, W.P. LLOYDS

431.B

AMENDMENTS			DRAWN BY	DATE
MADE	DESCRIPTION	DATE		
1	ALTERATION TO C.C. PLATES	29/1/14	W.H.L.	29/1/14
			CHECKED BY	
			PASSED BY	

W1197. 0162



Stockton Cal.  
Ripley & Riley  
Blue Sea

W1197-0162

No 6087.

duplicate of  
No 6085 -

for

W. Dorland & Son

Main in Beile

B. No. 6087.

No. 6869.

LLOYD TEST

230lbs.

W. P. 120lbs.

4.1.35. P.T.B.

Mdb RPT No. 15300.

28



© 2020

Lloyd's Register  
Foundation