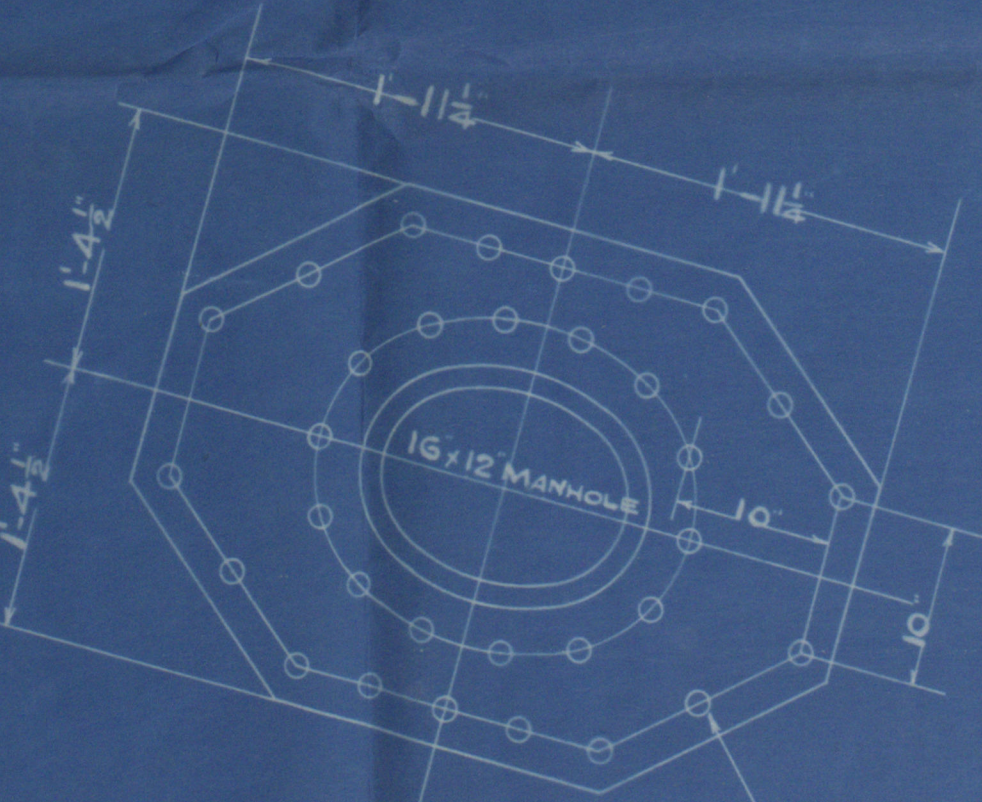


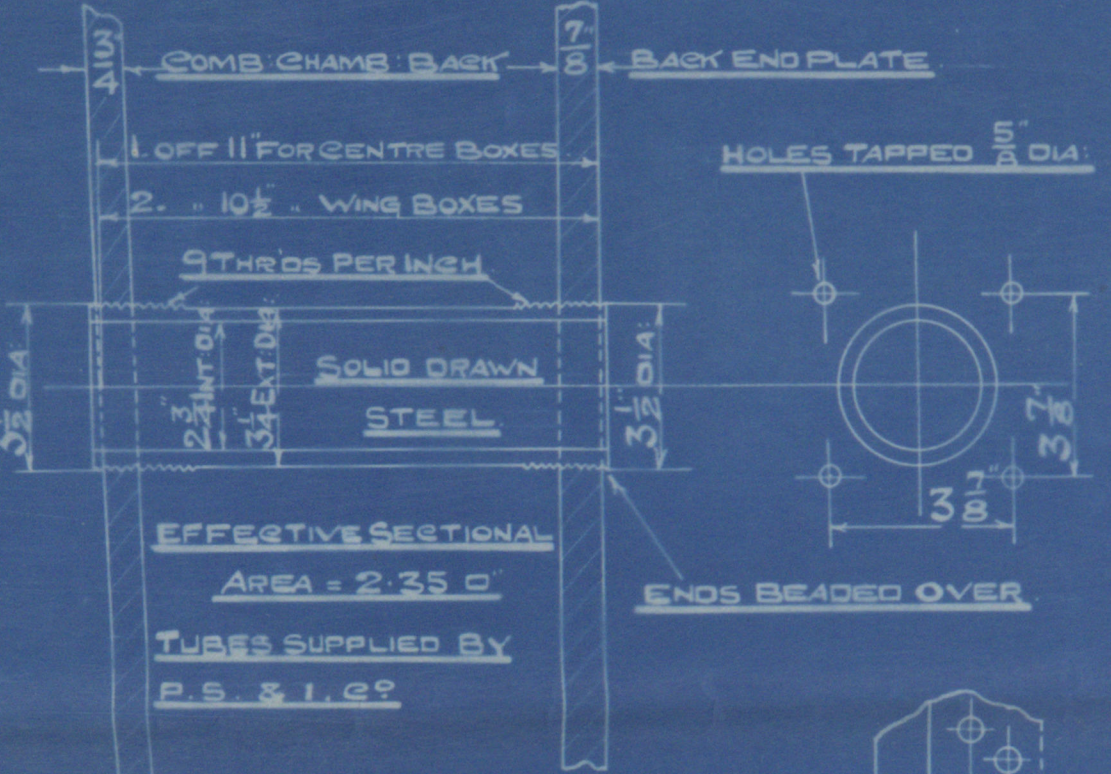
3" DIA STAYS SCREWED
9 THREADS PER INCH

1 1/2" DIA STAYS IN WAY
OF BUTT STRAPS



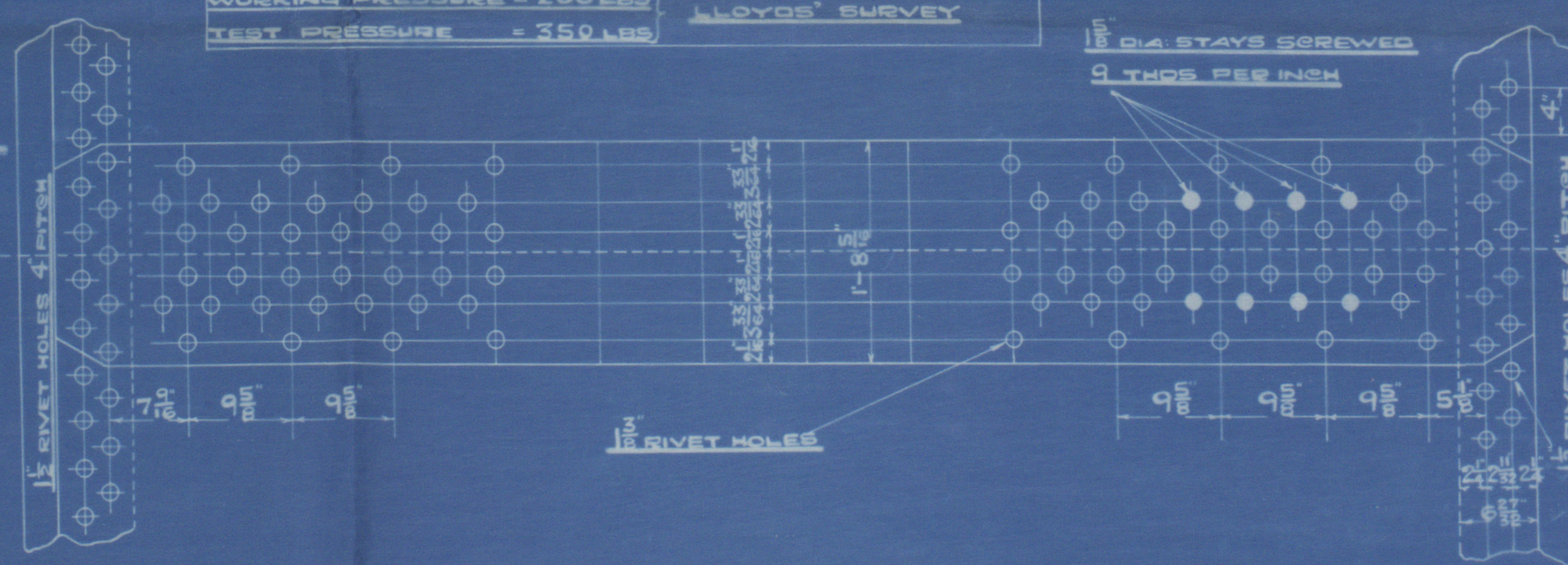
32- 1 1/2" RIVET HOLES
1/2" COMPENSATION PLATE

VIEW OF WING COMB CHAMBER



DETAIL OF TUBES FOR PARRY'S STEAM
BLOWERS

HEATING SURFACE		
334 TUBES 3 EXT DIA X 8'-3" B. T. P.	=	2164 sq
FURNACES	=	159 sq
COMBUSTION CHAMBERS	=	210 sq
FRONT TUBE PLATE	=	42 sq
BACK	=	46 sq
TOTAL 1 BOILER	=	2621 sq
TOTAL 3 BOILERS	=	7863 sq
GRATE SURFACE 5'-9" BARS	=	63 sq (OIL FUEL ONLY)
WORKING PRESSURE = 200 LBS	LOYD'S SURVEY	
TEST PRESSURE = 350 LBS		



1 1/2" DIA STAYS SCREWED
9 THREADS PER INCH

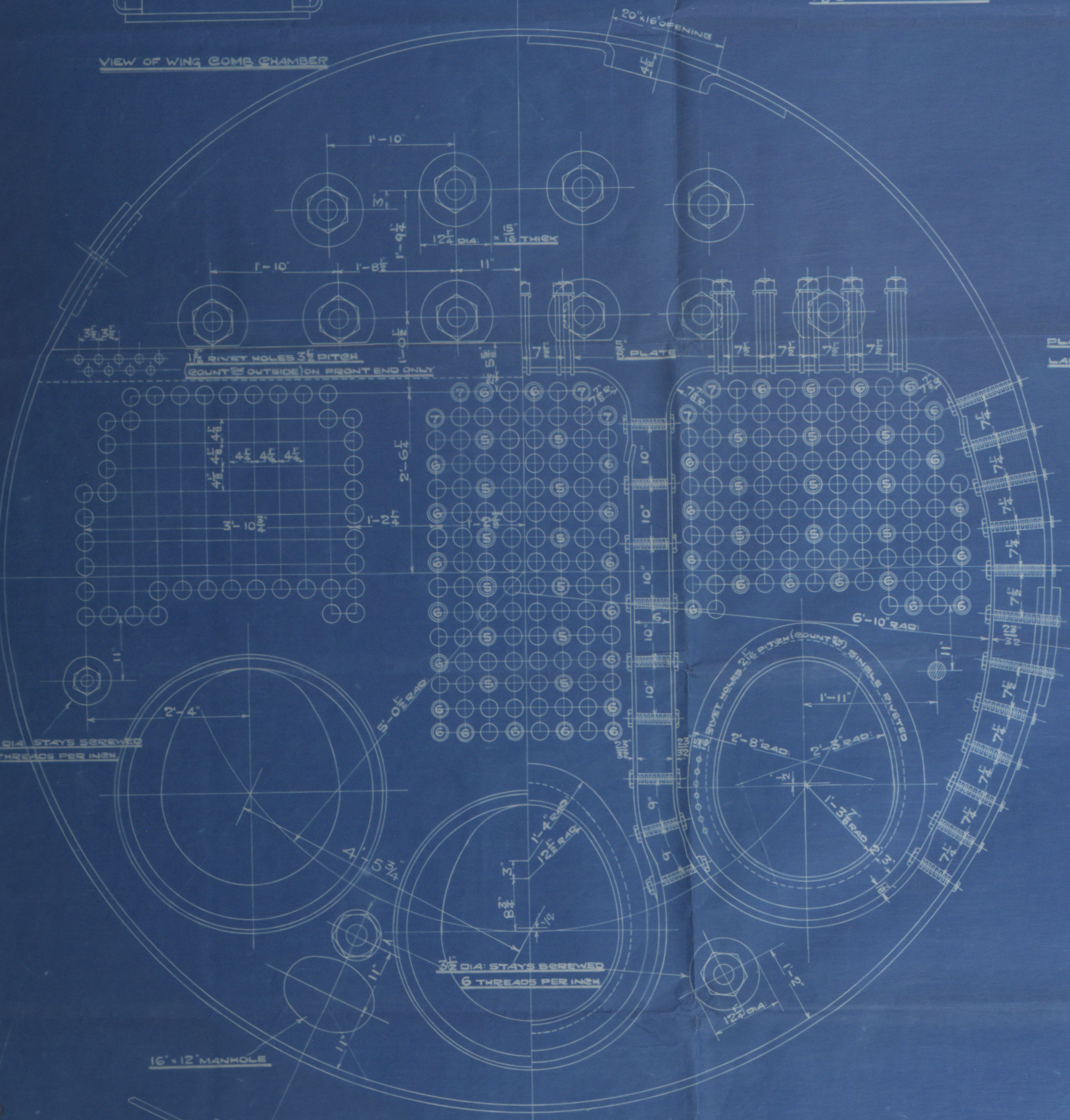
SHELL RIVETING
DOUBLE BUTT STRAP JOINTS
SHELL PLATES 1/2" THK. INNER BUTT STRAPS 1/2" THK. OUTER BUTT STRAPS 1/2" THK.
RIVET HOLES 1 1/2" DIA. GREATEST PITCH 9"
PLATE SECTION 85.7% RIVET SECTION 86.4%
TENSILE STRENGTH OF SHELL PLATES & BUTT STRAPS 28 TO 32 TONS/SQ. IN.
FURNACES & COMB. CHAMBER PLATES 26 TO 32 TONS/SQ. IN.
MANHOLE RINGS 26 TO 30 TONS/SQ. IN.
BINDER PLATES 28 TO 32 TONS/SQ. IN.

NOTE:-
ALL PLATE EDGES PLANED & ALL HOLES TO BE DRILLED IN PLACE.

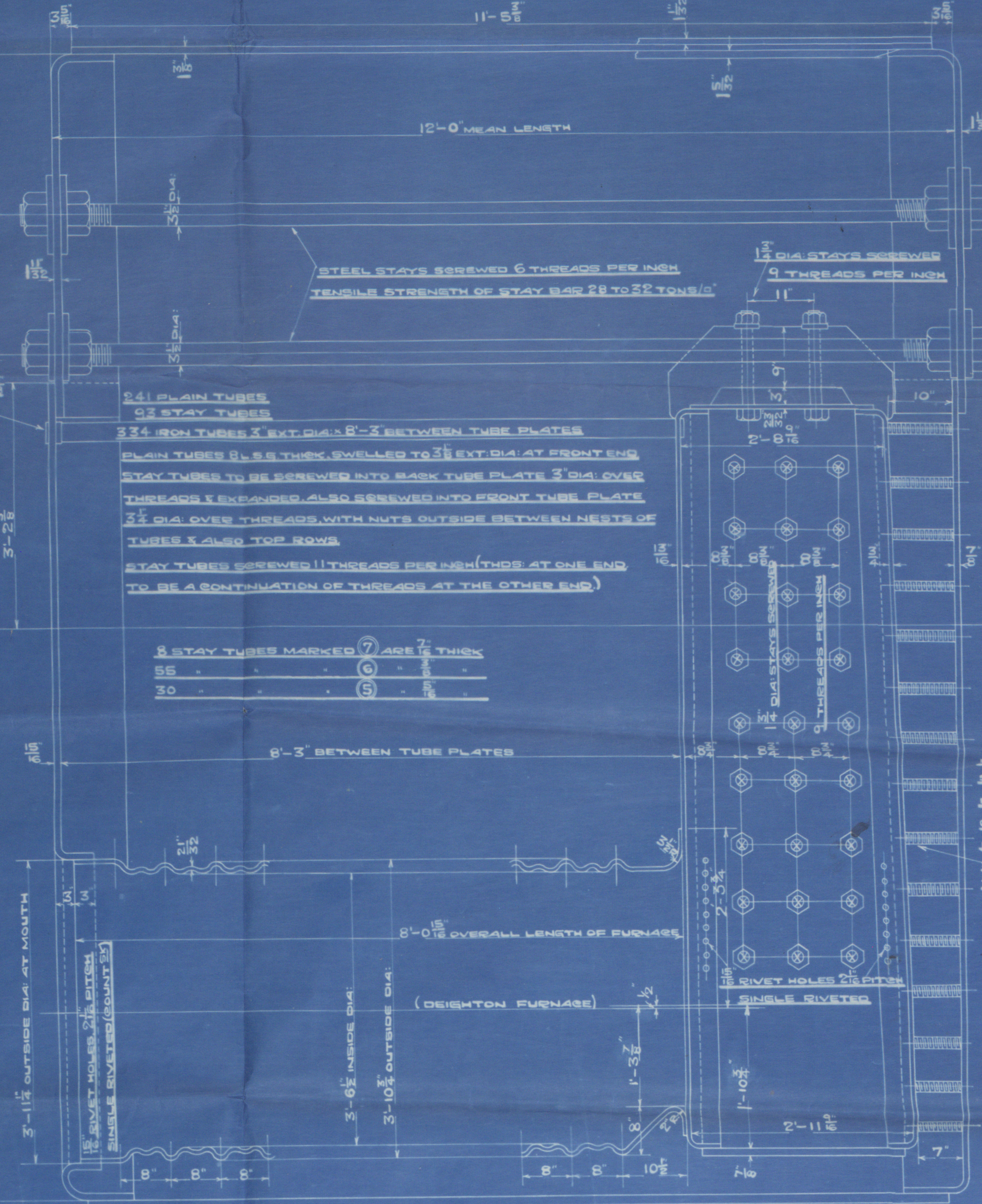
ALL COMBUSTION CHAMBER SCREWED STAYS SCREWED 9 THDS PER INCH & NUTTED AT EACH END WHERE SHOWN.

COMBUSTION CHAMBER STAYS MARKED THIS WAY ARE 2" DIA. NUTS 1" DEEP.

1"	1 1/2"	2"	3"	4"	5"	6"	7"	8"	9"	10"	11"	12"	13"	14"	15"	16"	17"	18"	19"	20"	21"	22"	23"	24"	25"	26"	27"	28"	29"	30"	31"	32"	33"	34"	35"	36"	37"	38"	39"	40"	41"	42"	43"	44"	45"	46"	47"	48"	49"	50"	51"	52"	53"	54"	55"	56"	57"	58"	59"	60"	61"	62"	63"	64"	65"	66"	67"	68"	69"	70"	71"	72"	73"	74"	75"	76"	77"	78"	79"	80"	81"	82"	83"	84"	85"	86"	87"	88"	89"	90"	91"	92"	93"	94"	95"	96"	97"	98"	99"	100"
----	--------	----	----	----	----	----	----	----	----	-----	-----	-----	-----	-----	-----	-----	-----	-----	-----	-----	-----	-----	-----	-----	-----	-----	-----	-----	-----	-----	-----	-----	-----	-----	-----	-----	-----	-----	-----	-----	-----	-----	-----	-----	-----	-----	-----	-----	-----	-----	-----	-----	-----	-----	-----	-----	-----	-----	-----	-----	-----	-----	-----	-----	-----	-----	-----	-----	-----	-----	-----	-----	-----	-----	-----	-----	-----	-----	-----	-----	-----	-----	-----	-----	-----	-----	-----	-----	-----	-----	-----	-----	-----	-----	-----	-----	-----	-----	-----	------



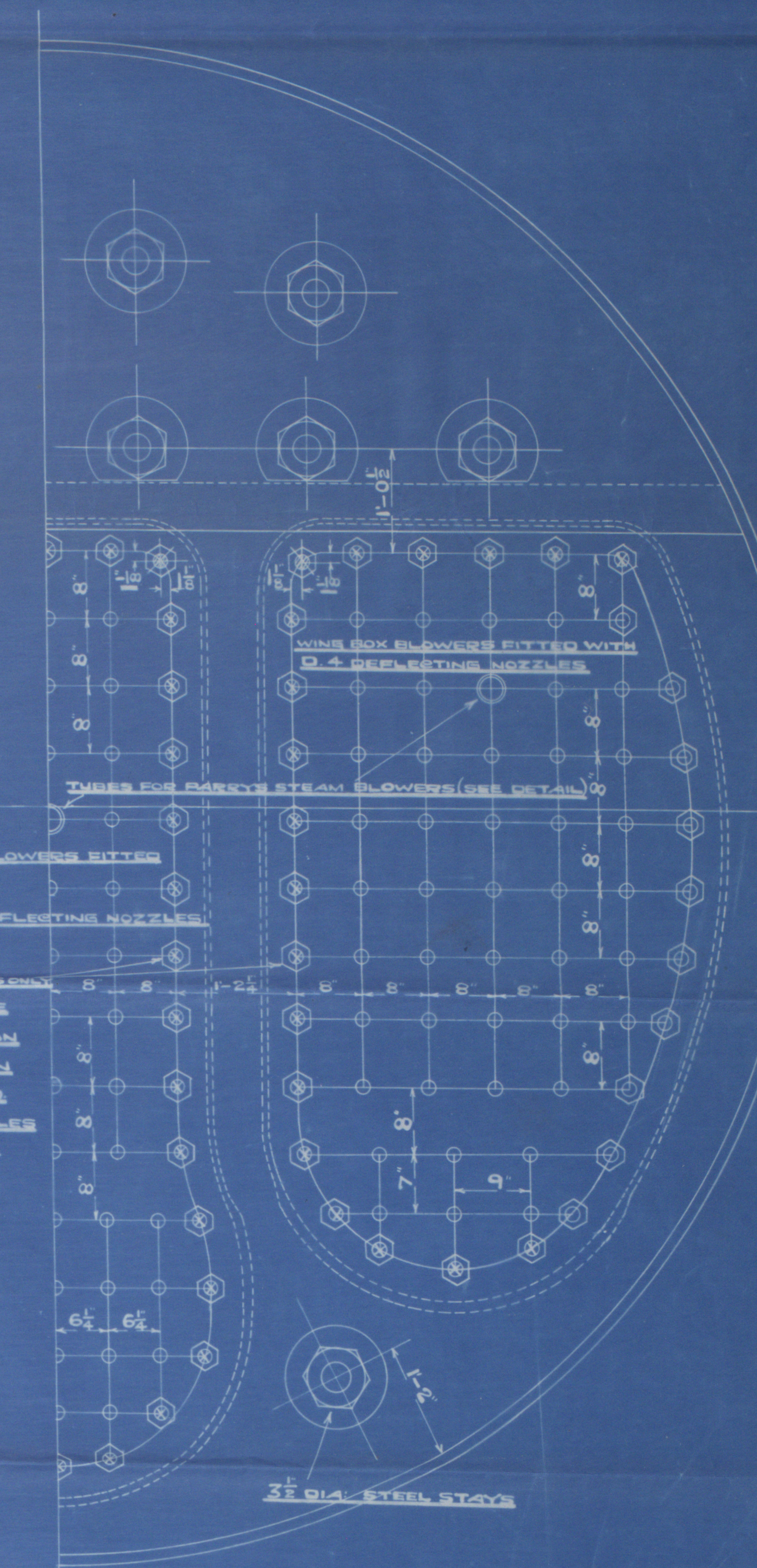
PLAIN TUBES SWELLED
LARGER AT FRONT END



8 STAY TUBES MARKED ⑦ ARE 7/8" THICK
55 ⑥ 3/4"
30 ⑤ 3/8"

NUTS FITTING ON MARGINAL STAYS IN
MIDDLE OF BOXES TO BE
RIVETED OVER INSIDE COMBUSTION
CHAMBERS AND TO PROTECT FROM
BACK OF BOILER & BE GAULLED
STAYS SCREWED AT RIGHT ANGLES
TO COMBUSTION CHAMBER BACK.

DEEP BOX BLOWERS FITTED
WITH D.3 DEFLECTING NOZZLES



ENG NO. 931-933-937

MAIN BOILERS. (3-OFF EACH ENG. NO.)
SCALE - 1" = 1 FOOT.
ALL STEEL EXCEPT WHERE OTHERWISE STATED.



Nº 931

NAVY

Hess Palmer C & Co
Boilers Numbered

925. 931. 935 + 937

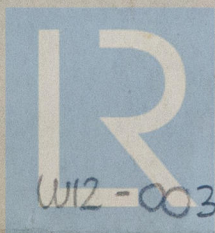
H.P. 200 lbs per sq in

T.P. 350 " " "

Plan for No 935
931

Sr BRITISH SERGEANT.

46051



© 2021

Lloyd's Register
Foundation

W12-0030