

# PALLION ENGINE WORKS

## CRANKSHAFT 600 BORE X (1340 + 980)

DRG. No. 4329 O E

SCALE: 1/2 FULL SIZE

NOTES & ALTERATIONS

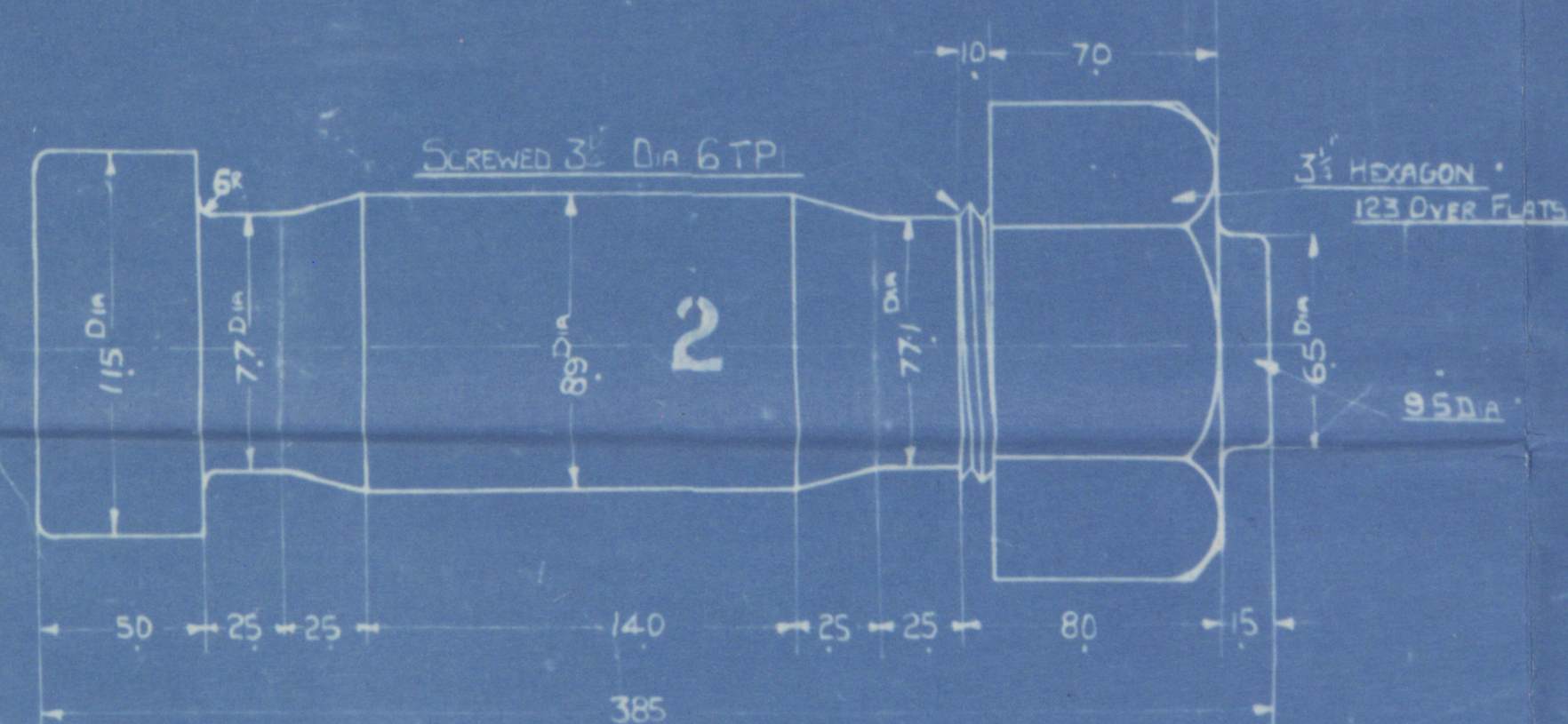
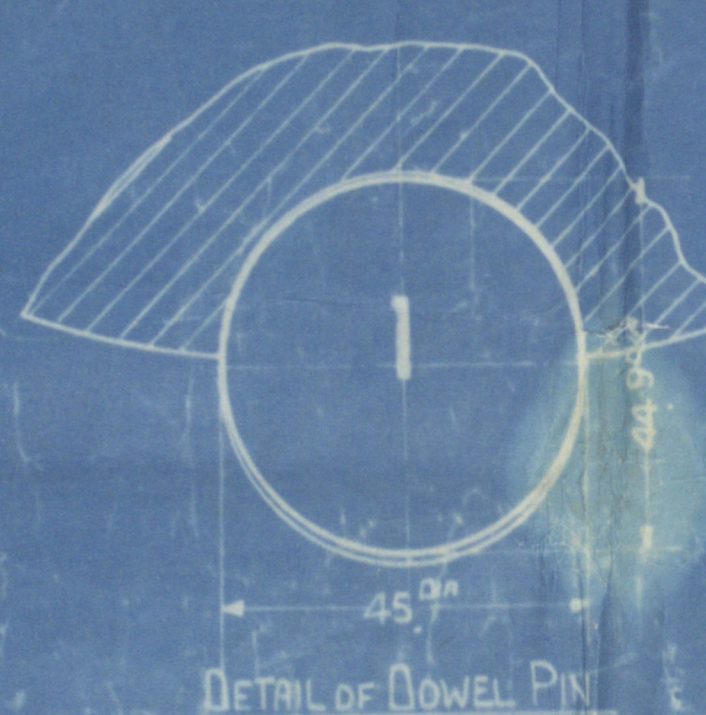
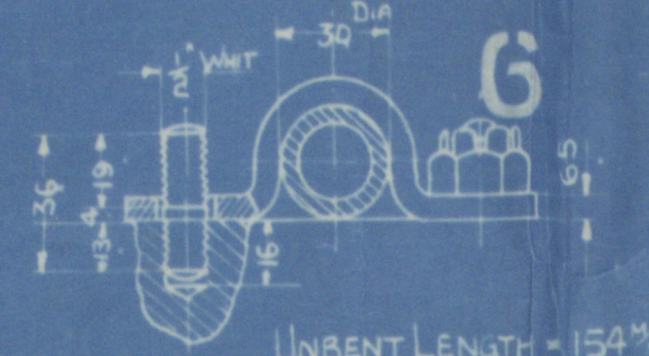
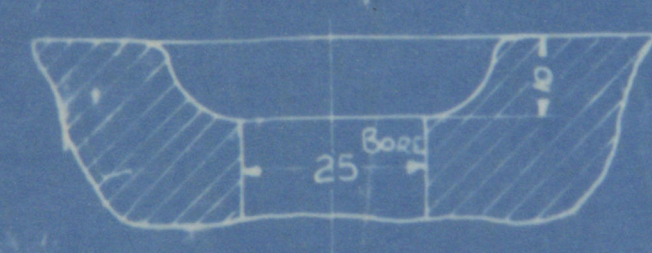
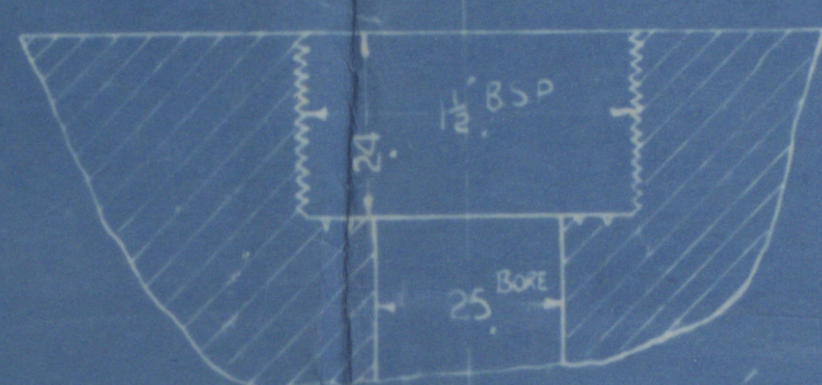
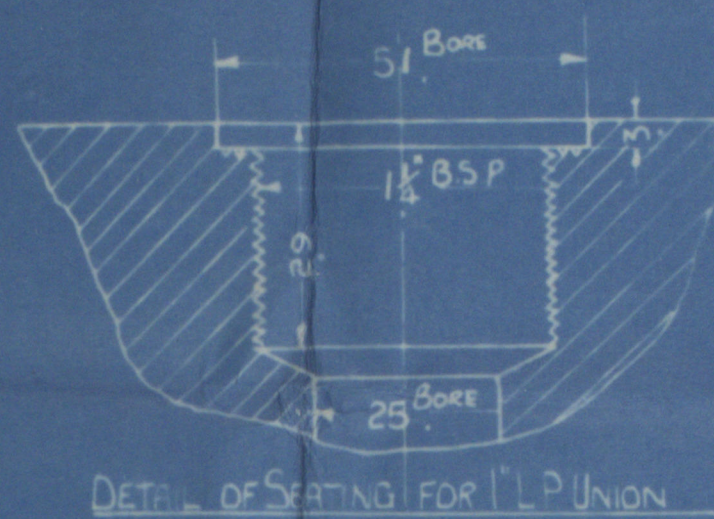
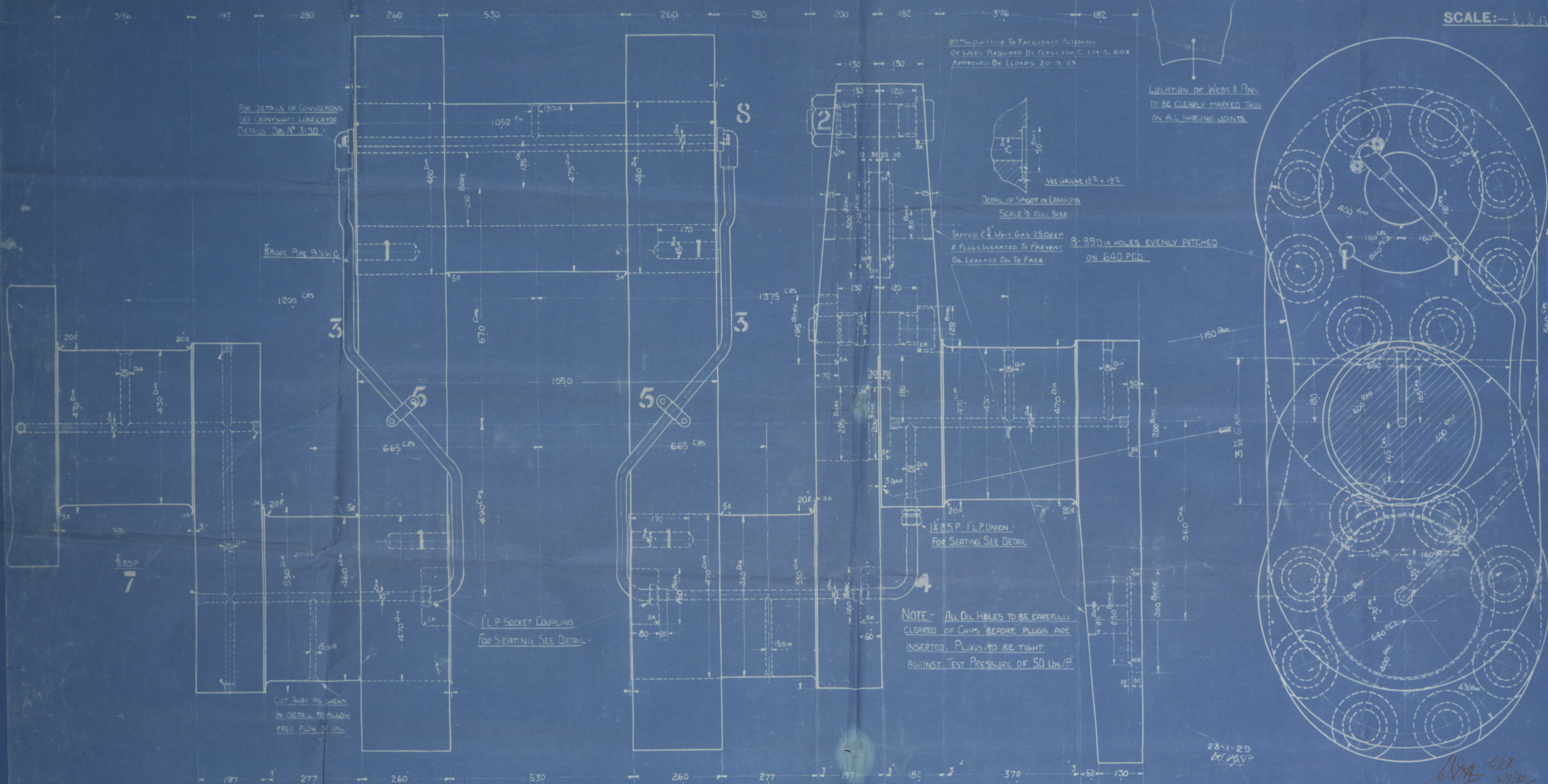
APPROVED BY BRITISH  
CORPORATION FOR C. 174-5, 600  
C.V. LETTER DATED  
6 FEB 1929

MINIMUM SIZES APPROVED  
BY B.C.

JOURNALS = 16 1/2 (4102)  
CENTRE PINS = 15 1/2 (4022)  
WATSON  
CENTRE PINS = 18 1/2 (4762)  
SIDE PINS = 17 (4322)

APPROVED BY LLOYDS  
FOR C. 600, SEE LETTER  
DATED 23.5.29  
LLOYD'S MINIMUM SIZES

JOURNALS = 4232  
CENTRE PINS = 4602  
SIDE PINS = 4372



PART NO.	DESCRIPTION	NO. OFF	MATERIAL	REMARKS
1	8 WHIT STUBS & CASTLE NUTS	16	M.S.	SUPPLIED BY W.D.S.
2	8 B.S.P. PLUGS	28	M.S.	"
3	8 WHIT STUBS & CASTLE NUTS	16	M.S.	"
4	PIPE CLIPS	16	M.S.	"
5	SHORT LENGTH 3/8 BORE PIPE	16	STEEL	"
6	LONG	16	STEEL	"
7	COUPLING BOLTS NUTS & SPLIT PINS	16	M.S.	"
8	DOWEL PINS	32	M.S.	"

DRG. No. 4329

DRAWER No. 1

TYPE 60 LB 4

H2676

C. No. 597-S 603 174-5 177-S-182-3

FOR ARRANGEMENT OF CRANKSHAFT & FURTHER DETAILS SEE DRG. N° 4331 O E

17936



CRANK SHAFT

RICHARDSONS WESTGARTH & CO LD

ENG. N° 2676.

PALMERS S B & I CO LD

M.V. N° 1005

M/V. British Strength Nwc Rept No. 87116.

West Hamlepool Report

No 14035



© 2021  
W12-0095

Lloyd's Register  
Foundation