

29.6.17
6.2.17

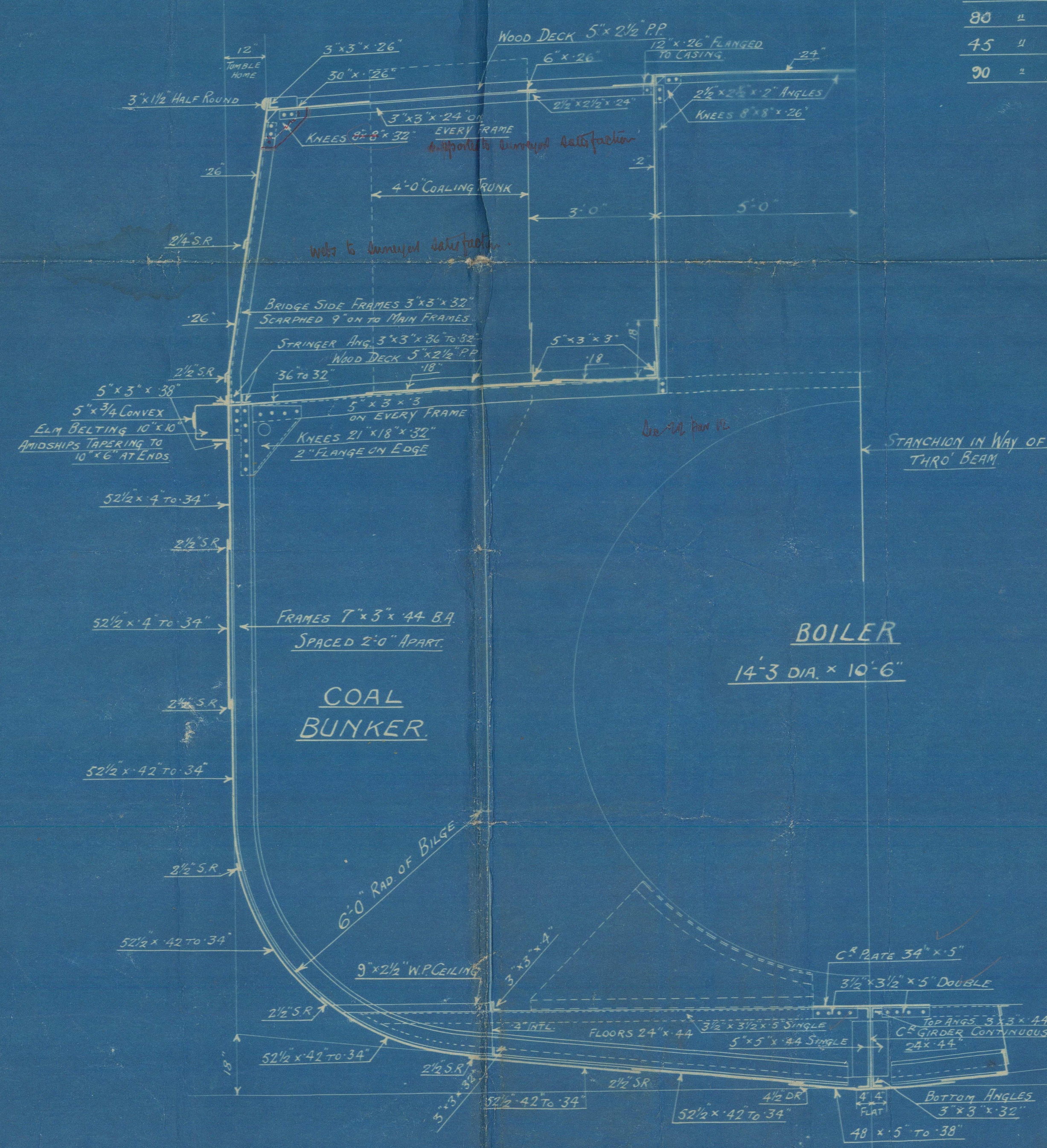
- HULL SECTIONS -
- N° 373 -
- SINGLE SCREW OCEAN GOING TUG -
- DIMS: 155'0" B.P. x 31'0" x 17'0" M.L.D. -
- SCALE 1/2" = ONE FOOT. -

EQUIPMENT.
(EQUIPMENT TONNAGE SIGTONS)

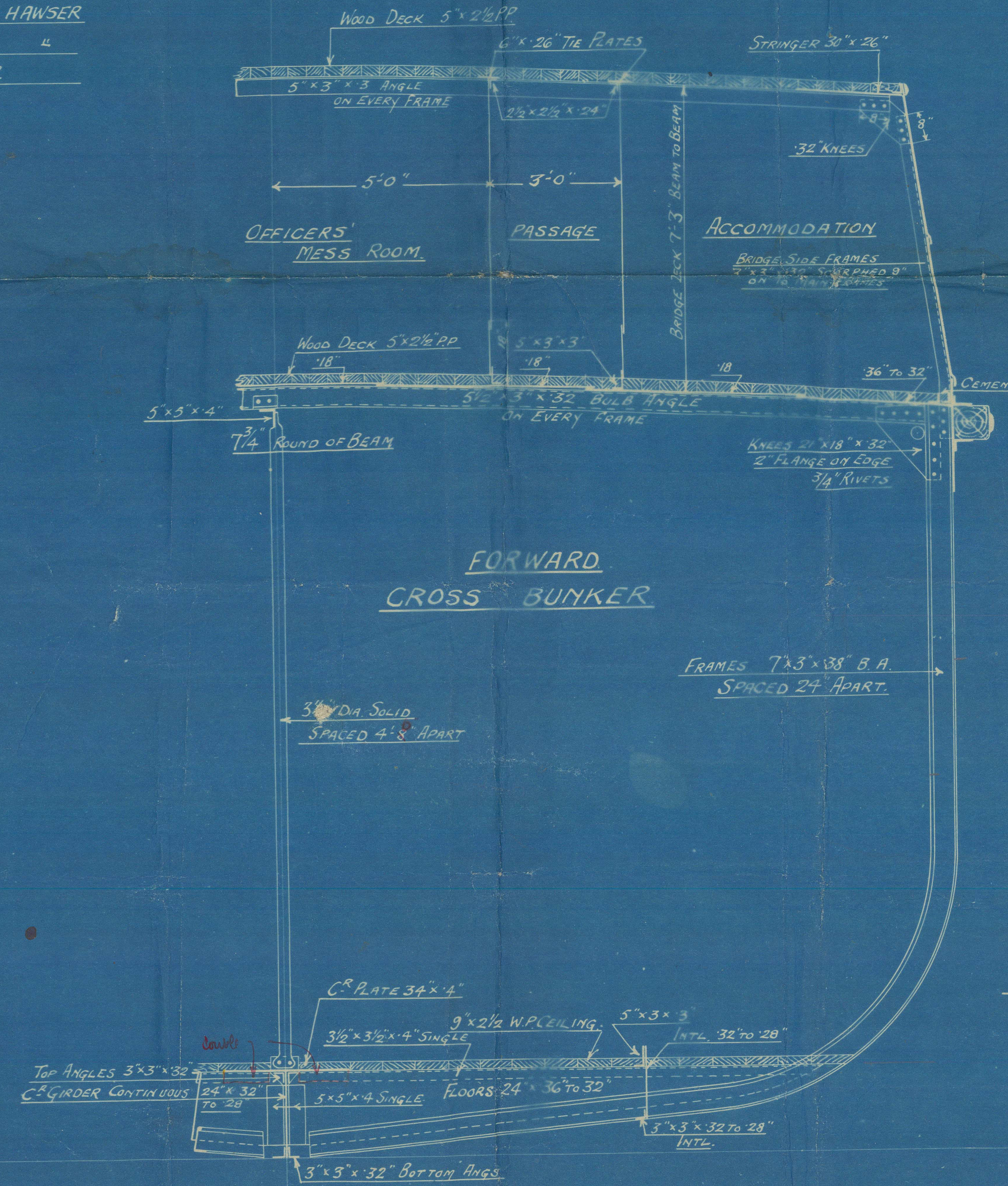
2 BOWER ANCHORS	EACH 14 CWTs STOCKLESS
1 SPARE BOWER ANCHOR	12 "
1 STREAM "	5 " (EX STOCK)
1 KEDGE "	2 1/4 " "
195 FMS 1/4" STUD CHAIN CABLE	
60 " 5" STEEL WIRE STREAM ROPE	
80 " 15" MANILA TOWING HAWSER	
45 " 9" "	
90 " 6 1/2" "	HAWSER

CLASS LLOYD'S
FOR TOWING PURPOSES
GOVERNMENT SERVICE

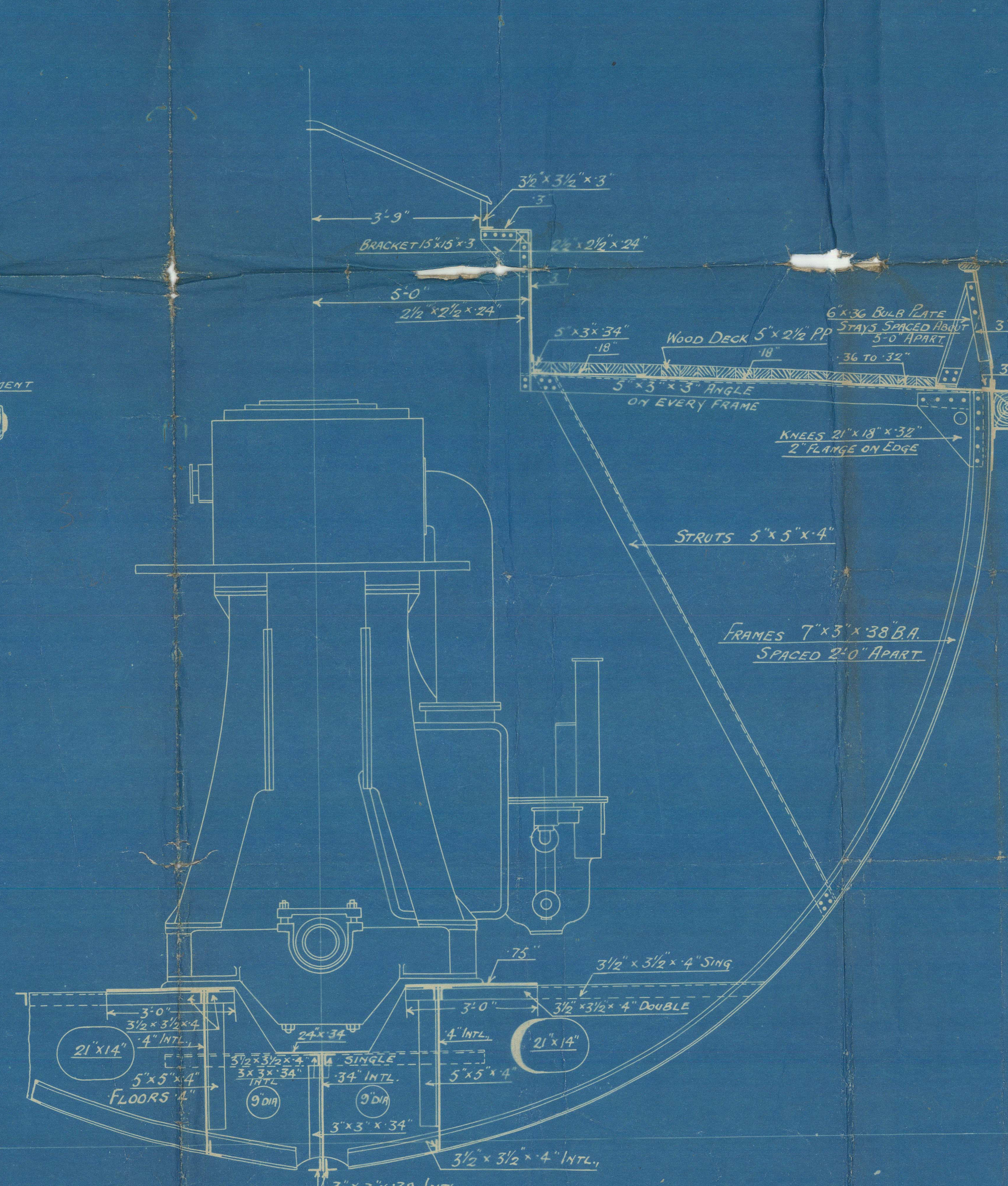
LONGITUDINAL N° = 155 x (31+17) = 7440
TRANSVERSE N° = (31+17) = 48
EQUIPMENT N° = 7440 + 244 = 7734



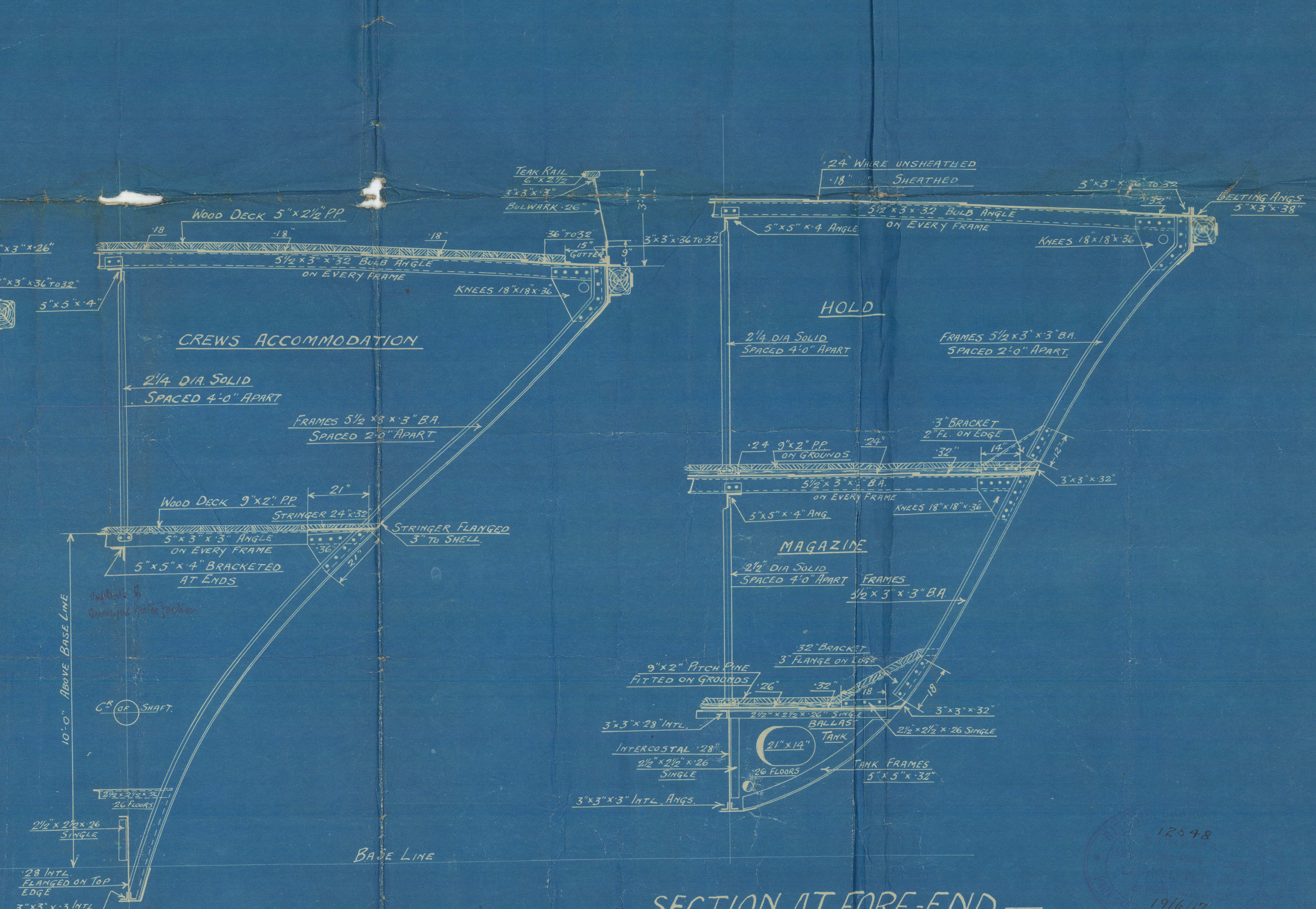
- SECTION THRO -
- BOILER ROOM -
- FRAMES 34 TO 32 -
(34" W. FLOOR)



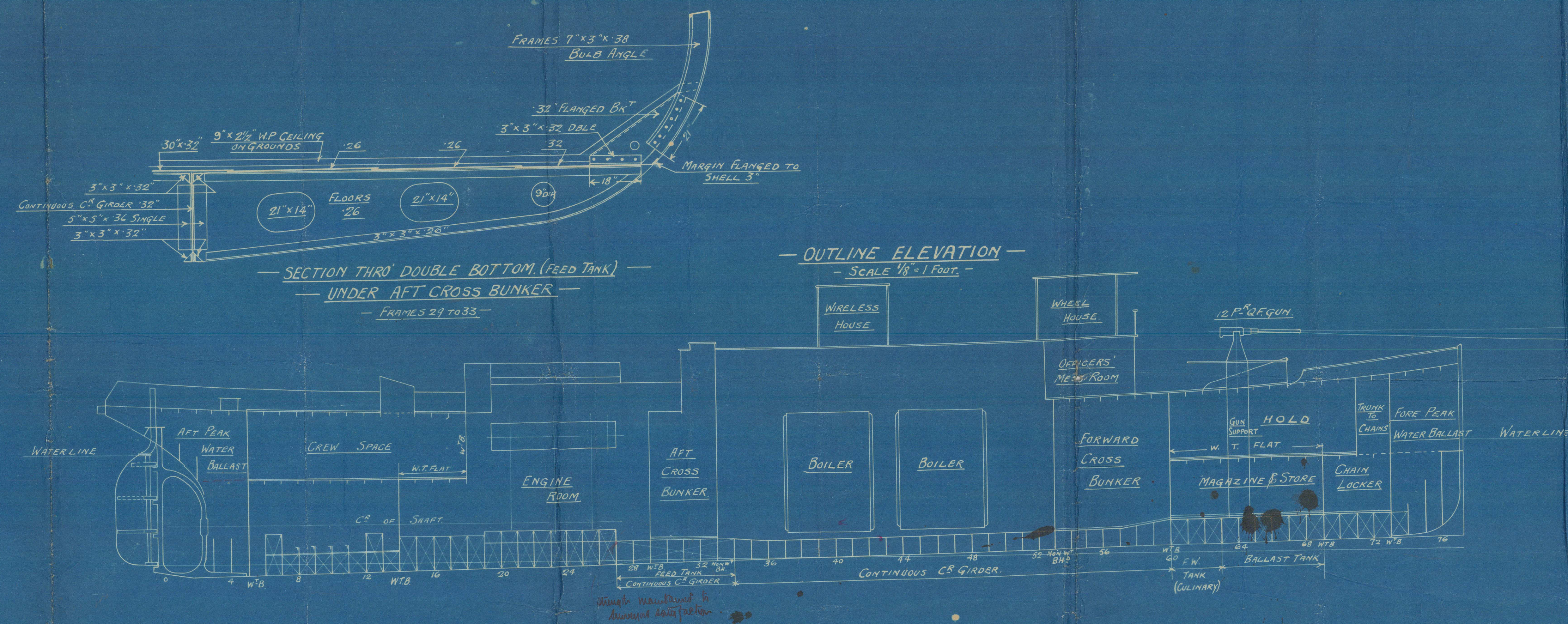
- SECTION THRO -
- FORWARD CROSS BUNKER -
- FRAMES 34 TO 34 -



- SECTION THRO ENGINE ROOM -
- FRAMES 20 TO 26 -



- SECTION AT FORE END -
- FRAMES 61 TO 68 -



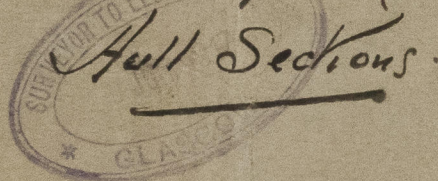
18548

187617

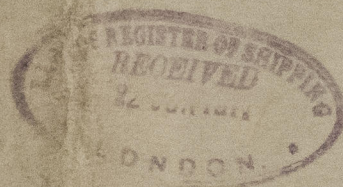


RITCHIE GRAHAM & MILNE.

No. 873.



Full Sections.



GLASGOW REPORT No. 39816
Aug "Jaunt"

RECEIVED

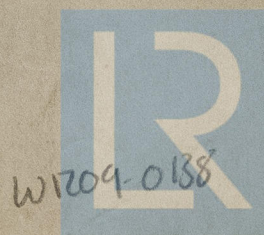
W1209-0138



© 2021

Lloyd's Register
Foundation

873



© 2021

Lloyd's Register
Foundation