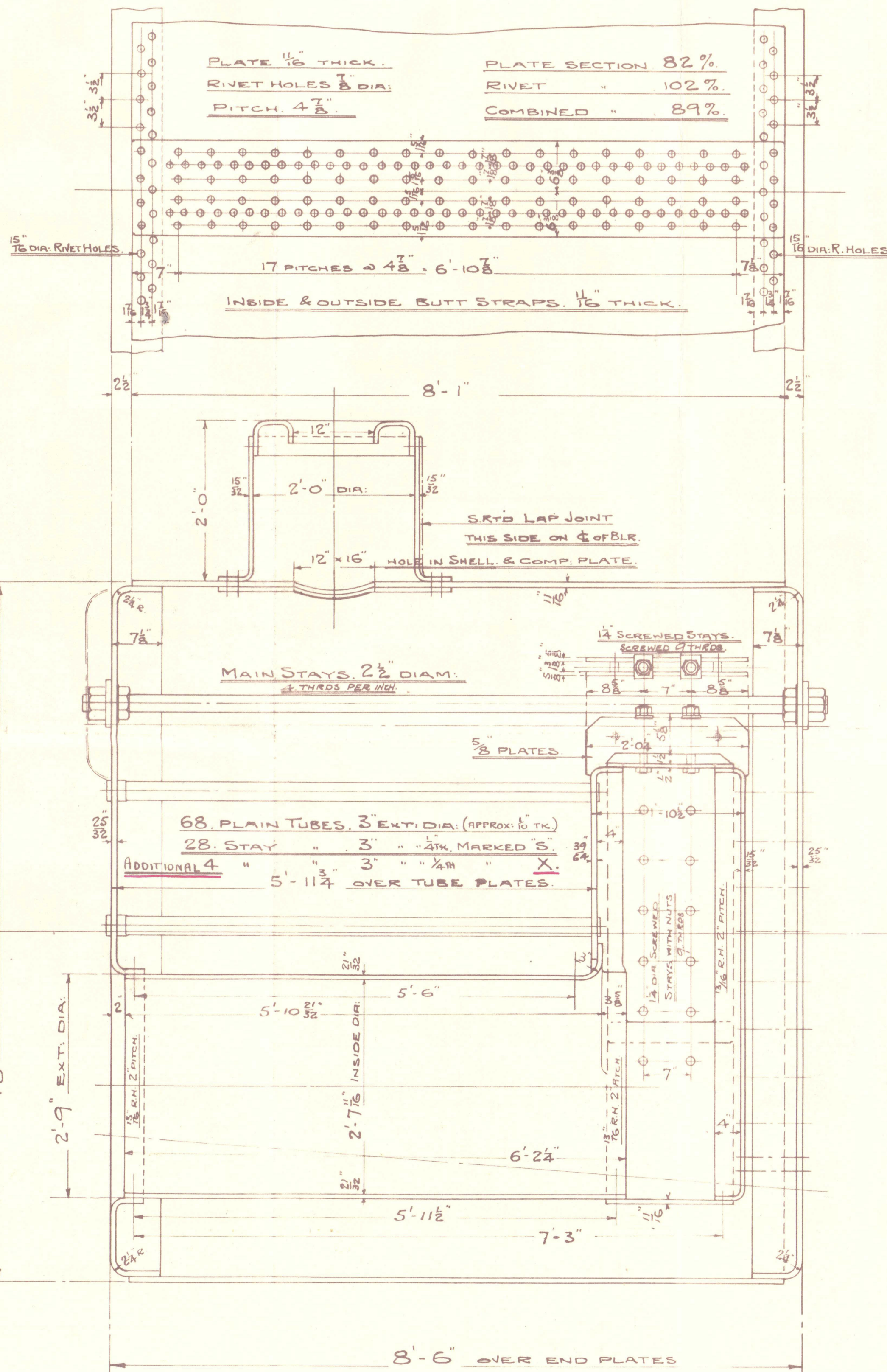
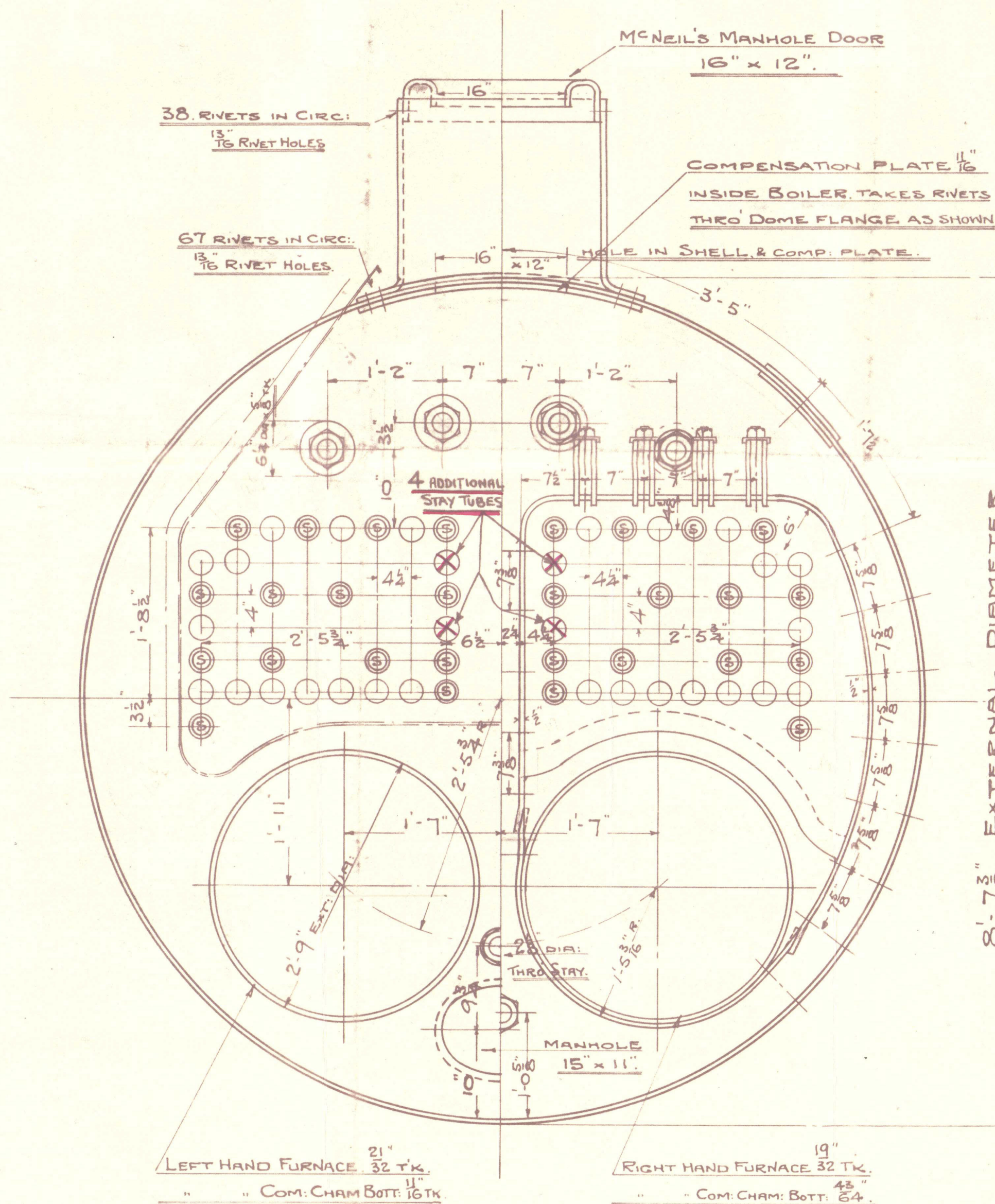


BOTTLER.

8'-6" INSIDE DIA X 8'-6" LONG.

DRAWN BY THE N.E.M. ENG CO (1938) LTD. FROM MEASUREMENTS.

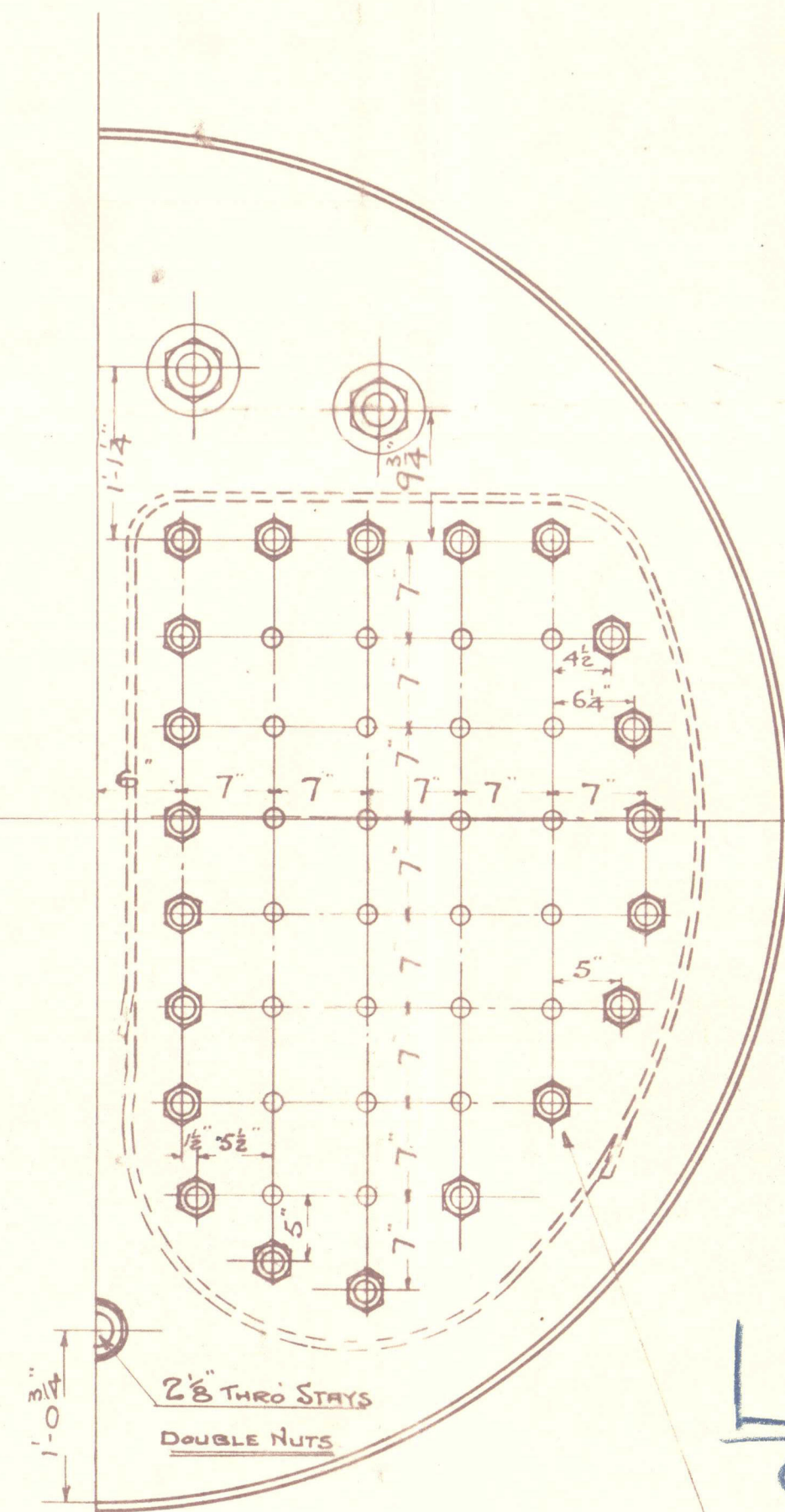
SCALE 1" = 1 FOOT.



TO PASS LLOYD'S SURVEY.	
FOR A WORKING PRESSURE OF	LBS.
SHELL = $22 \frac{(11-2)}{102} \times 82 = (1910 \text{ RULES})$	159 LBS PER ".
HEATING SURFACE ON TUBES	376 SQ. FT.
" " OTHER PARTS	164 " "
" " TOTAL	540 " "

PLATE THICKNESS AS GAUGED BY "LLOYD'S SURVEYOR (AT SUNDERLAND)	
SHELL PLATE.	1/8" THICK.
FRONT TUBE PLATE.	25/32 "
BACK "	3/4 "
COM: CHAM: BACK "	15/32 "
" " WRAPPER "	31/64 "
" " BOTTOM " RIGHT.	43/64 "
" " " LEFT.	11/16 "
FURNACE (AT BOTTOM) RIGHT	19/32 "
" (" ") LEFT.	21/32 "
DOME PLATE	15/32 "

RIVETING.	
DOUBLE BUTT STRAP RIVET HOLES 7/8" DIA.	
CIRCUM: SEAMS.	15/16 "
DOME FLANGE (DOUBLE RTD)	13/16 "
" OVERLAP (SINGLE ")	13/16 "
" TOP RING (" ")	13/16 "



COPY OF PLAN APPROVED.

W.H. W. 20.9.38.

DRAWING N° 10498.

"Sprey."

Boiler

W123-0246



© 2021

Lloyd's Register
Foundation