

MODIFIED AS PER BLACK MARK FOR CLASS 100A -

LONGITUDINAL ELEVATION AND DECK PLANS

OF A STEEL SCREW CARGO VESSEL FOR RIVER SERVICE, CLASSED 100A AT LLOYDS.

PRINCIPAL DIMENSIONS	
LENGTH B.P.	110'-0"
BREADTH MLD.	19'-6"
DEPTH MLD.	9'-9"
RAISED QTR. DECK	2'-6"

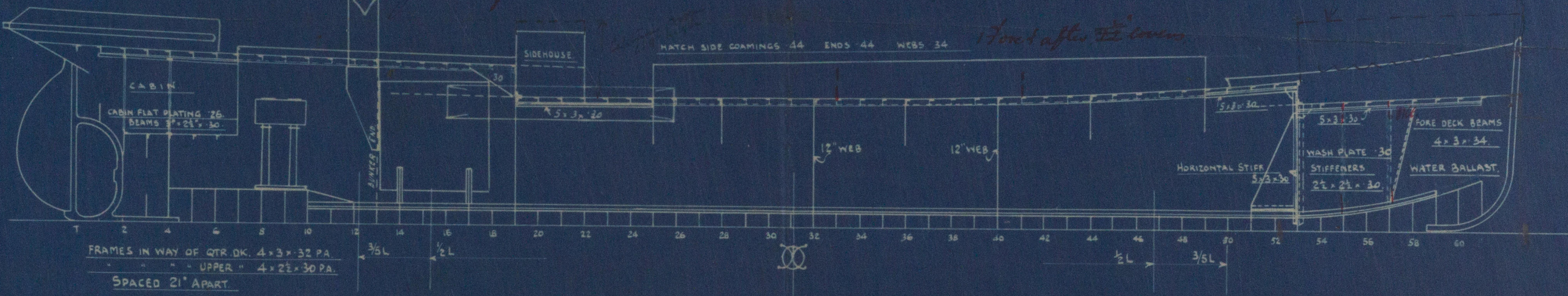
23/4/23

See other plans of this vessel
Entrance to engine room
made to Surveyor's satisfaction

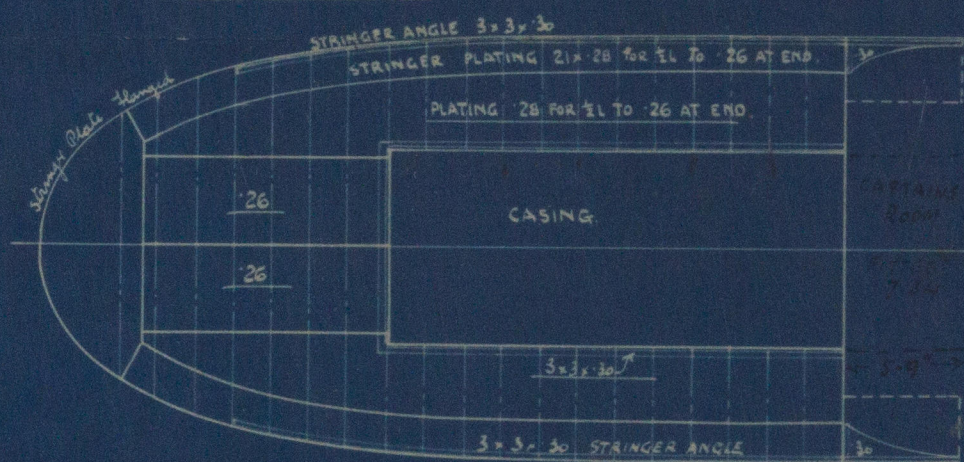
For details on the hull's type

2" x 12" additional for
after fitted 7.34

For details of the
See other plans

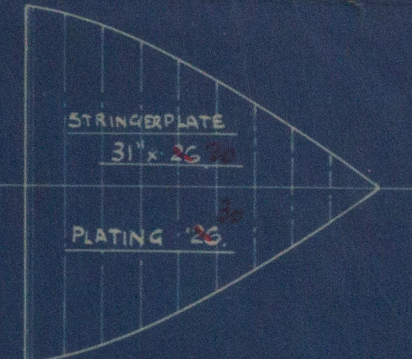


QUARTER DECK

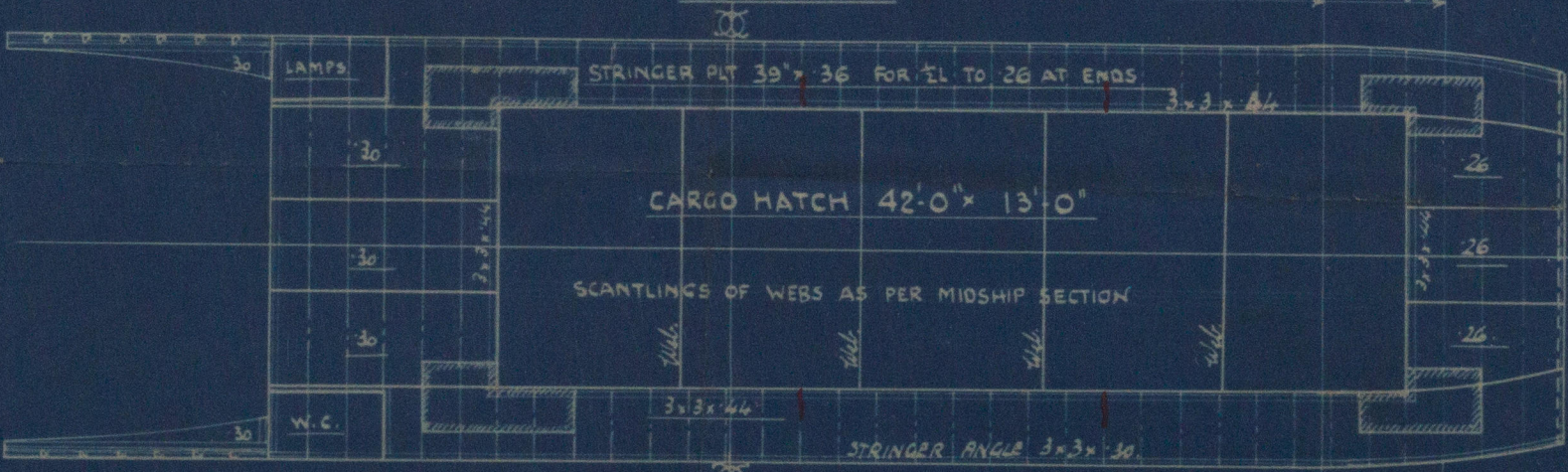


NO 4 W.T. BULKHEAD FLOOR PLATE 32 SINGLE ANGLE TO DECK & OUTSIDE PLATING 3x3x38 PA.
 NO 7 W.T. BULKHEAD 26 AT QTR. DK. TO 30. SINGLE ANGLE TO DK. & OUTSIDE PLATING 3x3x38 PA.
 VERTICAL STIFFS 4x2 1/2 x 30 SPACED 30" APART.
 NO 19 W.T. BULKHEAD 26 AT QTR. DK. TO 38 AT FLOORS DOUBLE ANGLE TO DECK & SINGLE TO OUTSIDE
 PLATING 3x3x38 PA. VERTICAL STIFFS 5 1/2 x 3 x 32 SPACED 30" APART. BRACKETS TO DECK
 & FLOORS 15" x 34.
 NO 53 W.T. BULKHEAD 32 AT DECK 32 AT TANK TOP DOUBLE ANGLE TO OUTSIDE PLATING & SINGLE
 ANGLE TO DECK 3x3x38. VERTICAL STIFFS 4x2 1/2 x 30 SPACED 24" APART.
 BRACKETS TO PEAK DECK 16 1/2" x 34.

FORE PEAK TANK TOP



UPPER DECK



WOOD, SKINNER & CO LTD
SHIPBUILDERS
NEWCASTLE ON TYNE

No 227 SHIP

Hatch coaming stays
to Surveyor's satisfaction.
For details of the hatch
See other plans.

WOOD, SKINNER & CO LTD
BILL QUAY SHIPYARD
NEWCASTLE ON TYNE

NO 227 SHIP DATE 18/4/23

2A
Amended
Profile and Decks
N^o 227
Wood Skinner & Co. Ltd.

~~Spey~~
"Harriet Queen"
NEWCASTLE ON TYNE.
Report No. 44655

W123-0273



© 2021

Lloyd's Register
Foundation