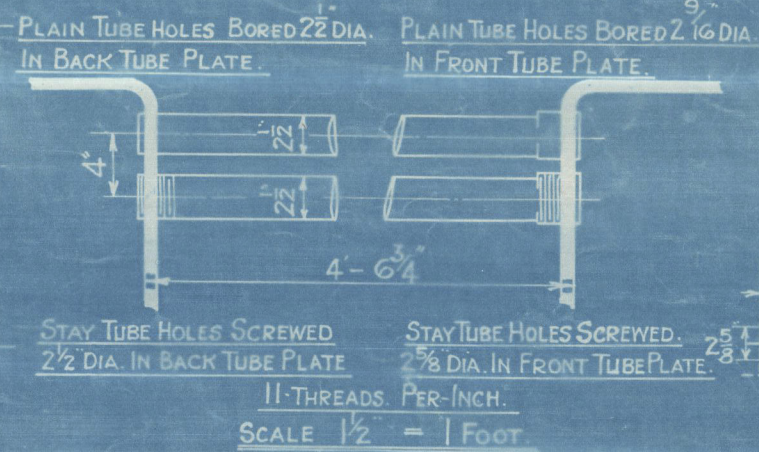


HORIZONTAL FLUE TUBES.



	Lloyds	
PLATE.	$\frac{2 \times 25 - .9025}{2.625} \times 100$	= 65 %
RIVETS	$\frac{2 \times .645 \times .85}{2.82 \times .5625}$	= 69 %
FRONT TUBE PLATE.	$\frac{4 - 2.59375}{4} \times 100$	= 35 1/2 %
BACK TUBE PLATE.	$\frac{4 - 2.5}{4} \times 100$	= 37 1/2 %
SHELL	$\frac{20.5 (\frac{6}{2} - 2) 65}{90}$	= 103 LB
FRONT TUBE PLATE	$\frac{20.5 (15 - 2) 35 1/2}{85.75} \times \frac{28}{78}$	= 103 LB
BACK TUBE PLATE	$\frac{20.5 (14.5 - 2) 37 1/2}{81.75} \times \frac{28}{78}$	= 104 LB
FURNACE	$\frac{1250 \times (3 - 2)}{78}$	= 112 LB
<i>Ogee Ring.</i>	$\frac{576 \times 14 1/2}{9 \times (90 - 78)}$	= 110 lbs

	BOARD OF TRADE		
PLATE	$7/625 - 3/0675$	$\times 100$	= 65 %
	$7/625$		
RIVETS	$28 \times 645 \times 2 \times 4.9$	$\times 100$	= 72.8 %
	$72 \times 2 \times 87 \times 5675 \times 45$		
FRONT TUBE PLATE	$4 - 7/59375$	$\times 100$	= 35.1 %
BACK TUBE PLATE	$4 - 2.5$	$\times 100$	= 37.5 %
	$28 \times 2240 \times 65 \times 2 \times 5525$		
SHELL	$4.9 \times 90 \times 100$		= 104 LB.
	$26 \times 2240 \times 35 \times 17875$		
FRONT TUBE PLATE	$28 \times 8125 \times 4.5 \times 100$		= 138 LB.
BACK TUBE PLATE	$26 \times 2240 \times 37.5 \times 17875$		= 170 LB.
	$27 \times 875 \times 4.5 \times 100$		
FURNACE	10000×3		= 101 LB.
	78×18		

	BUREAU VERITAS	
SHELL	$65 \times 2 \times 28 \times 7240 (5625 - 04)$ 90x4	= 118 LB
RIVETS	$2 \times (2 \times 645) 124 \times 2240$ $90 \times 2 \times 87.5$	= 109.3 LB
FRONT TUBE PLATE	$10400 \times 9375 (4-2-59375)$ 76.5156×4	= 129 LB
BACK TUBE PLATE	$10400 \times 781 (4-2-5)$ 26.5156×4	= 114.9 LB
FURNACE	$600 \times (9-2)$ 39	= 107.8 LB

COCHRAN & CO. ANNAN LTD.
ENGINEERS & BOILERMAKERS
ANNAN, SCOTLAND.

Admitted 14-10-16

PATENT BOILER No 7982

$$\frac{7'-6" \times 16'-3" \times 730 \text{ lb} \times 100}{\text{ft}^3}$$

SIEMENS MARTIN MILD STEEL PLATES.

DRAWING № 11165.

W1275-0244

STANDARD PLAN OF FURNACE SURVEY:- LLOYDS

- W.D. -

No. 2 G 2. 11-18.

COCHRAN & CO., ANNAN, Ltd.

Enclosure

FOR

Messrs.....

Lloyd's Register

2/2

Lloyd's Register
Foundation

Roseworth

COCHRAN & CO., ANNAN, LD.

Boiler No. 7982

Drawing No. 11165.

100 lbs per sq. inch.

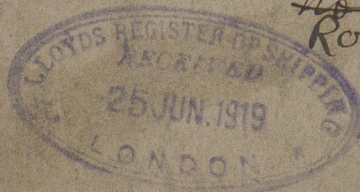
Mark on boiler:-

NO 14779
LLOYD'S TEST.
200 lbs.
P.MCG 20/6/19.

GLASGOW REPORT No. 38861

Pressure Report No. 17875

~~Norman~~
Roseworth



W1275-0244 1/2