



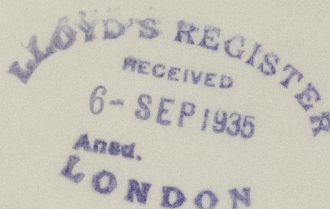
TELEGRAMS: "REGISTER" KOBE  
TELEPHONE: 2530 SANNOMIYA

# LLOYD'S REGISTER OF SHIPPING

MEIKAI BUILDING

No. 32, AKASHI MACHI,

KOBE, August 17th 1935.-



The Secretary,  
LONDON

S/S "NANKOH MARU"

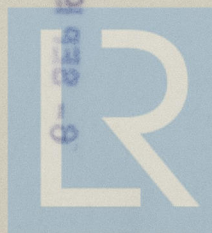
Dear Sir,

I enclose herewith a translation of a letter from the Owners of the above vessel from which you will note that they do not desire to continue her Classification with the Society.

I am, Dear Sir,

Yours faithfully,

*Handwritten signature: J. Aspinall*



© 2021

Lloyd's Register  
Foundation



