

T.S.S. "CHANDRAVATI".

T.S.S. "PRABHAVATI".

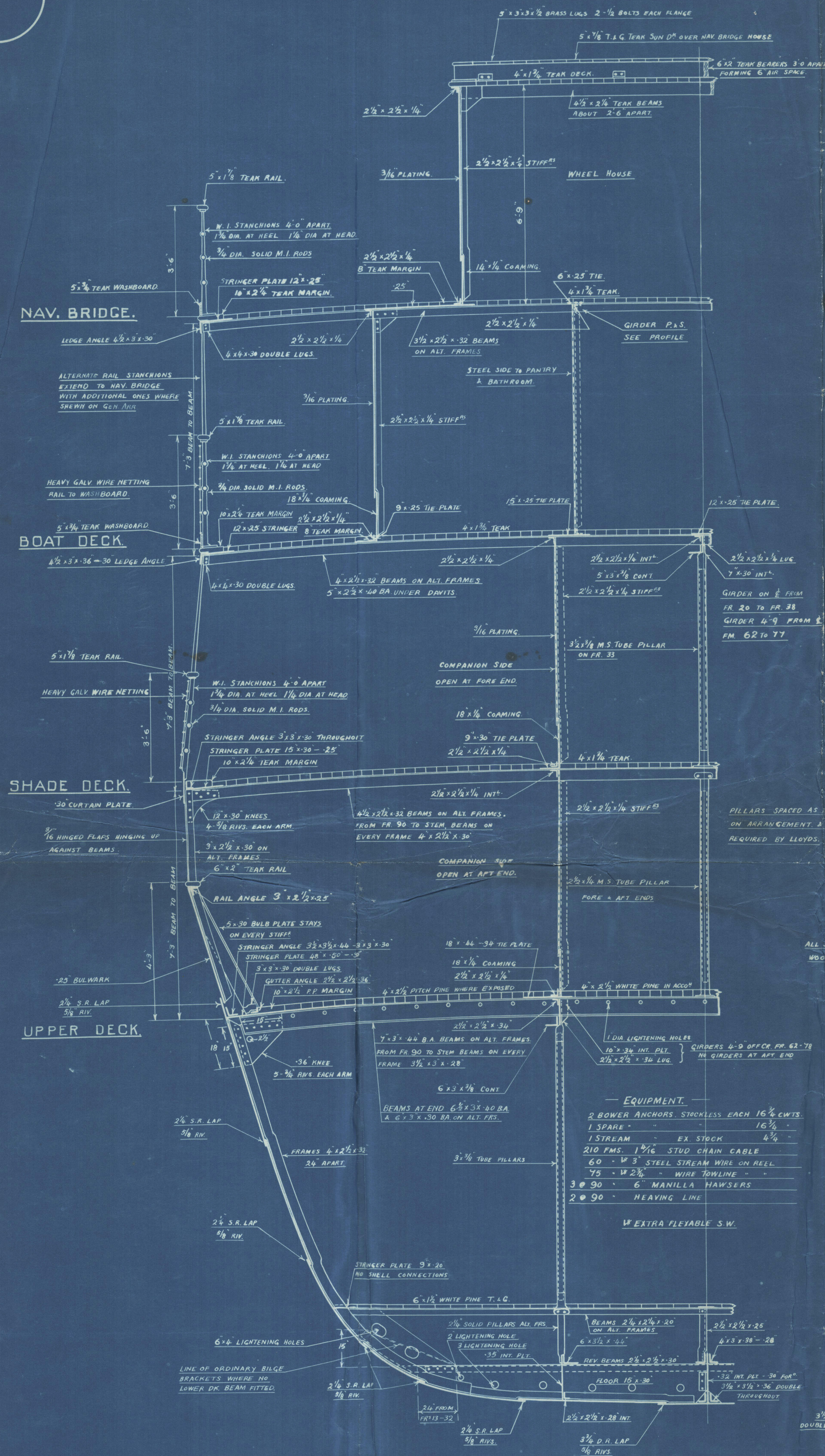
MIDSHIP SECTION.

199'-0" BP. x 34'-0" x 11'-6" MLD.

SCALE $\frac{1}{2}$ " = 1 FOOT.LLOYDS & A.I. WITH FREEBOARD FOR COASTING SERVICE BOMBAY AND GOA.
MOULDED DRAFT ALL SEASONS 6'-9"

LLOYD'S NUMERALS

DEPTH	D = 11.50
1 ST LONG. NO.	L x D = 2288.50
2 ND	L x (B+D) = 9054.50
PROPORTIONS	L/D = 17.30
FRAMING DEPTH IN ENGINE SPACE	d = 8.50
ELSEWHERE	d = 10.25



SECTION THRO' FOR ACCOM.

DOUBLE BOTTOM SCANTLINGS.

FRAMES 3' x 2 1/2" x 28"

FLOORS 36' x 28" SOLID ON EVERY FRAME W.T. FLOORS 36"

REV. BARS 3' x 3 1/2" x 28" DOUBLE IN ENGINE SPACE & INTERST (5' x 3' x 30" WHERE REQUIRED)

CENTRE GIRDER 36' x 36" TOP ANGLE 2 1/2" x 2 1/2" x 32" DOUBLE

BOTTOM ANGLES 3 1/2" x 3 1/2" x 36" DOUBLE VERT. ANGLES 2 1/2" x 2 1/2" x 28" DOUBLE

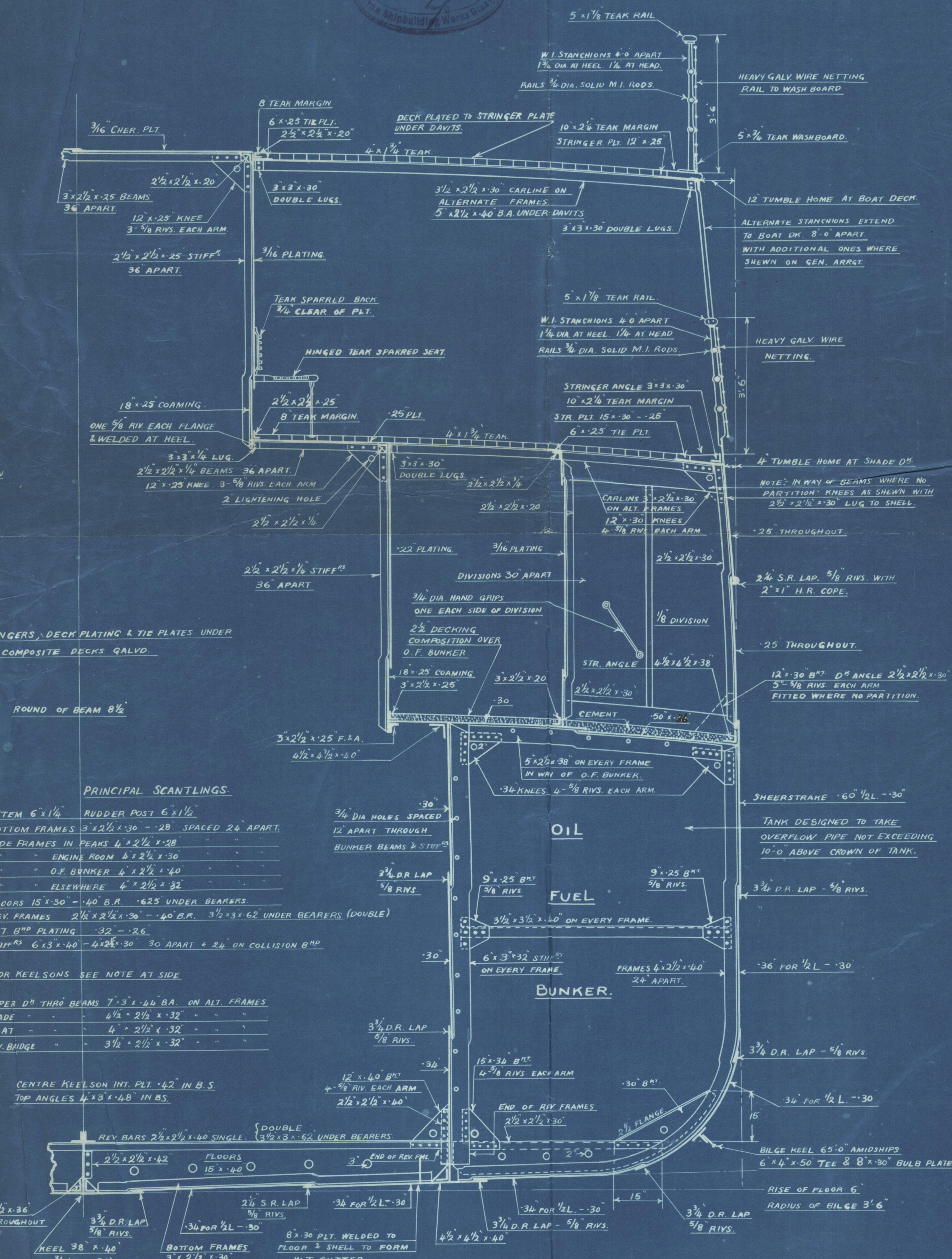
SIDE GIRDERS 35" TOP ANGLES 3' x 3 1/2" x 36" x 36" BOTTOM ANGLE 2 1/2" x 2 1/2" x 28"

" " VERT. ANGLES 2 1/2" x 2 1/2" x 28"

INNER BOTTOM PLATING 32" IN WAY OF ENGINES 7/8"

MARGIN PLATE 21" MINIMUM x 32" ANGLE 3' x 3' x 32"

BRACKETS 30" FLG. 2 1/2" VERT. ANGLES ON MARGIN PLT 2 1/2" x 2 1/2" x 28" SINGLE



SECTION THRO' DOUBLE BOTTOM.

Ms

Ms. Prabhavati

RETAIN



© 2021

Lloyd's Register
Foundation