

Lloyd's Register  
Foundation



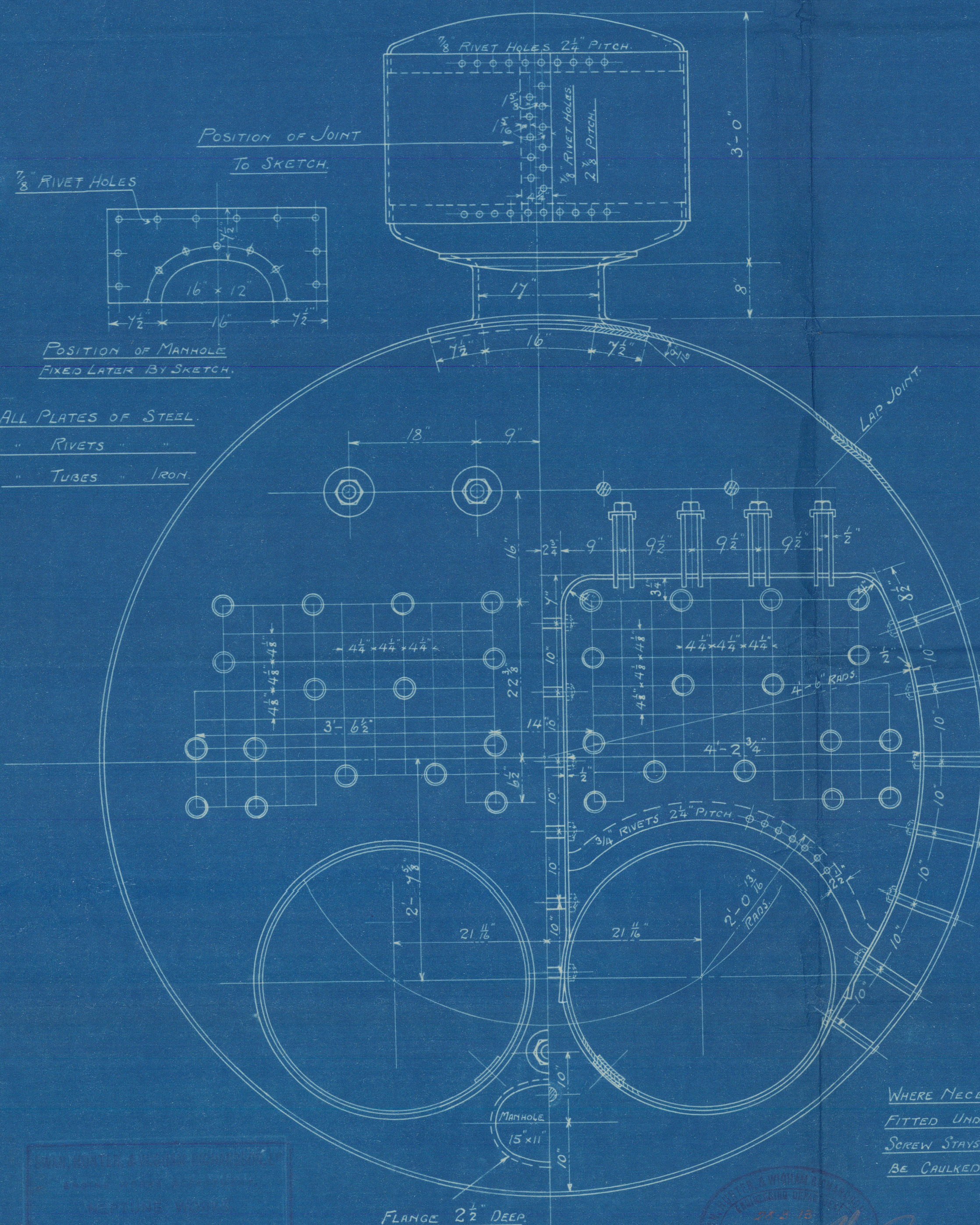
# TENSILE STRENGTH OF MATERIALS.

SHELL PLATE & MANHOLE DOUBLINGS = 29 3/4 TO 33 TONS.

GIRDER PLATES = 28 TO 32 "

ALL OTHER PLATES = 26 TO 30 "

LONGITUDINAL STEEL STAYS = 28 TO 32 "



CIRCUMF. JOINT 3/8" RIVET HOLES 2 5/8" PITCH

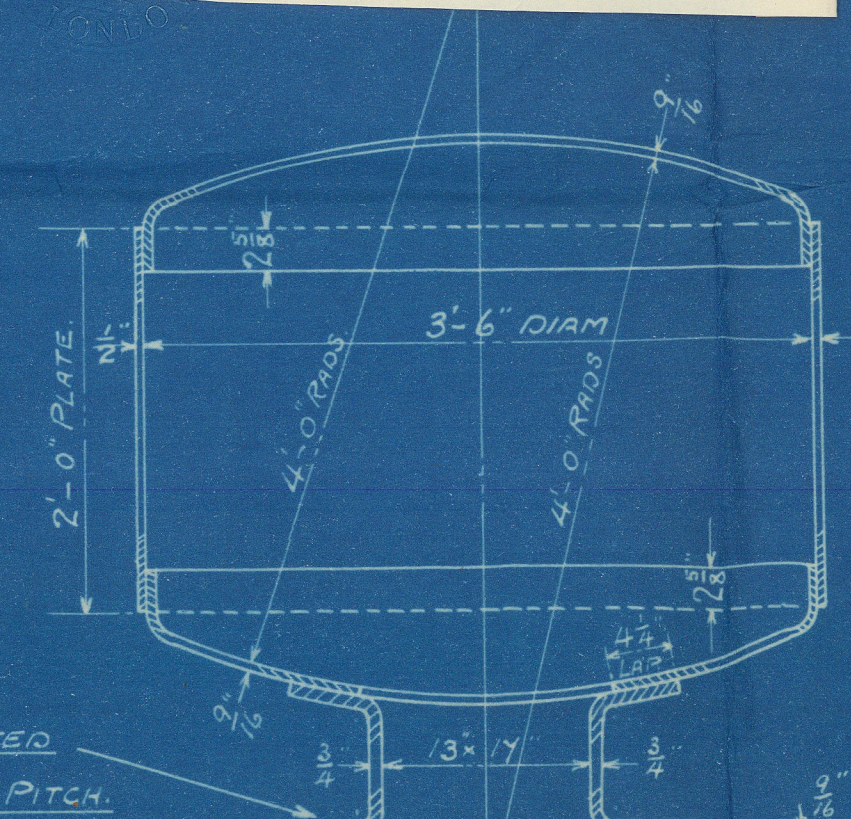
PLATE 75%

RIVET 77.8%

LONG. JOINT 3/8" RIVET HOLES 3 1/2" PITCH.

HYDRAULIC MACHINE RIVETING.

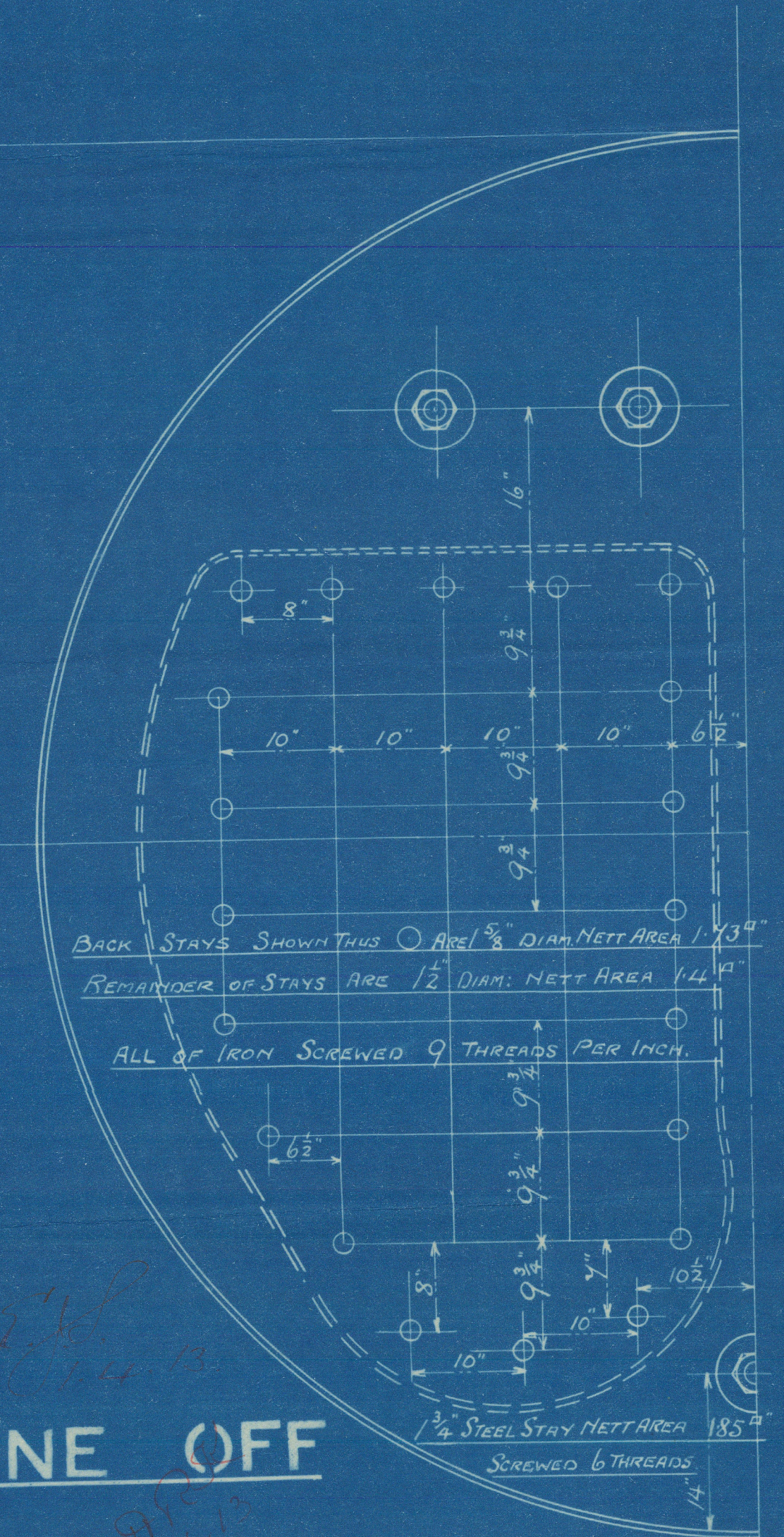
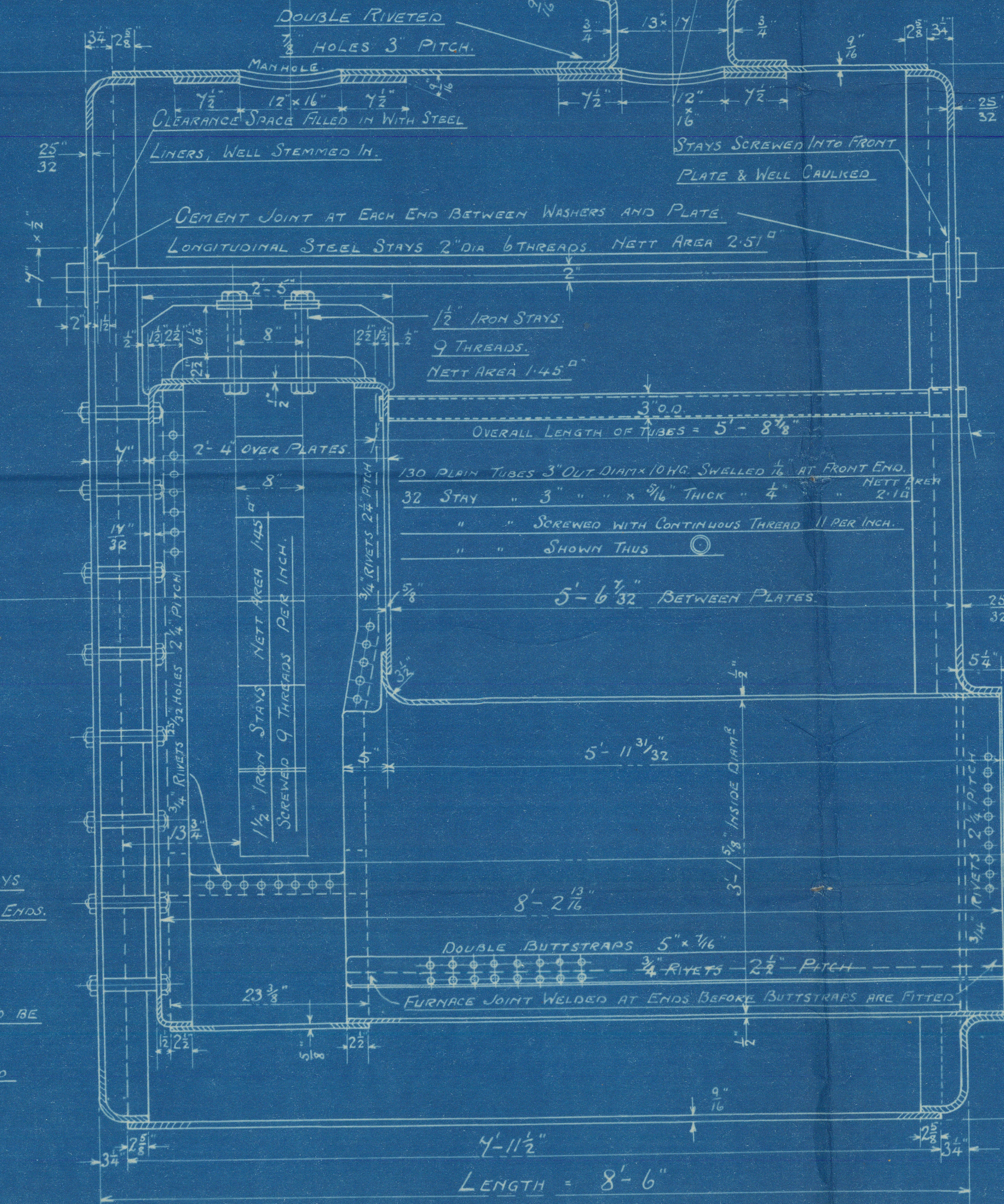
ALL HOLES DRILLED IN POSITION.



HEATING SURFACE 875  
892 SQ. FT.  
GRATE 32.6 SQ. FT.  
FIREBARS 5'-3" LONG. (IN TWO LENGTHS).

SURVEY - LLOYDS.

WORKING PRESSURE 80 LBS PER SQUARE INCH.  
TEST 160 " " " "



ONE OFF  
DONKEY BOILER. NO. 926.  
SCALE: 1" = 1 FOOT.

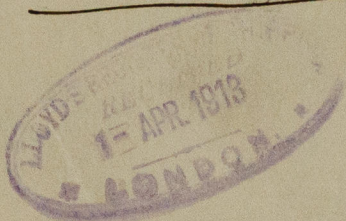
WHERE NECESSARY WASHER TO BE  
FITTED UNDER NUTS IN CC.  
SCREW STAYS THROUGH SHELL TO  
BE CAULKED.



Messrs Swan Hunter & Brigham  
Richardson Ltd No 926

1 Donkey Boiler. W. P 80 lbs

---



---

S.S. "IMBER"

NEWCASTLE-ON-TYNE.

Report No 65734

---