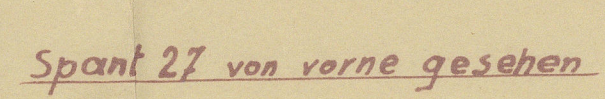
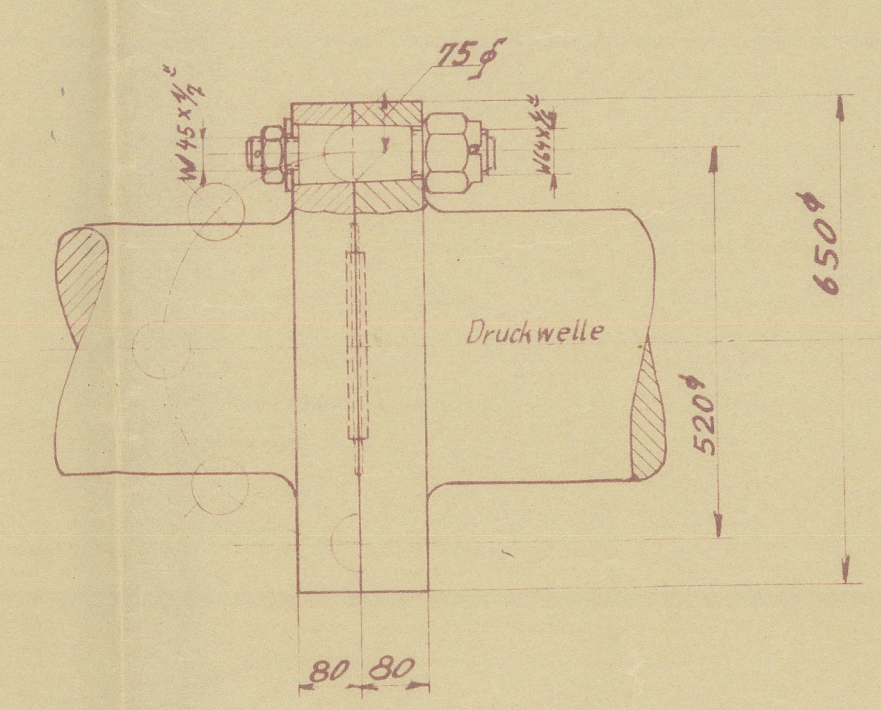
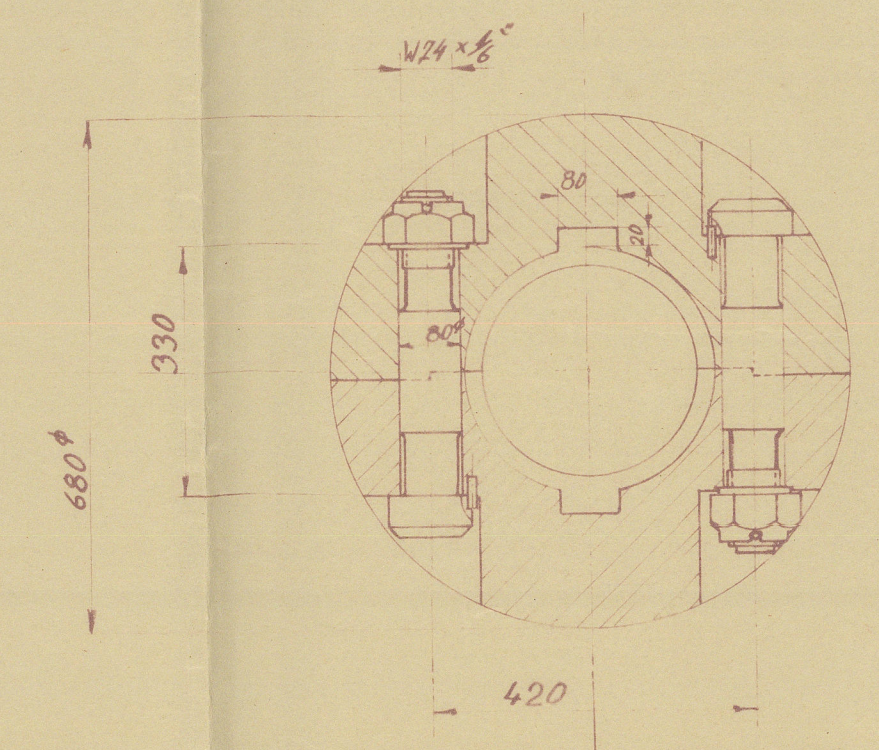


754 H. 765, 766



S.A.
10-3-37

Twist Entry Hamburg Report Nr. 22914
'Elsa Esberger'

2.

E. Esberger

Shafsing
Hornaldswerke's Yard No. 765
Hamburg. letter 4/3. 37.

© 2021

Lloyd's Register
Foundation

W1352-0125