



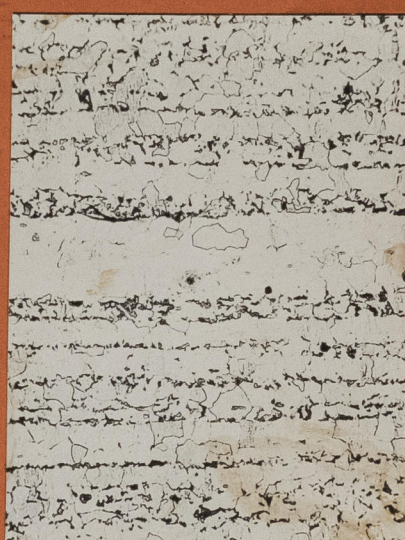
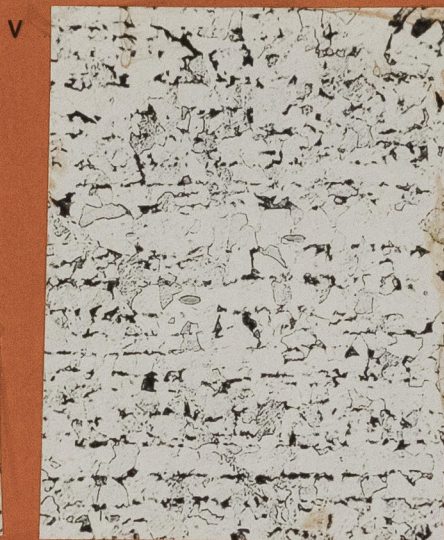
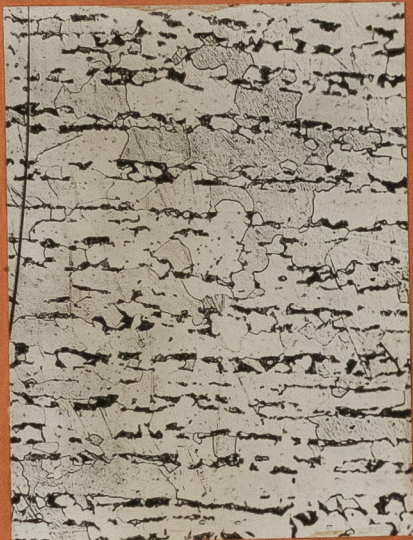
Tafel 45

gerissenes Mantelblech des St. B. Kessels.

Nr. 4982 V. 100 Abb. 1

Nr. 4964 V. 100 Abb. 2

Abb. 3 V. 100 Nr. 4968



Körnigliches Gefüge

normalisiert

geglüht bei 750°

Mantelblech des B. B. Kessels

Abb. 4

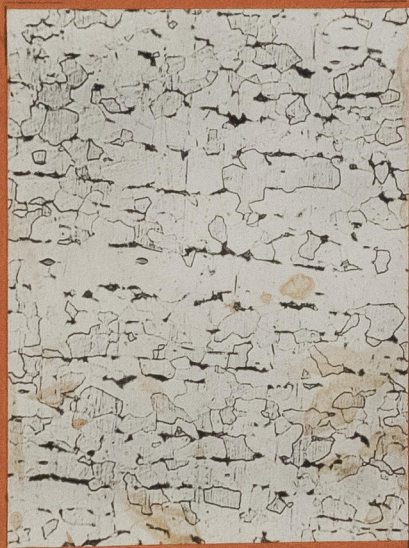
Abb. 5

Nr. 4969

V 100

Nr. 4940

V 100



Körnigliches Gefüge

normalisiert.



Lloyd's Register
Foundation

Forsh
F. 8. 37.