

STEEL BOILERS

To Lloyds Requirements for a working Pressure of 180 lbs per sq. in.

All Plates, Rivets, Stays & Girders of Steel. Tubes of Wrought Iron.

Scale 1 inch = 1 Foot.

CFB.

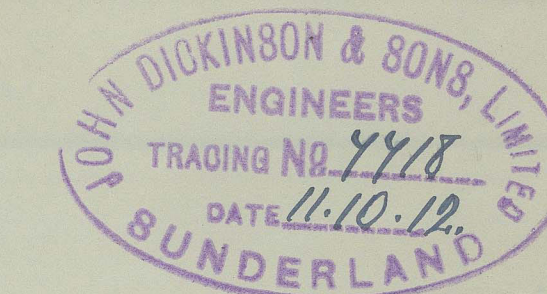
ENC
755

2 OFF

Intended for Messrs John Blumer & Co's S/S No 216

DATE FURNACES

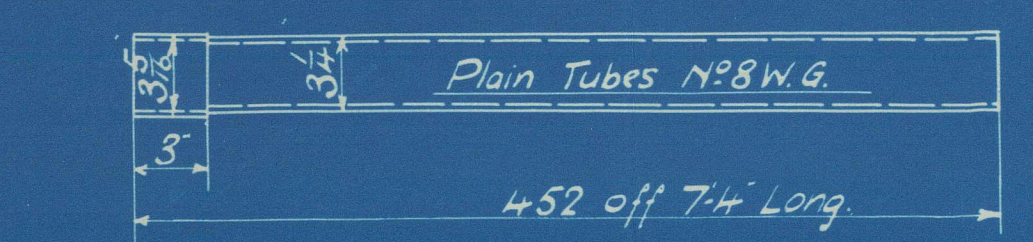
October 11/1902



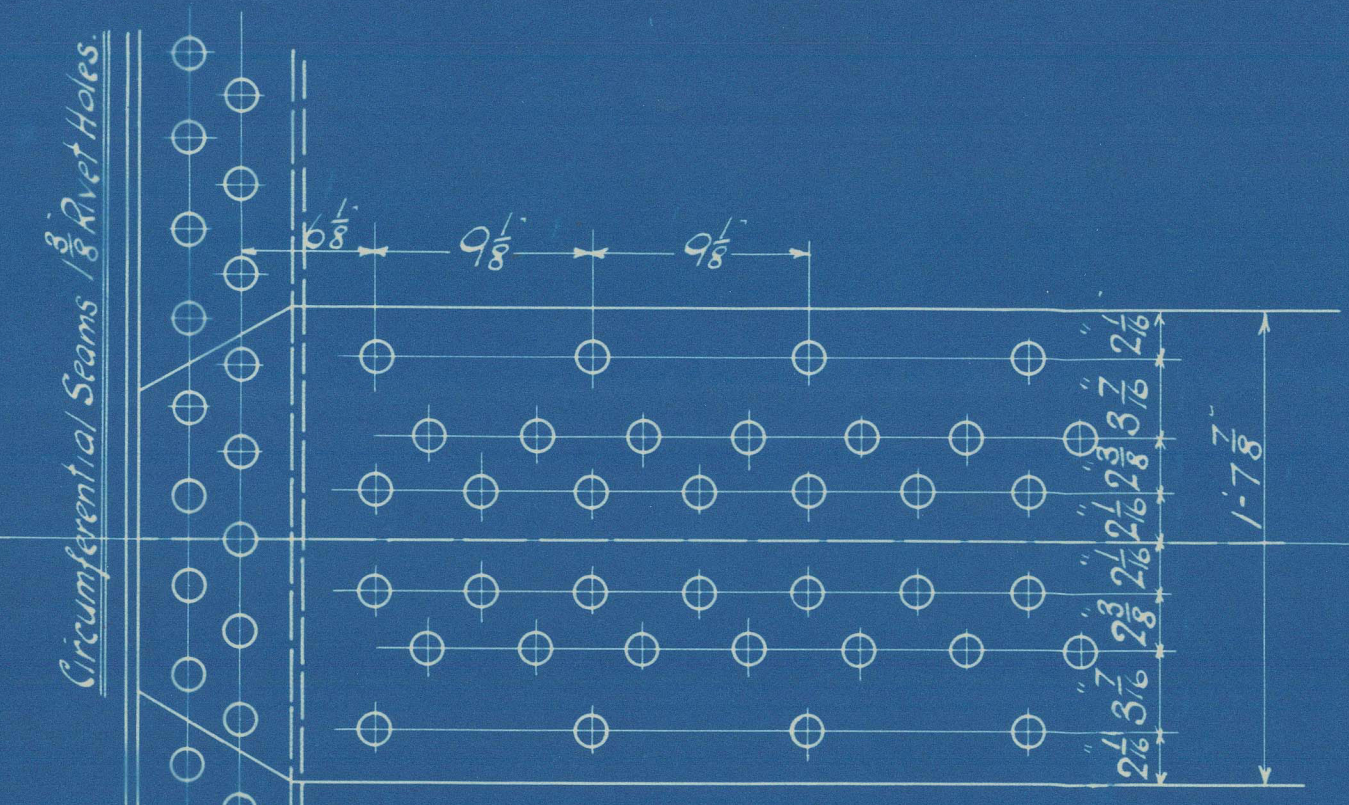
Heating Surface in 2

Boilers = 4436 sq. ft.

Diag	Threads per inch	Eff. Dia	Eff. Area	Total in 180000
8 1/2	6	2.0218	6.7	114
2 1/2	6	2.2858	4.13	4
2	9	1.8578	2.695	4
1 3/8	9	1.7328	2.355	14
1 1/4	9	1.6078	2.031	284



Stay Tubes 5/8 Thick 10 Threads per inch Eff. Area 2.255 sq. in.



Longitudinal Seams filled with Double Butt Straps.

Straps 1 1/2 Thick Rivet Holes 3/4 Dia. Scale 1/2 inch = 1 Foot.

Tensile strength of Shell Plates, Butt Straps, Manhole Stiffening Rings 28 to 32 Tons.

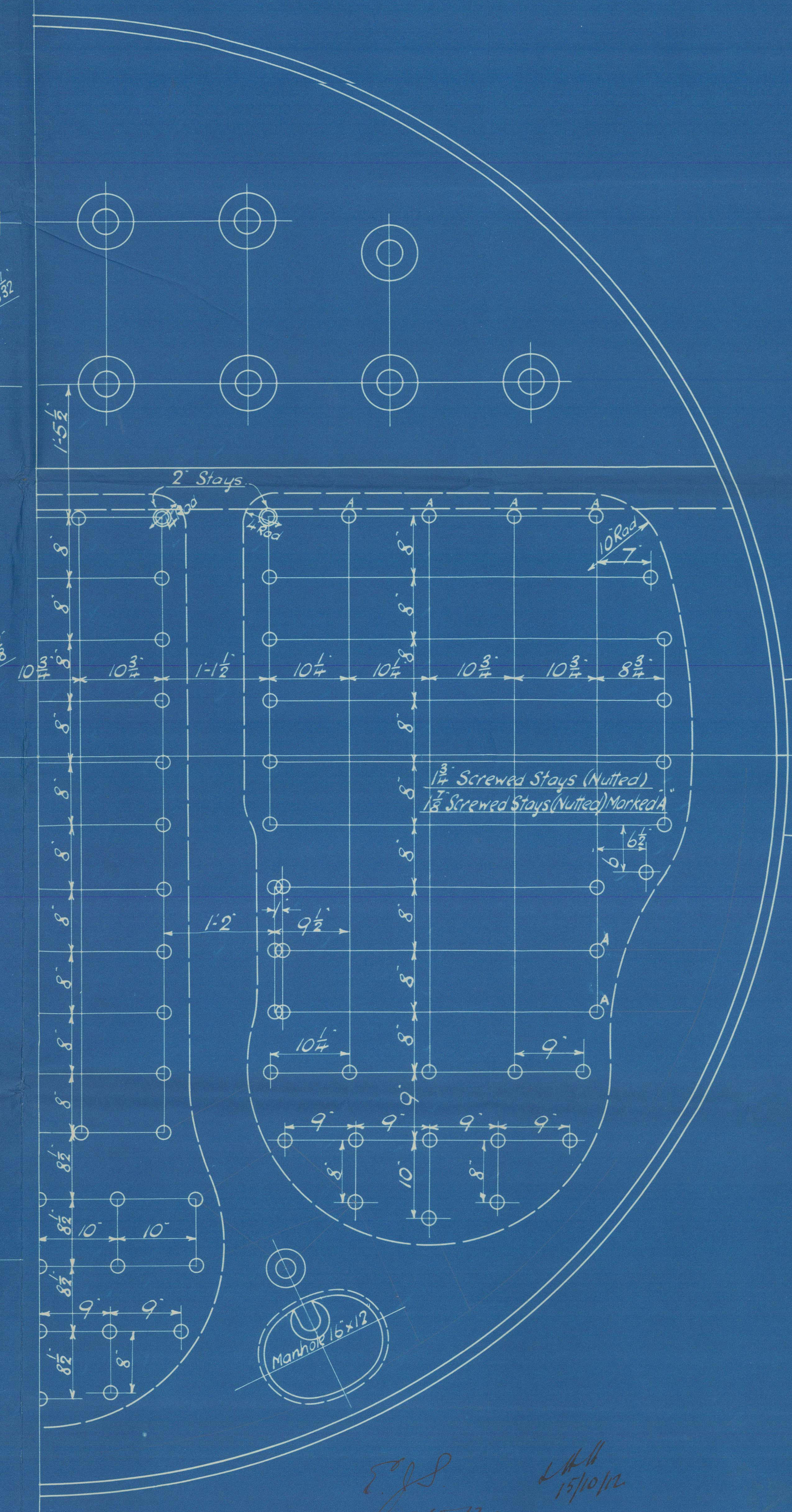
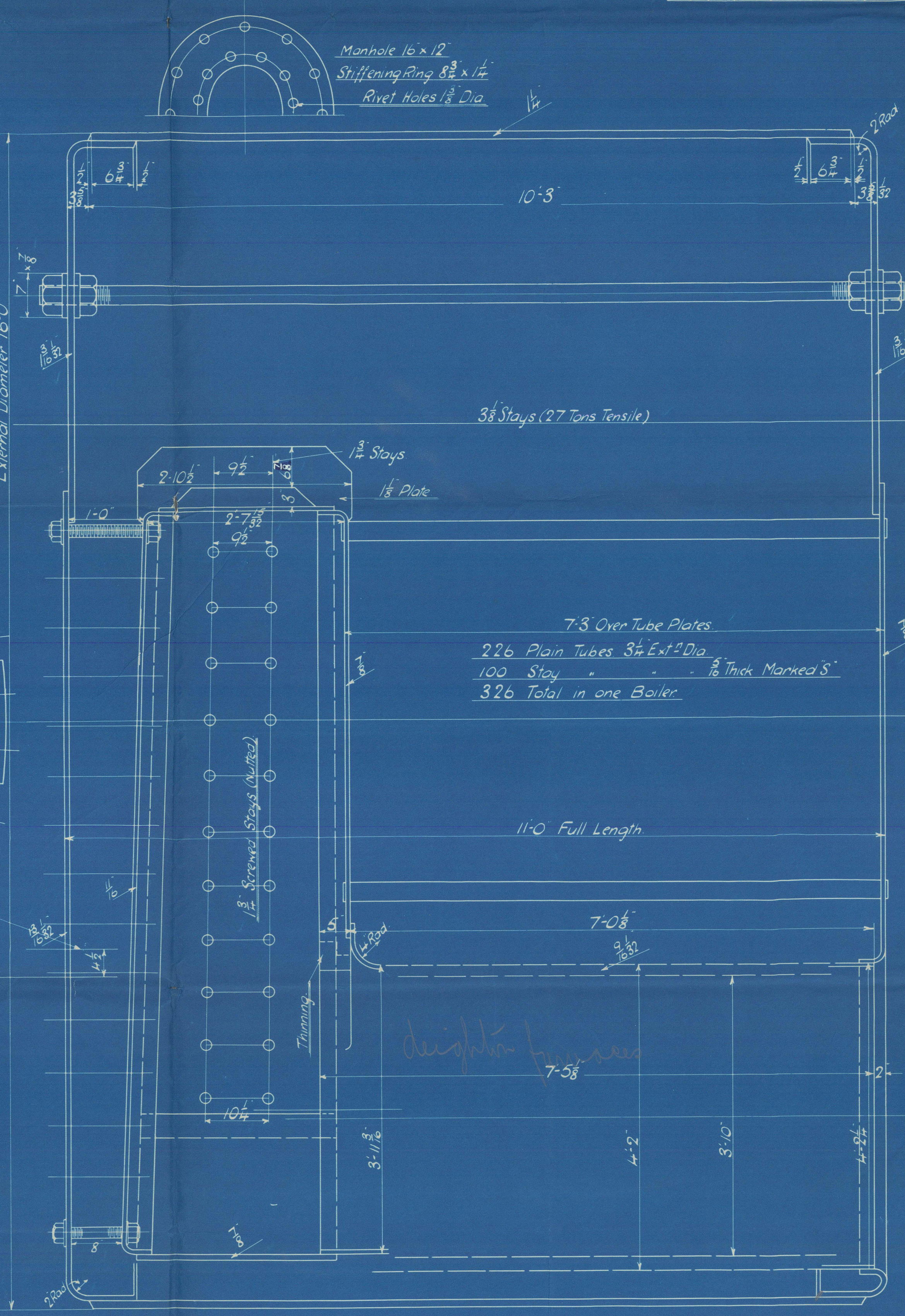
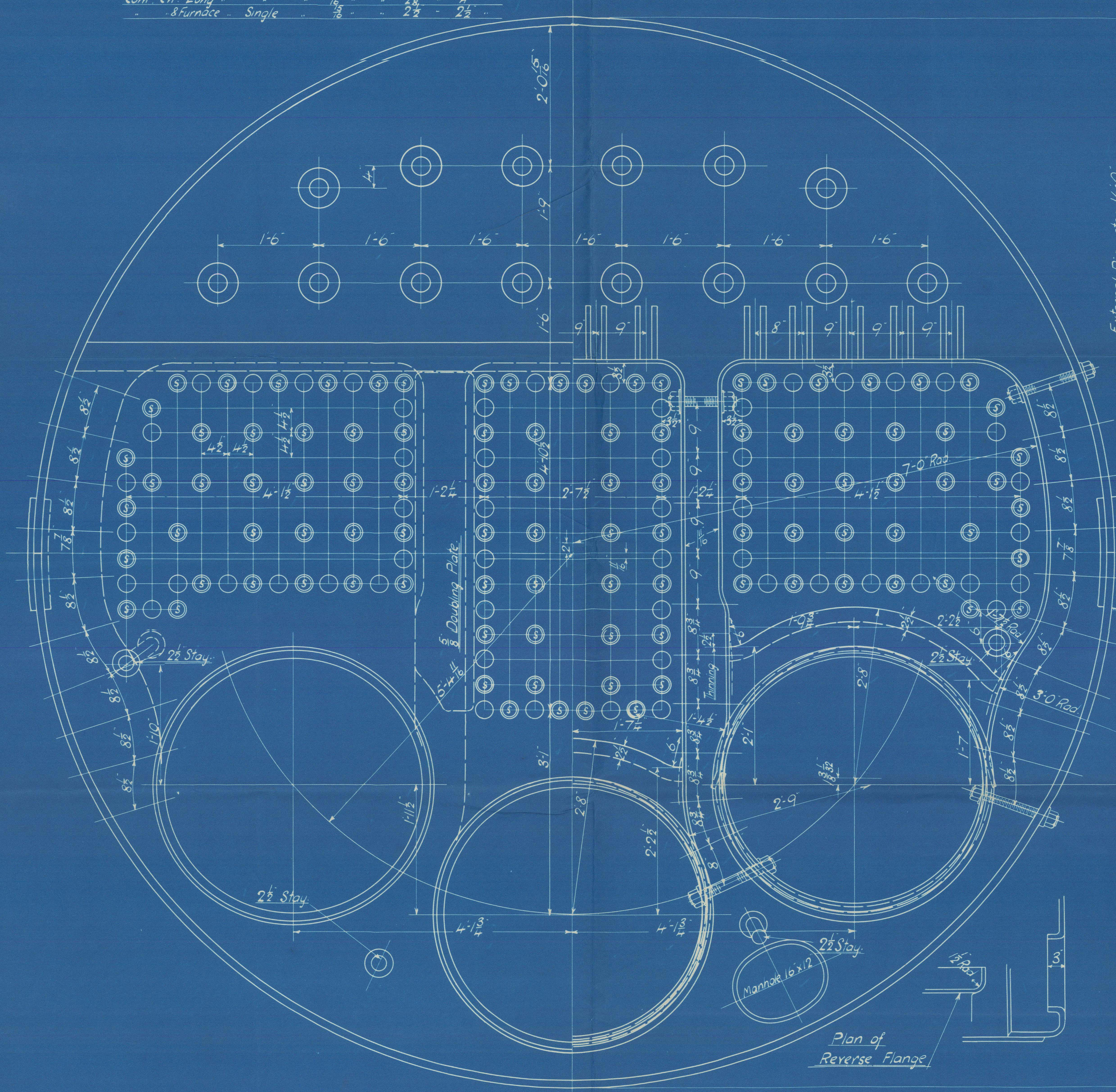
Combustion Chamber Girders 28 to 32 Tons.

RIVETING

Front & Back Seams Double Riveted 1/2 Rivet Holes 3/4 Pitch 5/8 Lap.

Com. Ch. Long 1/2 2 1/2 2 1/2

Straps - Single 1/2 2 1/2 2 1/2



06 p noon

J. DICKINSON & SONS.

C. No 455.

MAIN. BOILERS. 2 OFF.

S/S "Dingle Bank"

Sl. Rpt. 25658

No 3096
LLOYD'S TEST.
360 LBS.
13. 2. 13 JTF



RETAIN

J. BLUMER & Co 216.



© 2020

Lloyd's Register
Foundation

W11358-0008