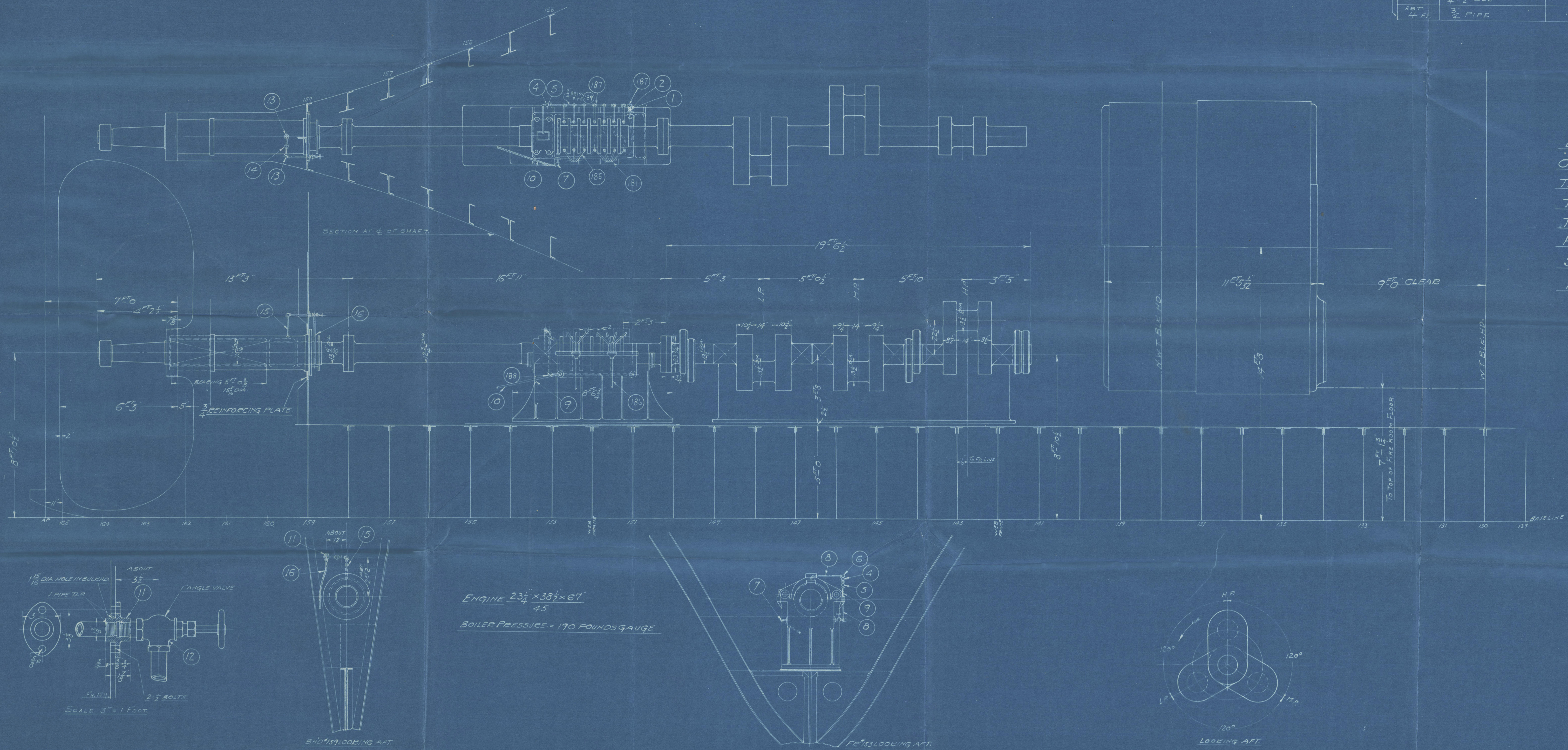
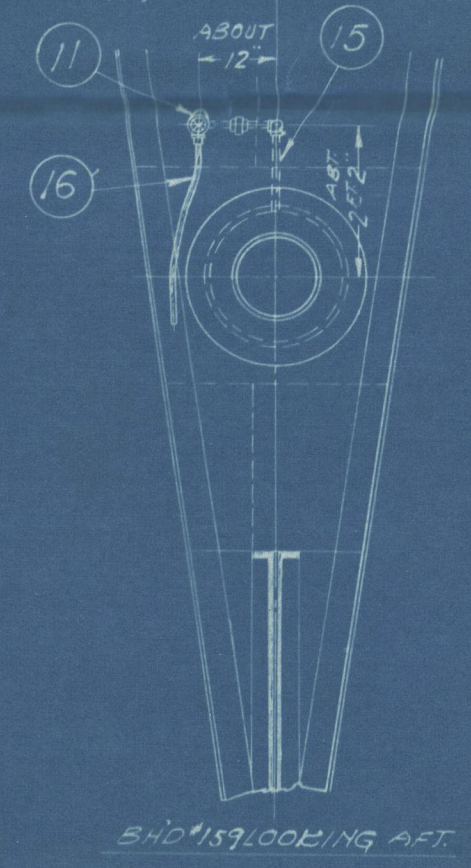
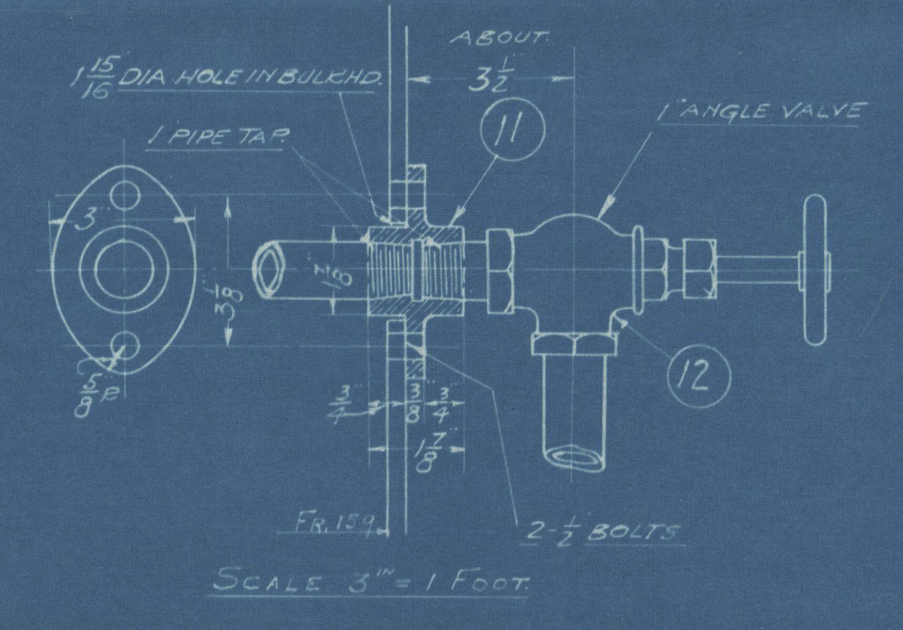


169-540-1

ALTERATIONS		DATE	APPROVED	QUANTITY FOR ONE COMPLETE SHIP					
NO. PCS.	NAME	MAT'L	PAT. NO.	REMARKS	DR. NO.	PC. NO.			
1	3/4" GLOBE VALVE	BRASS			169-540-1	1			
1	1/2" PIPE NIPPLE	"		LENGTH TO SUIT WORK	"	2			
1	1/2" ELL	BRASS			169-540-1	4			
1	1/2" GLOBE VALVE	"			"	5			
1	1/2" SWING JOINT	"		SIMILAR TO FIG. 238, PAGE 1308 75.000 & 75.000 500/19.2	"	6			
1	1/2" ELL	"			"	7			
1	1/2" PIPE (W/ PIPE SIZE)	BRASS		LENGTH TO SUIT WORK	"	8			
2	CLIP 4x12x8 AST	"		FACE " " "	"	9			
1	2 BOLT FLANGE	COMP'G	21-536-332	TAPPED FOR 1" PIPE	"	10			
1	1300 ANGLE VALVE	BRASS			"	11			
2	1" ELL	"			"	12			
1	1" UNION	COMP'		STD. SHORT MEN. ENOUGH	"	13			
1	1" PIPE (W/ PIPE SIZE)	BRASS		LENGTH TO SUIT WORK	"	14			
1	1" " " " "	"		" " " " "	"	15			
2	FUNNEL	C.I.	3-537-97		"	16			
7	COCK	COMP'G	3-537-82		"	17			
1	5" O.D. TUBING	COPPER		#18 B.W.G.	"	18			
1	1" PIPE	BRASS		IRON PIPE SIZE	"	19			
8	3/4" TEE	"		ROUGH	"	20			
1	3/4" ELL	"		"	"	21			
1	3/4" PIPE	"		IRON PIPE SIZE	"	22			

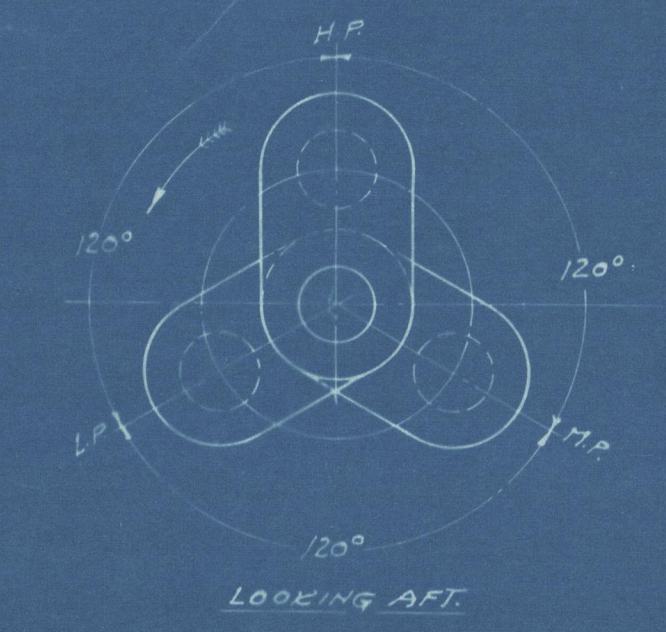
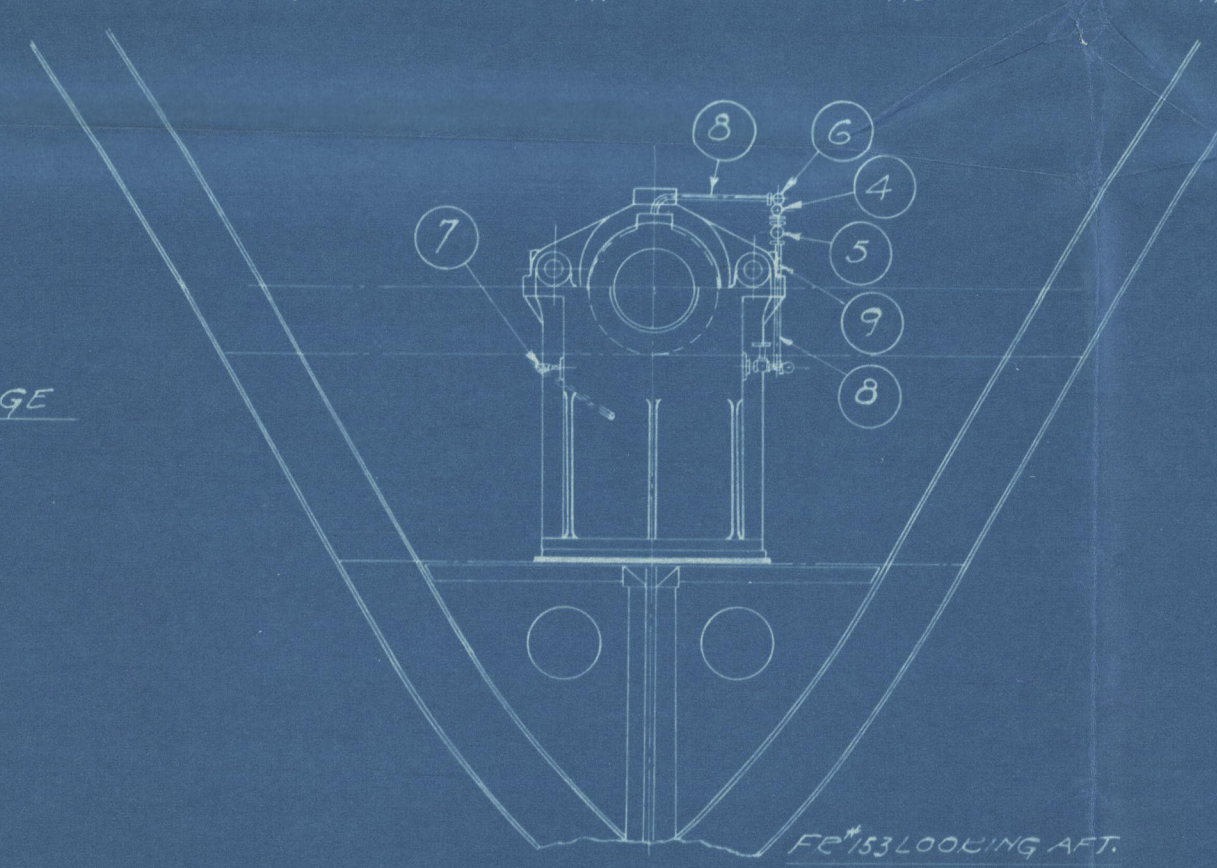


- LIST OF DETAIL DRAWINGS.
- CRANK SHAFT 93-524-1.
- THRUST " 93-541-1.
- TAIL " 93-541-1.
- THRUST BEARING 42-541-1.
- HOSE SHOE " 42-541-2.
- STERN TUBE 93-541-2.
- PROPELLER 93-546-1.



ENGINE 23 1/4 x 36 1/2 x 67 1/2

BOILER PRESSURE = 190 POUNDS GAUGE



ENGINE DEPARTMENT.

ARRANGEMENT OF SHAFTING

SCALE 3/4" = 1" FT. DRAWN BY 208 DATE 12-11-13

TRACED BY 208 CHECKED BY 207 CHIEF DRAFTSMAN 131

NEW YORK SHIPBUILDING COMPANY.

CAMDEN, NEW JERSEY, U.S.A.

DR. 169-540-1.

APPROVED [Signature] CHIEF ENGINEER



PHILADELPHIA.

New York D.B.S

No 169

SS Bristol n.n. William

Rpt-2389

H.  
Machen

Shastig

W137- 0129



© 2020

Lloyd's Register  
Foundation