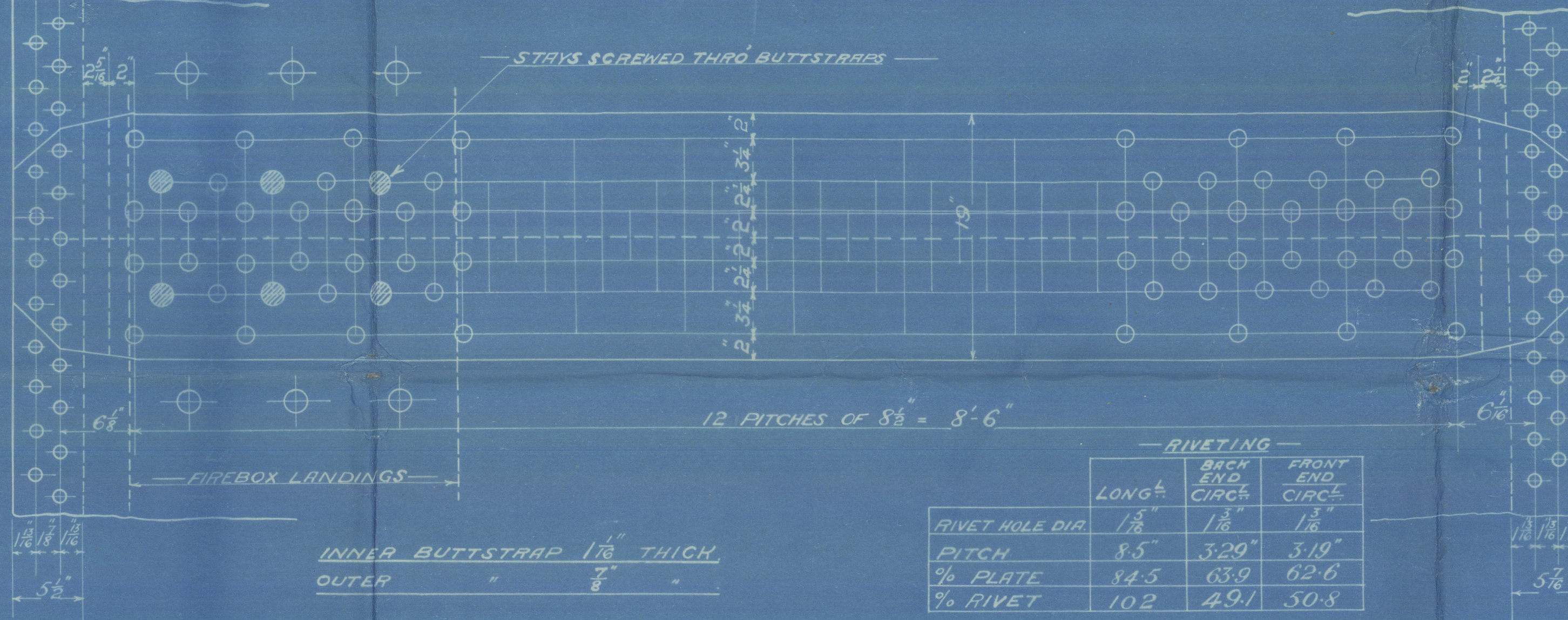


SURFACES	
TUBES	1000.0
FIREBOX TOP & SIDES	204.0
" BACK	91.0
" TUBE PLATE	59.0
FURNACES	170.0
<b>TOTAL HEATING SURFACE</b>	<b>2493.0</b>
GRATE AREA (BARS)	
TUBE AREA	15.54.0
WATER "	154.0
STEAM SPACE	475.0
GRATE AREA: HEATING SURFACE	
" " TUBE	
" " WATER	
" " STEAM SPACE	
% BOILER ABOVE FIREBOX	50.2
HEIGHT OF WATER	27.5 TONS

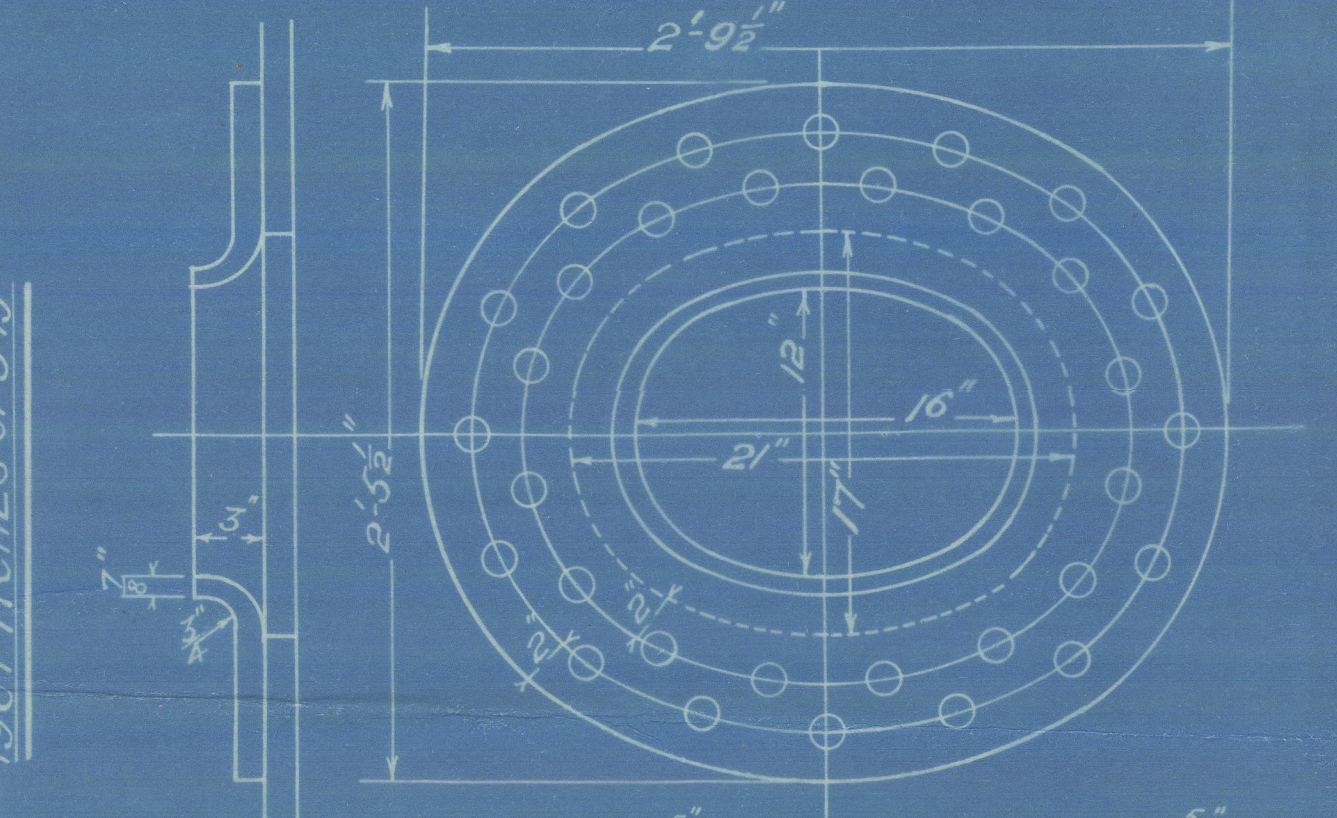
14/3/10

ALL PLATES & RIVETS OF SIEMENS-MARTIN STEEL.  
ALL RIVET HOLES DRILLED IN PLACE.  
MAIN STAYS SWELLED AT ENDS BY  
HYDRAULIC PRESSURE & ANNEALED.

BACK END CIRC.  
184 PITCHES OF 5.20"

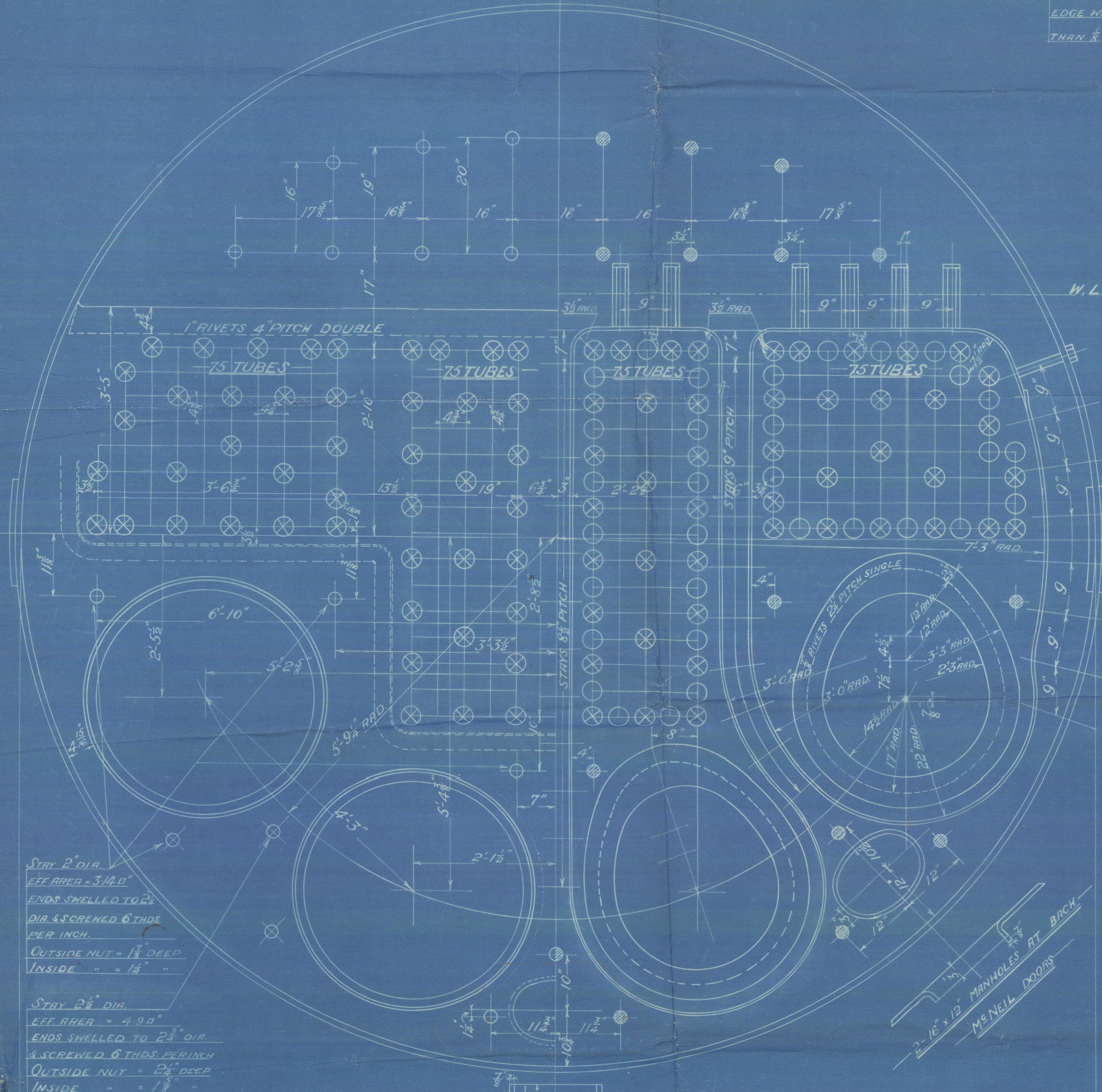


FRONT END CIRC.  
190 PITCHES OF 3.18"



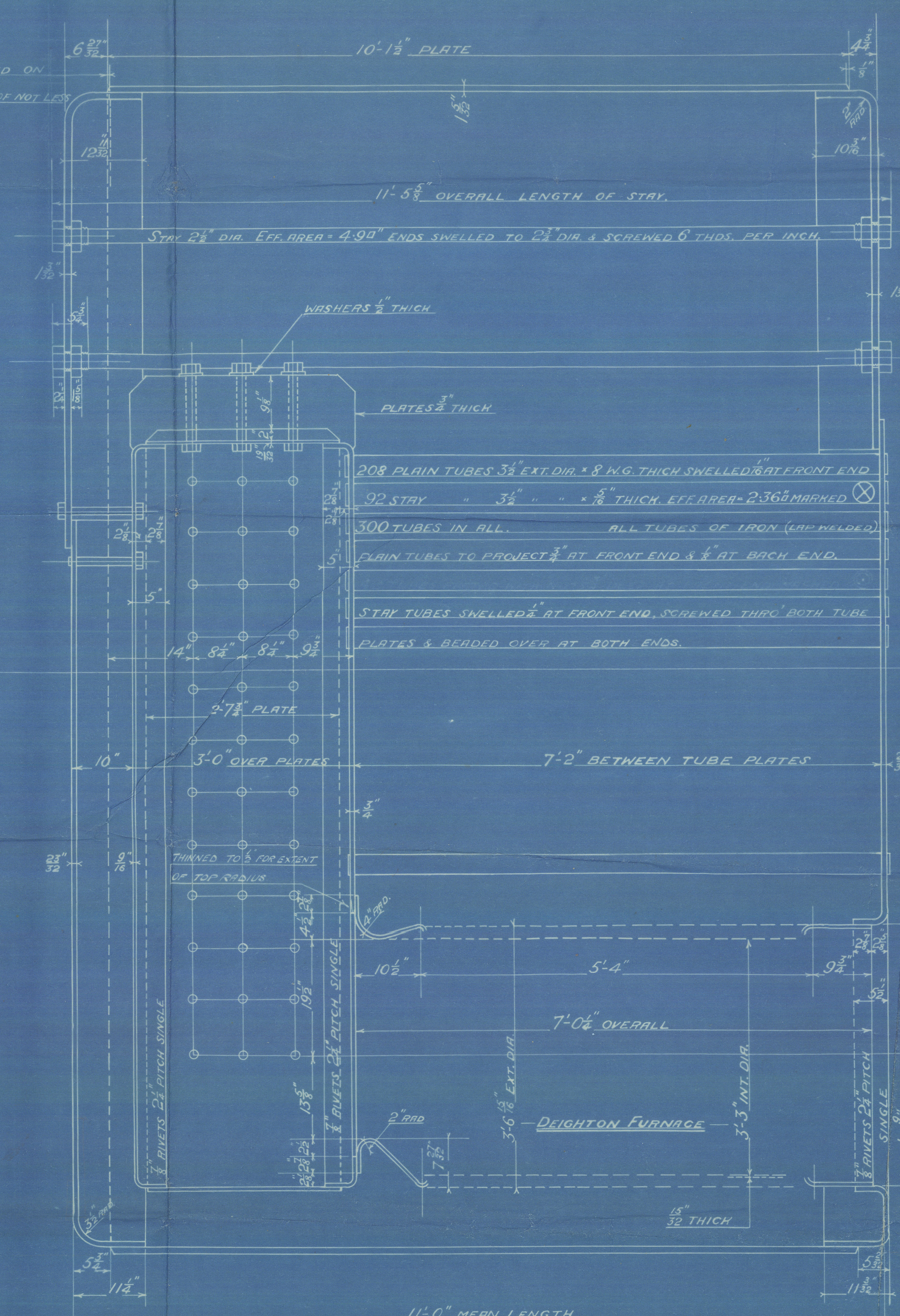
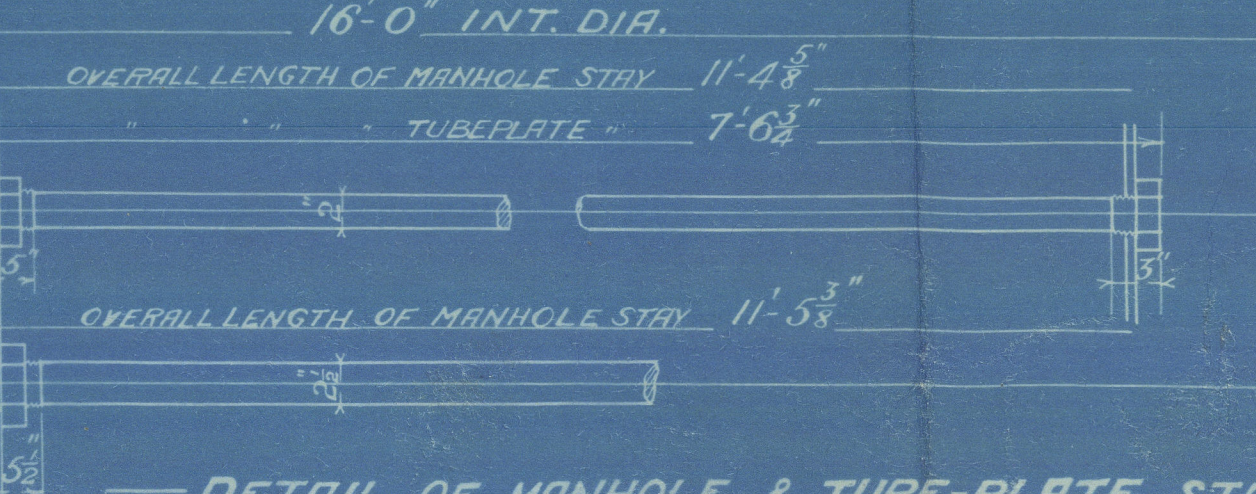
SHELL MANHOLE COMPENSATING RING  
M'NEIL DOOR  
DOOR TO HAVE EYEBOLT FITTED FOR LIFTING

LIMITS OF TENSILE STRENGTH	
SHELL, BUTTSTAYS & GIRDERS	28 1/2 TO 32 TONS
OTHER PLATES	26 " 30 "
FURNACES	26 " 30 "
MAIN STAYS	28 " 32 "
SCREWED STAYS	26 " 30 "
RIVET BARS	26 " 30 "



STAY 2" DIA.  
EFF. AREA = 3.140"  
ENDS SWELLED TO 2 1/2" DIA. & SCREWED 6 THDS. PER INCH.  
OUTSIDE NUT = 1 1/8" DEEP  
INSIDE " = 1 1/2"

STAY 2 1/2" DIA.  
EFF. AREA = 4.90"  
ENDS SWELLED TO 3 1/2" DIA. & SCREWED 6 THDS. PER INCH.  
OUTSIDE NUT = 2 1/8" DEEP  
INSIDE " = 1 1/8"



MAIN BOILER  
ONE OFF  
CON<sup>T</sup> N<sup>O</sup> 537  
WORKING PRESSURE = 160 LBS. PER SQ. INCH  
TO PASS LLOYD'S SURVEY  
SCALES, 1' & 1 1/2" = ONE FOOT.

FIREBOX STAYS		STEEL	
POSITION	DIA.	MARK	EFF. AREA
FIREBOX BACK TOP & SIDES	1 1/2"	○	1.480"
" INNER RING	1 1/2"	○	1.760"
" TOP "	1 1/2"	○	2.070"

ALL STAYS SCREWED THRO' BOTH PLATES AND NUT FITTED AT EACH END EXCEPT WHERE OTHERWISE STATED ON DRAWING.  
ALL 1 1/2", 1 3/4" NUTS 1" DEEP EXCEPT ON GIRDER TOPS WHERE THE OUTSIDE NUTS ARE 1 1/2" DEEP.

APR 14 3 10  
TIP N<sup>O</sup> 5414  
TRACED 7<sup>TH</sup> MARCH 1910



© 2021

From DAVID ROWAN & CO., GLASGOW.

ENCLOSURE

FOR

*Lloyds*

W139-0154

David Rowan & Co.

N<sup>o</sup> 534

Main Boiler

$\frac{1}{2}$  Barshaw

GLASGOW REPORT No: 29218.

n.n. Yewforest Feb 15 854.



Yewforest

W139-0154



© 2021

Lloyd's Register  
Foundation