

# CARGO BOAT

TO CLASS 100 A.I. SPAR DECK

## MIDSHIP SECTION

SCALE 1:25

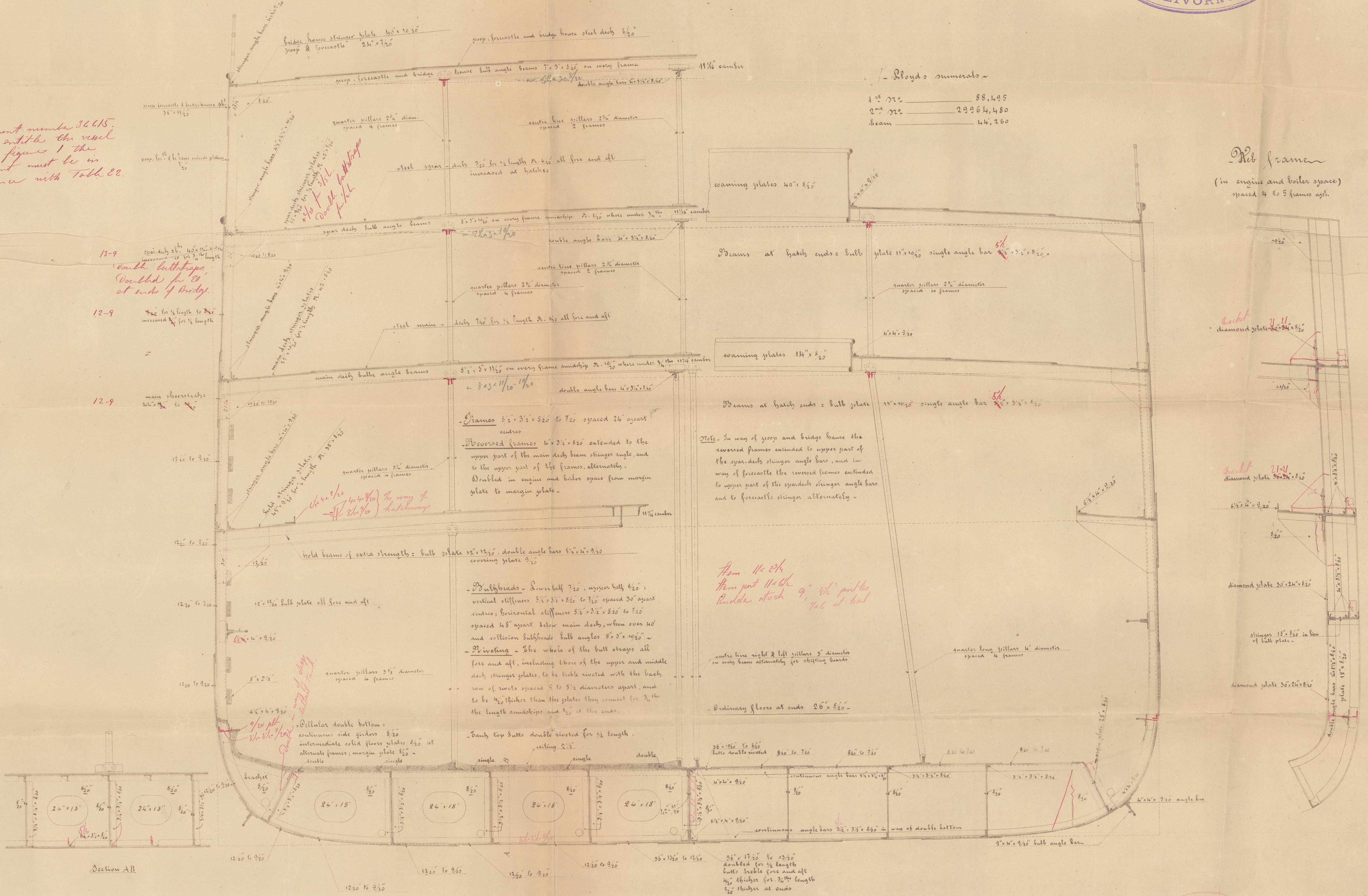


Equipment number 36415.  
and to enter the vessel  
to the figure 1 the  
equipment must be in  
accordance with Table 22.

Lloyd's numerals -

1 <sup>st</sup> 772	88,495
2 <sup>nd</sup> 772	29964,480
Beam	44,260

Net frame  
(in engine and boiler space)  
spaced 4 to 5 frames apart.



Signed J. H. C.  
10/7/88



LLOYD'S REGISTER OF SHIPPING  
RECEIVED  
18 JUL 1898  
LONDON

Ships

RETAIN

W1486-0039



© 2021

Lloyd's Register  
Foundation