

—MIDSHIP SECTION.—

SCALE $\frac{1}{2}$ " = 1 FOOT. CLASS 100A. LLOYDS.

13.2.14
16.3.14
12.10.14

PRINCIPAL DIMENSIONS.

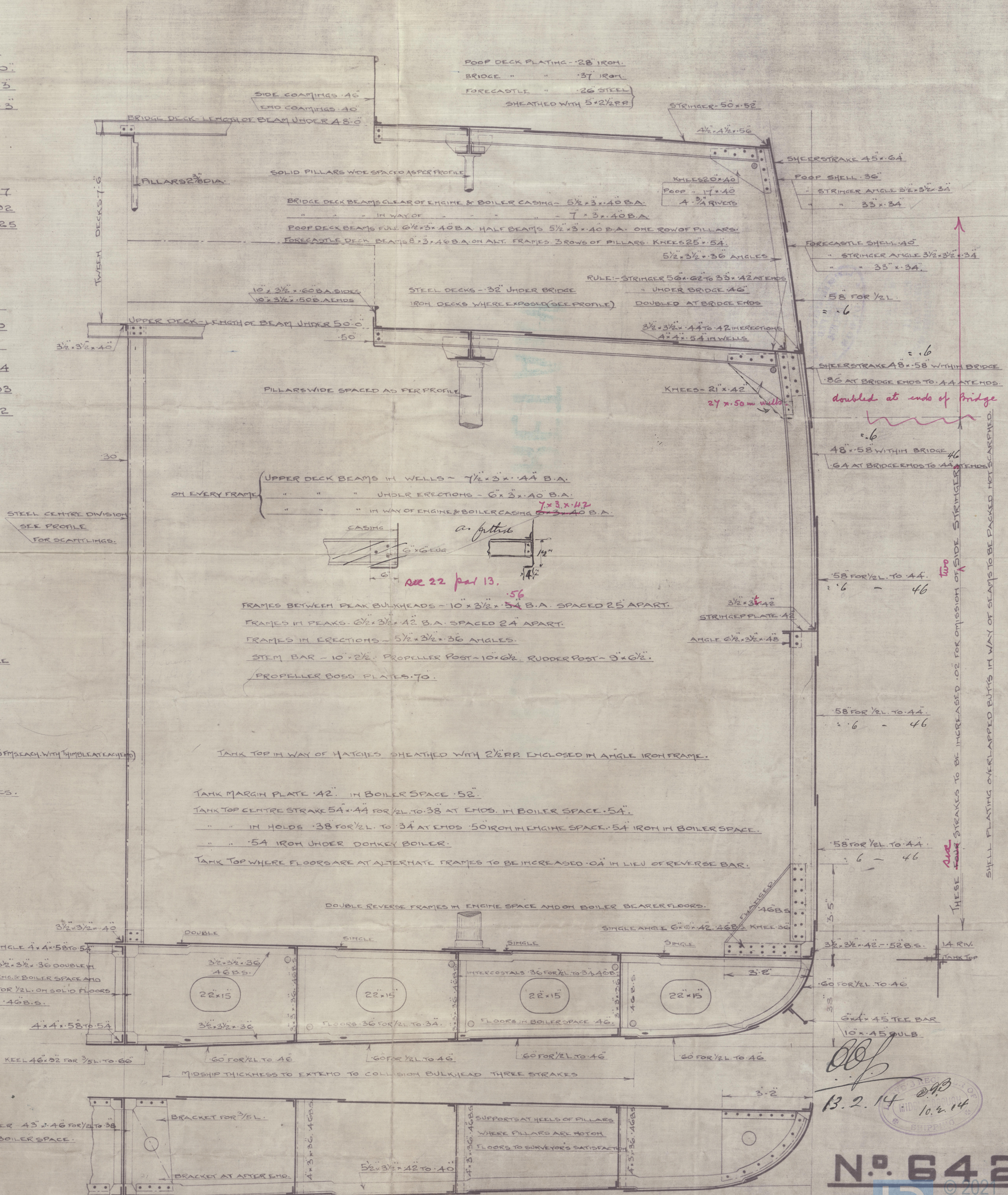
LENGTH B.P. 352.0"
BREADTH EXTREME 50.3
DEPTH MOULDED 25.3

RULE LENGTH 351.87
BREADTH 49.92
DEPTH 25.25

TRANSVERSE NO 75.17
LONGITUDINAL NO 26450
DEPTH 22.0
D/L BRIDGE DECK 10.74
D/L UPPER DECK 13.93
EQUIPMENT NO 28312

EQUIPMENT.

2 BOWERS 52½ CWT. STOCKLESS
1 " 44½ " " "
1 STREAM 14 " EX. STOCK.
1 KEDGE 6 " " " "
270 FATHOMS 2½" STUCCO CHAIN CABLE
90 " 4½" MOORING WIRE.
120 " 4½" TOWLINE STEEL
2 OF 90 " 2½" HAWSER.
2 OF 90 " 7" MANILLA WARP
2 OF 90 " 14" COIR ROPES (CUT INTO TWO 45 FT EACH WITH THIMBLE LEATHERS)
2 OF 90 " 5½" CHECK ROPES.
2 OF 90 " 5½" TRANSPORTING LINES.



RICHARDSON, DUCK & CO. LTD.
SHIPBUILDERS,
STOCKTON-ON-TEES.
TRACING NO 3660.
FEB 5th 1914.

Nº 642

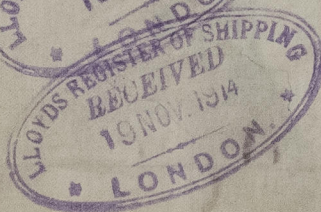
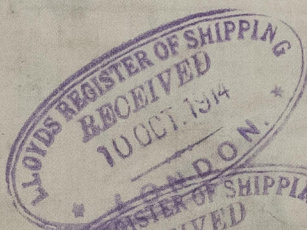
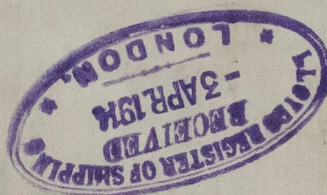
Messrs Richardson & Threlkeld

No 642

Mid. Sea:

S/S. Buresk

Mar. Ppt 8721



RETAIN



© 2021

Lloyd's Register
Foundation

W1535-0086