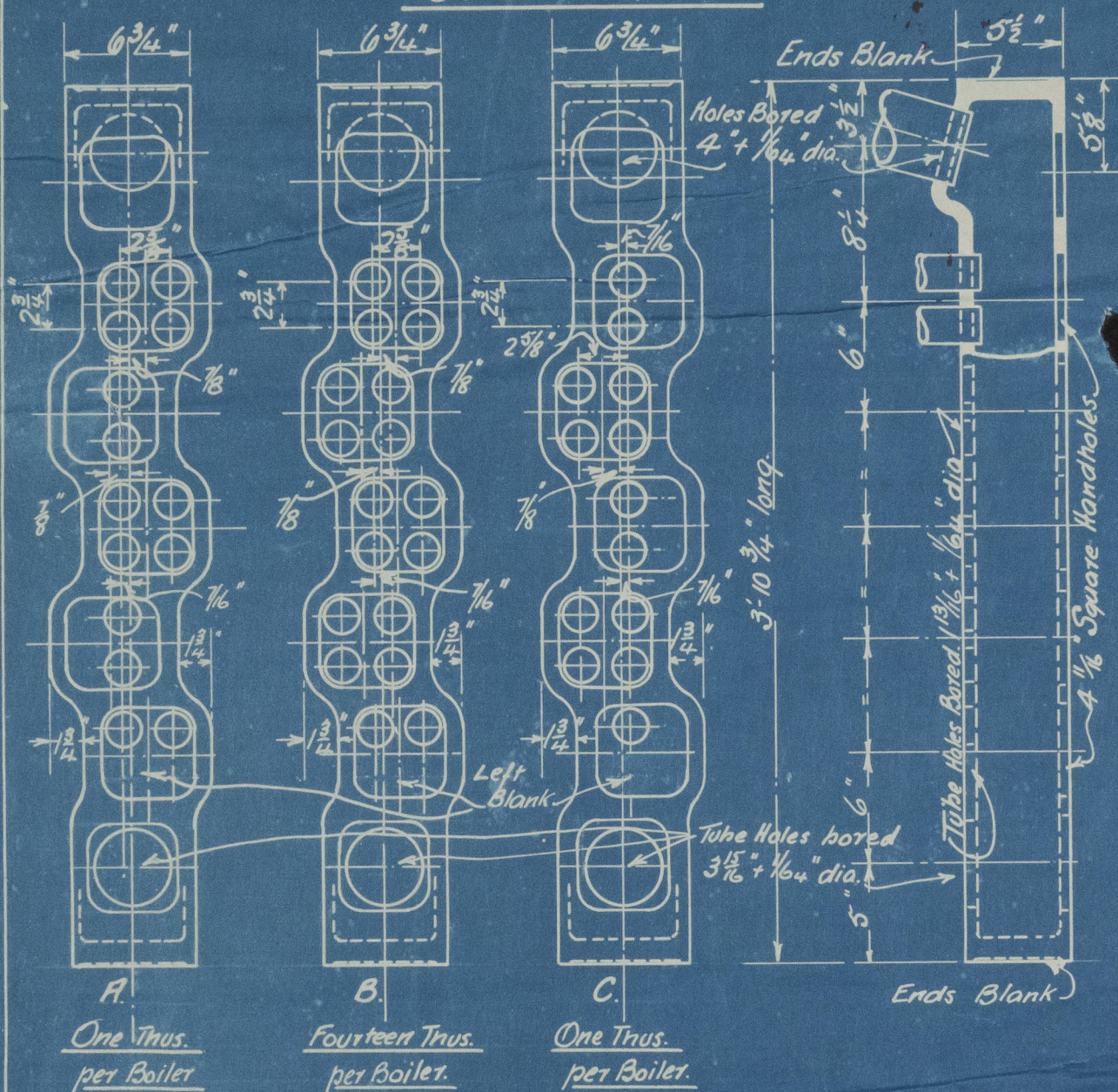


DETAIL OF UPTAKE HEADERS.

2 SETS THUS.

SCALE $\frac{1}{2}$ " = 1 FOOT.



Made from $\frac{17}{32}$ " Siemens Martin Mild Steel Plate Lapwelded.

A.		B.		C.	
14	Tube Holes $1\frac{13}{16} + \frac{1}{64}$ " dia.	18	Tube Holes $1\frac{13}{16} + \frac{1}{64}$ " dia.	13	Tube Holes $1\frac{13}{16} + \frac{1}{64}$ " dia.
1	" " $3\frac{15}{16} + \frac{1}{64}$ "	1	" " $3\frac{15}{16} + \frac{1}{64}$ "	1	" " $3\frac{15}{16} + \frac{1}{64}$ "
1	" " $4" + \frac{1}{64}$ "	1	" " $4" + \frac{1}{64}$ "	1	" " $4" + \frac{1}{64}$ "
7	$4\frac{1}{16}$ " Square Handholes.	7	$4\frac{1}{16}$ " Square Handholes.	7	$4\frac{1}{16}$ " Square Handholes.

To Lloyds Survey.

Working Pressure = 175 lbs. per. \square "

Test " = 350 " "

Tensile Strength of Plates. = 24 to 28 Tons. per Sq. Inch.

Job No. M. 159.

Six. N° 82/12.

Date. 31-3-10.



© 2021

Lloyd's Register
Foundation