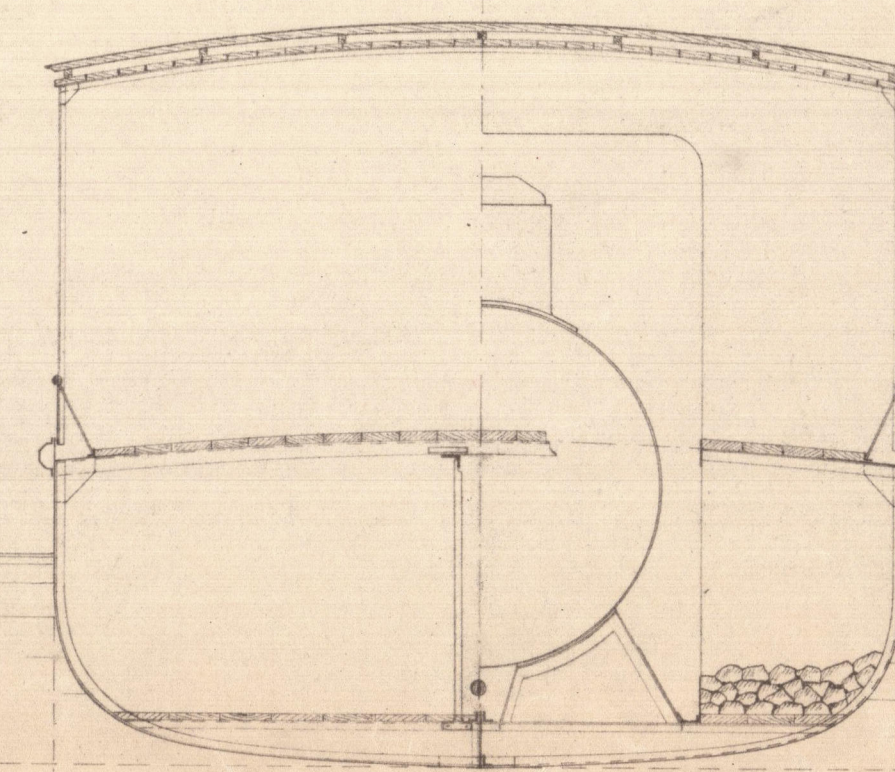
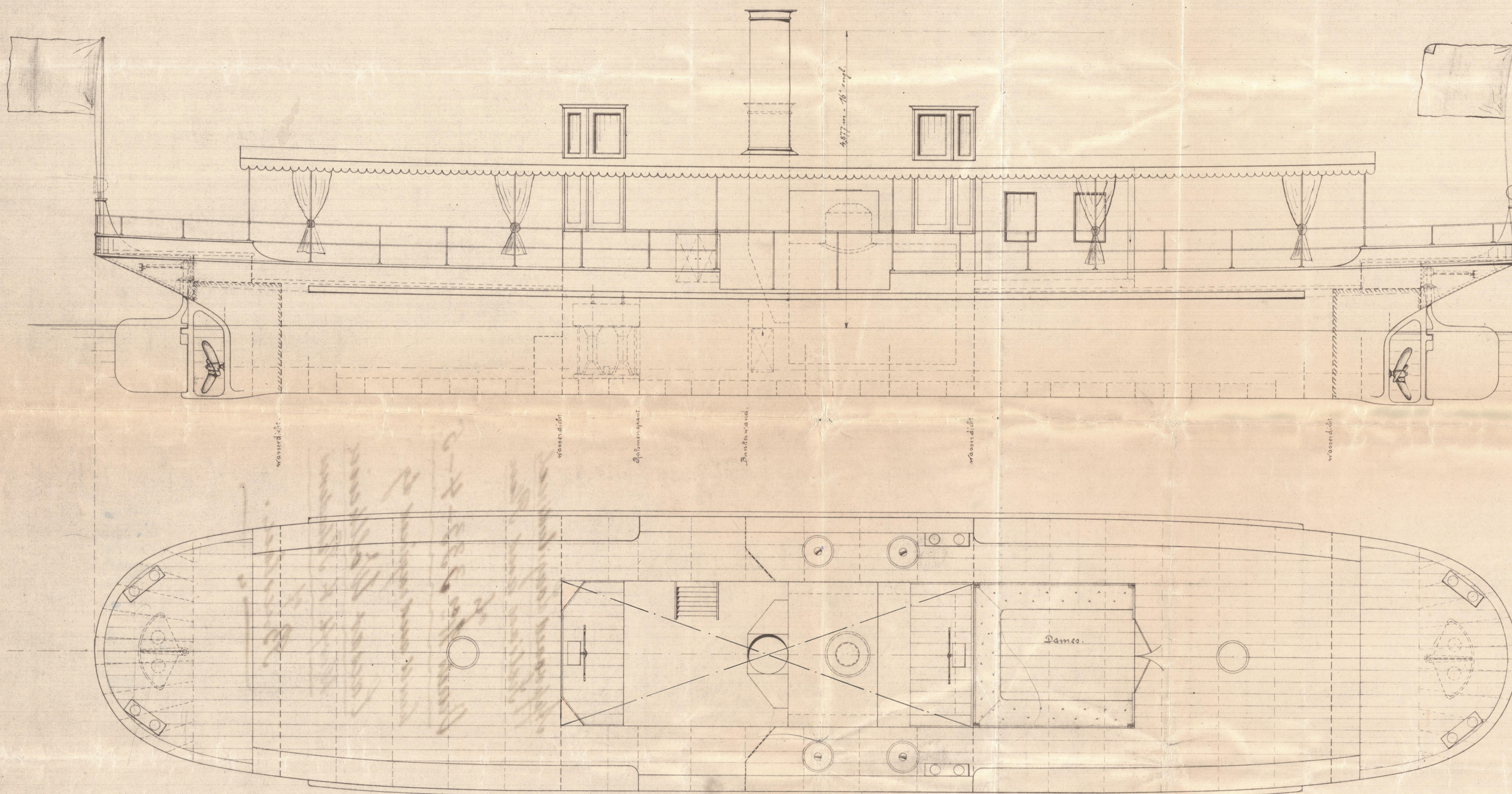




20.8.10

Bateau - mouche.

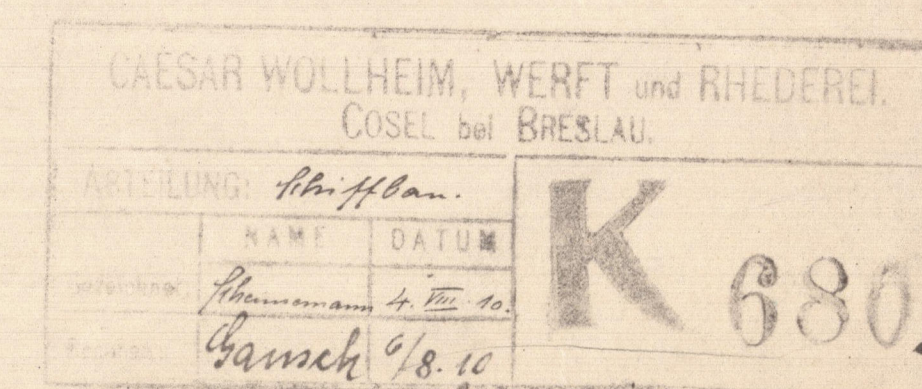
— 1:40. —



Dimensions.

Longueur entre P.P. 20,00 m.
Longueur au maître-couple 14,50
Breadth 1,60

C.B.
20.8.10.



Hann. Rept. No. 11/88-89-90

"No 11"
"No 12"
"No 13"

} of Louisiana etc

Hamburg 12. 10. Kuenen

Approved Longitudinal
Section and Plan

of
Vessels Nos 333-4-5

built and engineered by

Cesar Wollheim,

Werft. & Scherers,

of
Breslau.

RETAIN



© 2021

Lloyd's Register
Foundation