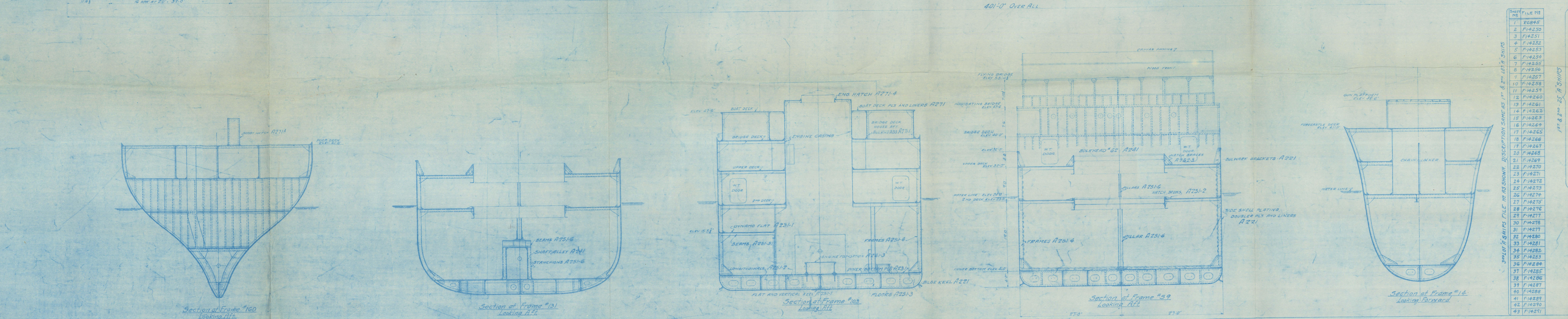


NOTE: CHARGE NUMBERS FOR 3RD LOT OF 'A' SHIPS ARE SAME AS FOR 1ST AND 2ND EXCEPT THAT CHARGE LETTER 'R' IS SUBSTITUTED FOR 'A' FOR PIECES NOT INTERCHANGEABLE WITH 1ST AND 2ND LOT.

LIST OF CHARGE NUMBERS	
CHARGE NO.	DESCRIPTION
A 200	ERECTOR DRAWINGS
A 201	RUDDER
A 202	SHELL PLATING, LARGE KEEL, BULKHEAD BRACKETS, MARGIN IS, DOUBLES, LINERS
A 203	DOUBLE PLATES FOR DOCKING PLUGS
A 204	BULKHEAD BRACKETS
A 205	INNER BOTTOM PLATES, BOUNDARY IS, LINERS, MANHOLE COVERS, KINGS AND GASKETS
A 206	INNER BOTTOM LINERS
A 207	DYNAMO AND W.T. PLAT PLATES, LINERS AND BOUNDARY IS
A 208	END DECK PLATES, MARGIN IS, BRACKETS, DOUBLES
A 209	ACCESS-HOLE COVERS, INTERCOSTAL IS AND LINERS
A 210	UPPER DECK PLATES, MARGIN IS, DOUBLES, LINERS AND INTERCOSTAL IS
A 211	FORECASTLE, BRIDGE, POOP DECK PLATES, MARGIN IS
A 212	DOUBLES, LINERS, CURBS FOR HATCHES AND BUTT-STRAIPS, BULKHEADS 62, 71, 87, 98, 104, 116, 133, 160, 161, 171, 40, 137, 170, 187, 31, 108, 110, 111, 112, 113, 114, 115, 116, 117, 118, 119, 120, 121, 122, 123, 124, 125, 126, 127, 128, 129, 130, 131, 132, 133, 134, 135, 136, 137, 138, 139, 140, 141, 142, 143, 144, 145, 146, 147, 148, 149, 150, 151, 152, 153, 154, 155, 156, 157, 158, 159, 160, 161, 162, 163, 164, 165, 166, 167, 168, 169, 170, 171, 172, 173, 174, 175, 176, 177, 178, 179, 180, 181, 182, 183, 184, 185, 186, 187, 188, 189, 190, 191, 192, 193, 194, 195, 196, 197, 198, 199, 200
A 213	STIFFS, MARGIN IS, LINERS, 30 IN BOOM DOWN TO BHD 90, 107
A 214	ENGINE AND BOILER CASING
A 215	ENGINE AND BOILER CASING BHDS 87, 95, 96, 97, 98, 99, 101, 109, 115, COAL CHUTE
A 216	SHAFT GUARDS IN SHAFT ALLEY
A 217	BHD IN FORD MAGAZINE
A 218	FLAT AND VERTICAL KEEL LINERS
A 219	LONGITUDINALS
A 220	2 DOORS
A 221	FRAMES AND COMPENSATING BRACKETS, CANT FRAMES
A 222	PILLARS, STANCHIONS IN SHAFT ALLEY
A 223	STRINGERS, COMPENSATING BRKTS, SWASH PLATES
A 224	DYNAMO AND W.T. FLAT BEAMS
A 225	2ND DECK BEAMS
A 226	UPPER DECK BEAMS AND BRACKETS
A 227	FORECASTLE, BRIDGE, POOP DECK BEAMS
A 228	2ND DECK RUNNERS AND BRACKETS
A 229	UPPER DECK RUNNERS AND BRACKETS
A 230	BRIDGE DECK RUNNERS AND BRACKETS
A 231	SHAFT STOODS, ROILER FOUNDATIONS
A 232	ENGINE AND THRUST FOUNDATIONS
A 233	MAIN CONDENSER FOUNDATIONS
A 234	FORD GUN SUPPORT
A 235	AFTER GUN SUPPORTS
A 236	FOUNDATIONS FOR BALLAST WHEELS
A 237	PUMPS, LUBRICATING OIL COOLER
A 238	CLIPS FOR JOINER WORK
A 239	END DECK HATCH COVERS, 10 IN, 12 IN, 14 IN, 16 IN, 18 IN, 20 IN, 22 IN, 24 IN, 26 IN, 28 IN, 30 IN, 32 IN, 34 IN, 36 IN, 38 IN, 40 IN, 42 IN, 44 IN, 46 IN, 48 IN, 50 IN, 52 IN, 54 IN, 56 IN, 58 IN, 60 IN, 62 IN, 64 IN, 66 IN, 68 IN, 70 IN, 72 IN, 74 IN, 76 IN, 78 IN, 80 IN, 82 IN, 84 IN, 86 IN, 88 IN, 90 IN, 92 IN, 94 IN, 96 IN, 98 IN, 100 IN
A 240	UPPER DECK HATCH COVERS, 10 IN, 12 IN, 14 IN, 16 IN, 18 IN, 20 IN, 22 IN, 24 IN, 26 IN, 28 IN, 30 IN, 32 IN, 34 IN, 36 IN, 38 IN, 40 IN, 42 IN, 44 IN, 46 IN, 48 IN, 50 IN, 52 IN, 54 IN, 56 IN, 58 IN, 60 IN, 62 IN, 64 IN, 66 IN, 68 IN, 70 IN, 72 IN, 74 IN, 76 IN, 78 IN, 80 IN, 82 IN, 84 IN, 86 IN, 88 IN, 90 IN, 92 IN, 94 IN, 96 IN, 98 IN, 100 IN
A 241	ADJUTANT DECK HATCH COVERS, 10 IN, 12 IN, 14 IN, 16 IN, 18 IN, 20 IN, 22 IN, 24 IN, 26 IN, 28 IN, 30 IN, 32 IN, 34 IN, 36 IN, 38 IN, 40 IN, 42 IN, 44 IN, 46 IN, 48 IN, 50 IN, 52 IN, 54 IN, 56 IN, 58 IN, 60 IN, 62 IN, 64 IN, 66 IN, 68 IN, 70 IN, 72 IN, 74 IN, 76 IN, 78 IN, 80 IN, 82 IN, 84 IN, 86 IN, 88 IN, 90 IN, 92 IN, 94 IN, 96 IN, 98 IN, 100 IN
A 242	INTERIOR BHD BRIDGE DECK HOUSE FORD
A 243	NAVIGATING BRIDGE, FIDLEY TOP, ENR HATCH
A 244	BOOSY HATCH
A 245	UPPER DECK BOAT STORAGE
A 246	SKYLIGHT DECK TILLET ON BOAT DECK
A 247	STERN EXTENSION
A 248	ROOM RESTO
A 249	GALLEY COAL BOX
A 250	SANITARY BHDS MIDSHIP
A 251	SANITARY BHDS AFT
A 252	MAST AND BOOM TABLES

LIST OF ERECTION DRAWINGS	
FILE NO.	DESCRIPTION
1	LONGITUDINAL AND TRANSVERSE SECTIONS
2	PLAN OF BOTTOM SHELL FORD FR 52
3	PLAN OF BOTTOM SHELL FR 52 TO 115
4	PLAN OF BOTTOM SHELL AFT FR 115
5	PLAN OF UPPER DECK FORD FR 52
6	PLAN OF UPPER DECK AFT FR 115
7	PLAN OF UPPER DECK FORD FR 52 TO 115
8	PLAN OF UPPER DECK AFT FR 115
9	PLAN OF 2ND DECK FORD FR 52
10	PLAN OF 2ND DECK AFT FR 115
11	PLAN OF 2ND DECK FORD FR 52 TO 115
12	PLAN OF 2ND DECK AFT FR 115
13	PLAN OF UPPER DECK FORD FR 52 TO 115
14	PLAN OF UPPER DECK AFT FR 115
15	STARBOARD SIDE SHELL FORD FR 52
16	STARBOARD SIDE SHELL FR 52 TO 115
17	STARBOARD SIDE SHELL AFT FR 115
18	PORT SIDESHELL FORD FR 52
19	PORT SIDESHELL FR 52 TO 115
20	PORT SIDESHELL AFT FR 115
21	BHDS 71, 71-87, FUEL OIL SI-87
22	BHDS 87, 98, 104
23	BHDS 12, 40, 137, DYNAMO PLAT



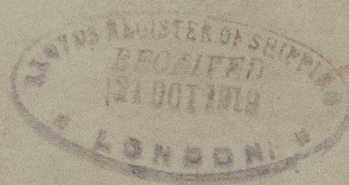
"A" SHIP	
LONGITUDINAL AND TRANSVERSE SECTIONS	
HULL STRUCTURAL COPY 7500 TON D. W. CARGO SHIP UNITED STATES SHIPPING BOARD EMERGENCY FLEET CORPORATION AMERICAN INTERNATIONAL SHIPBUILDING CORPORATION AND PHILADELPHIA OFFICE	
1. HULL Plan up to date	2. HULL Plan up to date
3. HULL Plan up to date	4. HULL Plan up to date
5. HULL Plan up to date	6. HULL Plan up to date
7. HULL Plan up to date	8. HULL Plan up to date
9. HULL Plan up to date	10. HULL Plan up to date
11. HULL Plan up to date	12. HULL Plan up to date
13. HULL Plan up to date	14. HULL Plan up to date
15. HULL Plan up to date	16. HULL Plan up to date
17. HULL Plan up to date	18. HULL Plan up to date
19. HULL Plan up to date	20. HULL Plan up to date
21. HULL Plan up to date	22. HULL Plan up to date
23. HULL Plan up to date	24. HULL Plan up to date
25. HULL Plan up to date	26. HULL Plan up to date
27. HULL Plan up to date	28. HULL Plan up to date
29. HULL Plan up to date	30. HULL Plan up to date
31. HULL Plan up to date	32. HULL Plan up to date
33. HULL Plan up to date	34. HULL Plan up to date
35. HULL Plan up to date	36. HULL Plan up to date
37. HULL Plan up to date	38. HULL Plan up to date
39. HULL Plan up to date	40. HULL Plan up to date
41. HULL Plan up to date	42. HULL Plan up to date
43. HULL Plan up to date	44. HULL Plan up to date
45. HULL Plan up to date	46. HULL Plan up to date
47. HULL Plan up to date	48. HULL Plan up to date
49. HULL Plan up to date	50. HULL Plan up to date
51. HULL Plan up to date	52. HULL Plan up to date
53. HULL Plan up to date	54. HULL Plan up to date
55. HULL Plan up to date	56. HULL Plan up to date
57. HULL Plan up to date	58. HULL Plan up to date
59. HULL Plan up to date	60. HULL Plan up to date
61. HULL Plan up to date	62. HULL Plan up to date
63. HULL Plan up to date	64. HULL Plan up to date
65. HULL Plan up to date	66. HULL Plan up to date
67. HULL Plan up to date	68. HULL Plan up to date
69. HULL Plan up to date	70. HULL Plan up to date
71. HULL Plan up to date	72. HULL Plan up to date
73. HULL Plan up to date	74. HULL Plan up to date
75. HULL Plan up to date	76. HULL Plan up to date
77. HULL Plan up to date	78. HULL Plan up to date
79. HULL Plan up to date	80. HULL Plan up to date
81. HULL Plan up to date	82. HULL Plan up to date
83. HULL Plan up to date	84. HULL Plan up to date
85. HULL Plan up to date	86. HULL Plan up to date
87. HULL Plan up to date	88. HULL Plan up to date
89. HULL Plan up to date	90. HULL Plan up to date
91. HULL Plan up to date	92. HULL Plan up to date
93. HULL Plan up to date	94. HULL Plan up to date
95. HULL Plan up to date	96. HULL Plan up to date
97. HULL Plan up to date	98. HULL Plan up to date
99. HULL Plan up to date	100. HULL Plan up to date

1 JUL 23 1919
SHIPBUILDING CORP
DEPARTING ROOM
HOG ISLAND PA

RETAIN

Profile
S.S. Labette Hull N^o 541
A.I.S.C. Hog Island Pa

Rll 3478



Stamford

W474-0074



© 2021

Lloyds Register
Foundation