

STEEL BOILERS

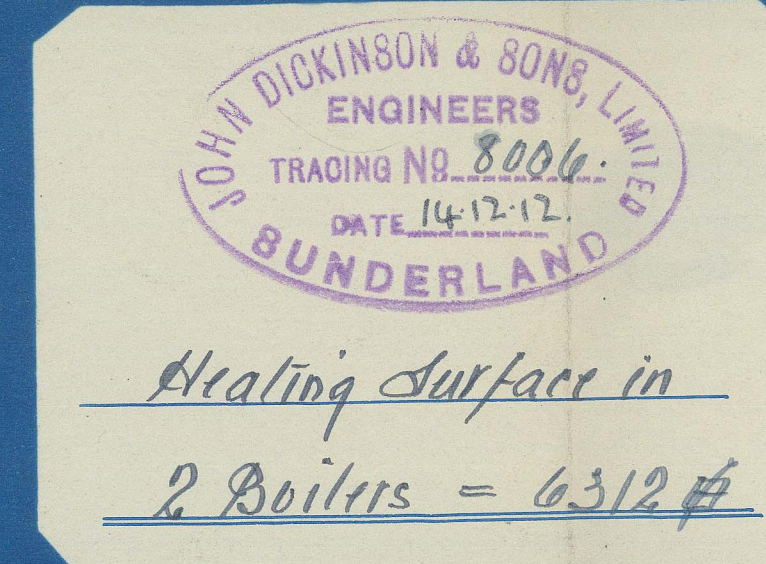
To Lloyds requirements for a working pressure of 180 lbs. per square inch.

All plates rivets stays & girders of steel

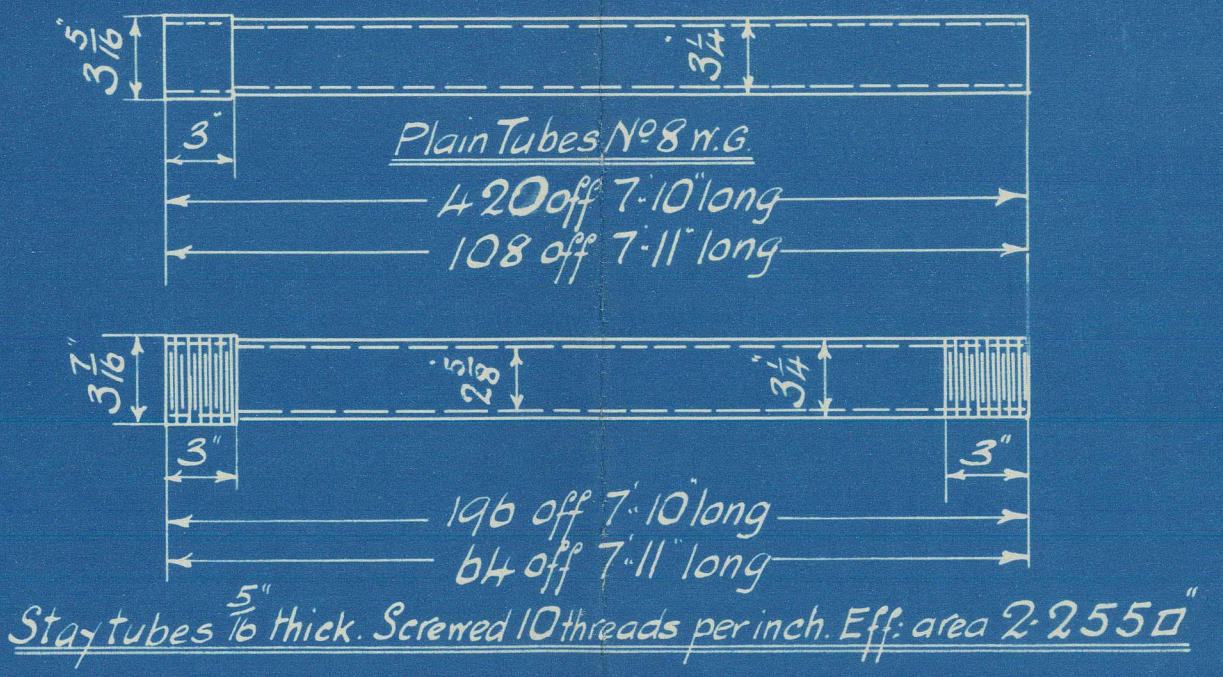
SCALE - ONE INCH = ONE FOOT.

Tubes of Wrought Iron.

12m. 8



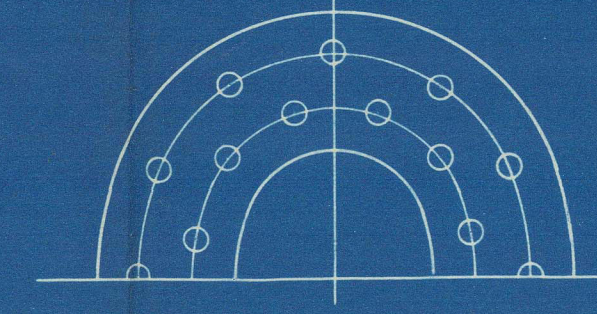
20/12/12



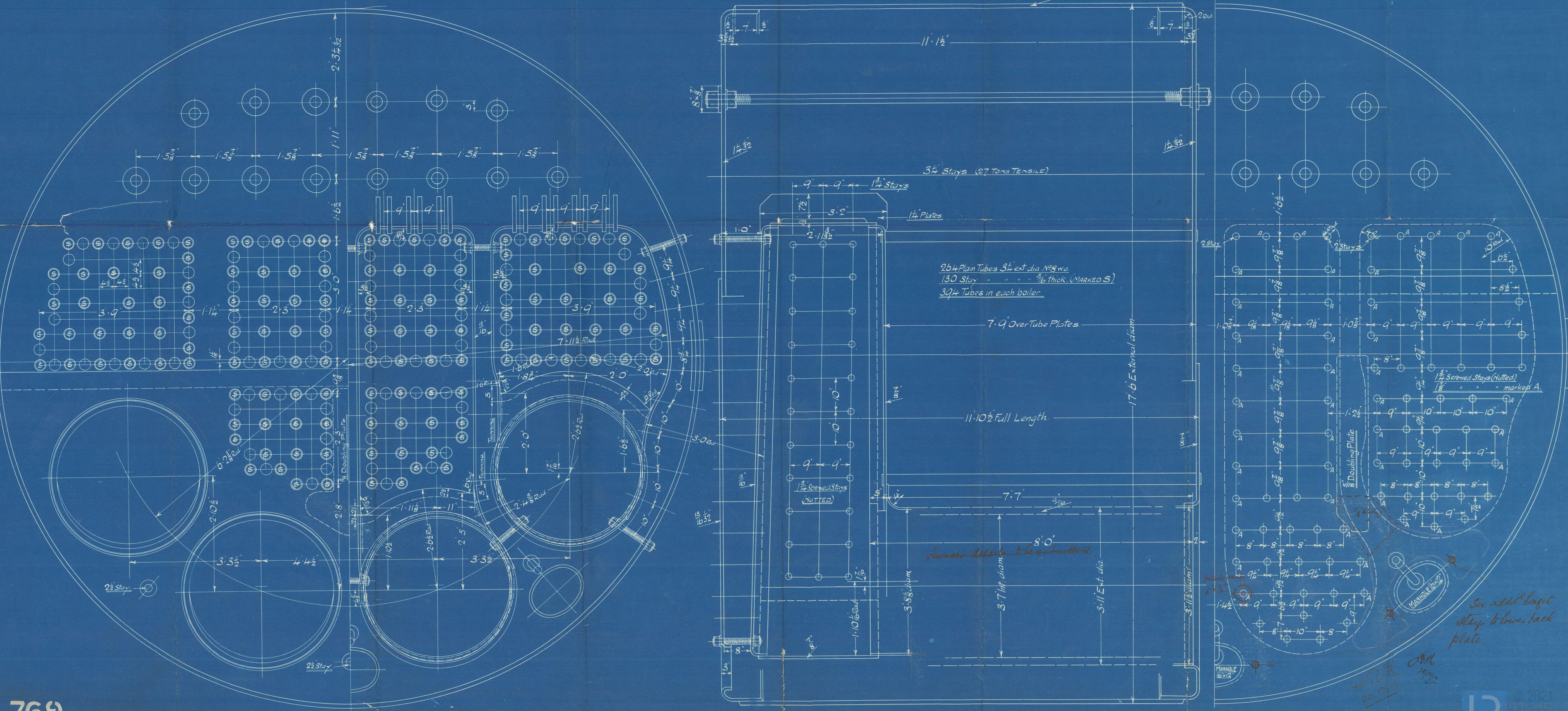
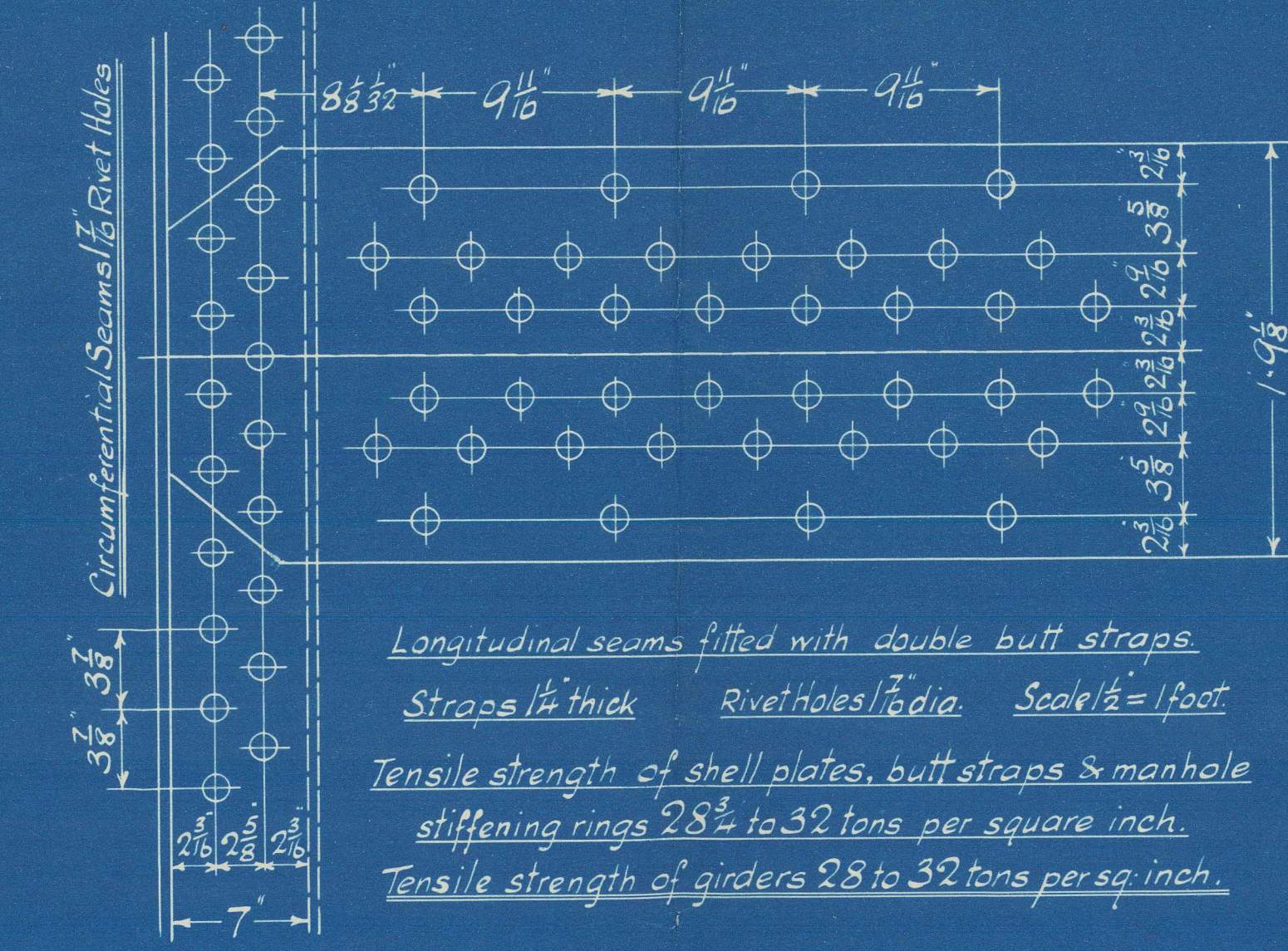
STAYS					
Diam	Pressure	Eff. Dia	Eff. Area	Eff. Length	Eff. Area
1 1/2"	9	1.6078	2.031	323	
1 3/8"	9	1.7327	2.355	32	
2"	9	1.8577	2.679	0	
2 1/2"	0	2.2808	4.13	3	
3 1/4"	0	3.036	7.22	14	

ENG	DATE	FURNACES
769	2 OFF	Intended for Messrs W. J. Pickersgill & Co. Ltd. 180 December 12/12. Ashlin 1897 Type.

RIVETING
Front & back seams double riveted 1 3/8" rivet holes 5 1/2" pitch 5 3/8" lap
Com. Chr. longitudinal " " " 1 3/8" " 2 5/8" " 4"
Com. Chr. & Furnace seams single riveted 1 3/8" " 2 5/8" " 2 5/8"



MANHOLE 16" x 12"
Stiffening Ring 8 7/8" x 1 5/8"
Rivet Holes 1 1/8" dia.



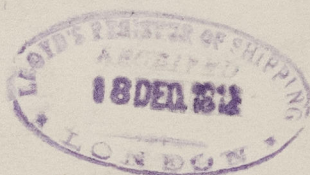
J. Dickinson & Sons Ltd

No. 769 Boilers

for 180 lbs

W. Pickersgill & Sons

8/8 No. 180



S.S. Helmslock

Sld Rkt No. 25859

Calanda



Lloyd's Register
Foundation

W1629-0025